

F.A.P. RTE.	SECTION	COUNTY	TOTAL SHEETS	SHEET NO.
3734	09-00058-00-RS	COOK	12	1
ILLINOIS CONTRACT No. 63284				

Long Section Number  
Multiple County Names

### INDEX OF SHEETS

- 1 TITLE SHEET
- 2 GENERAL NOTES
- 3 SUMMARY OF QUANTITIES
- 4 TYPICAL SECTIONS & HOT-MIX ASPHALT MIXTURE REQUIREMENTS
- 5 CONSTRUCTION PLAN STA. 0+22.4± TO 11+26.0±
- 6 CONSTRUCTION PLAN STA. 11+26.0± TO 20+65.7±
- 7 TRAFFIC CONTROL & PAVEMENT MARKINGS STA. 0+22.4± TO 11+26.0±
- 8 TRAFFIC CONTROL & PAVEMENT MARKINGS STA. 11+26.0± TO 20+65.7±
- 9 THRU 12 MISCELLANEOUS DETAILS

# STATE OF ILLINOIS DEPARTMENT OF TRANSPORTATION DIVISION OF HIGHWAYS

## PLANS FOR PROPOSED FEDERAL AID HIGHWAY FAU ROUTE 3734 (34th STREET) EAST END AV. TO HOLEMAN AV. RESURFACING SECTION: 09-00058-00-RS PROJECT: ARA-9003 (394) JOB No. C-91-780-09 VILLAGE OF SOUTH CHICAGO HEIGHTS COOK COUNTY

### STATE STANDARDS

- 000001-05 STANDARD SYMBOLS, ABBREVIATIONS, AND PATTERNS
- 424001-05 CURB RAMPS FOR SIDEWALKS
- 604001-03 FRAME AND LIDS TYPE 1
- 606001-04 CONCRETE CURB TYPE B & COMBINATION CONCRETE CURB & GUTTER
- 701606-06 URBAN LANE CLOSURE MULTILANE 2W
- 701701-06 URBAN LANE CLOSURE MULTILANE INTERSECTION
- 701801-04 LANE CLOSURE MULTILANE, 1W OR 2W  
CROSSWALK OR SIDEWALK CLOSURE
- 701901-01 TRAFFIC CONTROL DEVICES (SHEETS 1, 2, & 3)
- 780001-02 TYPICAL PAVEMENT MARKINGS

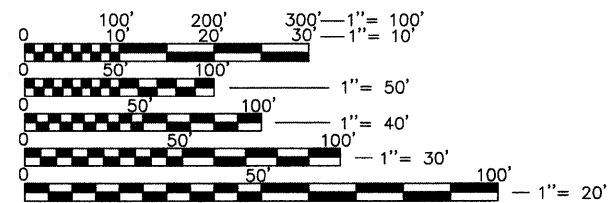


STRUCTURAL DESIGN TRAFFIC YEAR 2018  
PV=1700 SU=200 MU=100  
CLASS III ROADWAY  
ADT 2000  
FUNCTIONAL CLASSIFICATION=LOCAL ROADS  
IBR 3.0  
TRAFFIC FACTOR=0.24

COPYRIGHT © 2009  
JOSEPH A. SCHUDT & ASSOCIATES  
ALL RIGHTS RESERVED

**Joseph A. Schudt & Associates**  
19350 S. HARLEM AVENUE FRANKFORT, IL 60423  
PHONE: 708-720-1000 FAX: 708-720-1065  
ILLINOIS REGISTERED DESIGN FIRM No. 184-001172

CIVIL ENGINEERING LAND SURVEYING ENVIRONMENTAL LAND PLANNING GPS SERVICES

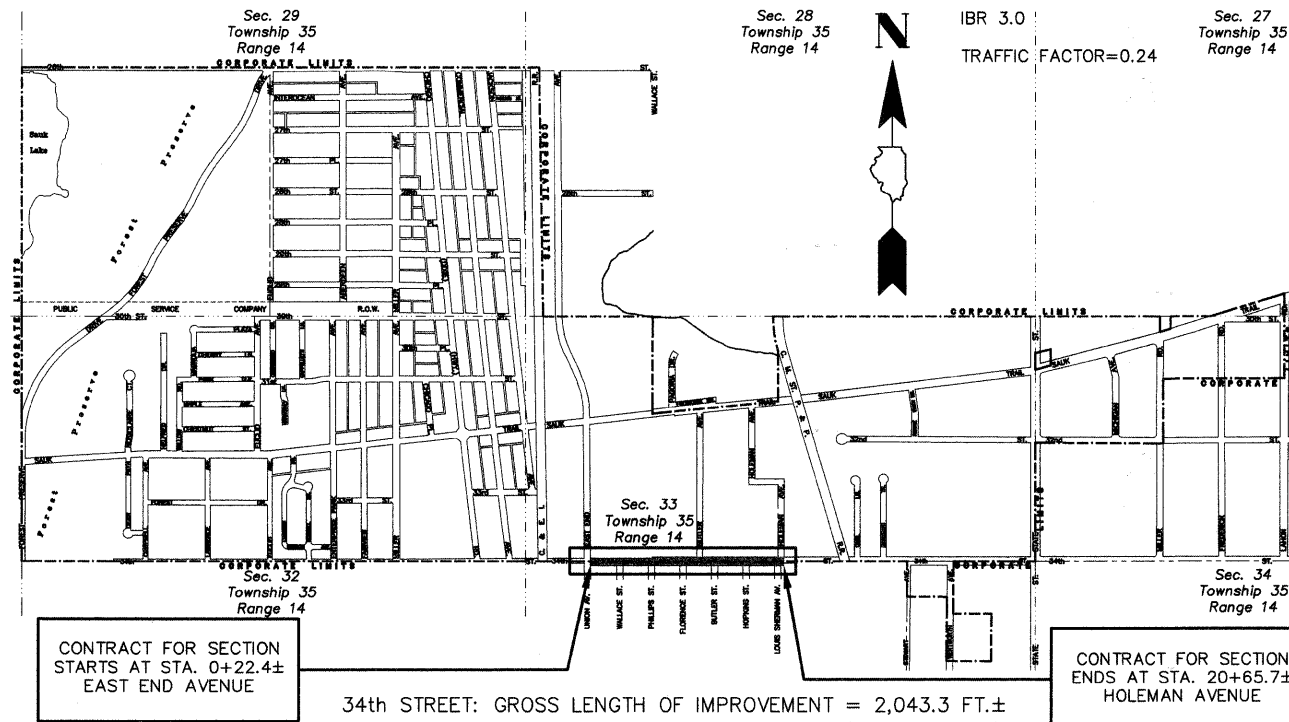


FULL SIZE PLANS HAVE BEEN PREPARED USING STANDARD ENGINEERING SCALES. REDUCED SIZED PLANS WILL NOT CONFORM TO STANDARD SCALES. IN MAKING MEASUREMENTS ON REDUCED PLANS, THE ABOVE SCALES MAY BE USED.

CALL J.U.L.I.E.  
JOINT UTILITY LOCATION  
INFORMATION FOR EXCAVATION  
1-800-892-0123 OR 811  
48 HOURS  
(TWO WORKING DAYS)  
TOLL FREE  
24 HOURS A DAY  
7 DAYS A WEEK

I.D.O.T. FIELD ENGINEER : MELCHOR MANGOBA 1-847-705-4408 SCHAUMBURG, IL.  
CONSULTANT : JOSEPH A. SCHUDT & ASSOCIATES, MATT HORAN 1-708-720-1000 FRANKFORT, IL.

CONTRACT No. 63284



CONTRACT FOR SECTION  
STARTS AT STA. 0+22.4±  
EAST END AVENUE

34th STREET: GROSS LENGTH OF IMPROVEMENT = 2,043.3 FT.±  
NET LENGTH OF IMPROVEMENT = 2,043.3 FT.± (0.387 MILES±)

CONTRACT FOR SECTION  
ENDS AT STA. 20+65.7±  
HOLEMAN AVENUE

PROJECT LOCATION  
NOT TO SCALE

*S. Matthew Heran*  
ILLINOIS PROFESSIONAL ENGINEER No. 062-019927  
SIGNED: 6-24-09  
LICENSE EXPIRES: 11/30/09

STATE OF ILLINOIS  
LICENSED PROFESSIONAL ENGINEER  
S. MATTHEW HERAN  
062-019927

STATE OF ILLINOIS  
DEPARTMENT OF TRANSPORTATION  
DIVISION OF HIGHWAYS

Approved: JUNE 24, 2009  
*Paul J. Moran* (MAYOR)  
Local Agency, Position

Passed: SEPTEMBER 2, 2009  
*Chris Chantler*  
District Engineer of Local Roads & Streets

Releasing for Bid Based on Limited Review: SEPTEMBER 1, 2009  
*Diana M. O'Keefe*  
Deputy Director of Highways, Region Engineer

PRINTED BY THE AUTHORITY  
OF THE STATE OF ILLINOIS

VILLAGE COORDINATION:

THE CONTRACTOR SHALL NOTIFY THE VILLAGE ENGINEER AT LEAST 72 HOURS IN ADVANCE OF BEGINNING WORK AND SHALL COORDINATE ALL CONSTRUCTION OPERATIONS WITH THE ENGINEER. THE CONTRACTOR SHALL NOTIFY THE PUBLIC WORKS DEPARTMENT OF THE VILLAGES OF STEGER AND SOUTH CHICAGO HEIGHTS 48 HOURS PRIOR TO ANY WORK IN ORDER TO OBTAIN VILLAGE UTILITY LOCATIONS. THE CONTRACTOR SHOULD PLAN HIS WORK TO AVOID ALL INTERFERENCE WITH THE UNDERGROUND UTILITIES.

PUBLIC OR PRIVATE UTILITIES:

THE LOCATION OF PUBLIC OR PRIVATE UTILITIES SHOWN ON THE PLANS ARE APPROXIMATE, AND THE DEPARTMENT DOES NOT GUARANTEE THEIR ACCURACY. THE CONTRACTOR WILL BE REQUIRED TO ASCERTAIN THE EXACT LOCATIONS OF SUCH UTILITIES AND EXERCISE CARE DURING CONSTRUCTION OPERATIONS, SO AS NOT TO DAMAGE THEM, IN ACCORDANCE WITH THE SPECIAL PROVISIONS AND ARTICLE 107.20 OF THE STANDARD SPECIFICATIONS. THE CONTRACTOR SHALL BE RESPONSIBLE FOR ANY DAMAGE OR DESTRUCTION OF PUBLIC OR PRIVATE PROPERTY AND SHALL RESTORE SUCH PROPERTY AT HIS OWN EXPENSE. COORDINATION OF ALL WORK INVOLVED IN THE CONSTRUCTION AREA WILL BE DISCUSSED AT A PRECONSTRUCTION CONFERENCE. THE CONTRACTOR SHALL USE ALL NECESSARY PRECAUTIONS AND PROTECTIVE MEASURES REQUIRED TO MAINTAIN EXISTING UTILITIES, SEWERS, AND APPURTENANCES THAT MUST BE KEPT IN OPERATION. IN PARTICULAR, THE CONTRACTOR WILL TAKE ADEQUATE MEASURES TO PREVENT THE UNDERMINING OF UTILITIES AND SEWERS WHICH ARE STILL IN SERVICE. WHENEVER THE CONTRACTOR ENCOUNTERS FACILITIES AND APPURTENANCES WITHIN THE LIMITS OF THE IMPROVEMENTS DURING TRENCHING OR AUGERING OPERATIONS, HE WILL BE REQUIRED TO HAND TRENCH IN THAT AREA IN ORDER NOT TO DAMAGE THE FACILITIES.

SURVEY MONUMENTS:

WHERE SECTION OR SUBSECTION MONUMENTS ARE ENCOUNTERED, THE ENGINEER SHALL BE NOTIFIED BEFORE SUCH MONUMENTS ARE REMOVED. THE CONTRACTOR SHALL PROTECT AND CAREFULLY PRESERVE ALL PROPERTY MARKS OR MONUMENTS UNTIL THE OWNER, HIS AGENT, OR AN AUTHORIZED SURVEYOR HAS WITNESSED OR OTHERWISE REFERENCED THEIR LOCATIONS.

DRAINAGE STRUCTURES:

WHEREVER DURING CONSTRUCTION OPERATIONS ANY LOOSE MATERIAL IS DEPOSITED IN THE FLOW LINE OF DRAINAGE STRUCTURES SUCH THAT THE NATURAL FLOW OF WATER IS OBSTRUCTED, IT SHALL BE REMOVED AT THE CLOSE OF EACH WORKING DAY. AT THE CONCLUSION OF CONSTRUCTION OPERATIONS, ALL DRAINAGE STRUCTURES SHALL BE FREE FROM DIRT AND DEBRIS. THE WORK SPECIFIED ABOVE WILL NOT BE PAID FOR SEPARATELY, BUT SHALL BE CONSIDERED AS INCIDENTAL TO THE CONTRACT. WHEN EXISTING DRAINAGE FACILITIES ARE DISTURBED, THE CONTRACTOR SHALL PROVIDE AND MAINTAIN TEMPORARY OUTLETS AND CONNECTIONS FOR ALL PRIVATE OR PUBLIC DRAINS, SEWERS, OR CATCH BASINS. HE SHALL PROVIDE FACILITIES TO TAKE IN ALL STORM WATER WHICH WILL BE RECEIVED BY THESE DRAINS AND SEWERS AND DISCHARGE THE SAME. HE SHALL PROVIDE AND MAINTAIN AN EFFICIENT PUMPING PLANT, IF NECESSARY, AND A TEMPORARY OUTLET AND BE PREPARED AT ALL TIMES TO DISPOSE OF THE WATER RECEIVED FROM THESE TEMPORARY CONNECTIONS. THIS WORK WILL NOT BE PAID FOR DIRECTLY BUT SHALL BE CONSIDERED INCIDENTAL TO THE CONTRACT.

FIELD OBSERVATION:

IT IS THE CONTRACTOR'S RESPONSIBILITY TO ASCERTAIN EXISTING FIELD CONDITIONS BEFORE BIDDING ON THE PROJECT, SPECIFICALLY AS THEY RELATE TO LUMP SUM ITEMS. IT IS THE CONTRACTORS RESPONSIBILITY TO VERIFY ALL DIMENSIONS AND CONDITIONS EXISTING IN THE FIELD PRIOR TO CONSTRUCTION AND ORDERING MATERIALS.

GENERAL NOTES:

ALL DISTURBED AREA WHERE RESTORATION IS NOT COVERED BY APPLICABLE SECTIONS OF THE SPECIAL PROVISIONS MUST BE RESTORED TO THE SATISFACTION OF THE ENGINEER. THE WORK SHALL BE CONSIDERED INCIDENTAL TO THE CONTRACT. SEPARATE PAYMENT WILL NOT BE MADE. 4" MIN. TOP SOIL AND CLASS I SEED.

THE EXACT LOCATIONS OF ALL UTILITIES SHALL BE VERIFIED BY THE CONTRACTOR BEFORE CONSTRUCTION. FOR LOCATIONS OF THE UTILITIES, CALL JULIE TOLL FREE AT 1-800-892-0123. IT IS THE CONTRACTORS RESPONSIBILITY TO LOCATE EXISTING TRAFFIC SIGNAL CABLES AND CONDUITS, AND STREET LIGHTING. AREA TRAFFIC SIGNAL MAINTENANCE AND OPERATIONS ENGINEER 1-847-705-4139. SEE ADDITIONAL SPECIAL PROVISION No. 14.

CONTRACTOR SHALL TAKE ALL NECESSARY MEASURES TO RESTORE ANY SPECIALIZED LANDSCAPING, (i.e. TREES, DECORATIVE ROCKS, SHRUBS, PLANTS, etc.) OR SHALL REPLACE IT, THE COST OF WHICH SHALL BE CONSIDERED INCIDENTAL TO THE CONTRACT.

GENERAL NOTES: (CONTINUED)

MATERIALS RESULTING FROM THE REMOVAL OF PAVEMENT, DRIVEWAYS, CURB AND GUTTER, BITUMINOUS SURFACES, SEWER WORK ETC. SHALL BE REMOVED AT THE END OF EACH DAY.

IT WILL BE THE CONTRACTORS RESPONSIBILITY TO NOTIFY RESIDENTS AND BUSINESS WHEN ACCESS TO THEIR DRIVEWAYS WILL BE TEMPORARILY CLOSED DUE TO CURB AND GUTTER AND/OR DRIVEWAY REPLACEMENT.

ACCESS TO DRIVEWAYS SHALL BE PROVIDED AT ALL TIMES EXCEPT DURING ACTUAL CONSTRUCTION ADJACENT THERE TO. TEMPORARY RAMPS SHALL BE CONSTRUCTED AS NEEDED TO PROVIDE SUCH ACCESS, UTILIZING CRUSHED STONE OR CRUSHED GRAVEL AND INCLUDED IN THE PAY ITEM FOR COMBINATION CURB AND GUTTER REMOVAL AND REPLACEMENT.

CONTRACTOR SHALL CO-ORDINATE CURB REMOVAL AND REPLACEMENT TO MINIMIZE DISRUPTION TO SHIPPING AND RECEIVING IN THE INDUSTRIAL PARK.

ANY SIGNS OR MAILBOXES THAT ARE IN CONFLICT WITH THE PROPOSED CONSTRUCTION SHALL BE REMOVED AND REPLACED IN ACCORDANCE WITH VILLAGE STANDARDS AND INCLUDED IN THE PAY ITEM FOR COMBINATION CURB AND GUTTER REMOVAL AND REPLACEMENT. MAIL SERVICE SHALL BE MAINTAINED AT ALL TIMES.

EXISTING PAVEMENT, DRIVEWAY PAVEMENT, CURB AND GUTTER AND SIDEWALK TO REMAIN IN PLACE SHALL BE SAW-CUT FULL DEPTH TO PROVIDE A NEAT VERTICAL FACE BETWEEN THE PROPOSED AND EXISTING AND SHALL BE INCLUDED IN THE APPROPRIATE REMOVAL PAY ITEM.

IN AREAS WHERE THE EXISTING DRIVEWAY, SIDEWALK, OR CURB AND GUTTER IS TO BE REMOVED AND REPLACED, THE REMOVAL AND DISPOSAL OF ANY ADDITIONAL MATERIAL REQUIRED TO ESTABLISH THE PROPOSED DRIVEWAY, SIDEWALK, OR CURB AND GUTTER SUBGRADE ELEVATION SHALL BE INCLUDED IN THE PAY ITEMS SIDEWALK REMOVAL OR COMBINATION CONCRETE CURB AND GUTTER REMOVE AND REPLACE.

THE CONTRACTOR SHALL PROVIDE AND INSTALL TWO (2) WEIGHTED SAND BAGS ON EACH TYPE I OR TYPE II BARRICADE USED. THE WEIGHTED SAND BAGS SHALL BE PLACED ACROSS EACH BOTTOM RAIL.

THE CONTRACTOR WILL ONLY BE ALLOWED TO REMOVE AND REPLACE CURB AND GUTTER ON ONE SIDE OF THE ROAD AT A TIME TO MINIMIZE CONGESTION. REPLACEMENT MUST BE COMPLETE ON ONE SIDE OF THE ROAD BEFORE THE CONTRACTOR IS ALLOWED TO BEGIN REMOVING CURB AND GUTTER ON THE OTHER SIDE OF THE ROAD.

INTERSECTING SIDE STREETS:


CONSTRUCTION IN INTERSECTING SIDE STREETS/ALLEYS WILL TERMINATE THIRTY THREE FEET (33') FROM THE CENTERLINE OF 34th STREET OR AS DIRECTED BY ENGINEER. SEE DETAIL PAGE 14. WORK WILL BE PAID FOR AT CONTRACT UNIT PRICE FOR HOT-MIX ASPHALT SURFACE REMOVAL (2").

NOTE:

ANY REFERENCE TO STANDARDS THROUGHOUT THE PLANS OR SPECIAL PROVISIONS SHALL BE INTERPRETED TO BE THE LATEST STANDARDS OF THE ILLINOIS DEPARTMENT OF TRANSPORTATION.

BOXED OUT ITEMS CALL OUT ITEMS INCIDENTAL TO THE CONTRACT.

N:\2009\09-026\Drawings\Construction Drawings\09-026.dwg, 03-NOTES, 03-03-09 1:46:29 PM, COPYRIGHT © JOSEPH A. SCHUDT & ASSOCIATES, -JAR

**Joseph A. Schudt & Associates**  
  
 19350 S. HARLEM AVENUE FRANKFORT, IL 60423  
 PHONE: 708-720-1000 FAX: 708-720-1065  
 ILLINOIS REGISTERED DESIGN FIRM No. 184-001172  
 CIVIL ENGINEERING LAND SURVEYING ENVIRONMENTAL LAND PLANNING GPS SERVICES


*34th Street Street Paving  
 East End Ave. to Holeman Ave.*

COPYRIGHT © 2009  
 JOSEPH A. SCHUDT & ASSOCIATES  
 ALL RIGHTS RESERVED

FILE NAME =	USER NAME =	DESIGNED - S.M.H.	REVISED - 8-24-09	STATE OF ILLINOIS DEPARTMENT OF TRANSPORTATION	<i>General Notes</i>	F.A.P. RTE.	SECTION	COUNTY	TOTAL SHEETS	SHEET NO.	
		DRAWN - J.A.R.	REVISED -			3734	09-00058-00-RS	COOK	12	2	
		PLOT SCALE =	REVISOR -			CONTRACT NO. 63284					
		CHECKED - S.M.H.	REVISED -			ILLINOIS FED. AID PROJECT AREA - 9003 (394)					
		PLOT DATE =	DATE - 6-24-09	SCALE: N/A	SHEET NO. 2 OF 12 SHEETS	STA.	TO STA.	Long Section Number Multiple County Names			

SUMMARY OF QUANTITIES			CONSTRUCTION TYPE CODE
CODE NO.	PAY ITEM	UNIT	I000
40600100	BITUMINOUS MATERIALS (PRIME COAT)	GAL	740
40600300	AGGREGATE (PRIME COAT)	TON	10
40600625	LEVELING BINDER (MACHINE METHOD) N50	TON	280
40603310	HOT-MIX ASPHALT SURFACE COURSE, MIX "C" N50	TON	665
42300400	PORTLAND CEMENT CONCRETE DRIVEWAY PAVEMENT 8"	SQ. YD	112
42400800	DETECTABLE WARNINGS	SQ. FT.	60
44000157	HOT MIX ASPHALT SURFACE REMOVAL, 2'	SQ. YD.	7400
44001700	COMBINATION CONCRETE CURB AND GUTTER REMOVAL AND REPLACEMENT	FOOT	2500
44004610	SIDEWALK REMOVAL AND REPLACEMENT (SPECIAL)	SQ. FT.	770
44201713	CLASS D PATCHES, TYPE I, 6 INCH	SQ. YD.	10
44201717	CLASS D PATCHES, TYPE II, 6 INCH	SQ. YD.	100
44201721	CLASS D PATCHES, TYPE III, 6 INCH	SQ. YD.	185
44201723	CLASS D PATCHES, TYPE IV, 6 INCH	SQ. YD.	912
44300300	AREA REFLECTIVE CRACK CONTROL TREATMENT SYSTEM A	SQ. YD.	6200
60206905	CATCH BASINS TYPE C TYPE I FRAME, OPEN LID	EACH	2
60234200	INLETS TYPE A, TYPE I FRAME, OPEN LID	EACH	3
60240240	INLET TYPE B, TYPE 6 FRAME AND GRATE	EACH	4
60252800	CATCH BASINS TO BE RECONSTRUCTED	EACH	1
60255500	MANHOLES TO BE ADJUSTED	EACH	12
60255700	MANHOLES TO BE ADJUSTED WITH NEW TYPE I FRAME, OPEN LID	EACH	1
60255900	MANHOLES TO BE ADJUSTED WITH NEW TYPE I FRAME, CLOSED LID	EACH	2
60260100	INLET TO BE ADJUSTED	EACH	2
60262700	INLETS TO BE RECONSTRUCTED	EACH	1
60265700	VALVE VAULTS TO BE ADJUSTED	EACH	2
60266100	VALVE VAULTS TO BE RECONSTRUCTED	EACH	1
60300310	FRAMES AND LIDS TO BE ADJUSTED (SPECIAL)	EACH	20
67100100	MOBILIZATION	L SUM	1
70101700	TRAFFIC CONTROL AND PROTECTION	L SUM	1
70300100	SHORT-TERM PAVEMENT MARKING	FOOT	1000
* 78000200	THERMOPLASTIC PAVEMENT MARKING - LINE 4"	FOOT	1400
* 78000400	THERMOPLASTIC PAVEMENT MARKING - LINE 6"	FOOT	450
* 78000600	THERMOPLASTIC PAVEMENT MARKING - LINE 12"	FOOT	60
* 78000650	THERMOPLASTIC PAVEMENT MARKING - LINE 24"	FOOT	160
20036200	PAINT CURB	FOOT	450
XX006947	HOT-MIX ASPHALT DRIVEWAY REMOVAL AND REPLACEMENT	SQ. YD.	900
XX004786	ADJUSTMENTS (SPECIAL)	EACH	3

\* DENOTES SPECIALTY ITEMS

**Joseph A. Schudt & Associates**  
  
 19350 S. HARLEM AVENUE FRANKFORT, IL 60423  
 PHONE: 708-720-1000 FAX: 708-720-1065  
 ILLINOIS REGISTERED DESIGN FIRM No. 184-001172  
 CIVIL ENGINEERING LAND SURVEYING ENVIRONMENTAL LAND PLANNING GPS SERVICES

*34th Street Street Paving  
 East End Ave. to Holeman Ave.*

COPYRIGHT © 2009  
 JOSEPH A. SCHUDT & ASSOCIATES  
 ALL RIGHTS RESERVED

FILE NAME =	USER NAME =	DESIGNED - S.M.H.	REVISED - 8-24-09	STATE OF ILLINOIS DEPARTMENT OF TRANSPORTATION	SUMMARY OF QUANTITIES	F.A.P. RTE.	SECTION	COUNTY	TOTAL SHEETS	SHEET NO.
	PLOT SCALE =	CHECKED - S.M.H.	REVISED -			3734	09-00058-00-RS	COOK	12	3
	PLOT DATE =	DATE - 6-24-09	REVISED -			SCALE: N/A		SHEET NO. 3 OF 12 SHEETS		STA. TO STA.

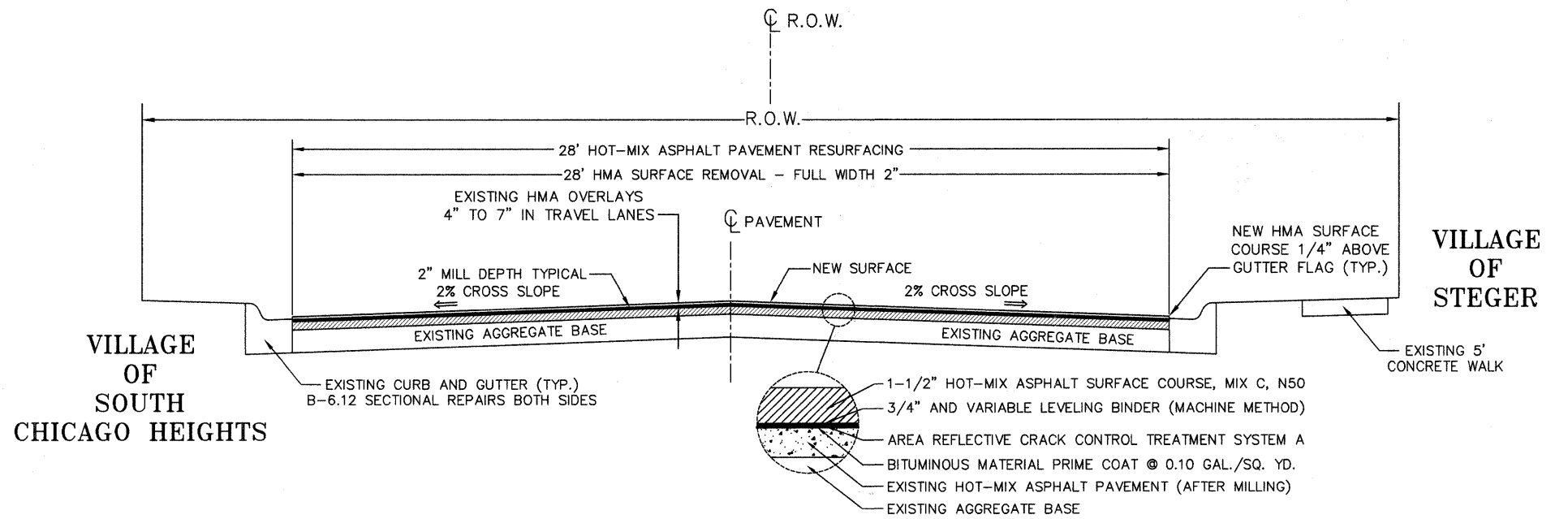
CONTRACTOR SHALL MILL BEFORE PATCHING.

MIX REQUIREMENT CHART SECTION 09-00058-00-RS	
ITEM	VOIDS
PAVEMENT RESURFACING HOT-MIX ASPHALT SURFACE COURSE, MIX C, N50, (IL 9.5mm) 1-1/2"	4% @ 50 GYR
LEVEL BINDER (MACHINE METHOD) N50, (IL 9.5mm) 3/4"	4% @ 50 GYR
PAVEMENT PATCHING CLASS "D" PATCHES TYPE I, II, III, IV 6 INCH (HMA BINDER IL-19mm)	4% @ 70 GYR
DRIVEWAYS HOT-MIX ASPHALT SURFACE, N50, MIX C (IL 9.5mm) 5" MINIMUM	4% @ 50 GYR
NOTE: THE UNIT WEIGHT USED TO CALCULATE ALL HMA SURFACE IS 112 POUNDS PER SQUARE YARD PER INCH THICKNESS.	

THE "AC TYPE" FOR POLYMERIZED HMA MIXES SHALL BE "SBS/SBR PG 70-22" AND FOR NON-POLYMERIZED HMA THE "AC TYPE" SHALL BE "PG 64-22" UNLESS MODIFIED BY DISTRICT ONE SPECIAL PROVISIONS. FOR "PERCENT OF RAP" SEE DISTRICT ONE SPECIAL PROVISIONS.

**Sewer Notes**

- ALL EXISTING FRAMES, GRATES, CASTINGS REMOVED AND REPLACED WITH NEW ARE "OWNER SALVAGE", AND SHALL BE TAKEN BY THE CONTRACTOR TO THE PUBLIC WORKS YARD OF THE RESPECTIVE MUNICIPALITY.
- REMOVAL OF EXISTING STRUCTURE FOR REPLACEMENT IS INCIDENTAL TO THAT ITEM.




**TYPICAL CURBED SECTION  
COLD MILLING and PAVING**

NO SCALE

34th STREET (30th STREET STEGER)  
East End Ave. to Holeman Ave.  
Sta. 0+22.4± to Sta. 20+65.7±

BOXED OUT ITEMS CALL OUT ITEMS INCIDENTAL TO THE CONTRACT.

**Joseph A. Schudt & Associates**  
  
 19350 S. HARLEM AVENUE FRANKFORT, IL 60423  
 PHONE: 708-720-1000 FAX: 708-720-1065  
 ILLINOIS REGISTERED DESIGN FIRM No. 184-001172  
 CIVIL ENGINEERING LAND SURVEYING ENVIRONMENTAL LAND PLANNING GPS SERVICES

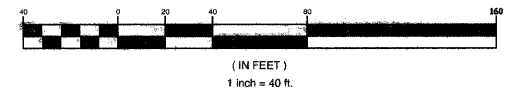
*34th Street Street Paving  
East End Ave. to Holeman Ave.*

COPYRIGHT © 2009  
JOSEPH A. SCHUDT & ASSOCIATES  
ALL RIGHTS RESERVED

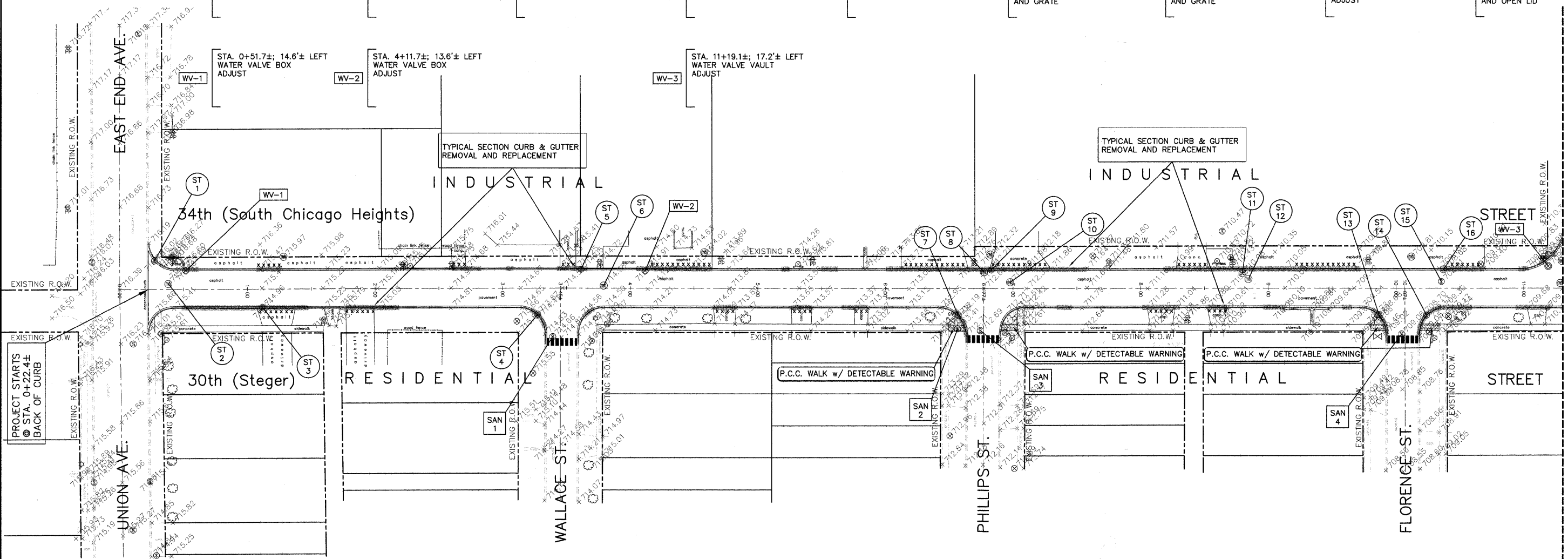
FILE NAME =	USER NAME =	DESIGNED - S.M.H.	REVISED - 8-24-09	STATE OF ILLINOIS DEPARTMENT OF TRANSPORTATION	TYPICAL SECTIONS AND HOT-MIX ASPHALT MIXTURE REQUIREMENTS	F.A.P. RTE.	SECTION	COUNTY	TOTAL SHEETS	SHEET NO.	
	PLOT SCALE =	CHECKED - S.M.H.	REVISED -			3734	09-00058-00-RS	COOK	12	4	
	PLOT DATE =	DATE - 6-24-09	REVISED -			CONTRACT NO. 63284		ILLINOIS FED. AID PROJECT ARA - 9003 (394)			
						SCALE: N/A	SHEET NO. 4 OF 12 SHEETS	STA.	TO STA.	Long Section Number Multiple County Names	



GRAPHIC SCALE



- SAN 1 STA. 3+39.2±; 38.0'± RIGHT SANITARY MANHOLE ADJUST w/ TYPE I FRAME AND CLOSED LID
- ST 1 STA. 0+27.2±; 22.3'± LEFT INLET RECONSTRUCT
- ST 2 STA. 0+38.1±; 4.3'± LEFT STORM MANHOLE ADJUST
- ST 3 STA. 1+11.7±; 14.2'± RIGHT INLET TYPE A w/ TYPE I FRAME AND GRATE
- ST 4 STA. 3+27.5±; 20.5'± RIGHT INLET TYPE B w/ TYPE 6 FRAME AND GRATE
- ST 5 STA. 3+61.5±; 14.8'± LEFT INLET ADJUST
- ST 6 STA. 3+79.3±; 2.1'± LEFT STORM MANHOLE ADJUST
- ST 7 STA. 6+57.0±; 21.2'± RIGHT INLET TYPE B ADJUST w/ TYPE 6 FRAME AND GRATE
- ST 8 STA. 6+78.0±; 13.0'± LEFT STORM MANHOLE ADJUST
- ST 9 STA. 6+82.9±; 14.5'± LEFT INLET ADJUST
- ST 10 STA. 6+97.7±; 4.9'± LEFT STORM MANHOLE ADJUST w/ TYPE I FRAME AND OPEN LID
- ST 11 STA. 8+79.6±; 11.8'± LEFT CATCH BASIN RECONSTRUCT
- ST 12 STA. 8+83.0±; 6.0'± LEFT STORM MANHOLE ADJUST
- ST 13 STA. 9+86.5±; 20.7'± RIGHT INLET TYPE B ADJUST w/ TYPE 6 FRAME AND GRATE
- ST 14 STA. 10+23.7±; 21.1'± RIGHT INLET TYPE B NEW INLET TYPE B w/ TYPE 6 FRAME AND GRATE
- ST 15 STA. 10+35.5±; 5.2'± LEFT STORM MANHOLE STRUCTURE MANHOLE ADJUST
- ST 16 STA. 10+37.2±; 14.7'± LEFT CATCH BASIN NEW CATCH BASIN TYPE C w/ TYPE I FRAME AND OPEN LID
- WV-1 STA. 0+51.7±; 14.6'± LEFT WATER VALVE BOX ADJUST
- WV-2 STA. 4+11.7±; 13.6'± LEFT WATER VALVE BOX ADJUST
- WV-3 STA. 11+19.1±; 17.2'± LEFT WATER VALVE VAULT ADJUST
- SAN 2 STA. 6+56.5±; 31.6'± RIGHT SANITARY MANHOLE ADJUST
- SAN 3 STA. 6+74.4±; 33.0'± RIGHT SANITARY MANHOLE ADJUST w/ TYPE I FRAME AND CLOSED LID
- SAN 4 STA. 10+04.4±; 35.9'± RIGHT SANITARY MANHOLE ADJUST



MATCH LINE - SEE SHEET 6 OF 12

CONTRACTOR SHALL CO-ORDINATE CURB REMOVAL AND REPLACEMENT TO MINIMIZE DISRUPTION TO SHIPPING AND RECEIVING IN THE INDUSTRIAL PARK.

- CURB AND GUTTER REMOVAL AND REPLACEMENT
- DRIVEWAY REMOVAL AND REPLACEMENT
- BUTT JOINT

**Joseph A. Schudt & Associates**  
 19350 S. HARLEM AVENUE FRANKFORT, IL 60423  
 PHONE: 708-720-1000 FAX: 708-720-1065  
 ILLINOIS REGISTERED DESIGN FIRM No. 184-001172  
 CIVIL ENGINEERING LAND SURVEYING ENVIRONMENTAL LAND PLANNING GPS SERVICES

*34th Street Street Paving  
 East End Ave. to Holeman Ave.*

COPYRIGHT © 2009  
 JOSEPH A. SCHUDT & ASSOCIATES  
 ALL RIGHTS RESERVED

FILE NAME =	USER NAME =	DESIGNED - S.M.H.	REVISED - 8-24-09	STATE OF ILLINOIS DEPARTMENT OF TRANSPORTATION	CONSTRUCTION PLAN	F.A.P. RTE. 3734	SECTION 09-00058-00-RS	COUNTY COOK	TOTAL SHEETS 12	SHEET NO. 5	
PLOT SCALE =	CHECKED - S.M.H.	REVISIONS	SCALE: 1" = 40'			SHEET NO. 5 OF 12 SHEETS	STA. 0+22.4± TO STA. 11+26.0±	CONTRACT NO. 63284		ILLINOIS FED. AID PROJECT AREA - 9003 (394)	
PLOT DATE =	DATE - 6-24-09	REVISIONS	Long Section Number Multiple County Names			09-026.dwg		09-026			

I:\2009\09-026\Drawings\Construction Drawings\09-026.dwg, 05:46:51 PM, COPYRIGHT, JOSEPH A. SCHUDT & ASSOCIATES - JAR



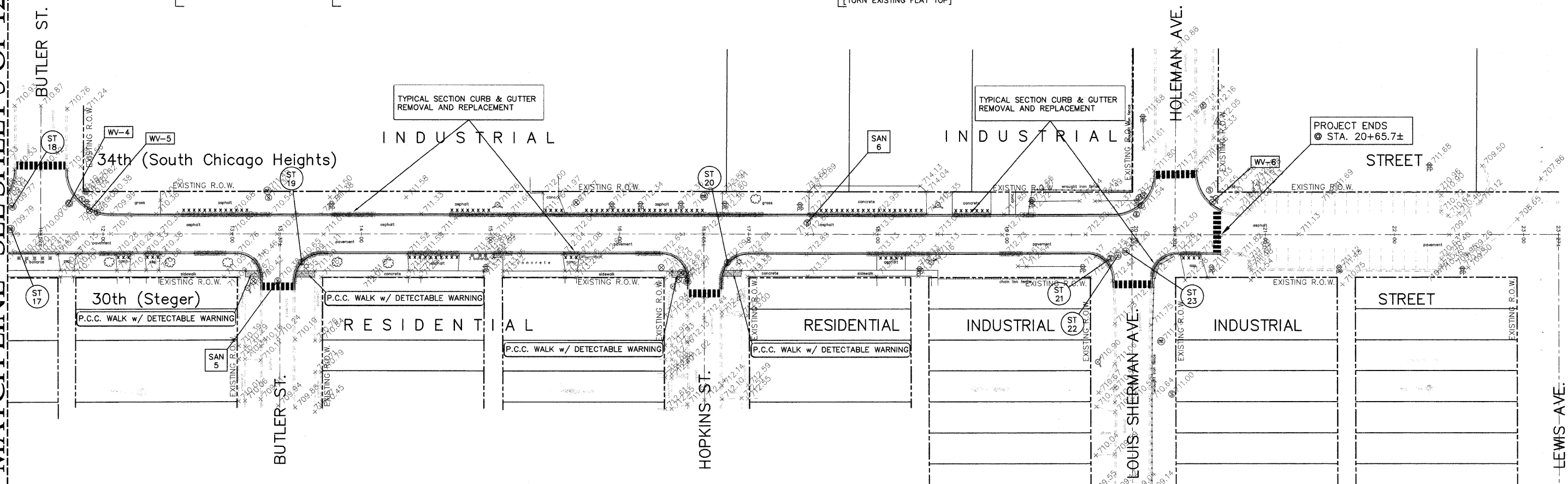
GRAPHIC SCALE



(IN FEET)  
1 inch = 40 ft.

- SAN 5 STA. 13+35.3±; 36.2'± RIGHT SANITARY MANHOLE ADJUST
- ST 17 STA. 11+28.6±; 4.0'± LEFT STORM MANHOLE ADJUST
- WV-4 STA. 11+73.6±; 23.8'± LEFT WATER VALVE VAULT ADJUST
- ST 18 STA. 11+29.8±; 21.2'± LEFT STORM MANHOLE ADJUST
- WV-5 STA. 11+89.4±; 18.1'± LEFT WATER VALVE BOX IN CURB
- ST 19 STA. 13+53.6±; 21.8'± RIGHT NEW INLET TYPE B w/ TYPE 6 FRAME AND GRATE
- ST 20 STA. 16+83.5±; 22.0'± RIGHT INLET TYPE B NEW INLET TYPE B w/ TYPE 6 FRAME AND GRATE
- WV-6 STA. 20+60.0±; 25.0'± LEFT WATER VALVE VAULT RECONSTRUCT w/ TYPE I COVER AND CLOSED LID [TURN EXISTING FLAT TOP]
- SAN 6 STA. 17+45.3±; 8.9'± LEFT SANITARY MANHOLE ADJUST
- ST 21 STA. 19+80.4±; 18.5'± RIGHT INLET NEW INLET TYPE A w/ TYPE I FRAME AND OPEN LID
- ST 22 STA. 19+85.0±; 18.0'± RIGHT CATCH BASIN NEW CATCH BASIN TYPE C w/ TYPE I FRAME AND OPEN LID
- ST 23 STA. 19+92.0±; 13.0'± RIGHT STORM MANHOLE ADJUST

MATCH LINE - SEE SHEET 5 OF 12



CONTRACTOR SHALL CO-ORDINATE CURB REMOVAL AND REPLACEMENT TO MINIMIZE DISRUPTION TO SHIPPING AND RECEIVING IN THE INDUSTRIAL PARK.

- CURB AND GUTTER REMOVAL AND REPLACEMENT
- DRIVEWAY REMOVAL AND REPLACEMENT
- BUTT JOINT

**Joseph A. Schudt & Associates**  
 19350 S. HARLEM AVENUE FRANKFORT, IL 60423  
 PHONE: 708-720-1000 FAX: 708-720-1065  
 ILLINOIS REGISTERED DESIGN FIRM No. 184-001172  
 CIVIL ENGINEERING LAND SURVEYING ENVIRONMENTAL LAND PLANNING GPS SERVICES

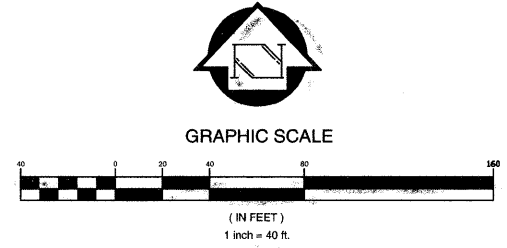
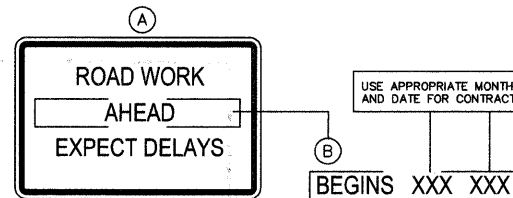
*34th Street Street Paving  
 East End Ave. to Holeman Ave.*

COPYRIGHT © 2009  
 JOSEPH A. SCHUDT & ASSOCIATES  
 ALL RIGHTS RESERVED

FILE NAME =	USER NAME =	DESIGNED - S.M.H.	REVISED - 8-24-09	STATE OF ILLINOIS DEPARTMENT OF TRANSPORTATION	CONSTRUCTION PLAN	F.A.P. RTE. 3734	SECTION 09-00058-00-RS	COUNTY COOK	TOTAL SHEETS 12	SHEET NO. 6		
		DRAWN - J.A.R.	REVISED -			SCALE: 1" = 40'	SHEET NO. 6 OF 12 SHEETS	STA. 11+26.0±	TO STA. 20+65.7±	ILLINOIS FED. AID PROJECT AREA - 9003 (394)		
		CHECKED - S.M.H.	REVISED -			Long Section Number Multiple County Names						
		DATE - 6-24-09	REVISED -			09-026.dwg 09-026						

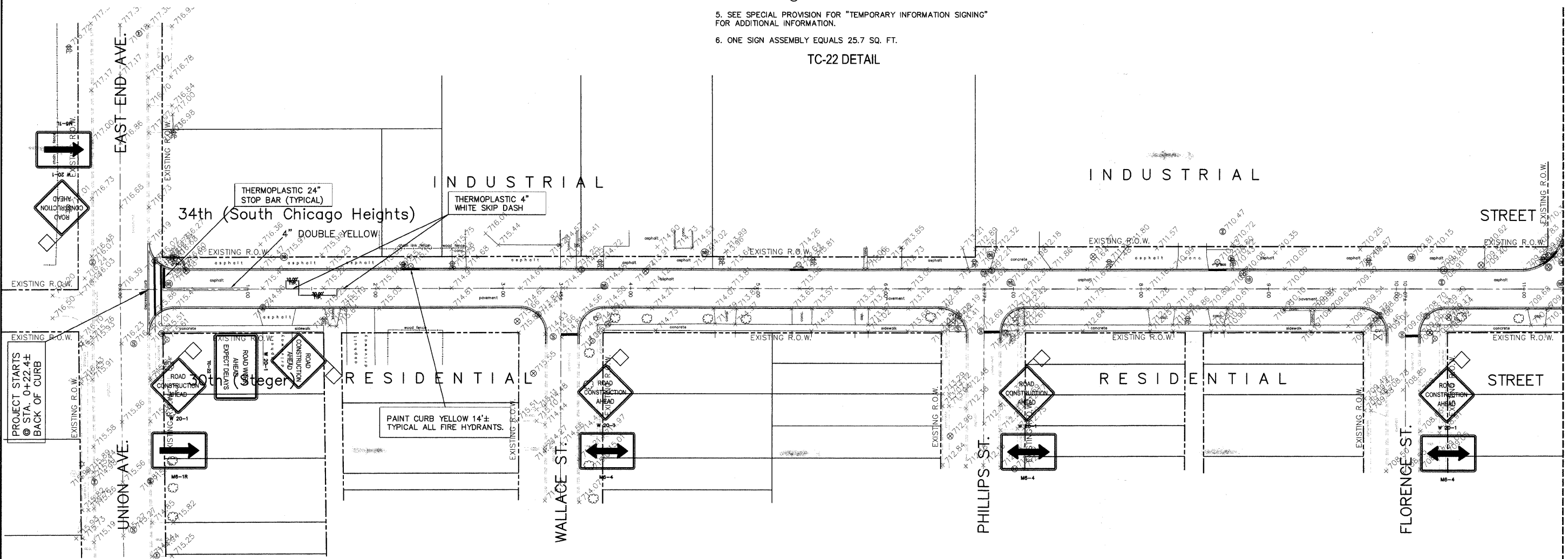
M:\2009\09-026\Drawings\Construction Drawings\09-026.dwg, 08:34:45 AM, 11/18/09 11:48:51 AM, COPYRIGHT, JOSEPH A. SCHUDT & ASSOCIATES, JAR





- NOTES:
1. USE BLACK LETTERING ON ORANGE BACKGROUND.
  2. ERECT SIGNS IN ADVANCE OF THE LOCATION FOR THE "ROAD CONSTRUCTION AHEAD" SIGN AT LOCATIONS AS DIRECTED BY THE ENGINEER.
  3. ERECT SIGN (A) WITH INSTALLED PANEL (B) ONE WEEK PRIOR TO THE START OF CONSTRUCTION.
  4. REMOVE PANEL (B) SOON AFTER THE START OF CONSTRUCTION.
  5. SEE SPECIAL PROVISION FOR "TEMPORARY INFORMATION SIGNING" FOR ADDITIONAL INFORMATION.
  6. ONE SIGN ASSEMBLY EQUALS 25.7 SQ. FT.

TC-22 DETAIL



CONTRACTOR SHALL CO-ORDINATE CURB REMOVAL AND REPLACEMENT TO MINIMIZE DISRUPTION TO SHIPPING AND RECEIVING IN THE INDUSTRIAL PARK.

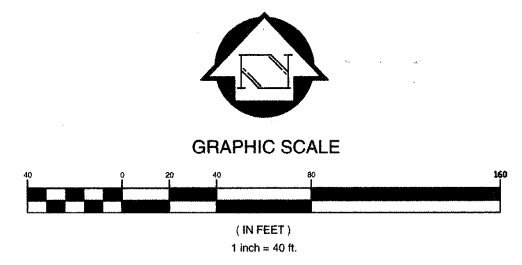
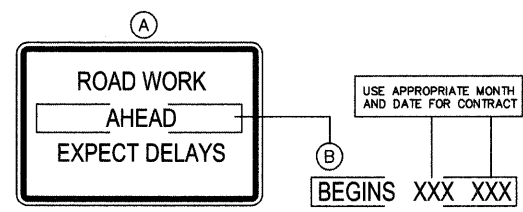
**Joseph A. Schudt & Associates**  
 19350 S. HARLEM AVENUE FRANKFORT, IL 60423  
 PHONE: 708-720-1000 FAX: 708-720-1065  
 ILLINOIS REGISTERED DESIGN FIRM No. 184-001172  
 CIVIL ENGINEERING LAND SURVEYING ENVIRONMENTAL LAND PLANNING GPS SERVICES

*34th Street Street Paving  
 East End Ave. to Holeman Ave.*

FILE NAME =	USER NAME =	DESIGNED - S.M.H.	REVISED - 8-24-09	STATE OF ILLINOIS DEPARTMENT OF TRANSPORTATION	TRAFFIC CONTROL & PAVEMENT MARKINGS	F.A.P. RTE. 3734	SECTION 09-00058-00-RS	COUNTY COOK	TOTAL SHEETS 12	SHEET NO. 7	
PLOT SCALE =	CHECKED - S.M.H.	REVISED -	REVISED -			SCALE: 1" = 40'	SHEET NO. 7 OF 12 SHEETS	STA. 0+22.4± TO STA. 11+26.0±	CONTRACT NO. 63284		ILLINOIS FED. AID PROJECT AREA - 9003 (364)
PLOT DATE =	DATE - 6-24-09	REVISED -	REVISED -			Long Section Number Multiple County Names		09-026.dwg		09-026	

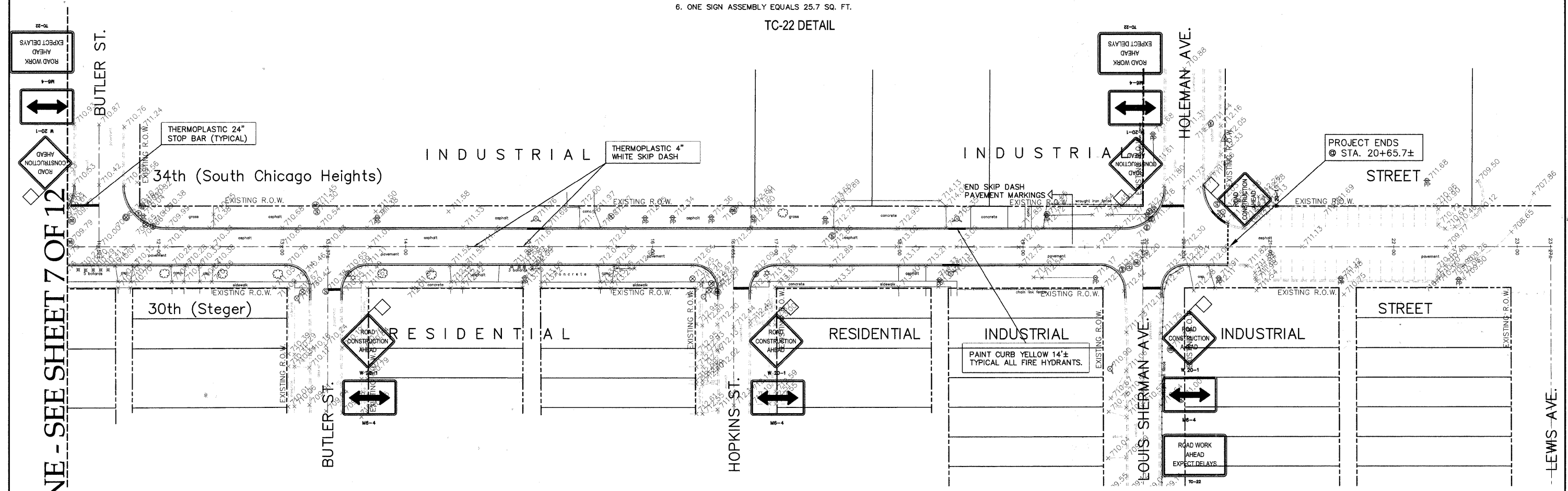
M:\2009\09-026\Drawings\Construction\Drawings\09-026.dwg, 07-30-09 10:51:11 PM, COPYRIGHT, JOSEPH A. SCHUDT & ASSOCIATES, JAA

MATCH LINE - SEE SHEET 8 OF 12



- NOTES:
1. USE BLACK LETTERING ON ORANGE BACKGROUND.
  2. ERECT SIGNS IN ADVANCE OF THE LOCATION FOR THE "ROAD CONSTRUCTION AHEAD" SIGN AT LOCATIONS AS DIRECTED BY THE ENGINEER.
  3. ERECT SIGN (A) WITH INSTALLED PANEL (B) ONE WEEK PRIOR TO THE START OF CONSTRUCTION.
  4. REMOVE PANEL (B) SOON AFTER THE START OF CONSTRUCTION.
  5. SEE SPECIAL PROVISION FOR "TEMPORARY INFORMATION SIGNING" FOR ADDITIONAL INFORMATION.
  6. ONE SIGN ASSEMBLY EQUALS 25.7 SQ. FT.

TC-22 DETAIL



CONTRACTOR SHALL CO-ORDINATE CURB REMOVAL AND REPLACEMENT TO MINIMIZE DISRUPTION TO SHIPPING AND RECEIVING IN THE INDUSTRIAL PARK.

**Joseph A. Schudt & Associates**  
 19350 S. HARLEM AVENUE FRANKFORT, IL 60423  
 PHONE: 708-720-1000 FAX: 708-720-1065  
 ILLINOIS REGISTERED DESIGN FIRM No. 184-001172  
 CIVIL ENGINEERING LAND SURVEYING ENVIRONMENTAL LAND PLANNING GPS SERVICES

*34th Street Street Paving  
 East End Ave. to Holeman Ave.*

COPYRIGHT © 2009  
 JOSEPH A. SCHUDT & ASSOCIATES  
 ALL RIGHTS RESERVED

FILE NAME =	USER NAME =	DESIGNED - S.M.H.	REVISED - 8-24-09	STATE OF ILLINOIS DEPARTMENT OF TRANSPORTATION	TRAFFIC CONTROL & PAVEMENT MARKINGS	F.A.P. RTE.	SECTION	COUNTY	TOTAL SHEETS	SHEET NO.
	PLOT SCALE =	DRAWN - J.A.R.	REVISED -			3734	09-00058-00-RS	COOK	12	8
	PLOT DATE =	CHECKED - S.M.H.	REVISED -			CONTRACT NO. 63284		ILLINOIS FED. AID PROJECT AREA - 9003 (394)		

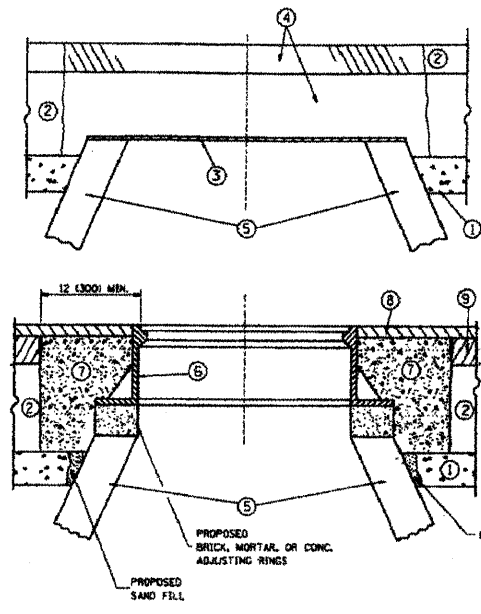
M:\2009\09-026\Drawings\Construction\Drawings\09-026.dwg, 08-24-09 1:50:38 PM, COPYRIGHT: JOSEPH A. SCHUDT & ASSOCIATES - JAR

MATCH LINE - SEE SHEET 7 OF 12



CONTRACT NO. 60485			
F.A.P. RTE.	SECTION	COUNTY	TOTAL SHEETS
3734	09-00058-00-RS	COOK	12
STA.	TO STA.		SHEET NO.
			9
ILLINOIS FED. AID PROJECT			

CONTRACT NO. 60485			
F.A.P. RTE.	SECTION	COUNTY	TOTAL SHEETS
3734	09-00058-00-RS	COOK	12
STA.	TO STA.		SHEET NO.
			9
ILLINOIS FED. AID PROJECT			



**CONSTRUCTION PROCEDURES**

**STAGE 1 (BEFORE PAVEMENT MILLING)**

- REMOVE A MINIMUM OF 12 (300) OF THE PAVEMENT FROM AROUND THE STRUCTURE.
- REMOVE THE EXISTING FRAME AND LID FROM THE STRUCTURE.
- COVER THE STRUCTURE OPENING WITH A 36 (900) DIAMETER METAL PLATE.
- BACKFILL WITH CRUSHED STONE AND A MINIMUM 1/2 (140) THICK HMA SURFACE MIX APPROVED BY THE ENGINEER.

**STAGE 2 (AFTER PAVEMENT MILLING)**

- REMOVE THE HMA SURFACE MIX AND CRUSHED STONE.
- INSTALL THE FRAME AND LID; ADJUST THE FRAME TO ITS FINAL SURFACE ELEVATION.
- THE SURROUNDING SPACE SHALL BE FILLED WITH CLASS S1 CONCRETE, OR HMA SURFACE COURSE OR HMA BINDER COURSE TO THE ELEVATION OF THE SURFACE OF THE EXISTING BASE COURSE OR THE BINDER COURSE.

THE PROCEDURE EXPLAINED ABOVE SHALL CONFORM TO THE APPLICABLE PORTIONS OF SECTIONS 353, 406, 502, AND 805 OF THE STANDARD SPECIFICATIONS.

- LEGEND:**
- ① SUB-BASE GRANULAR MATERIAL
  - ② EXISTING PAVEMENT
  - ③ 36 (900) DIAMETER METAL PLATE
  - ④ PROPOSED CRUSHED STONE AND HMA SURFACE MIX
  - ⑤ EXISTING STRUCTURE
  - ⑥ FRAME AND LID (SEE NOTES)
  - ⑦ CLASS S1 CONCRETE, HMA SURFACE COURSE OR HMA BINDER COURSE
  - ⑧ PROPOSED HMA SURFACE COURSE
  - ⑨ PROPOSED HMA BINDER COURSE

**LOCATION OF STRUCTURES:**

THE CONTRACTOR WILL BE REQUIRED TO KEEP A RECORD OF THE LOCATIONS OF THE BURIED STRUCTURES ACCORDING TO THE STATION AND DISTANCE LEFT OR RIGHT OF THE CENTERLINE OF PAVEMENT. UPON COMPLETION OF THE WORK, THE CONTRACTOR WILL DELIVER THE RECORD TO THE ENGINEER.

**BASIS OF PAYMENT:** THIS WORK WILL BE PAID FOR AT THE CONTRACT UNIT PRICE PER EACH FOR "FRAMES AND LIDS TO BE ADJUSTED, SPECIAL." NEW FRAMES AND LIDS, WHEN SPECIFIED, WILL BE PAID FOR SEPARATELY.

**DETAILS FOR FRAMES AND LIDS ADJUSTMENT WITH MILLING**

ALL DIMENSIONS ARE IN INCHES (MILLIMETERS) UNLESS OTHERWISE SHOWN.

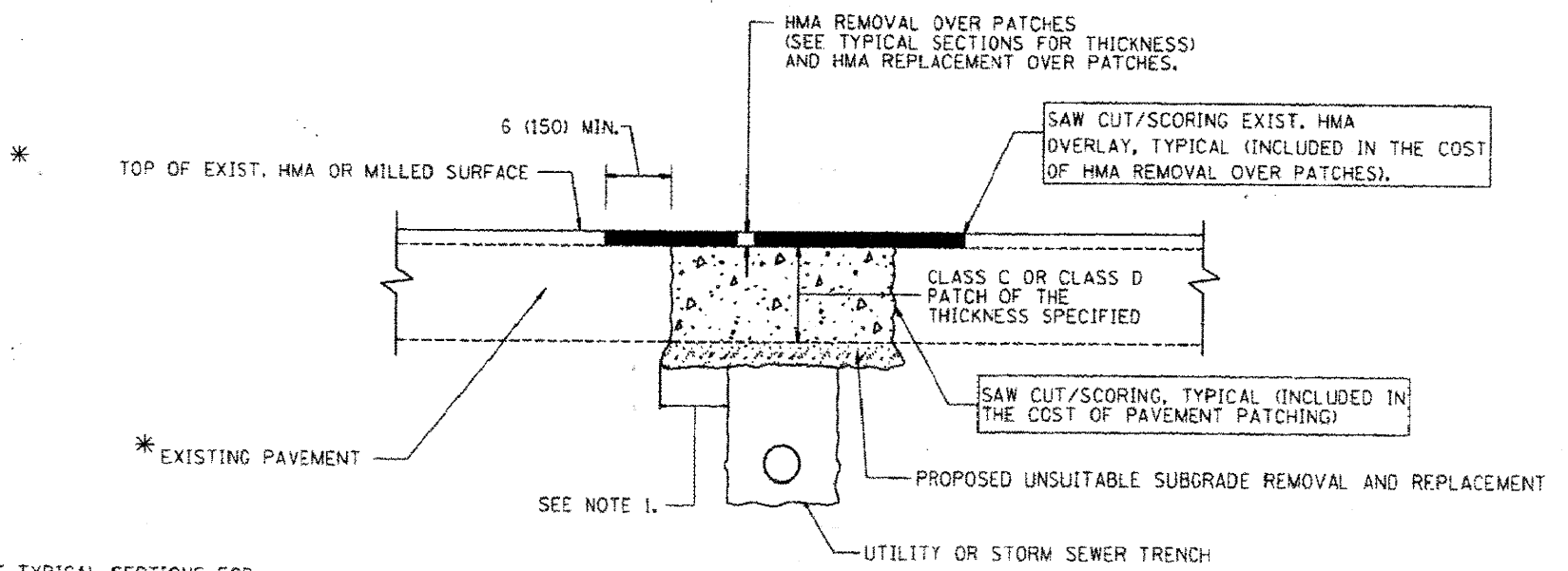
REVISION	DATE
R. SHAH	02/27/09
R. SHAH	03/20/09
R. SHAH	03/21/09
A. ARBIS	03/21/09
R. WREDEMAN	06/14/09
R. BOND	07/01/09

ILLINOIS DEPARTMENT OF TRANSPORTATION

**DETAILS FOR FRAMES AND LIDS ADJUSTMENT WITH MILLING**

SCALE: VERT. NONE  
HORIZ. 1/2"=1'-0"  
PLOT DATE: 02/27/2009

DRAWN BY: BD600-03 (BD-8)  
CHECKED BY: REVISION DATE: 02/27/09



\* SEE TYPICAL SECTIONS FOR THICKNESS AND MATERIALS

**NOTES:**

- THE WIDTH OF THE FULL DEPTH PATCH OVER A TRENCH SHALL BE 12 (300) WIDER ON EACH SIDE OF THE TRENCH.
- FOR METHOD OF MEASUREMENT AND BASIS OF PAYMENT, SEE RECURRING SPECIAL PROVISION "PATCHING WITH HOT-MIX ASPHALT OVERLAY REMOVAL".

**HMA PATCHING:**

NO PATCHING EXCAVATION SHALL REMAIN UNFILLED OVERNIGHT.  
NO STOCKPILING OF EXCAVATED MATERIAL WILL BE ALLOWED.

**SEQUENCE OF CONSTRUCTION**

- REMOVE THE EXISTING HMA MATERIAL OVER THE AREA TO BE PATCHED.
- REMOVE AND REPLACE FULL DEPTH PATCHES
- REPLACE HMA MATERIAL OVER THE AREA TO BE PATCHED.

ALL DIMENSIONS ARE IN INCHES (MILLIMETERS) UNLESS OTHERWISE SHOWN.

NO.	REVISION	DATE
1		
2		
3		
4		
5		
6		
7		
8		
9		

ILLINOIS DEPARTMENT OF TRANSPORTATION

**PAVEMENT PATCHING FOR HMA SURFACED PAVEMENT**

SCALE: VERT. NONE  
HORIZ. 1/2"=1'-0"  
PLOT DATE: 02/27/2009

DRAWN BY: BD600-04 (BD-22)  
CHECKED BY: REVISION DATE: 02/27/09

**Joseph A. Schudt & Associates**

19350 S. HARLEM AVENUE FRANKFORT, IL 60423  
PHONE: 708-720-1000 FAX: 708-720-1065  
ILLINOIS REGISTERED DESIGN FIRM No. 184-001172

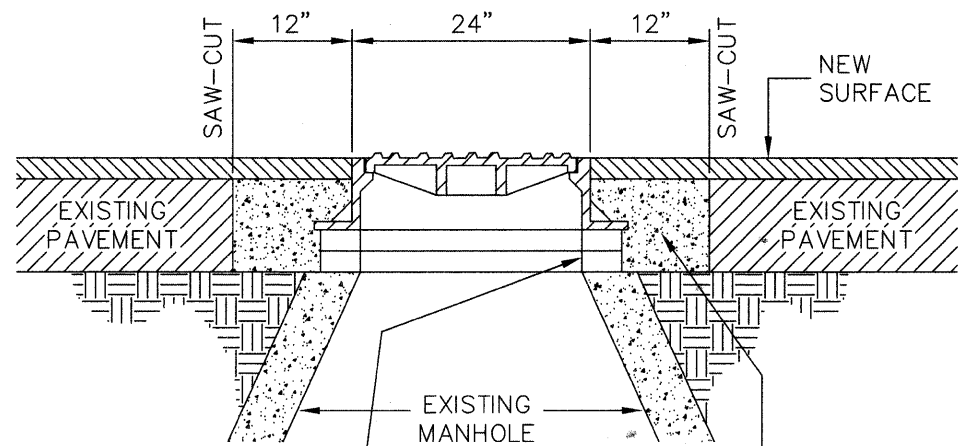
CIVIL ENGINEERING LAND SURVEYING ENVIRONMENTAL LAND PLANNING GPS SERVICES

**34th Street Street Paving  
East End Ave. to Holeman Ave.**

COPYRIGHT © 2009  
JOSEPH A. SCHUDT & ASSOCIATES  
ALL RIGHTS RESERVED

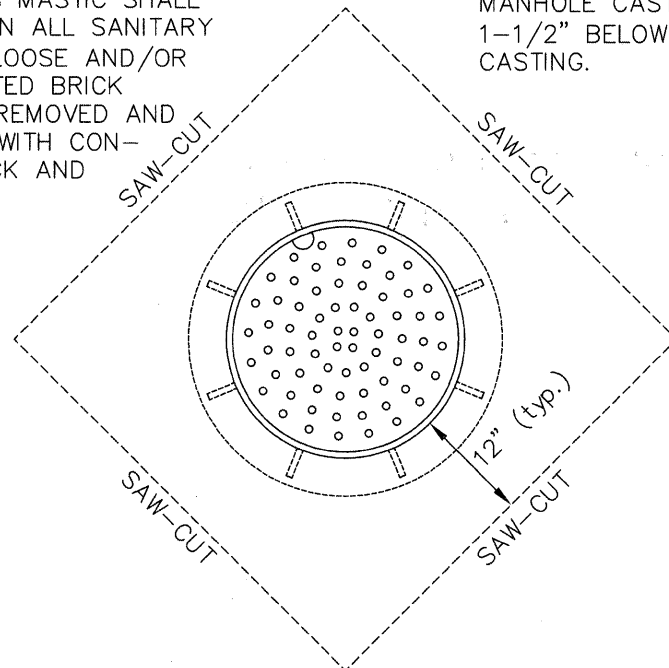
FILE NAME =	USER NAME =	DESIGNED - S.M.H.	REVISED - 8-24-09	STATE OF ILLINOIS DEPARTMENT OF TRANSPORTATION	MISCELLANEOUS DETAILS	F.A.P. RTE.	SECTION	COUNTY	TOTAL SHEETS	SHEET NO.	
		DRAWN - J.A.R.	REVISED -			3734	09-00058-00-RS	COOK	12	9	
		CHECKED - S.M.H.	REVISED -			CONTRACT NO. 63284					
		DATE - 6-24-09	REVISED -			ILLINOIS FED. AID PROJECT AREA - 9003 (394)					
						SCALE: N/A		SHEET NO. 9 OF 12 SHEETS		STA. TO STA.	

M:\2009\09-026\Drawings\Construction Drawings\09-026.dwg 09-026.dwg 1:51:08 PM, COPYRIGHT, JOSEPH A. SCHUDT & ASSOCIATES, JAS



SET CASTING TO GRADE ON PRECAST ADJUSTING RINGS MORTARED INTO PLACE. BITUMINOUS MASTIC SHALL BE USED ON ALL SANITARY SEWERS. LOOSE AND/OR DETERIORATED BRICK SHALL BE REMOVED AND REPLACED WITH CONCRETE BRICK AND MORTAR.

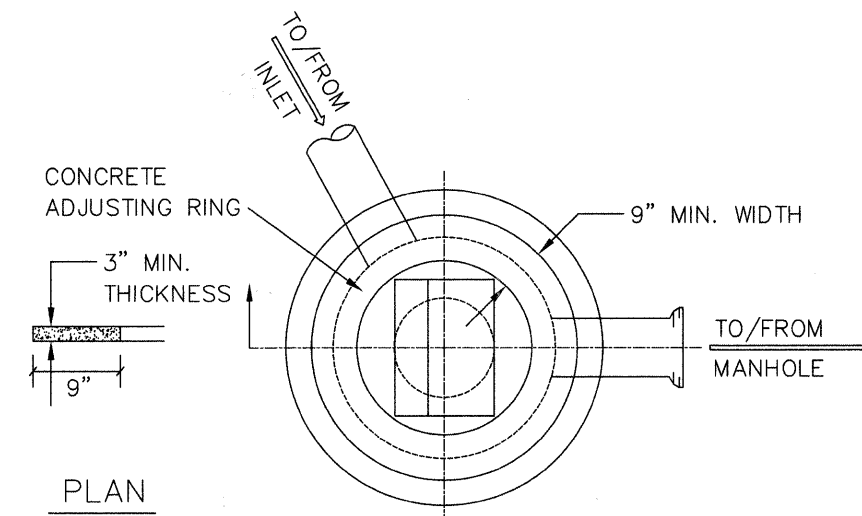
PLACE HOT-MIX ASPHALT BINDER 4" BELOW EXISTING BEARING FLANGE OF THE MANHOLE CASTING TO 1-1/2" BELOW TOP CASTING.



- ① ADJUSTING RINGS SHALL BE PRECAST AND SHALL BE USED FOR SANITARY MANHOLES, STORM SEWER MANHOLES, VALVE VAULTS, CATCH BASINS, AND INLETS.
- ② ADJUSTMENTS TO BE DONE AFTER COLD MILLING, AND/OR LEVELING.

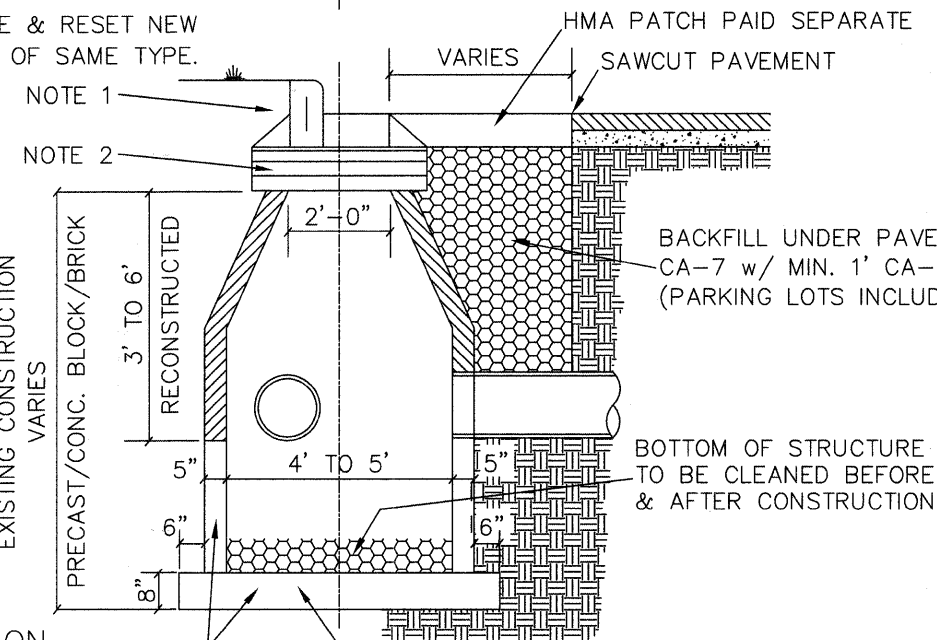
### CASTING ADJUSTMENT (ASPH. PVT.)

## RECONSTRUCT CATCHBASIN OR RECONSTRUCT INLET



### PLAN

REMOVE & RESET NEW FRAME OF SAME TYPE.




### SECTION

EXISTING CONSTRUCTION VARIES  
PRECAST/CONC. BLOCK/BRICK  
RECONSTRUCTED  
5"  
6"  
8"

CONCRETE BASE

NOTE 1:  
BACKFILL NON-PAVED AREA  
w/ COMPACTED EARTH AND  
4" TOPSOIL w/ CLASS I SEED

NOTE 2:  
MINIMUM OF ONE (1) 3" ADJ.  
RING SHALL BE PLACED UNDER  
EACH FRAME. MAX. 9"

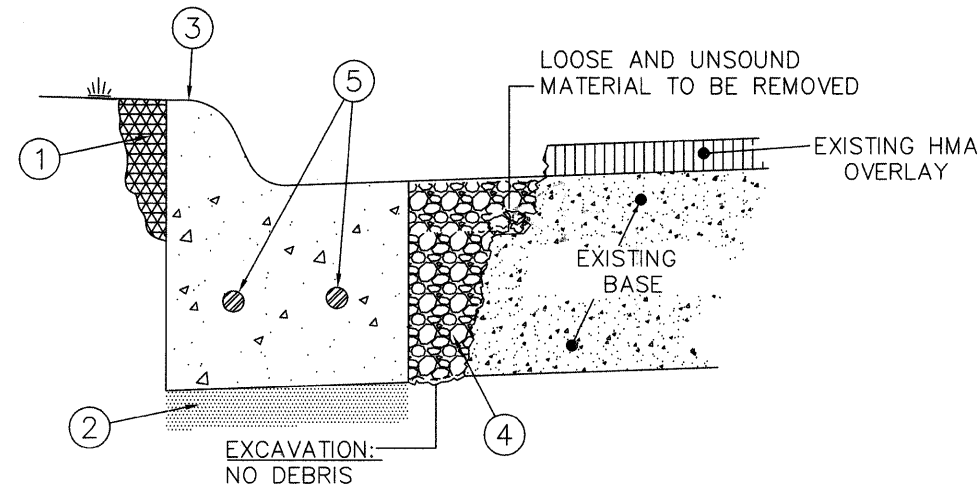
**Joseph A. Schudt & Associates**  
  
 19350 S. HARLEM AVENUE FRANKFORT, IL 60423  
 PHONE: 708-720-1000 FAX: 708-720-1065  
 ILLINOIS REGISTERED DESIGN FIRM No. 184-001172  
 CIVIL ENGINEERING LAND SURVEYING ENVIRONMENTAL LAND PLANNING GPS SERVICES

*34th Street Street Paving  
East End Ave. to Holeman Ave.*

COPYRIGHT © 2009  
JOSEPH A. SCHUDT & ASSOCIATES  
ALL RIGHTS RESERVED

FILE NAME =	USER NAME =	DESIGNED - S.M.H.	REVISED - 8-24-09	STATE OF ILLINOIS DEPARTMENT OF TRANSPORTATION	MISCELLANEOUS DETAILS	F.A.P. RTE. 3734	SECTION 09-00058-00-RS	COUNTY COOK	TOTAL SHEETS 12	SHEET NO. 10		
	PLOT SCALE =	CHECKED - S.M.H.	REVISED -			SCALE: N/A	SHEET NO. 10 OF 12 SHEETS	STA.	TO STA.	CONTRACT NO. 63284		
	PLOT DATE =	DATE - 6-24-09	REVISED -			ILLINOIS FED. AID PROJECT AREA - 9003 (394)			09-026.dwg 09-026			
Long Section Number Multiple County Names												

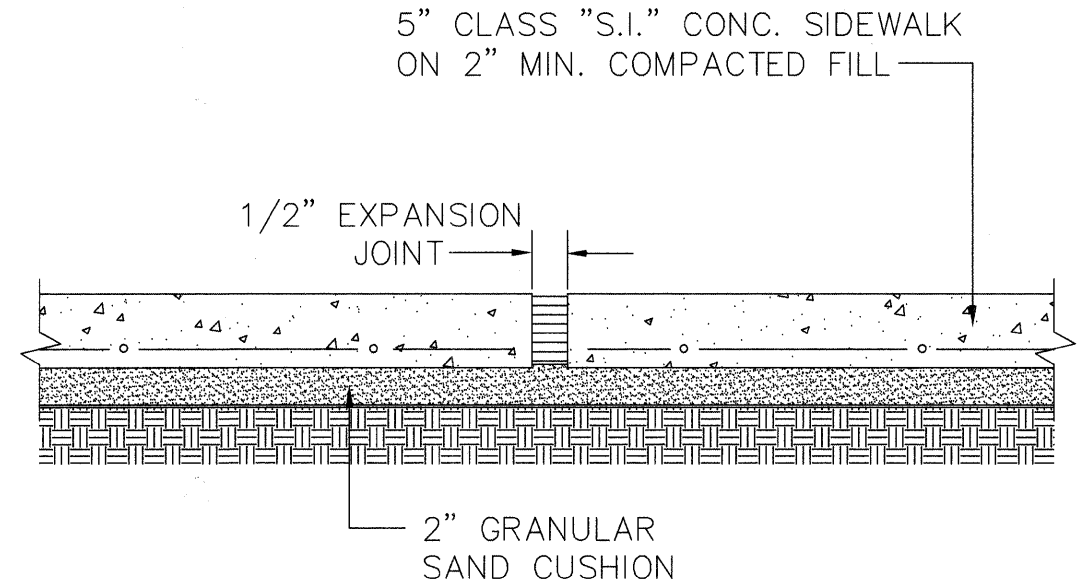
# SIDEWALK DETAIL



## Detail Concrete Curb and Gutter Removal and Replacement


No Scale

- ① BACK OF CURB RESTORATION BY TOPSOIL AND CLASS I SEED (INCIDENTAL).
- ② EXISTING AGGREGATE TO REMAIN, CONTRACTOR TO ADD AS NEEDED. 2" MIN. GRANULAR CUSHION REQUIRED.
- ③ DEPRESSED AT DRIVEWAYS, ADA SIDEWALKS AND AS DIRECTED BY ENGINEER TO MATCH PARKWAY GRADE.
- ④ EXCAVATION SPACE TO BE FILLED WITH HOT-MIX ASPHALT (INCIDENTAL).
- ⑤ TWO (2) #5 BARS REQUIRED AT ALL DRIVEWAYS.



### NOTE:

Place 3-#5 reinforcing bars  
8 ft. long at all trench crossings.  
A bar shall be placed at center of  
walk and 1 ft. on either side.

**Joseph A. Schudt & Associates**  
  
 19350 S. HARLEM AVENUE FRANKFORT, IL 60423  
 PHONE: 708-720-1000 FAX: 708-720-1065  
 ILLINOIS REGISTERED DESIGN FIRM No. 184-001172  
 CIVIL ENGINEERING LAND SURVEYING ENVIRONMENTAL LAND PLANNING GPS SERVICES

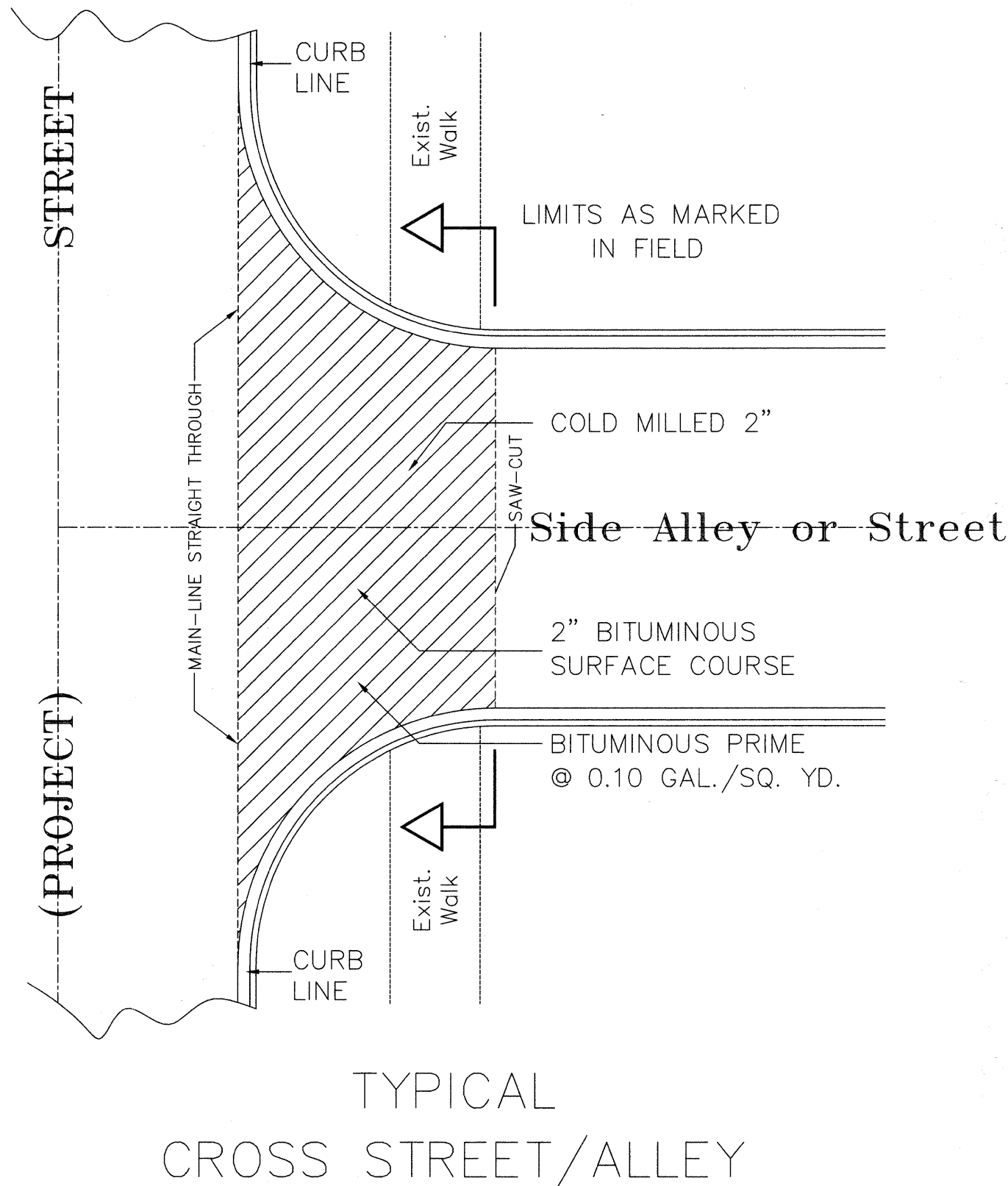
*34th Street Street Paving  
East End Ave. to Holeman Ave.*

COPYRIGHT © 2009  
JOSEPH A. SCHUDT & ASSOCIATES  
ALL RIGHTS RESERVED

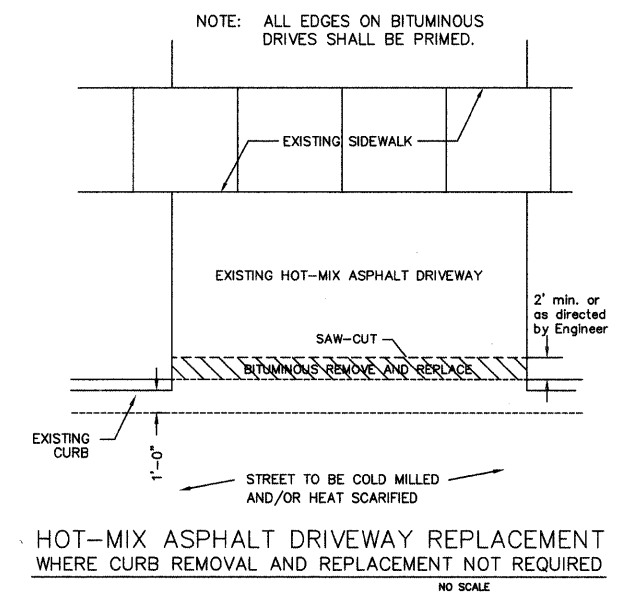
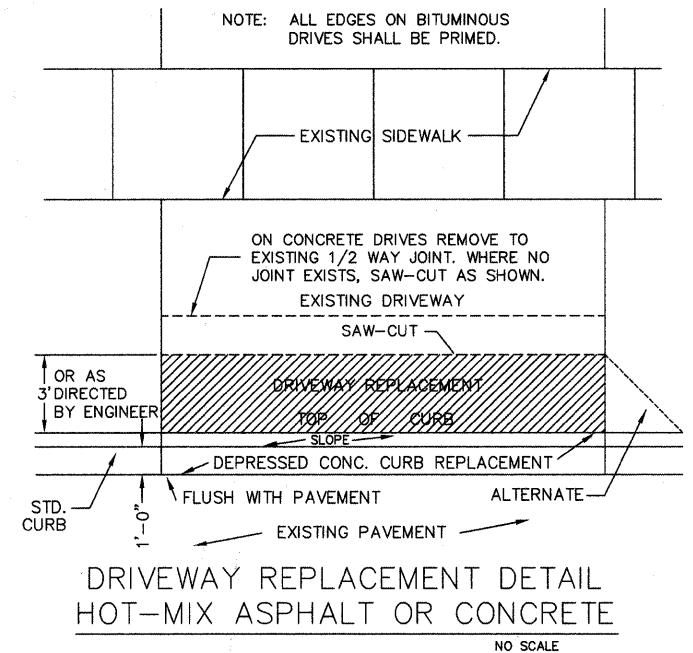
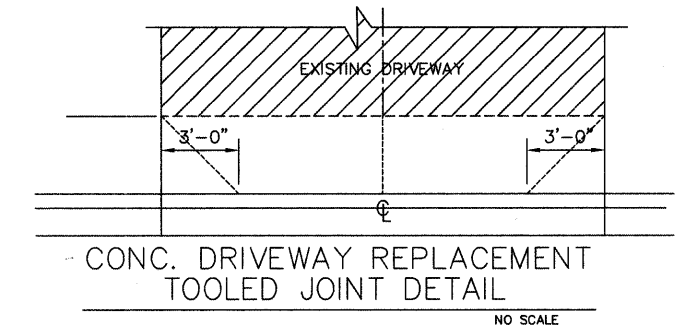
FILE NAME =	USER NAME =	DESIGNED - S.M.H.	REVISED - 8-24-09	STATE OF ILLINOIS DEPARTMENT OF TRANSPORTATION	MISCELLANEOUS DETAILS	F.A.P. RTE.	SECTION	COUNTY	TOTAL SHEETS	SHEET NO.	
	PLOT SCALE =	CHECKED - S.M.H.	REVISED -			3734	09-00058-00-RS	COOK	12	11	
	PLOT DATE =	DATE - 6-24-09	REVISED -			CONTRACT NO. 63284					
						ILLINOIS FED. AID PROJECT AREA - 9003 (394)					
SCALE: N/A						SHEET NO. 11 OF 12 SHEETS		STA.		TO STA.	

M:\2009\09-026\Drawings\Construction\Drawings\09-026.dwg, 11:02:13 AM, 11/24/09, 1:51:51 PM, COPYRIGHT, JOSEPH A. SCHUDT & ASSOCIATES, J.A.R.

K:\2009\09-026\Drawings\Construction\Drawings\09-026.dwg, 12:42:15.82 PM, COPYRIGHT, JOSEPH A. SCHUDT & ASSOCIATES - JAR



TYPICAL  
CROSS STREET/ALLEY



**Joseph A. Schudt & Associates**  
 19350 S. HARLEM AVENUE FRANKFORT, IL 60423  
 PHONE: 708-720-1000 FAX: 708-720-1065  
 ILLINOIS REGISTERED DESIGN FIRM No. 184-001172  
 CIVIL ENGINEERING LAND SURVEYING ENVIRONMENTAL LAND PLANNING GPS SERVICES

*34th Street Street Paving  
East End Ave. to Holeman Ave.*

COPYRIGHT © 2009  
JOSEPH A. SCHUDT & ASSOCIATES  
ALL RIGHTS RESERVED

FILE NAME =	USER NAME =	DESIGNED - S.M.H.	REVISED - 8-24-09	STATE OF ILLINOIS DEPARTMENT OF TRANSPORTATION	MISCELLANEOUS DETAILS	F.A.P. RTE.	SECTION	COUNTY	TOTAL SHEETS	SHEET NO.	
	PLOT SCALE =	CHECKED - S.M.H.	REVISED -			3734	09-00058-00-RS	COOK	12	12	
	PLOT DATE =	DATE - 6-24-09	REVISED -			CONTRACT NO. 63284		ILLINOIS FED. AID PROJECT AREA - 9003 (394)			
						SCALE: N/A	SHEET NO. 12 OF 12 SHEETS	STA.	TO STA.	Long Section Number Multiple County Names	