

F.A. RTE. 2543 3549	SECTION 09-00044-00-RS	COUNTY DUPAGE	TOTAL SHEETS 30	SHEET NO. 1
ILLINOIS		CONTRACT NO. 63289		

FOR INDEX OF SHEETS, SEE SHEET NO. 2

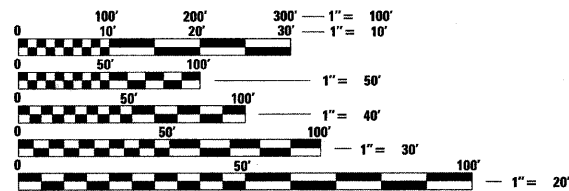
WINFIELD ROAD (FAU ROUTE 2543) - MINOR ARTERIAL URBAN
 STRUCTURAL DESIGN TRAFFIC: 8900 ADT YEAR 2024
 PV= 90% SU= 5% MU= 5%
 ROAD CLASSIFICATION: CLASS II
 TRAFFIC FACTOR: TF = 2.23
 POSTED SPEED LIMIT = 30 MPH
 NET LENGTH OF IMPROVEMENT S = 4000 FT

GARYS MILL ROAD (FAU ROUTE 3549) - COLLECTOR URBAN
 STRUCTURAL DESIGN TRAFFIC: 8500 ADT YEAR 2024
 PV= 90% SU= 5% MU= 5%
 ROAD CLASSIFICATION: CLASS II
 TRAFFIC FACTOR: TF = 2.13
 POSTED SPEED LIMIT = 30 MPH
 NET LENGTH OF IMPROVEMENT S = 1778 FT

JEWELL ROAD (LOCAL STREET)
 STRUCTURAL DESIGN TRAFFIC: 500 ADT YEAR 2024
 PV= 88% SU= 7% MU= 5%
 ROAD CLASSIFICATION: CLASS III
 TRAFFIC FACTOR: TF = 0.13
 POSTED SPEED LIMIT = 30 MPH
 NET LENGTH OF IMPROVEMENT S = 1162 FT

LIBERTY STREET (LOCAL STREET)
 STRUCTURAL DESIGN TRAFFIC: 500 ADT YEAR 2024
 PV= 88% SU= 7% MU= 5%
 ROAD CLASSIFICATION: CLASS III
 TRAFFIC FACTOR: TF = 0.13
 POSTED SPEED LIMIT = 25 MPH
 NET LENGTH OF IMPROVEMENT S = 1130 FT

REMPE-SHARPE CONSULTING ENGINEERS
 IL P.D.F. LICENSE NO. 184-000895
 324 WEST STATE STREET - GENEVA, ILLINOIS 60134
 Telephone (630) 232-0827 - Fax (630) 232-1829



FULL SIZE PLANS HAVE BEEN PREPARED USING STANDARD ENGINEERING SCALES. REDUCED SIZED PLANS WILL NOT CONFORM TO STANDARD SCALES. IN MAKING MEASUREMENTS ON REDUCED PLANS, THE ABOVE SCALES MAY BE USED.

J.U.L.I.E.
 Joint Utility Locating Information for Excavators
 CALL 811

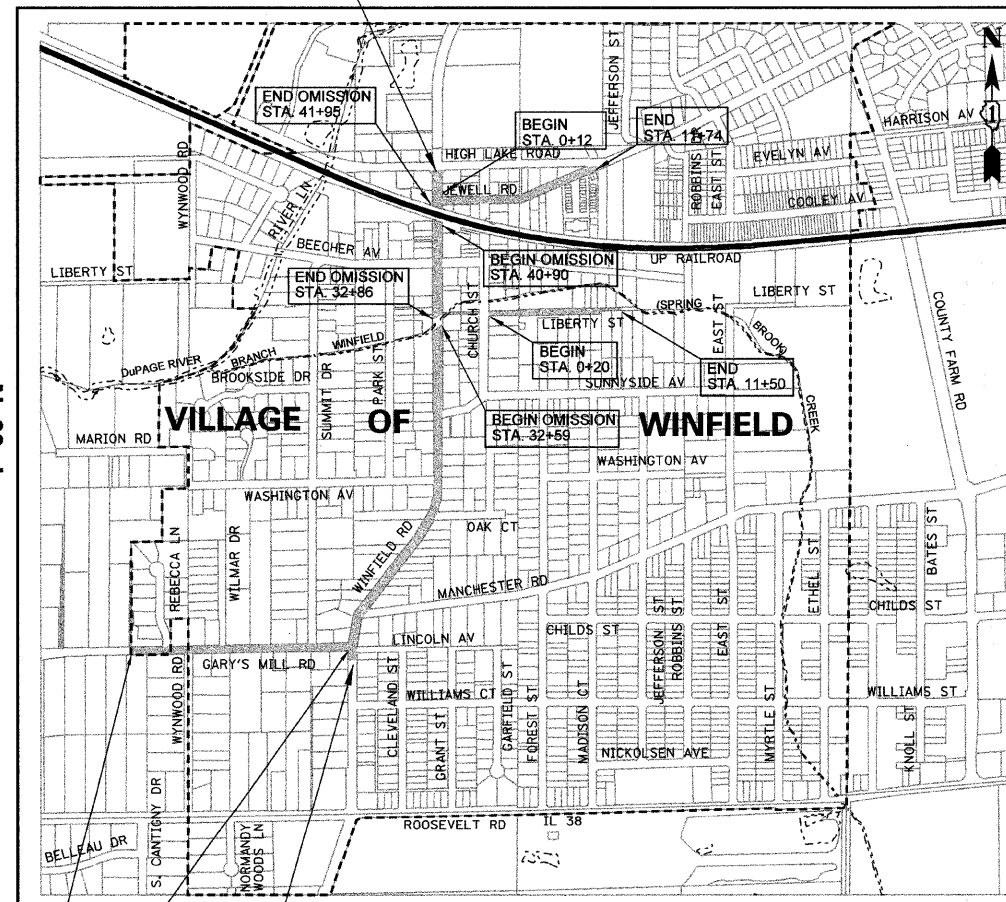
 Know what's below. Call before you dig.

PROJECT ENGINEER - DOUGLAS W RANNEY II
PROJECT MANAGER - DANIEL A WATSON
CONTRACT NO. 63289

BEGIN IMPROVEMENT
GARYS MILL RD. STA. 17+10

END IMPROVEMENT
GARYS MILL RD. STA. 34+88

END IMPROVEMENT
WINFIELD RD. STA. 44+90



T 39 N

R 9 E

WINFIELD TOWNSHIP

3RD P.M.

LOCATION MAP
NO SCALE

GROSS LENGTH OF IMPROVEMENT: 8070 LF = 1.528 MILES
 NET LENGTH OF IMPROVEMENT: 8043 LF = 1.523 MILES
 NET LENGTH OF OMISSION: 132 LF = 0.025 MILE

STATE OF ILLINOIS
 DEPARTMENT OF TRANSPORTATION
 DIVISION OF HIGHWAYS
**PLANS FOR PROPOSED
 FEDERAL AID PROJECT**
WINFIELD ROAD (FAU ROUTE 2543)&GARYS MILL ROAD (FAU ROUTE 3549)
LIBERTY STREET AND JEWELL ROAD
ROADWAY RESURFACING AND RECONSTRUCTION
 SECTION 09-00044-00-RS
 PROJECT # ARA-9003(424)
 DUPAGE COUNTY
 C-91-785-09



STATE OF ILLINOIS
 DEPARTMENT OF TRANSPORTATION
 DIVISION OF HIGHWAYS

APPROVED Aug 10 20 09
Daniel B...
 VILLAGE OF WINFIELD

PASSED August 31 20 09
Chris...
 DISTRICT ONE ENGINEER OF LOCAL ROADS & STREETS

RELEASING FOR BID BASED ON LIMITED REVIEW SEPTEMBER 1, 20 09
Diana M. O'Keefe
 DEPUTY DIRECTOR OF HIGHWAYS, REGIONAL ENGINEER

Douglas W. Ranney
 DOUGLAS W. RANNEY
 ILLINOIS REGISTERED PROFESSIONAL ENGINEER
 NO. 062-061276 EXPIRES 11-30-09

**PRINTED BY THE AUTHORITY
 OF THE STATE OF ILLINOIS**

IDOT FIELD ENGINEER: MARILIN SOLOMON, P.E. (847) 705-9407