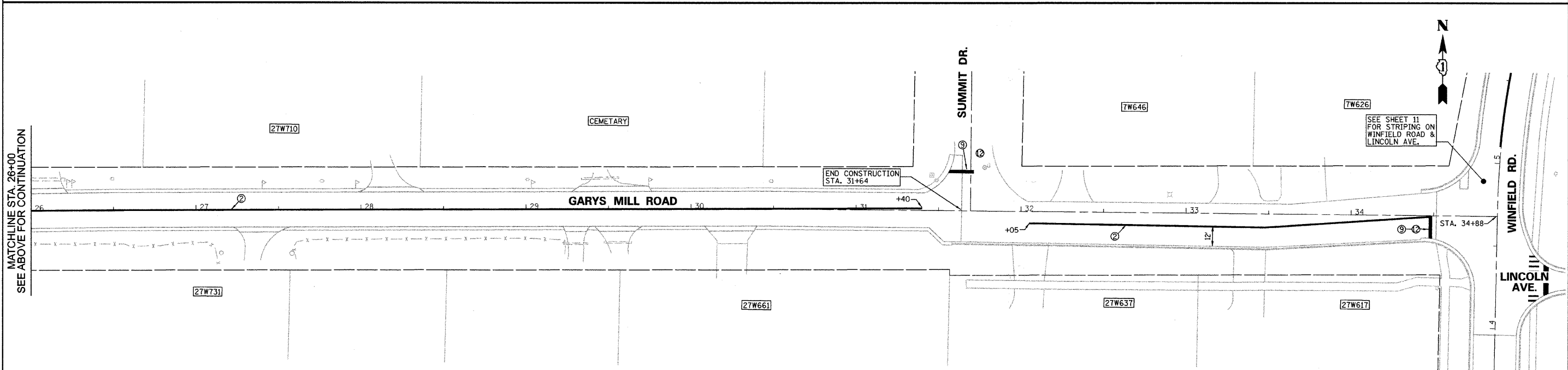


MATCHLINE STA. 26+00
SEE BELOW FOR CONTINUATION



MATCHLINE STA. 26+00
SEE ABOVE FOR CONTINUATION

PAVEMENT MARKINGS LEGEND

- | | |
|---|--|
| ① THERMOPLASTIC PAVEMENT MARKING, LETTERS AND SYMBOLS | ⑦ THERMOPLASTIC PAVEMENT MARKING - LINE 12" WHITE |
| ② THERMOPLASTIC PAVEMENT MARKING - LINE 4" DOUBLE YELLOW @ 11" C-C | ⑧ THERMOPLASTIC PAVEMENT MARKING - LINE 12" YELLOW |
| ③ THERMOPLASTIC PAVEMENT MARKING - LINE 4" SOLID YELLOW @ 6" C-C FROM YELLOW DASHED | ⑨ THERMOPLASTIC PAVEMENT MARKING - LINE 24" WHITE |
| ④ PAINT PAVEMENT MARKING - LINE 4" WHITE | ⑩ RECESSED REFLECTIVE PAVEMENT MARKER, ONE WAY @ 40' C-C |
| ⑤ THERMOPLASTIC PAVEMENT MARKING - LINE 6" WHITE | ⑪ RECESSED REFLECTIVE PAVEMENT MARKER, TWO WAY @ 40' C-C |
| ⑥ THERMOPLASTIC PAVEMENT MARKING - LINE 8" WHITE | ⑫ THERMOPLASTIC PAVEMENT MARKING REMOVAL |

FILE NAME m:\dgn\wf\542.2009streets\sheets\wf542	USER NAME = _USER_	DESIGNED E.J.	REVISED -
GARYSMILL-STRIPED.dgn		CHECKED D.A.W.	REVISED -
PLOT SCALE = 38.00' / IN.		DRAWN D.B.E.	REVISED -
PLOT DATE = 8/12/2009		CHECKED D.W.R.	REVISED -

**STATE OF ILLINOIS
DEPARTMENT OF TRANSPORTATION**

GARYS MILL ROAD STRIPING PLAN

SCALE: 1"=30' SHEET NO. 14 OF 30 SHEETS STA. 17+10 TO STA. 34+88

F.A. RTE. 3549	SECTION 09-00044-00-RS	COUNTY DUPAGE	TOTAL SHEETS 30	SHEET NO. 14
CONTRACT NO. 63289			ILLINOIS FED. AID PROJECT	