

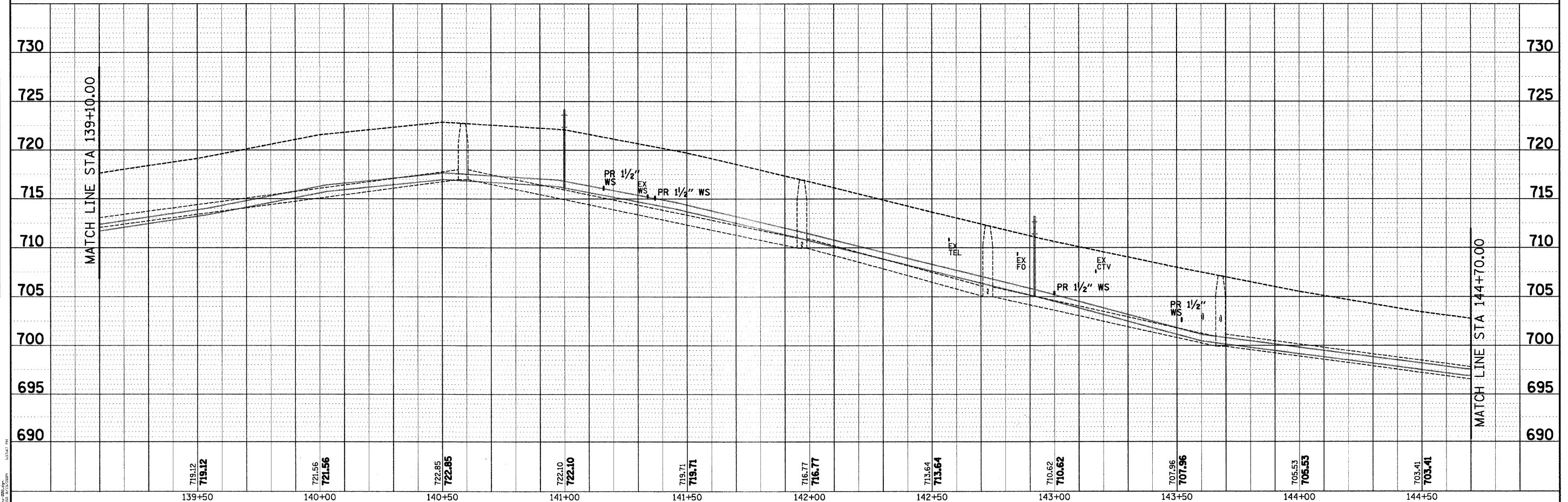
ALL TRENCHES UNDER OR WITHIN FIVE (5) FEET OF ALL CURB AND GUTTER, PAVED SURFACES, AND SIDEWALKS SHALL BE BACKFILLED WITH SELECT GRANULAR MATERIAL CONFORMING TO THE GRADATION OF CA7 AND SHALL BE INCLUDED IN THE COST OF TRENCH BACKFILL.

SEE SCHEDULE OF QUANTITIES FOR PATCHING WIDTH TABLE

58 EX CB
STA 143+46.34, 15.1' RT
RIM=709.43
INV=705.93 N

102 180 LF EX 12" RCP @ 4.28%

- ▲ DRAINAGE STRUCTURES
 - ◆ INLET PROTECTION
 - DRAINAGE PIPES
 - PROPOSED STORM SEWER
- ALL PROPOSED STORM SEWER PIPES SHALL BE INSTALLED WITH RUBBER GASKETS UNLESS OTHERWISE NOTED.



PLAN	REVISION	DATE
NOTE BOOK	ALIGNED	
NO.	CHECKED	
	DATE	
	FILE NAME	

PROFILE	REVISION	DATE
NOTE BOOK	GRADES	
NO.	CHECKED	
	DATE	
	STRUCTURE	
	NOTATIONS	
	CPFD	

<p>SEC Group, Inc. Engineering Surveying Planning Landscape Architecture McHenry • Yorkville • New Lenox • Chicago www.secgroupinc.com</p>	USER NAME = s.johnson PLOT SCALE = 1"=20' PLOT DATE = 8/13/2009	DESIGNED - DRAWN - SVJ CHECKED - GT DATE - 8/13/09	REVISED - REVISED - REVISED - REVISED -	VILLAGE OF HINSDALE DUPAGE COUNTY, ILLINOIS GARFIELD STREET, FIRST STREET, & PARK AVENUE	GARFIELD STREET DRAINAGE PLAN AND PROFILE	F.A.V. RTE. 267g SECTION NO. 08-00086-00-RS COUNTY DUPAGE TOTAL SHEETS 65 SHEET NO. 38 CONTRACT NO. 63297
	SCALE: 1"=20' SHEET NO. 38 OF 65 SHEETS STA. 139+10.00 TO STA. 144+70.00				FED. ROAD DIST. NO. ILLINOIS FED. AID PROJECT	