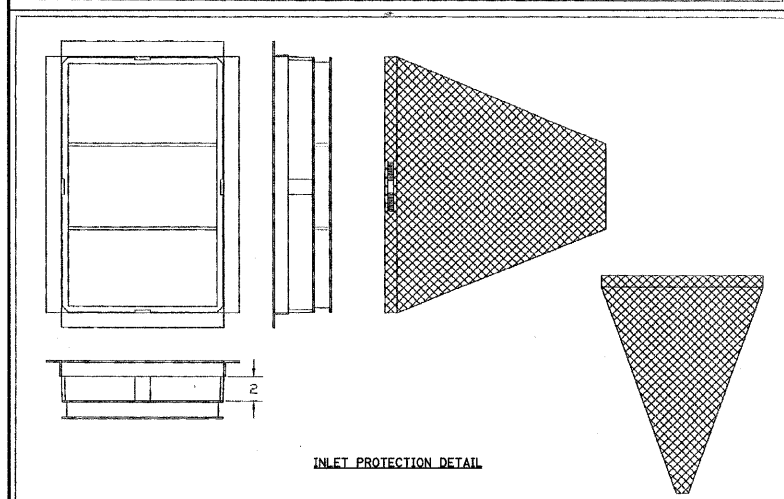


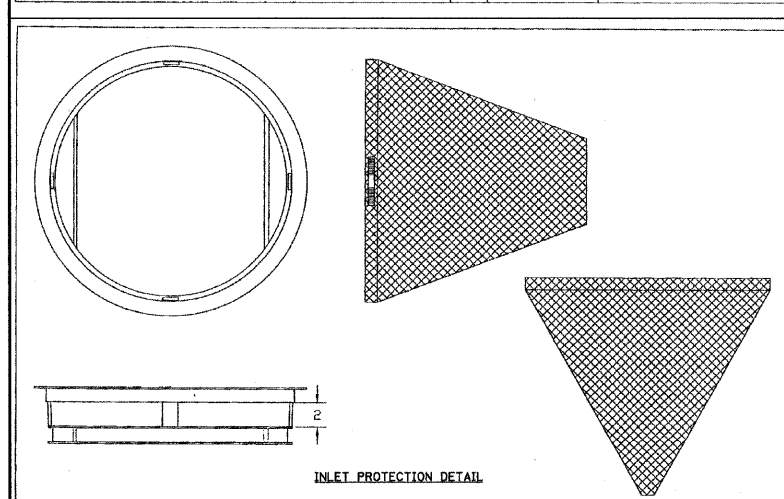
DATE	REVISIONS
01-11-02	Original
05-07-04	Remove Back Rail

GENERAL NOTES:
FRAME: Top Flange fabricated from 1/2"x1/2"x1/2" angle. Base rim fabricated from 1/2"x1/2" channel. Handles and suspension brackets fabricated from 1/2"x1/2" flat stock. All steel conforming to ASTM-A36.
SEDIMENT BAG: Bag fabricated from 4 oz./sqyd. non-woven polypropylene geotextile reinforced with polyester mesh. Bag secured to base rim with a stainless steel band and lock.



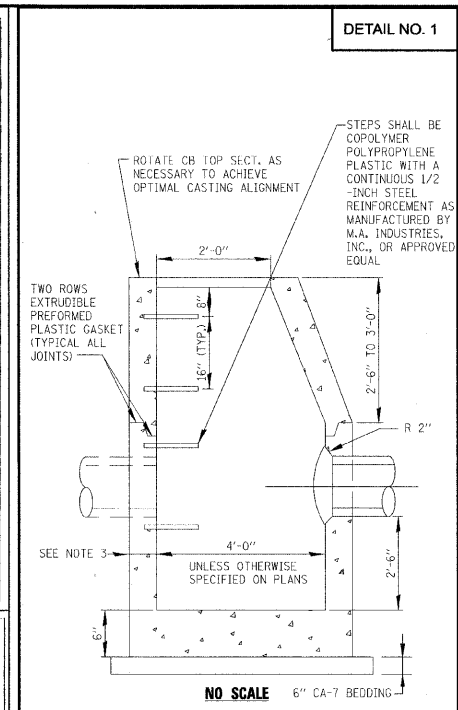
DATE	REVISIONS
01-22-02	Original

GENERAL NOTES:
FRAME: Top Flange fabricated from 1/2"x1/2"x1/2" angle. Base rim fabricated from 1/2"x1/2" channel. Handles and suspension brackets fabricated from 1/2"x1/2" flat stock. All steel conforming to ASTM-A36.
SEDIMENT BAG: Bag fabricated from 4 oz./sqyd. non-woven polypropylene geotextile reinforced with polyester mesh. Bag secured to base rim with a stainless steel band and lock.



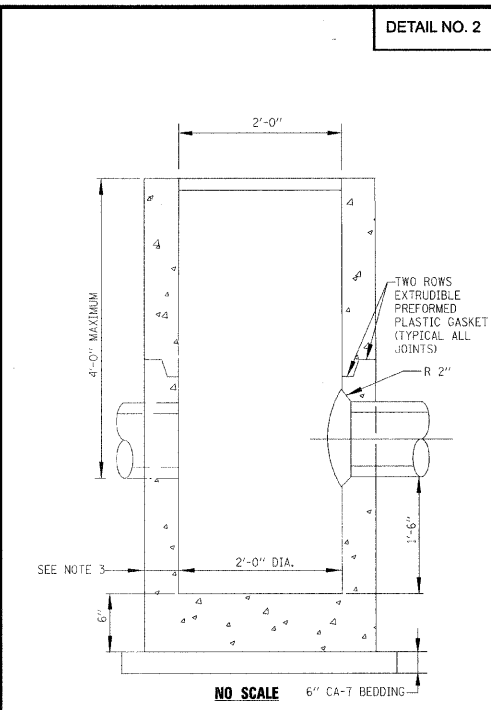
DATE	REVISIONS
01-11-02	Original

GENERAL NOTES:
FRAME: Top Flange fabricated from 1/2"x1/2"x1/2" angle. Base rim fabricated from 1/2"x1/2" channel. Handles and suspension brackets fabricated from 1/2"x1/2" flat stock. All steel conforming to ASTM-A36.
SEDIMENT BAG: Bag fabricated from 4 oz./sqyd. non-woven polypropylene geotextile reinforced with polyester mesh. Bag secured to base rim with a stainless steel band and lock.



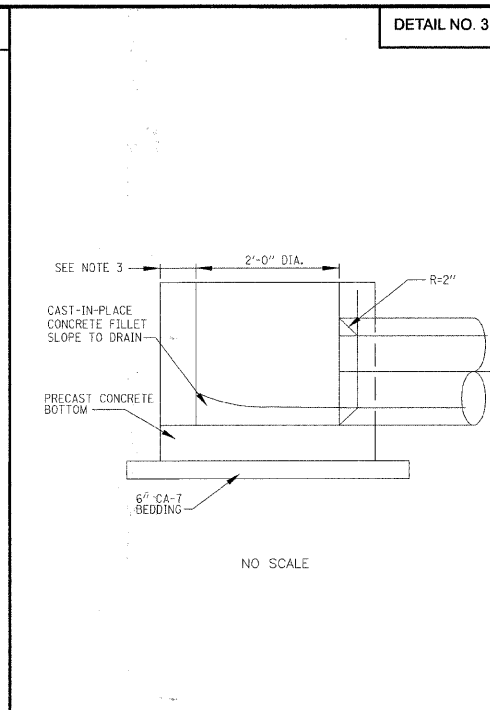
NOTES:
1. SEE CASTING INSTALLATION AND ADJUSTMENT DETAIL FOR CASTING REQUIREMENTS.
2. STRUCTURE SHALL COMPLY WITH ASTM C478.
3. WALL THICKNESS SHALL BE IN ACCORDANCE WITH IDOT HIGHWAY STANDARD 602001

REV: _____
DATE: APRIL 2008
FILE: STORMWDR-T-A



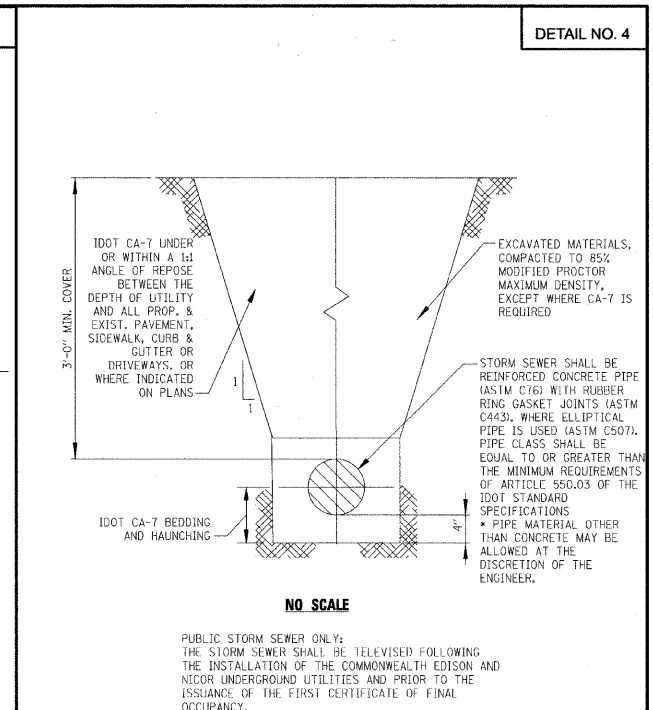
NOTES:
1. SEE CASTING INSTALLATION AND ADJUSTMENT DETAIL FOR CASTING REQUIREMENTS.
2. STRUCTURE SHALL COMPLY WITH ASTM C478.
3. WALL THICKNESS SHALL BE IN ACCORDANCE WITH IDOT HIGHWAY STANDARD 602001

REV: _____
DATE: APRIL 2008
FILE: STORMWDR-T-C



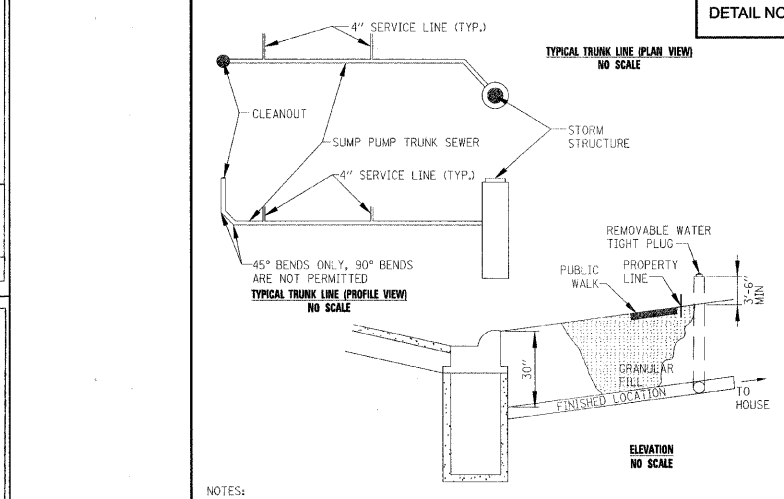
NOTES:
1. SEE CASTING INSTALLATION AND ADJUSTMENT DETAIL FOR CASTING REQUIREMENTS.
2. ANY ADJUSTMENT OF 2" OR LESS SHALL USE PREFORMED RUBBER ADJUSTING RINGS, WHICH ARE 2" OR LESS IN THICKNESS.
3. WALL THICKNESS SHALL BE IN ACCORDANCE WITH IDOT HIGHWAY STANDARD 602001

REV: _____
DATE: APRIL 2008
FILE: STORMWDR-T-C



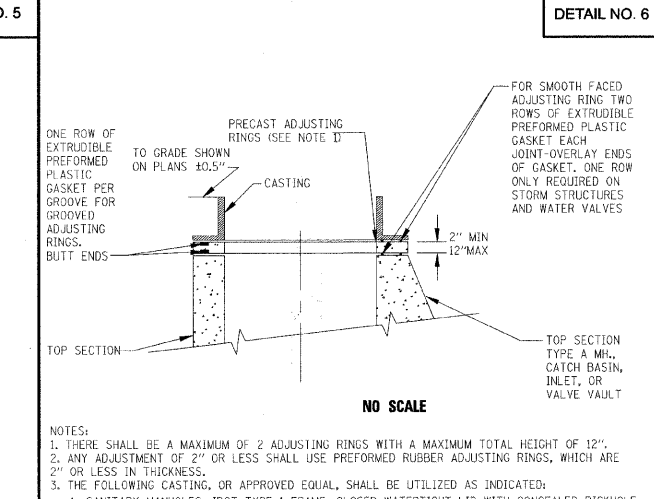
NOTES:
PUBLIC STORM SEWER ONLY:
THE STORM SEWER SHALL BE TELEVIEWED FOLLOWING THE INSTALLATION OF THE COMMONWEALTH EDISON AND NICOR UNDERGROUND UTILITIES AND PRIOR TO THE ISSUANCE OF THE FIRST CERTIFICATE OF FINAL OCCUPANCY.
NOTE: TELEVIEWING NOT REQUIRED ON PRIVATE STORM SEWER.

REV: _____
DATE: APRIL 2008
FILE: STORMWDR-T-S



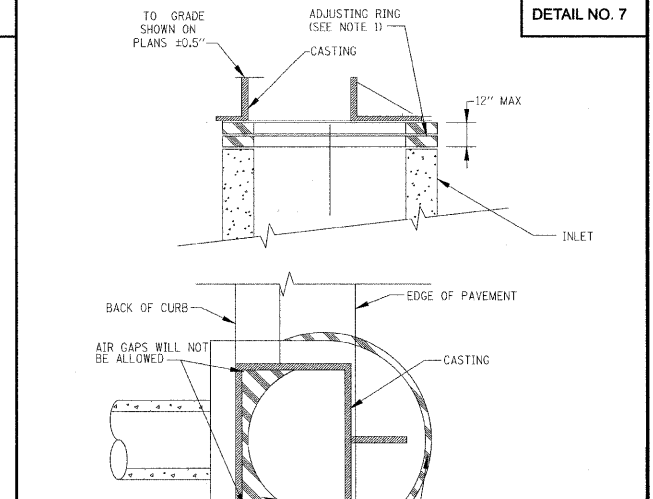
NOTES:
1. SUMP PUMP CONNECTION LINES SHALL BE POLYVINYL CHLORIDE (PVC) SDR 35 CONFORMING TO ASTM D-3034, SIZE AS INDICATED ON THE PLANS.
2. TRUNK LINES SHALL BE INSTALLED A MINIMUM OF THIRTY (30) INCHES BELOW THE TOP OF CURB AND FOLLOW THE CURB LINE FOR GRADE, AND SHALL BE LOCATED 2 FEET BEHIND THE FRONT PROPERTY LINE.
3. TO GAUGE UNDERGROUND FEEDER TRACER WIRE SHALL BE INSTALLED IMMEDIATELY ABOVE THE TRUNK LINES AND SHALL TERMINATE AT THE CLEANOUTS OR STUBS. TRACER WIRE SHALL BE STRAPPED TO ALL STUBS AND CLEANOUTS AND SHALL EXTEND CONTINUOUSLY ALONG ALL PIPES, STUBS, AND CLEANOUTS. ADEQUATE WIRE SHALL BE LEFT IN ALL STRUCTURES TO ALLOW IT TO BE RAISED ABOVE THE FRAME. TRACER WIRE SHALL BE LOOPED BACK TO THE SERVICE STUB AND SHALL BE EXTENDED UP THROUGH THE CLEANOUT TO SURFACE GRADE. SPLICES IN TRACER WIRE SHALL USE A NO. 8 SPLIT BOLT SEALED WITH SELF-VULCANIZING TAPE.
4. UNDERGROUND CONTRACTOR SHALL ROTATE ELBOWS TO INSTALL SERVICE STUBS AS SHOWN IN TEMPORARY LOCATION.
5. HOUSE CONTRACTOR SHALL ROTATE ELBOWS TO INSTALL SERVICES AS SHOWN IN FINISHED LOCATION.
6. ALL CONNECTIONS TO INLETS, CATCH BASINS, OR MANHOLES FOR SERVICE STUBS OF SUMP PUMP MAINLINES SHALL BE CORED AND NOT SAWCUT.
7. PRIOR TO FINAL ACCEPTANCE OF THE SUMP PUMP COLLECTION SYSTEM, THE ENTIRE SYSTEM SHALL BE TELEVIEWED. A COPY OF THE VIDEO TAPE SHALL BE DELIVERED TO THE PUBLIC WORKS DEPT. AND ANY OBSTRUCTIONS SHALL BE REPAIRED.

REV: _____
DATE: APRIL 2008
FILE: STORMWDR-T-S



NOTES:
1. THERE SHALL BE A MAXIMUM OF 2 ADJUSTING RINGS WITH A MAXIMUM TOTAL HEIGHT OF 12".
2. ANY ADJUSTMENT OF 2" OR LESS SHALL USE PREFORMED RUBBER ADJUSTING RINGS, WHICH ARE 2" OR LESS IN THICKNESS.
3. THE FOLLOWING CASTING, OR APPROVED EQUAL, SHALL BE UTILIZED AS INDICATED:
A. SANITARY MANHOLES: IDOT TYPE 1 FRAME, CLOSED WATERTIGHT LID WITH CONCEALED PICKHOLE, O-RING GASKETS, AND "HINSDALE" AND "SANITARY" CAST IN LID.
B. WATER VALVE VAULTS: IDOT TYPE 1 FRAME, CLOSED WATERTIGHT LID WITH CONCEALED PICKHOLE, O-RING GASKETS, AND "HINSDALE" AND "WATER" CAST IN LID.
C. STORM MANHOLES: IDOT TYPE 1 FRAME, CLOSED LID WITH CONCEALED PICKHOLE, AND "HINSDALE" AND "STORM" CAST IN LID, FOR LIDS INDICATED AS "CLOSED" ON PLANS. FOR LIDS INDICATED AS "OPEN" ON PLANS, USE THE SAME CASTING, BUT WITH AN OPEN FLAT GRATE. THE "DRAINS TO CREEK" LOGO SHALL BE CAST INTO THE LID.
D. DRAINAGE STRUCTURES IN OTHER AREAS WITH UNPAVED SURFACES: IDOT TYPE 1 FRAME, CLOSED LID WITH CONCEALED PICKHOLE AND "HINSDALE" AND "STORM" CAST IN LID FOR LIDS INDICATED AS "CLOSED ON PLANS. FOR LIDS INDICATED AS "OPEN ON PLANS, USE THE SAME CASTING, BUT WITH AN OPEN FLAT GRATE. THE "DRAINS TO CREEK" LOGO SHALL BE CAST INTO THE LID.
4. NO FILTER FABRIC ALLOWED UNDER FRAMES OR GRATES. ALL STRUCTURES, EXCLUDING CURB STRUCTURES, SHALL HAVE INLET FILTERS INSTALLED. ALL INLET PROTECTION SHOULD BE IN ACCORDANCE WITH THE APPROVED STORMWATER POLLUTION PREVENTION PLAN.
5. "BEHIVE" TYPE GRATES SHALL NOT BE USED.
6. IN PRIVATE STORM SEWER APPLICATIONS, "HINSDALE" LABEL SHALL BE OMITTED FROM THE LID.

REV: _____
DATE: APRIL 2008
FILE: STORMWDR-T-CAS/ADJ



NOTES:
1. THE MAXIMUM NUMBER OF ADJUSTING RINGS SHALL BE TWO. THE MAXIMUM HEIGHT OF ADJUSTMENT SHALL BE 12". ONE ROW OF EXTRUDIBLE PREFORMED PLASTIC GASKET SHALL BE USED ON ALL CONCRETE ADJUSTING RINGS.
2. ANY ADJUSTMENT OF 2" OR LESS SHALL USE PREFORMED RUBBER ADJUSTING RINGS, WHICH ARE 2" OR LESS IN THICKNESS.
3. IF THE CASTING MUST BE INSTALLED ON A SLOPE, PREFORMED RUBBER TAPERED RINGS MUST BE USED.
4. THE FOLLOWING CASTING, OR APPROVED EQUAL, SHALL BE UTILIZED AS INDICATED:
A. DRAINAGE STRUCTURES IN MOUNTABLE CURB AND GUTTER: EAST JORDAN IRON WORKS # 7171 WITH TYPE M1 GRATE, OR APPROVED EQUAL. THE "DRAINS TO CREEK" LOGO SHALL BE CAST INTO THE GRATE.
B. DRAINAGE STRUCTURES IN BARRIER CURB AND GUTTER: IDOT TYPE 11 FRAME AND GRATE. THE "DRAINS TO CREEK" LOGO SHALL BE CAST INTO THE GRATE OR HOOD.
5. EJW #7171 CASTINGS CAN OVERLAP STRUCTURE EDGES A MAXIMUM OF 2.5 INCHES.
6. IDOT TYPE 11 CASTINGS CAN OVERLAP STRUCTURE EDGES A MAXIMUM OF 2.0 INCHES.

REV: _____
DATE: APRIL 2008
FILE: STORMWDR-T-CORB



USER NAME = s.johnson	DESIGNED -	REVISED -
PLOT SCALE = NONE	DRAWN - SVJ	REVISED -
PLOT DATE = 8/13/2009	CHECKED - GT	REVISED -
	DATE = 8/13/09	REVISED -

VILLAGE OF HINSDALE
DUPAGE COUNTY, ILLINOIS
GARFIELD STREET, FIRST STREET, & PARK AVENUE

STANDARD STORM SEWER DETAILS

SCALE: NONE SHEET NO. 55 OF 65 SHEETS STA. TO STA.

F.A.U. RTE. 267B	SECTION NO. 08-00086-00-RS	COUNTY TOTAL SHEETS 65 55
FED. ROAD DIST. NO. ILLINOIS	FED. AID PROJECT	CONTRACT NO. 632971