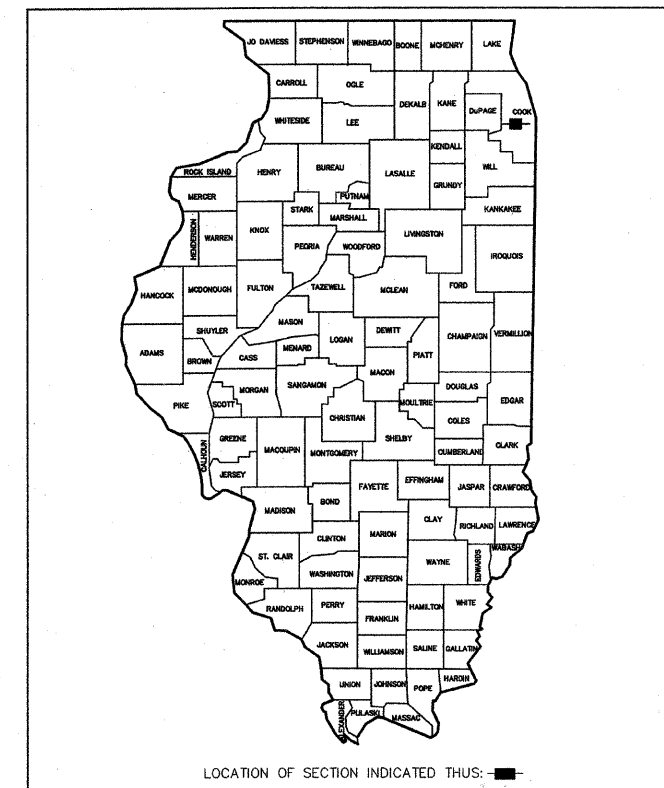


FAU RTE	SECTION	COUNTY	TOTAL SHEETS	SHEET NO.
FAU 2792	08-00058-00-RS	COOK	15	1
FED. ROAD DIST. NO.	ILLINOIS PROJECT	ARA-9003(067)		

CONTRACT NO. 63302

STATE OF ILLINOIS DEPARTMENT OF TRANSPORTATION DIVISION OF HIGHWAYS PLANS FOR PROPOSED FEDERAL AID HIGHWAY

FAU RTE. 2792 (LAWNDALE AVENUE)
FROM 47TH STREET (FAU 1488) TO OGDEN AVENUE (FAP 311)
LAPP RESURFACING
SECTION 08-00058-00-RS
PROJECT ARA-9003(067)
VILLAGE OF LYONS
COOK COUNTY
C-91-424-08



- ### INDEX OF SHEETS
- COVER SHEET, INDEX OF SHEETS, LOCATION MAP, INDEX OF STATE STANDARDS
 - GENERAL NOTES, JOINT DETAILS, AND SUMMARY OF QUANTITIES
 - TYPICAL CROSS SECTIONS, HOT-MIX ASPHALT MIXTURE REQUIREMENTS
 - PLAN: LAWNDALE AVENUE (RESURFACING) - 47TH ST. TO STA. 21+00
 - PLAN: LAWNDALE AVENUE (RESURFACING) - STA. 21+00 TO OGDEN AVE.
 - PLAN: LAWNDALE AVENUE (PAVEMENT MARKINGS) - 47TH ST. TO STA. 21+00
 - PLAN: LAWNDALE AVENUE (PAVEMENT MARKINGS) - STA. 21+00 TO OGDEN AVE.
 - DISTRICT ONE TYPICAL PAVEMENT MARKINGS
 - PAVEMENT MARKING LETTERS AND SYMBOLS FOR TRAFFIC STAGING
 - TRAFFIC CONTROL AND PROTECTION FOR SIDEROADS, INTERSECTIONS, AND DRIVEWAYS
 - SIGNING FOR FLAGGING OPERATION AT WORK ZONE OPENINGS
 - CURB OR CURB AND GUTTER REMOVAL AND REPLACEMENT
 - FRAMES AND LIDS ADJUSTMENTS WITH MILLING
 - BUTT JOINT AND HOT-MIX ASPHALT TAPER DETAILS
 - PAVEMENT PATCHING FOR HMA SURFACED PAVEMENT

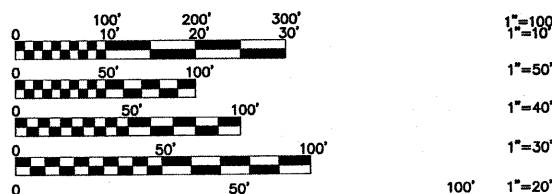
STATE STANDARDS

- 000001-05 STANDARD SYMBOLS, ABBREVIATIONS, AND PATTERNS
424001-05 CURB RAMPS FOR SIDEWALK
- 604001-03 FRAME & LIDS, TYPE 1
606001-04 CONCRETE CURB AND COMBINATION CONCRETE CURB & GUTTER
- 701606-06 URBAN LANE CLOSURE MULTI LANE, 2W + MOUNTABLE MEDIAN
701701-06 URBAN LANE CLOSURE, MULTILANE INTERSECTION
701801-04 LANE CLOSURE MULTILANE 1W OR 2W CROSSWALK OR SIDEWALK CLOSURE
- 701901-01 TRAFFIC CONTROL DEVICES
780001-02 TYPICAL PAVEMENT MARKINGS
886001-01 DETECTOR LOOP INSTALLATIONS
886006-01 TYPICAL LAYOUTS FOR DETECTION LOOPS

TRAFFIC DATA


ADT:
LAWNDALE AVENUE 4,000 (2009)

POSTED SPEED	DESIGN SPEED
35 MPH (EXISTING)	35 MPH (EXISTING)
35 MPH (PROPOSED)	35 MPH (PROPOSED)



FULL SIZE PLANS HAVE BEEN PREPARED USING STANDARD ENGINEERING SCALES. REDUCED SIZED PLANS WILL NOT CONFORM TO STANDARD SCALES. IN MAKING MEASUREMENTS ON REDUCED PLANS, THE ABOVE SCALES MAY BE USED.

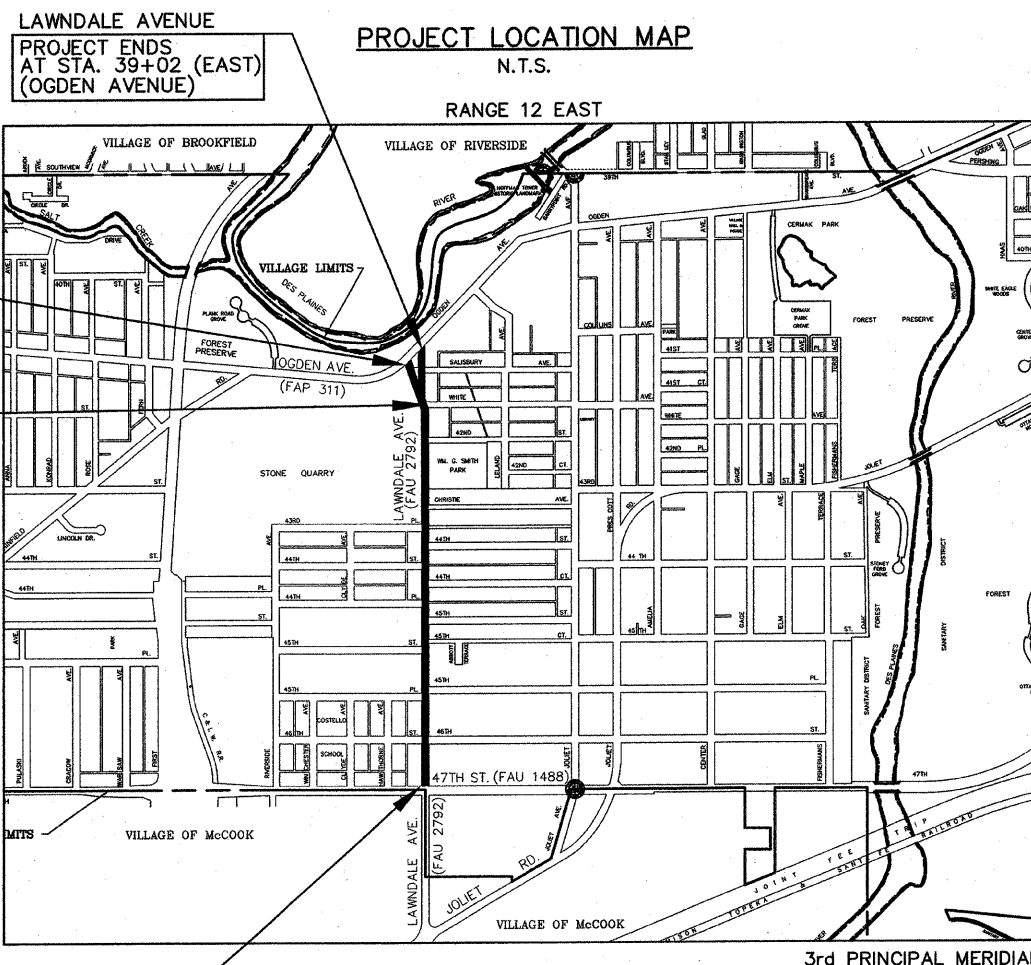
JULIE
JOINT UTILITY LOCATION INFORMATION FOR EXCAVATION
CALL 811



Frank Novotny & Associates, Inc.
Civil Engineers
Municipal Consultants
825 Midway Drive • Willowbrook, IL • 60527 • Telephone: (630) 887-8640 • Fax: (630) 887-0132
ILLINOIS PROFESSIONAL DESIGN FIRM NO. 184-000828

REVISIONS			
NO.	BY	DATE	DESCRIPTION
1	JLC	8/12/09	PER I.D.O.T. REVIEW

CONTRACT NO. 63302



LAWNDALE AVENUE PROJECT BEGINS AT STA. 0+18 (47th STREET)

— DENOTES LOCATION OF IMPROVEMENT IN LYONS TOWNSHIP

LENGTH OF PROJECT
GROSS LENGTH OF PROJECT 3,884 FEET (0.7356 MILES)
NET LENGTH OF PROJECT 3,884 FEET (0.7356 MILES)

STATE OF ILLINOIS
DEPARTMENT OF TRANSPORTATION
DIVISION OF HIGHWAYS


APPROVED _____ 2009

VILLAGE PRESIDENT _____
ROY WITHEROW, VILLAGE MANAGER

PASSED _____
AUGUST 31, 2009
CHIEF DISTRICT #1 ENGINEER OF LOCAL ROADS & STREETS

RELEASING FOR BID BASED ON LIMITED REVIEW _____
SEPTEMBER 1, 2009
DIANE M. O'NEILL, DEPUTY DIRECTOR OF HIGHWAYS, REGION #1 ENGINEER

JAMES L. CAINKAR, P.E.
II, P.E. NO. 62-36190
EXPIRES 11-30-2009
08/12/09
DATE



SEAL

PRINTED BY THE AUTHORITY
OF THE STATE OF ILLINOIS