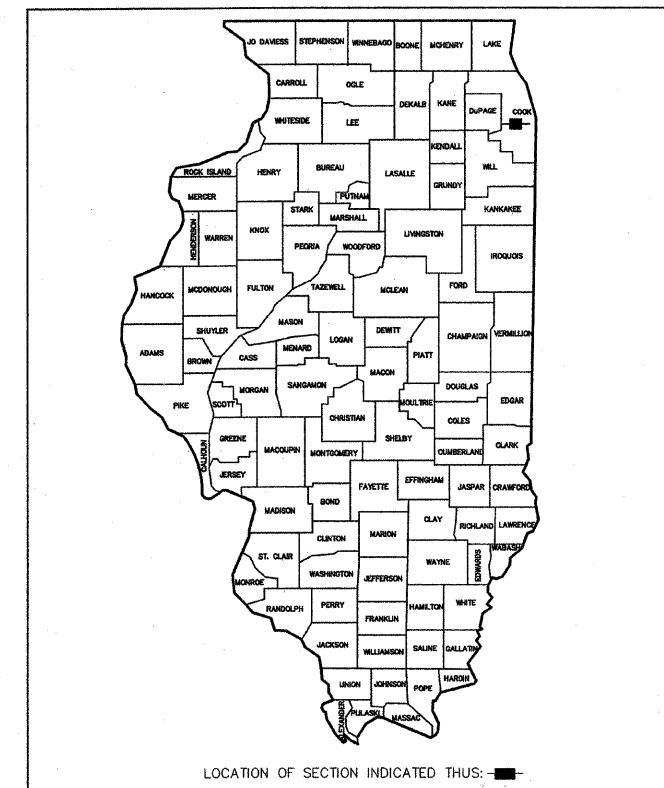


FAU RTE	SECTION	COUNTY	TOTAL SHEETS	SHEET NO.
FAU 2792	08-00058-00-RS	COOK	15	1
FED. ROAD DIST. NO.	ILLINOIS PROJECT	ARA-9003(067)		

CONTRACT NO. 63302

STATE OF ILLINOIS DEPARTMENT OF TRANSPORTATION DIVISION OF HIGHWAYS PLANS FOR PROPOSED FEDERAL AID HIGHWAY

FAU RTE. 2792 (LAWNDALE AVENUE)
FROM 47TH STREET (FAU 1488) TO OGDEN AVENUE (FAP 311)
LAPP RESURFACING
SECTION 08-00058-00-RS
PROJECT ARA-9003(067)
VILLAGE OF LYONS
COOK COUNTY
C-91-424-08



- ### INDEX OF SHEETS
- 1.) COVER SHEET, INDEX OF SHEETS, LOCATION MAP, INDEX OF STATE STANDARDS
 - 2.) GENERAL NOTES, JOINT DETAILS, AND SUMMARY OF QUANTITIES
 - 3.) TYPICAL CROSS SECTIONS, HOT-MIX ASPHALT MIXTURE REQUIREMENTS
 - 4.) PLAN: LAWNDALE AVENUE (RESURFACING) - 47TH ST. TO STA. 21+00
 - 5.) PLAN: LAWNDALE AVENUE (RESURFACING) - STA. 21+00 TO OGDEN AVE.
 - 6.) PLAN: LAWNDALE AVENUE (PAVEMENT MARKINGS) - 47TH ST. TO STA. 21+00
 - 7.) PLAN: LAWNDALE AVENUE (PAVEMENT MARKINGS) - STA. 21+00 TO OGDEN AVE.
 - 8.) DISTRICT ONE TYPICAL PAVEMENT MARKINGS
 - 9.) PAVEMENT MARKING LETTERS AND SYMBOLS FOR TRAFFIC STAGING
 - 10.) TRAFFIC CONTROL AND PROTECTION FOR SIDEROADS, INTERSECTIONS, AND DRIVEWAYS
 - 11.) SIGNING FOR FLAGGING OPERATION AT WORK ZONE OPENINGS
 - 12.) CURB OR CURB AND GUTTER REMOVAL AND REPLACEMENT
 - 13.) FRAMES AND LIDS ADJUSTMENTS WITH MILLING
 - 14.) BUTT JOINT AND HOT-MIX ASPHALT TAPER DETAILS
 - 15.) PAVEMENT PATCHING FOR HMA SURFACED PAVEMENT

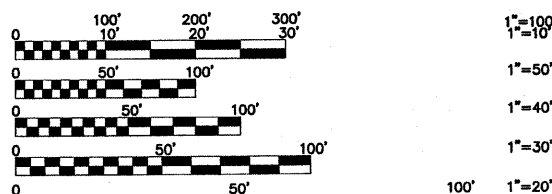
STATE STANDARDS

- 000001-05 STANDARD SYMBOLS, ABBREVIATIONS, AND PATTERNS
424001-05 CURB RAMPS FOR SIDEWALK
- 604001-03 FRAME & LIDS, TYPE 1
606001-04 CONCRETE CURB AND COMBINATION CONCRETE CURB & GUTTER
- 701606-06 URBAN LANE CLOSURE MULTI LANE, 2W + MOUNTABLE MEDIAN
701701-06 URBAN LANE CLOSURE, MULTILANE INTERSECTION
701801-04 LANE CLOSURE MULTILANE 1W OR 2W CROSSWALK OR SIDEWALK CLOSURE
- 701901-01 TRAFFIC CONTROL DEVICES
780001-02 TYPICAL PAVEMENT MARKINGS
886001-01 DETECTOR LOOP INSTALLATIONS
886006-01 TYPICAL LAYOUTS FOR DETECTION LOOPS

TRAFFIC DATA

ADT:
LAWNDALE AVENUE 4,000 (2009)

POSTED SPEED	DESIGN SPEED
35 MPH (EXISTING)	35 MPH (EXISTING)
35 MPH (PROPOSED)	35 MPH (PROPOSED)



FULL SIZE PLANS HAVE BEEN PREPARED USING STANDARD ENGINEERING SCALES. REDUCED SIZED PLANS WILL NOT CONFORM TO STANDARD SCALES. IN MAKING MEASUREMENTS ON REDUCED PLANS, THE ABOVE SCALES MAY BE USED.

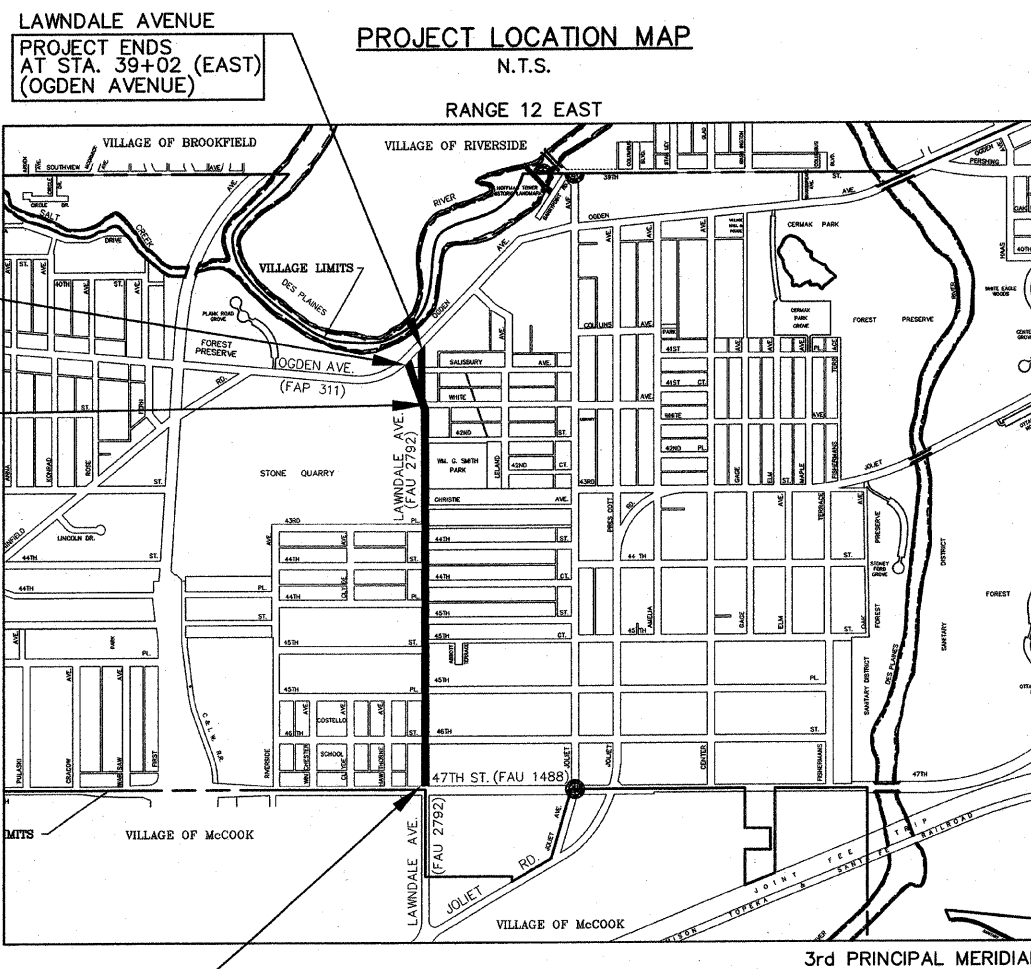
JULIE
JOINT UTILITY LOCATION INFORMATION FOR EXCAVATION
CALL 811

Know what's below.
Call before you dig.

Frank Novotny & Associates, Inc.
Civil Engineers
Municipal Consultants
825 Midway Drive • Willowbrook, IL • 60527 • Telephone: (630) 887-8640 • Fax: (630) 887-0132
ILLINOIS PROFESSIONAL DESIGN FIRM NO. 184-000828

REVISIONS			
NO.	BY	DATE	DESCRIPTION
1	JLC	8/12/09	PER I.D.O.T. REVIEW

CONTRACT NO. 63302



LAWNDALE AVENUE PROJECT BEGINS AT STA. 0+18 (47th STREET)

— DENOTES LOCATION OF IMPROVEMENT IN LYONS TOWNSHIP

LENGTH OF PROJECT

GROSS LENGTH OF PROJECT 3,884 FEET (0.7356 MILES)
NET LENGTH OF PROJECT 3,884 FEET (0.7356 MILES)

STATE OF ILLINOIS
DEPARTMENT OF TRANSPORTATION
DIVISION OF HIGHWAYS

APPROVED _____ 2009

VILLAGE PRESIDENT _____
ROY WITHEROW, VILLAGE MANAGER

PASSED _____
AUGUST 31, 2009
CHIEF DISTRICT #1 ENGINEER OF LOCAL ROADS & STREETS

RELEASING FOR BID BASED ON LIMITED REVIEW _____
SEPTEMBER 1, 2009
DIANE M. O'NEILL, DEPUTY DIRECTOR OF HIGHWAYS, REGION #1 ENGINEER

JAMES L. CAINKAR, P.E.
REGISTERED PROFESSIONAL ENGINEER OF ILLINOIS
EXPIRES 11-30-2009
DATE: 08/12/09

**PRINTED BY THE AUTHORITY
OF THE STATE OF ILLINOIS**

ASSOCIATE FIELD ENGINEER: MARILYN SOLOMON (847)705-4407

**GENERAL CONSTRUCTION NOTES
PAVING AND STORM SEWERS**

SPECIFICATIONS
THE LATEST EDITIONS OF THE "STANDARD SPECIFICATIONS FOR ROAD AND BRIDGE CONSTRUCTION", THE "SUPPLEMENTAL SPECIFICATIONS AND RECURRING SPECIAL PROVISIONS", PREPARED BY THE ILLINOIS DEPARTMENT OF TRANSPORTATION AND THE "MANUAL OF UNIFORM TRAFFIC CONTROL DEVICES" SHALL GOVERN ALL WORK ASSOCIATED WITH THIS PROJECT. THE "STANDARD SPECIFICATIONS FOR WATER AND SEWER MAIN CONSTRUCTION IN ILLINOIS" MAY GOVERN OTHER WORK ON THIS PROJECT AS INDICATED BY REFERENCE.

CARE IN EXCAVATION
CARE SHALL BE EXERCISED BY THE CONTRACTOR IN CARRYING OUT EARTH AND/OR TRENCHING OPERATIONS SO THAT LOCAL UTILITY SERVICES, WATER VALVES, MANHOLES, CATCH BASINS, INLETS, BUFFALO BOXES, AND OTHER STRUCTURES ARE NOT DAMAGED OR REMOVED. ANY DAMAGE DONE BY THE CONTRACTOR, WHETHER THE STRUCTURE OR SERVICE IS VISIBLE AT THE GROUND SURFACE OR NOT, SHALL BE REPAIRED OR REPLACED BY THE CONTRACTOR AS REQUIRED BY THE ENGINEER AT THE CONTRACTOR'S EXPENSE, AND NO ADDITIONAL COMPENSATION WILL BE ALLOWED.

NOTIFICATION OF PUBLIC UTILITIES
PRIOR TO STARTING CONSTRUCTION, THE CONTRACTOR SHALL NOTIFY THE OFFICIALS OF THE PUBLIC WORKS DEPARTMENT OF THE LOCAL MUNICIPALITY, J.U.L.I.E. AT 1-800-892-0123 OR 811, AND OTHER PUBLIC AND PRIVATE UTILITIES SO THAT ARRANGEMENTS CAN BE MADE TO LOCATE THEIR VARIOUS FACILITIES WITHIN THE LIMITS OF CONSTRUCTION UNDER THIS CONTRACT, AS WELL AS TO PROVIDE ADEQUATE PROTECTION AND INSPECTION THEREOF. IT SHALL BE THIS CONTRACTOR'S RESPONSIBILITY TO DETERMINE THE ACTUAL LOCATION OF ALL SUCH FACILITIES IN THE FIELD.

TRAFFIC CONTROL DEVICES
BARRICADES AND WARNING SIGNS SHALL BE PROVIDED IN ACCORDANCE WITH ARTICLE 107.14 OF THE "STANDARD SPECIFICATIONS FOR ROAD AND BRIDGE CONSTRUCTION". ADEQUATE LIGHTING SHALL BE MAINTAINED FROM DUSK TO DAWN AT ALL LOCATIONS WHERE CONSTRUCTION OPERATIONS WARRANT, OR AS DESIGNATED BY THE ENGINEER.

PROTECTION OF SIGNS AND PROPERTY
ALL TRAFFIC SIGNS, STREET SIGNS, ETC., THAT INTERFERE WITH THE CONSTRUCTION OPERATIONS SHALL BE REMOVED AND PLACED AT NEW LOCATIONS AS DESIGNATED BY THE ENGINEER. THIS WORK SHALL BE CONSIDERED INCLUDED IN THE COST OF THE CONTRACT, AND NO ADDITIONAL COMPENSATION WILL BE ALLOWED. IN ADDITION, ALL MAIL BOXES THAT INTERFERE WITH CONSTRUCTION SHALL BE SIMILARLY RELOCATED AT NO ADDITIONAL COST IN ACCORDANCE WITH ARTICLES 107.20 AND 107.21 OF THE "STANDARD SPECIFICATIONS FOR ROAD AND BRIDGE CONSTRUCTION".

SUPERINTENDENCE
SPECIAL ATTENTION IS DRAWN TO ARTICLE 105.06 OF THE "STANDARD SPECIFICATIONS FOR ROAD AND BRIDGE CONSTRUCTION" WHICH REQUIRES THE CONTRACTOR TO HAVE A COMPETENT SUPERINTENDENT ON THE PROJECT SITE AT ALL TIMES, IRRESPECTIVE OF THE AMOUNT OF WORK SUBLET. THE SUPERINTENDENT SHALL BE CAPABLE OF READING AND UNDERSTANDING THE PLANS AND SPECIFICATIONS, SHALL HAVE FULL AUTHORITY TO EXECUTE ORDERS TO EXPEDITE THE PROJECT AND SHALL BE RESPONSIBLE FOR SCHEDULING AND HAVING CONTROL OF ALL THE WORK AS THE AGENT OF THE GENERAL CONTRACTOR. FAILURE TO COMPLY WITH THIS PROVISION WILL RESULT IN A SUSPENSION OF WORK AS PROVIDED IN ARTICLE 108.07.

SAWING EXISTING IMPROVEMENTS
ALL PERMANENT TYPE PAVEMENTS OR OTHER PERMANENT IMPROVEMENTS WHICH ABUT THE PROPOSED IMPROVEMENT AND MUST BE REMOVED, SHALL BE SAWED AS DIRECTED PRIOR TO REMOVAL. ALL ITEMS SO REMOVED SHALL BE REPLACED WITH SIMILAR CONSTRUCTION MATERIALS TO THEIR ORIGINAL CONDITION OR BETTER. PAYMENT FOR SAWING SHALL BE INCLUDED IN THE COST FOR THE REMOVAL OF EACH ITEM, AND REPLACEMENT WILL BE PAID FOR UNDER THE RESPECTIVE ITEMS IN THE CONTRACT UNLESS OTHERWISE INDICATED. SAW CUTTING FOR PATCHES WILL BE INCLUDED IN THE COST OF THE PATCHING ITEM.

CONSTRUCTION LAYOUT STAKES
THE CONTRACTOR SHALL PROVIDE THE ENGINEER WITH WOODEN STAKES OR OTHER LAYOUT MATERIALS FOR LAYOUT OF THE LINES AND GRADES OF THE PROJECT. FAILURE TO PROVIDE STAKES IN A TIMELY MANNER WILL RESULT IN A DELAY IN STAKEOUT WHICH WILL BE APPLICABLE AGAINST THE TIME LIMIT FOR COMPLETION SHOWN IN THE PROJECT SPECIFICATIONS. LINE AND GRADE WILL BE ESTABLISHED BY THE ENGINEER AT REGULAR INTERVALS ON PERMANENTLY PAVED SURFACES, SIDEWALKS OR STAKES AT THE ENGINEER'S OPTION, ALL WITHIN THE PUBLIC RIGHT-OF-WAY AND SHALL BE TRANSFERRED BY THE CONTRACTOR TO THE ACTUAL LINE OF CONSTRUCTION.

PROJECT SAFETY
BARRICADES: THE CONTRACTOR SHALL PROVIDE AND INSTALL TWO (2) WEIGHTED SAND BAGS ON EACH TYPE I OR TYPE II BARRICADE USED ONE (1) WEIGHTED SAND BAG ACROSS EACH BOTTOM RAIL.
WHEN MILLED PAVEMENT IS OPEN TO TRAFFIC THE MAXIMUM GRADE DIFFERENTIAL BETWEEN PASSES OF THE MILLING MACHINE SHALL NOT EXCEED 1-1/2 INCHES WHERE THE SPEED LIMIT IS 45 MPH OR LESS AND 1 INCH WHERE THE SPEED LIMIT IS GREATER THAN 45 MPH. WITH WRITTEN APPROVAL FROM THE ENGINEER, A MAXIMUM GRADE DIFFERENTIAL OF 3 INCHES MAY BE ALLOWED IF THE EDGE OF THE MILLING IS SLOPED A MINIMUM 1:3 (V:H).

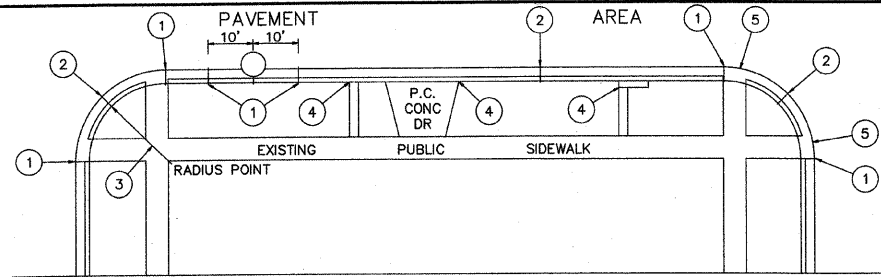
BUTT JOINTS WILL BE INSTALLED AT THE ENDS OF ALL RESURFACING (WHERE RESURFACING MEETS EXISTING PAVEMENT), IN ACCORDANCE WITH THE "BUTT JOINT AND HOT-MIX ASPHALT TAPER DETAILS" SHEET INCLUDED IN THE PLANS, UNLESS OTHERWISE SPECIFIED.

THE CONTRACTOR SHALL COMPLY WITH AND OBSERVE THE RULES AND REGULATIONS OF O.S.H.A. AND APPROPRIATE AUTHORITIES REGARDING SAFETY PROVISIONS. THE CONTRACTOR, ENGINEER, AND OWNER SHALL EACH BE RESPONSIBLE FOR THEIR OWN RESPECTIVE AGENTS AND EMPLOYEES.

THE ENGINEER AND OWNER ARE NOT RESPONSIBLE FOR THE CONSTRUCTION MEANS, METHODS, TECHNIQUES, SEQUENCES OR PROCEDURES, TIME OF PERFORMANCE, PROGRAMS, OR FOR ANY SAFETY PRECAUTIONS USED BY THE CONTRACTOR. THE CONTRACTOR IS SOLELY RESPONSIBLE FOR EXECUTION OF HIS WORK IN ACCORDANCE WITH THE DOCUMENTS AND SPECIFICATIONS.

SPECIAL PROJECT NOTES

ALL ITEMS ASSOCIATED WITH CURB AND GUTTER, DRIVEWAYS AND PATCHING WILL NOT EXCEED THE QUANTITIES LISTED IN THE SUMMARY OF QUANTITIES.
DRIVEWAY REPAIR BETWEEN THE CURB AND THE PROPERTY LINE SHALL BE COMPLETED PER THE VILLAGE ORDINANCE. THE INSTALLATION IS DETAILED IN THESE PLANS AND IN THE SPECIAL PROVISIONS.
ALL PATCHING WILL BE MARKED OUT AND CONSTRUCTED AFTER MILLING. A PROOF ROLL WILL BE REQUIRED.



- EXPANSION JOINTS AT TANGENT POINTS AND 150 FOOT INTERVALS, CONSISTING OF ONE INCH PREMOLDED JOINT FILLER MATERIAL WITH #8 DOWEL BARS, 18" IN LENGTH, GREASED. PROVIDE EXPANSION CAP ON ONE END. ALSO CONSTRUCT THIS JOINT TEN FEET EACH SIDE OF PROPOSED UNDERGROUND STRUCTURE.
- CONTRACTION JOINTS AT TWENTY-FIVE FOOT INTERVALS AND AT THE CENTER OF RETURNS.
- ALL RADII SHALL BE 25 FEET TO THE BACK OF CURB UNLESS OTHERWISE DIRECTED BY THE ENGINEER.
- LONGITUDINAL EXPANSION JOINT CONSISTING OF ONE INCH PREMOLDED JOINT FILLER.
- DEPRESS CURB AT LOCATIONS WHERE PUBLIC WALKS INTERSECT CURB LINE AT STREET INTERSECTIONS, ALLEYS, AND OTHER LOCATIONS AS DIRECTED, FOR THE CONSTRUCTION OF RAMPED SIDEWALKS FOR ACCESS BY THE HANDICAPPED.

JOINT DETAILS

SUMMARY OF QUANTITIES

Item No	Description	Unit	Quantity	Construction Code
21101615	TOPSOIL FURNISH AND PLACE, 4"	SQ YD	177	1000
25200100	SODDING	SQ YD	177	
40600200	BITUMINOUS MATERIALS (PRIME COAT)	TON	9	
40600300	AGGREGATE (PRIME COAT)	TON	21	
40600625	LEVELING BINDER (MACHINE METHOD), N50	TON	1,147	
40600895	CONSTRUCTING TEST STRIP	EACH	1	
40600982	HOT-MIX ASPHALT SURFACE REMOVAL - BUTT JOINT	SQ YD	248	
40603310	HOT-MIX ASPHALT SURFACE COURSE, MIX "C", N50	TON	2,007	
SP 40800050	INCIDENTAL HOT-MIX ASPHALT SURFACING	TON	30	
42300300	PORTLAND CEMENT CONCRETE DRIVEWAY PAVEMENT, 7 INCH	SQ YD	20	
42400200	PORTLAND CEMENT CONCRETE SIDEWALK, 5 INCH	SQ FT	1,760	
42400800	DETECTABLE WARNINGS	SQ FT	396	
44000180	HOT-MIX ASPHALT SURFACE REMOVAL, 2 3/4"	SQ YD	20,483	
44000200	DRIVEWAY PAVEMENT REMOVAL	SQ YD	180	
44000600	SIDEWALK REMOVAL	SQ FT	2,025	
SP 44001700	COMBINATION CURB AND GUTTER REMOVAL AND REPLACEMENT	FOOT	1,084	
44201753	CLASS D PATCHES, TYPE II, 9 INCH	SQ YD	62	
44201757	CLASS D PATCHES, TYPE III, 9 INCH	SQ YD	56	
44201759	CLASS D PATCHES, TYPE IV, 9 INCH	SQ YD	107	
SP 44300300	AREA REFLECTIVE CRACK CONTROL TREATMENT, SYSTEM A	SQ YD	20,731	
60250200	CATCH BASINS TO BE ADJUSTED	EACH	62	
60260100	INLETS TO BE ADJUSTED	EACH	2	
60265700	VALVE VAULTS TO BE ADJUSTED	EACH	2	
60300310	FRAMES AND LIDS TO BE ADJUSTED (SPECIAL)	EACH	66	
67100100	MOBILIZATION	LSUM	1	
70101700	TRAFFIC CONTROL AND PROTECTION	LSUM	1	
70106800	CHANGEABLE MESSAGE SIGN	CAL MO	4	
70300100	SHORT-TERM PAVEMENT MARKING	FOOT	290	
70301000	WORK ZONE PAVEMENT MARKING REMOVAL	SQ FT	32	
* 78000100	THERMOPLASTIC PAVEMENT MARKING - LETTERS AND SYMBOLS	SQ FT	37	
* 78000200	THERMOPLASTIC PAVEMENT MARKING - LINE 4"	FOOT	6,741	
* 78000400	THERMOPLASTIC PAVEMENT MARKING - LINE 6"	FOOT	1,786	
* 78000600	THERMOPLASTIC PAVEMENT MARKING - LINE 12"	FOOT	231	
* 78000650	THERMOPLASTIC PAVEMENT MARKING - LINE 24"	FOOT	320	
* 88600600	DETECTOR LOOP REPLACEMENT	FOOT	102	

* SPECIALTY ITEM

Frank Novotny & Associates, Inc.
Civil Engineers/ Municipal Consultants
825 Midway Drive • Willowbrook, IL • 60527 • Telephone: (630) 887-8640 • Fax: (630) 887-0132
Illinois Professional Design Firm No. 184-000928

PROJECT
VILLAGE OF LYONS, ILLINOIS
LAWDALE AVENUE LAPP RESURFACING
SECTION 08-00058-00-RS

REVISIONS			
NO.	BY	DATE	DESCRIPTION
1	J.C.	8/12/09	PER I.D.O.T. REVIEW

GENERAL NOTES
JOINT DETAILS
SUMMARY OF QUANTITIES

PROJECT NO. 06189	SCALE NONE	SHEET 2 OF 15 SHEETS
DRAWN/DESIGNED JFP-JEP/JLC	DATE JUNE, 2009	
CHECKED/APPROVED JLC	FIELD BOOK NO. FILE	

FAU RTE	SECTION	COUNTY	TOTAL SHEETS	SHEET NO.
FAU 2792	08-00058-00-RS	COOK	15	3
F.H.W.A. REG.	ILLINOIS PROJECT	ARA-9003(067)		

CONTRACT NO. 63302

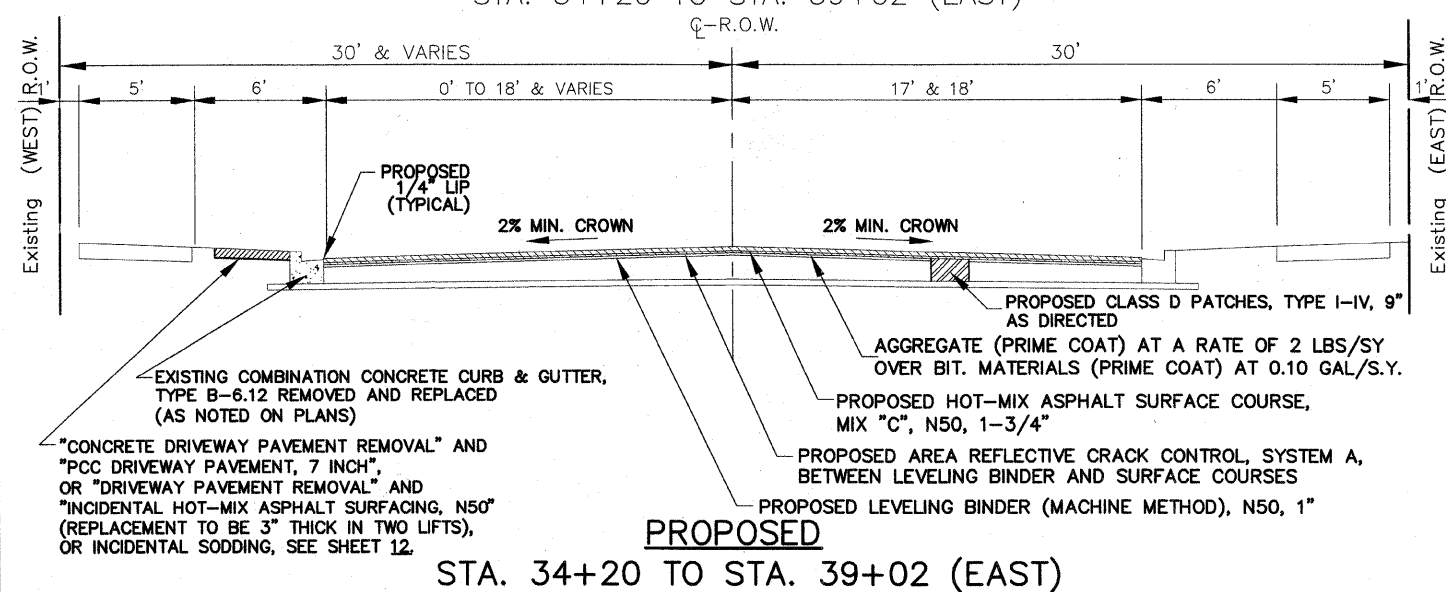
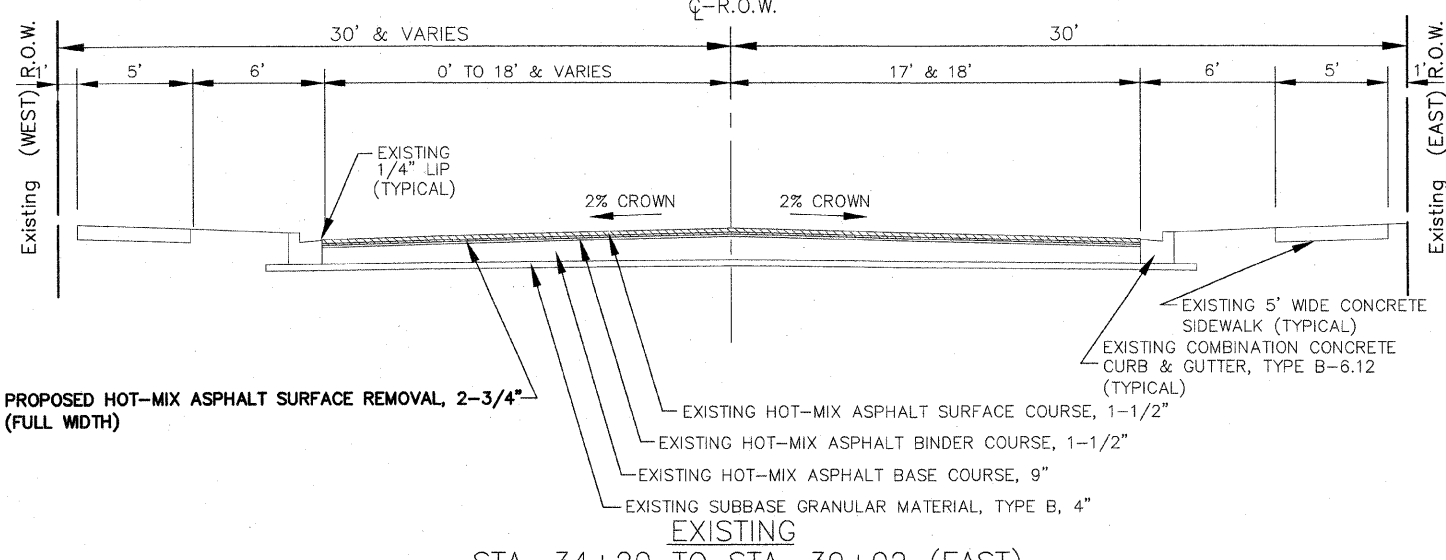
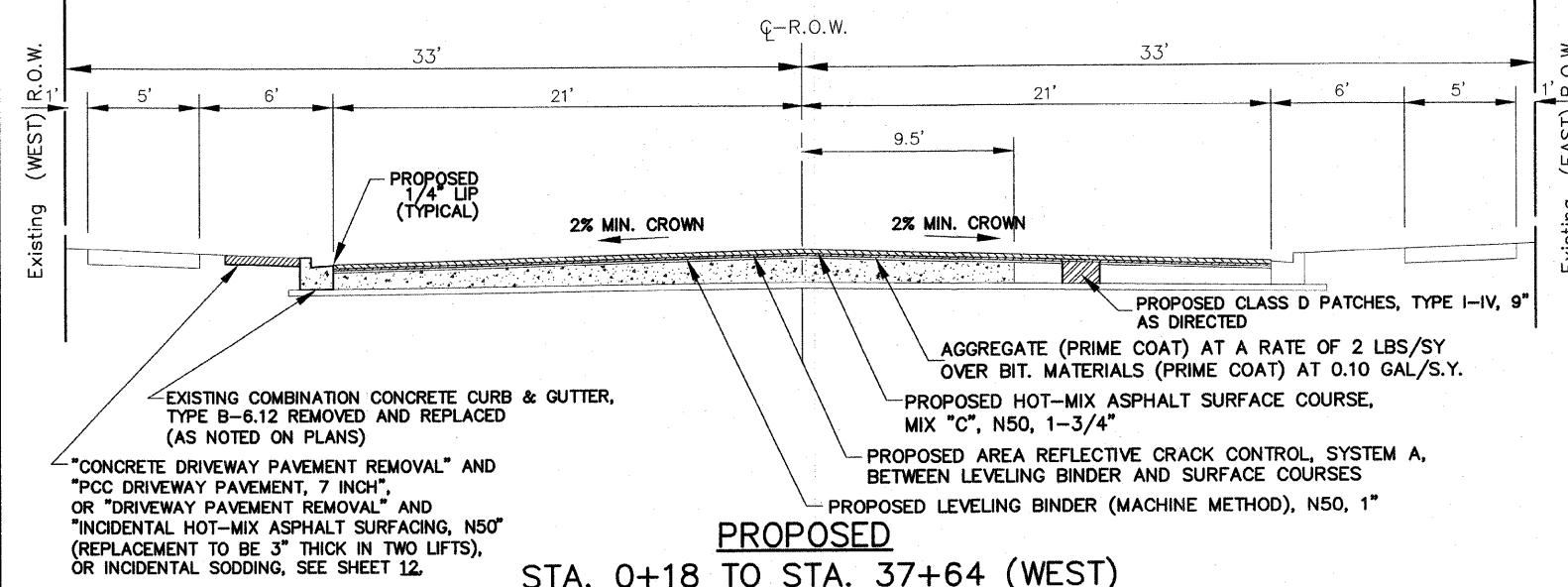
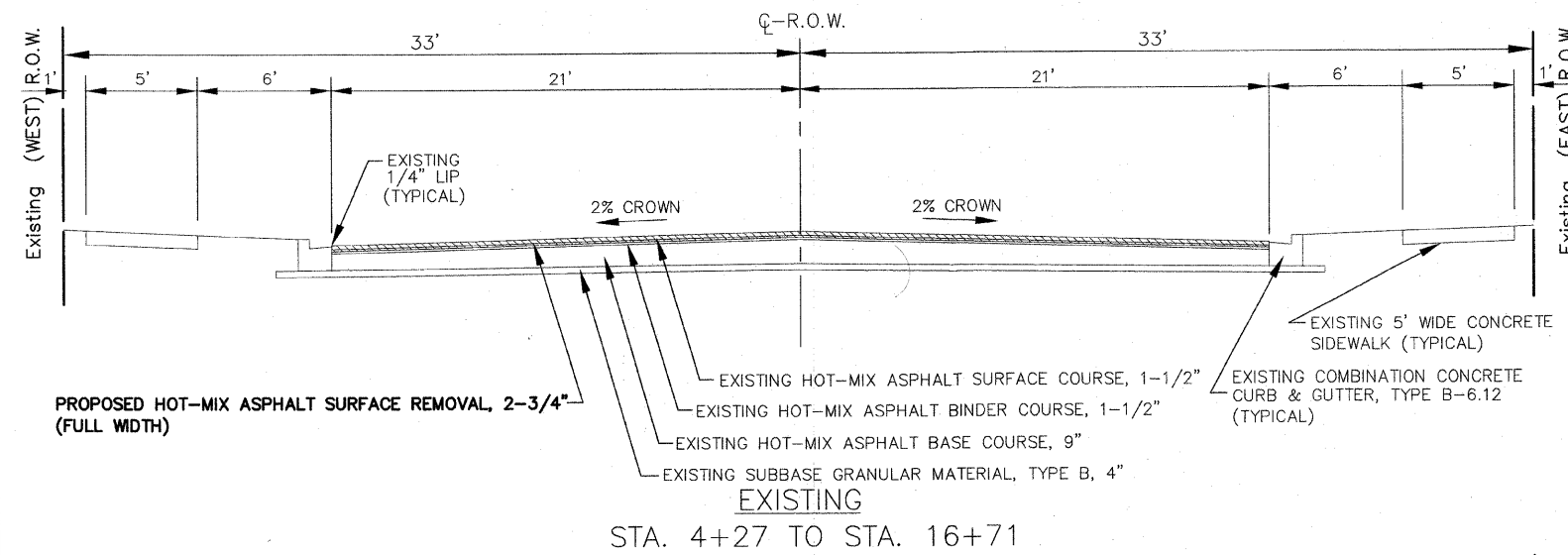
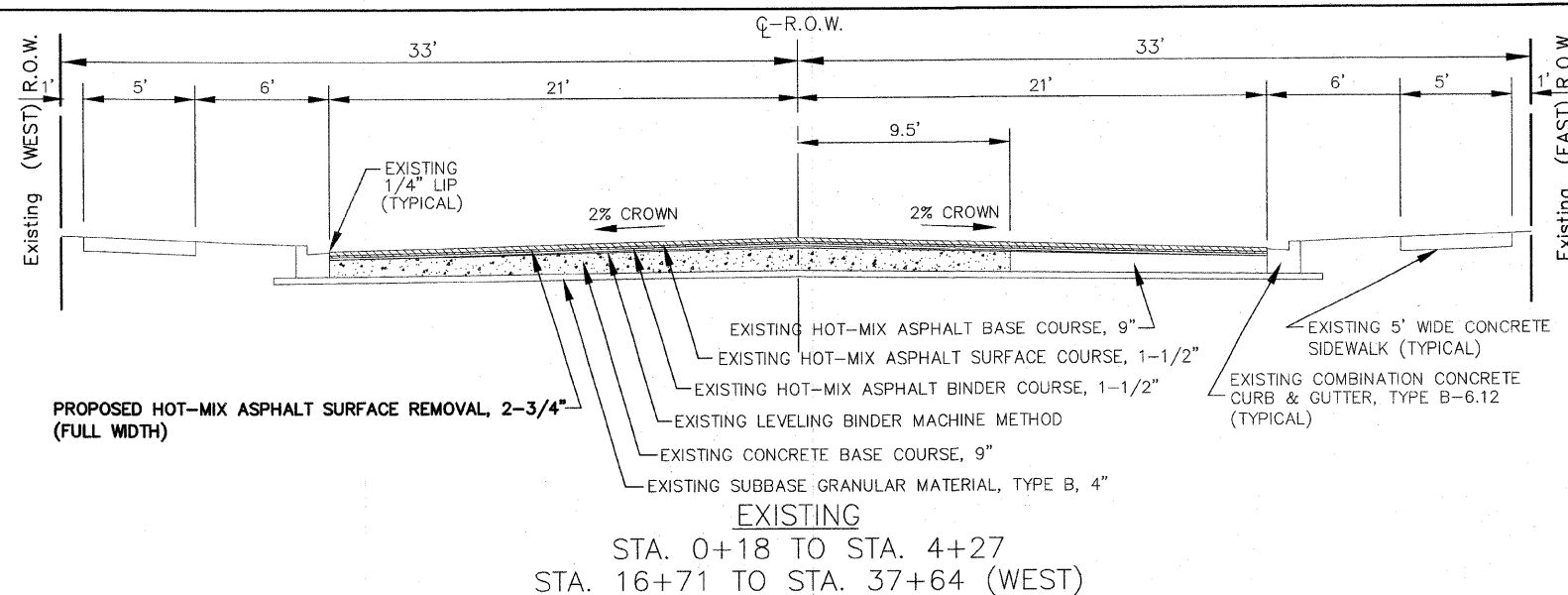
HOT-MIX ASPHALT MIXTURE REQUIREMENTS

MIXTURE TYPE	AC TYPE	PERCENT AIR VOIDS
ROADWAY		
HOT-MIX ASPHALT SURFACE COURSE, MIX "C", N50, 1-3/4" (IL-9.5mm)	PG 64-22	4% @ 50 GYR
LEVELING BINDER (MACHINE METHOD), N50, 1" (IL-9.5mm)	*PG 64-22	4% @ 50 GYR
DRIVEWAYS		
INCIDENTAL HOT-MIX ASPHALT SURFACING, MIX "C", N50, (IL 9.5 mm), 3"	PG 64-22	4% @ 50 GYR
PATCHING		
CLASS D PATCHES, TYPE I-IV, 9", (HMA BINDER IL-19.0mm)	*PG 64-22	4% @ 70 GYR

IMPORTANT!
 FULL SIZE PLANS HAVE BEEN PREPARED USING STANDARD ENGINEERING SCALES. REDUCED SIZED PLANS WILL NOT CONFORM TO STANDARD SCALES INDICATED IN TITLE BLOCK.

THE UNIT WEIGHT TO CALCULATE ALL HOT-MIX ASPHALT SURFACE MIXTURE QUANTITIES IS 112 LBS/SQ YD/IN.
 * WHEN RAP EXCEEDS 20%, THE NEW ASPHALT BINDER IN THE MIX SHALL BE PG 58-22.

NOTE: CONTRACTOR SHALL MILL BEFORE PATCHING.



TYPICAL CROSS SECTIONS

SCALE: 1"=4'

Frank Novotny & Associates, Inc.
 Civil Engineers/Municipal Consultants
 825 Midway Drive • Willowbrook, IL • 60527 • Telephone: (630) 887-8640 • Fax: (630) 887-0132
 Illinois Professional Design Firm No. 184-000928

PROJECT
VILLAGE OF LYONS, ILLINOIS
LAWDALE AVENUE LAPP RESURFACING
 SECTION 08-00058-00-RS

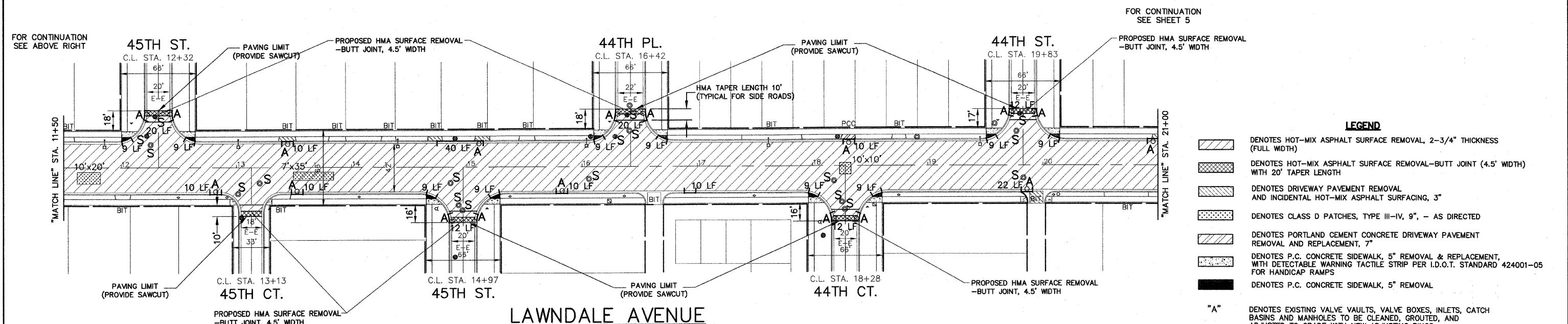
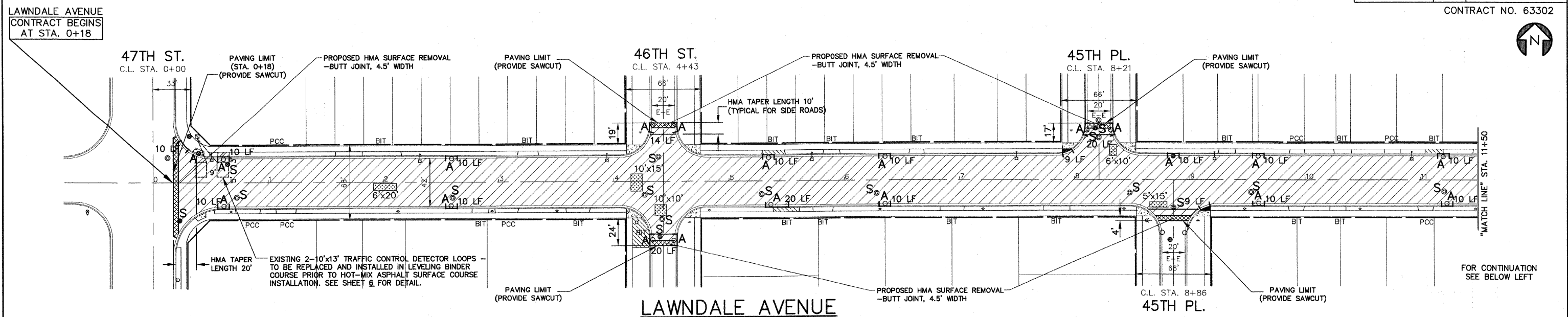
REVISIONS			
NO.	BY	DATE	DESCRIPTION
1	JLC	8/12/09	PER I.D.O.T. REVIEW

TYPICAL CROSS SECTIONS
 HOT-MIX ASPHALT
 MIXTURE REQUIREMENTS

PROJECT NO. 06189	SCALE NONE	SHEET 3
DRAWN/DESIGNED JFP-JEP/JLC	DATE JUNE, 2009	OF 15
CHECKED/APPROVED JLC	FIELD BOOK NO. FILE	SHEETS

FAU RTE	SECTION	COUNTY	TOTAL SHEETS	SHEET NO.
FAU 2792	08-00058-00-RS	COOK	15	4
F.H.W.A. REG.	ILLINOIS	PROJECT	ARA-9003(067)	

CONTRACT NO. 63302



- LEGEND**
- DENOTES HOT-MIX ASPHALT SURFACE REMOVAL, 2-3/4" THICKNESS (FULL WIDTH)
 - DENOTES HOT-MIX ASPHALT SURFACE REMOVAL-BUTT JOINT (4.5' WIDTH) WITH 20' TAPER LENGTH
 - DENOTES DRIVEWAY PAVEMENT REMOVAL AND INCIDENTAL HOT-MIX ASPHALT SURFACING, 3"
 - DENOTES CLASS D PATCHES, TYPE III-IV, 9", - AS DIRECTED
 - DENOTES PORTLAND CEMENT CONCRETE DRIVEWAY PAVEMENT REMOVAL AND REPLACEMENT, 7"
 - DENOTES P.C. CONCRETE SIDEWALK, 5" REMOVAL & REPLACEMENT, WITH DETECTABLE TACTILE STRIP PER I.D.O.T. STANDARD 424001-05 FOR HANDICAP RAMPS
 - DENOTES P.C. CONCRETE SIDEWALK, 5" REMOVAL
 - "A"** DENOTES EXISTING VALVE VAULTS, VALVE BOXES, INLETS, CATCH BASINS AND MANHOLES TO BE CLEANED, GROUTED, AND ADJUSTED TO GRADE WITH NEW ADJUSTING RINGS. (ALL TOP BANDS OF FALLEN, COMMON OR CONCRETE BRICK TO BE REPLACED WITH PRECAST CONCRETE ADJUSTING RINGS)
 - "S"** DENOTES EXISTING STRUCTURES TO BE ADJUSTED (SPECIAL) (SEE SHEET 13 FOR DETAIL)
 - 8 FT DENOTES COMBINATION CONCRETE CURB & GUTTER REMOVAL AND REPLACEMENT PROVIDE DETECTABLE WARNINGS AND RAMPS AT ALL SIDEWALK
 - DENOTES EXISTING SIDEWALK RAMP TO REMAIN

ALL SAW CUTS SHALL BE CONSIDERED INCIDENTAL TO THE CONTRACT.

FOR TYPICAL CROSS SECTION OF NEW PAVEMENT WORK SEE SHEET 3

IMPORTANT!

FULL SIZE PLANS HAVE BEEN PREPARED USING STANDARD ENGINEERING SCALES. REDUCED SIZED PLANS WILL NOT CONFORM TO STANDARD SCALES INDICATED IN TITLE BLOCK.

Frank Novotny & Associates, Inc.
 Civil Engineers/ Municipal Consultants
 825 Midway Drive ♦ Willowbrook, IL ♦ 60527 ♦ Telephone: (630) 887-8640 ♦ Fax: (630) 887-0132
 Illinois Professional Design Firm No. 184-000928

PROJECT

VILLAGE OF LYONS, ILLINOIS
LAWNDALE AVENUE LAPP RESURFACING
 SECTION 08-00058-00-RS

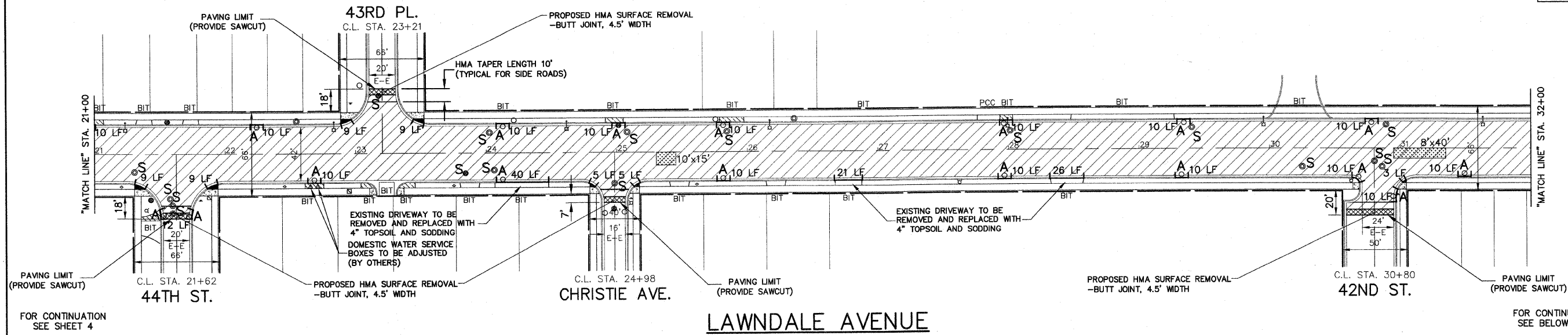
REVISIONS			
NO.	BY	DATE	DESCRIPTION
1	JLC	8/12/09	PER I.D.O.T. REVIEW

PLAN:
 LAWNDALE RD. (RESURFACING)-
 47TH ST. TO STA. 30+00

PROJECT NO. 06189	SCALE 1"=40'	SHEET 4
DRAWN/DESIGNED JFP-JEP/JLC	DATE JUNE, 2009	OF 15
CHECKED/APPROVED JLC	FIELD BOOK NO. FILE	SHEETS

FAU RTE	SECTION	COUNTY	TOTAL SHEETS	SHEET NO.
FAU 2792	08-00058-00-RS	COOK	15	5
F.H.W.A. REG.	ILLINOIS	PROJECT	ARA-9003(067)	

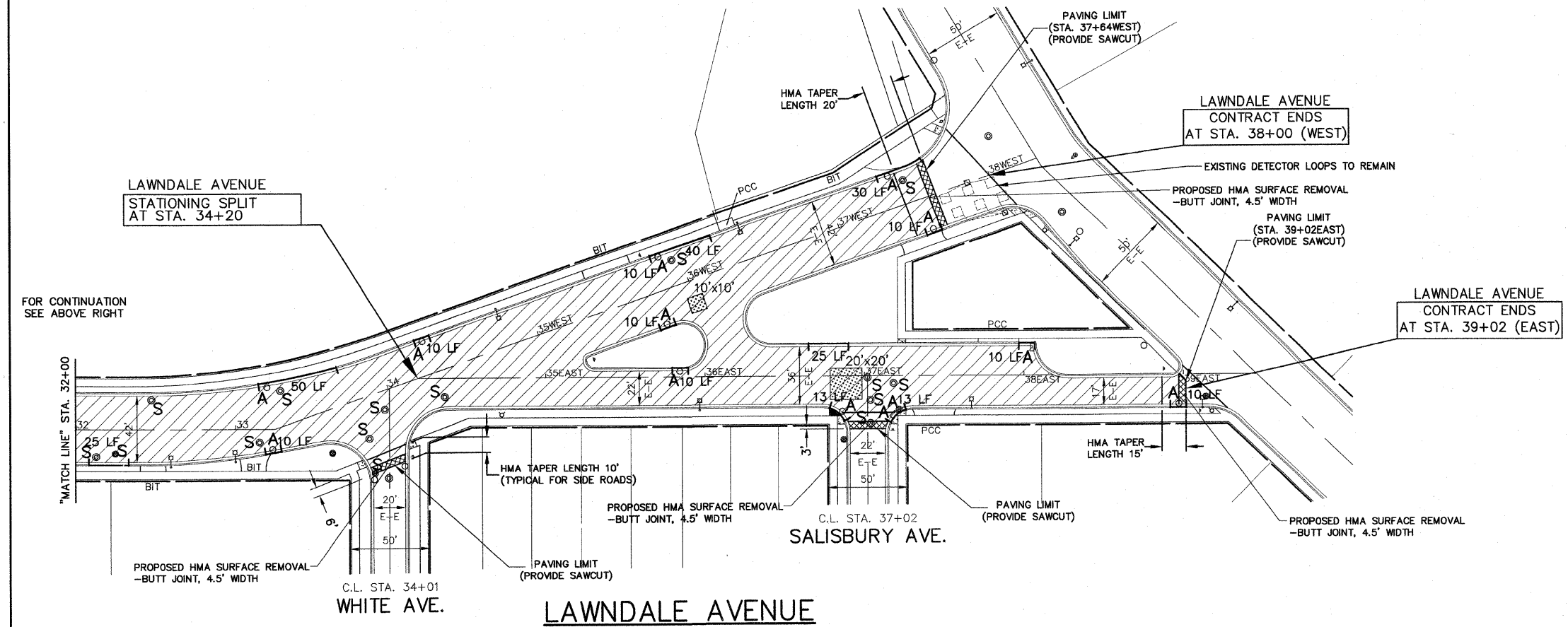
CONTRACT NO. 63302



LAWNDALE AVENUE

FOR CONTINUATION
SEE SHEET 4

FOR CONTINUATION
SEE BELOW LEFT



LAWNDALE AVENUE

FOR CONTINUATION
SEE ABOVE RIGHT

- LEGEND**
- DENOTES HOT-MIX ASPHALT SURFACE REMOVAL, 2-3/4" THICKNESS (FULL WIDTH)
 - DENOTES HOT-MIX ASPHALT SURFACE REMOVAL-BUTT JOINT (4.5' WIDTH) WITH 20' TAPER LENGTH
 - DENOTES DRIVEWAY PAVEMENT REMOVAL AND INCIDENTAL HOT-MIX ASPHALT SURFACING, 3"
 - DENOTES CLASS D PATCHES, TYPE III-IV, 9", - AS DIRECTED
 - DENOTES PORTLAND CEMENT CONCRETE DRIVEWAY PAVEMENT REMOVAL AND REPLACEMENT, 7"
 - DENOTES P.C. CONCRETE SIDEWALK, 5" REMOVAL & REPLACEMENT, WITH DETECTABLE WARNING TACTILE STRIP PER I.D.O.T. STANDARD 424001-05 FOR HANDICAP RAMPS
 - DENOTES P.C. CONCRETE SIDEWALK, 5" REMOVAL
 - "A"** DENOTES EXISTING VALVE VAULTS, VALVE BOXES, INLETS, CATCH BASINS AND MANHOLES TO BE CLEANED, GROUTED, AND ADJUSTED TO GRADE WITH NEW ADJUSTING RINGS. (ALL TOP BANDS OF FALLEN, COMMON OR CONCRETE BRICK TO BE REPLACED WITH PRECAST CONCRETE ADJUSTING RINGS)
 - "S"** DENOTES EXISTING STRUCTURES TO BE ADJUSTED (SPECIAL) (SEE SHEET 13 FOR DETAIL)
 - 8 FT
 - DENOTES COMBINATION CONCRETE CURB & GUTTER REMOVAL AND REPLACEMENT PROVIDE DETECTABLE WARNINGS AND RAMPS AT ALL SIDEWALK
 - DENOTES EXISTING SIDEWALK RAMP TO REMAIN

IMPORTANT!
FULL SIZE PLANS HAVE BEEN PREPARED USING STANDARD ENGINEERING SCALES. REDUCED SIZE PLANS WILL NOT CONFORM TO STANDARD SCALES INDICATED IN TITLE BLOCK.

Frank Novotny & Associates, Inc.
Civil Engineers/
Municipal Consultants
825 Midway Drive ♦ Willowbrook, IL ♦ 60527 ♦ Telephone: (630) 887-8640 ♦ Fax: (630) 887-0132
Illinois Professional Design Firm No. 184-000928

PROJECT
**VILLAGE OF LYONS, ILLINOIS
LAWNDALE AVENUE LAPP RESURFACING
SECTION 08-00058-00-RS**

REVISIONS			
NO.	BY	DATE	DESCRIPTION
1	JLC	8/12/09	PER I.D.O.T. REVIEW

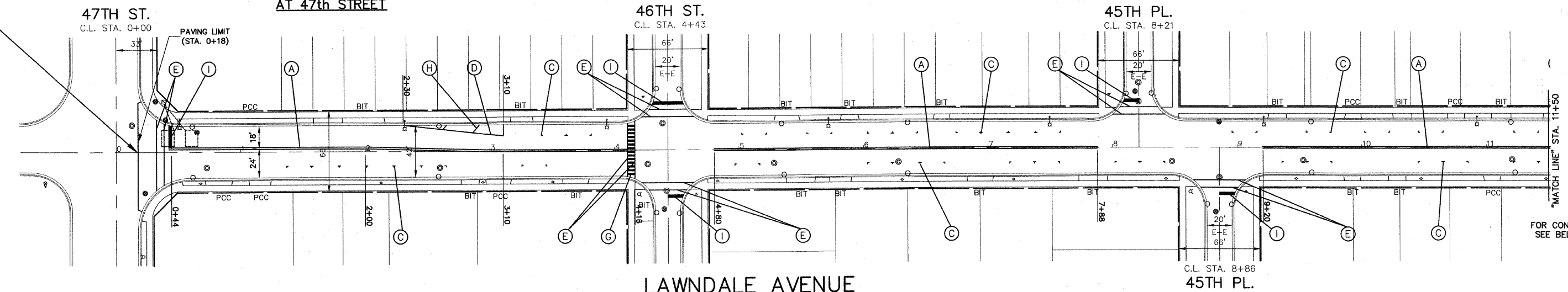
PLAN:
LAWNDALE RD. (RESURFACING)-
STA. 30+00 TO OGDEN AVE.

PROJECT NO. 06189	SCALE 1"=40'	SHEET 5
DRAWN/DESIGNED JFP-JEP/JLC	DATE JUNE, 2009	OF 15
CHECKED/APPROVED JLC	FIELD BOOK NO. FILE	SHEETS



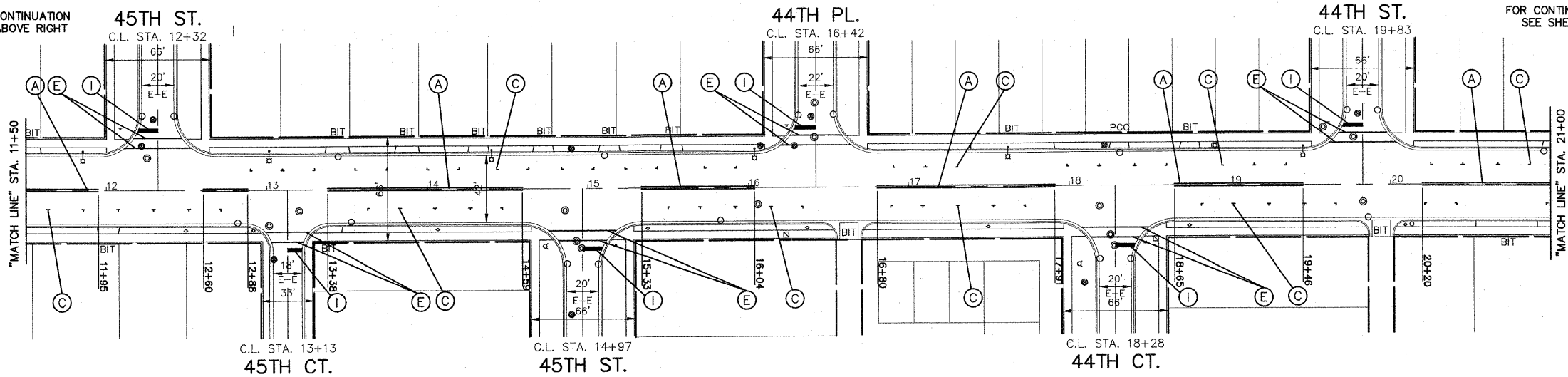
LAWDALE AVENUE
CONTRACT BEGINS
AT STA. 0+18

**DETECTOR LOOP INSTALLATION
AT 47th STREET**



FOR CONTINUATION
SEE BELOW LEFT

FOR CONTINUATION
SEE ABOVE RIGHT



NOTE:
ALL "ARROWS" AND "ONLYS" SHALL BE 8" IN HEIGHT.

NOTE:
PROPOSED DOUBLE SOLID YELLOW THERMOPLASTIC
PAVEMENT MARKING - CENTER LINE 4", 11" O/C (NOTE: A)
IS MEASURED PER LINE. TOTAL QUANTITY AND
PAYMENT LENGTH IS FOR EACH LINEAR FOOT OF
SINGLE 4" STRIPE INSTALLED.

NOTE:
SHORT-TERM PAVEMENT MARKING IS PROPOSED ON THE MILLED PAVEMENT, NEW
BINDER AND ON THE NEW SURFACE. SEE ARTICLE 703.04 OF THE LATEST EDITION
OF THE "STANDARD SPECIFICATIONS FOR ROAD AND BRIDGE CONSTRUCTION".

LAWDALE AVENUE

THERMOPLASTIC STRIPING CODE

- (A) PROPOSED DOUBLE SOLID YELLOW THERMOPLASTIC PAVEMENT MARKING - CENTER LINE 4", 11" O/C
- (B) PROPOSED SKIP-DASH YELLOW THERMOPLASTIC PAVEMENT MARKING - LINE 4" - 10' DASH, 30' SKIP (LANE LINE)
- (C) PROPOSED SOLID WHITE THERMOPLASTIC PAVEMENT MARKING - LINE 4" - (PARKING STALL LINE)
- (D) PROPOSED SOLID WHITE THERMOPLASTIC PAVEMENT MARKING - LINE 4" - (EDGE LINE)
- (E) PROPOSED SOLID WHITE THERMOPLASTIC PAVEMENT MARKING - LINE 6" (CROSSWALK & CAUTION LINE)
- (F) PROPOSED SOLID WHITE THERMOPLASTIC PAVEMENT MARKING - LINE 6" (LANE LINE)
- (G) PROPOSED SOLID WHITE THERMOPLASTIC PAVEMENT MARKING - LINE 12" (PEDESTRIAN SCHOOL CROSSING)
- (H) PROPOSED SOLID YELLOW THERMOPLASTIC PAVEMENT MARKING - LINE 12", 45' DIAGONALS, (MEDIAN & CAUTION LINE)
- (I) PROPOSED SOLID WHITE THERMOPLASTIC PAVEMENT MARKING - LINE 24" (STOP BAR)
- (J) PROPOSED SOLID WHITE THERMOPLASTIC PAVEMENT MARKING - LETTERS & SYMBOLS

IMPORTANT!
FULL SIZE PLANS HAVE BEEN
PREPARED USING STANDARD
ENGINEERING SCALES. REDUCED
SIZED PLANS WILL NOT CONFORM
TO STANDARD SCALES INDICATED
IN TITLE BLOCK.

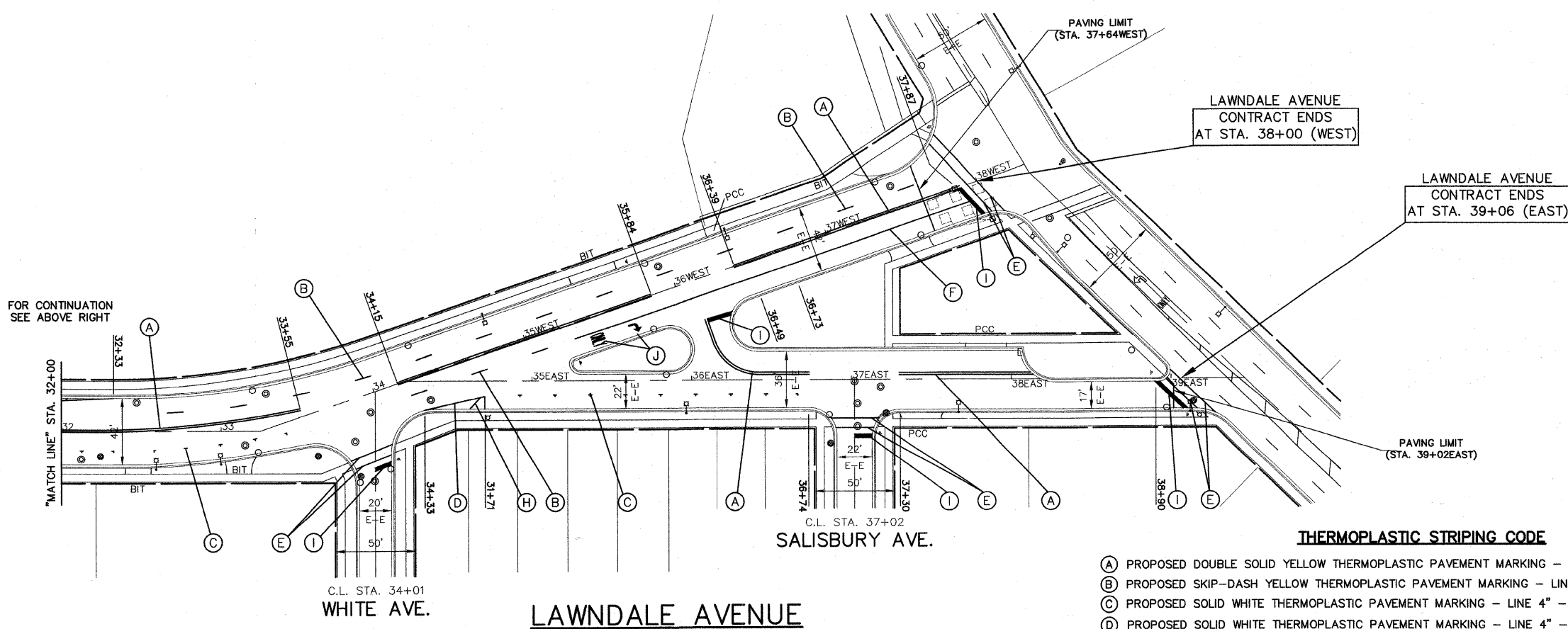
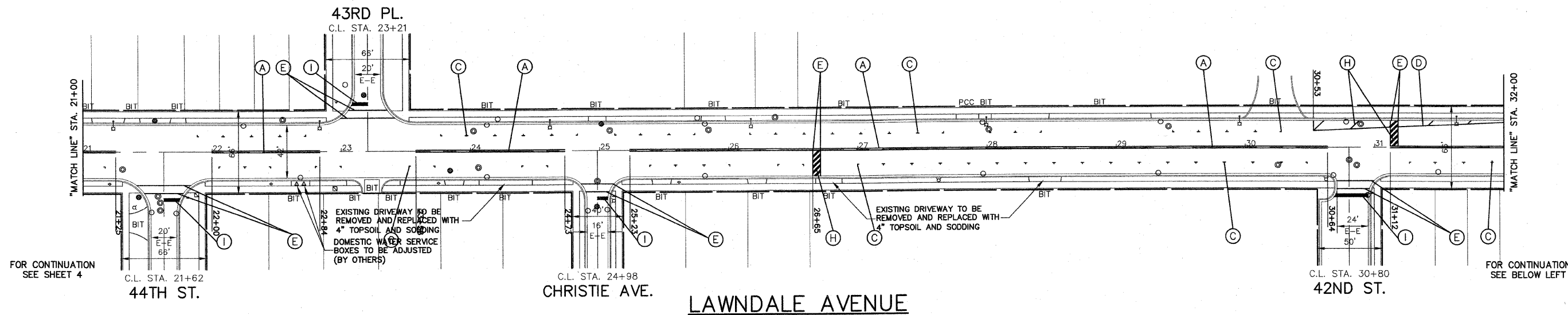
Frank Novotny & Associates, Inc.
Civil Engineers/
Municipal Consultants
825 Midway Drive • Willowbrook, IL • 60527 • Telephone: (630) 887-8640 • Fax: (630) 887-0132
Illinois Professional Design Firm No. 184-000928

PROJECT
**VILLAGE OF LYONS, ILLINOIS
LAWDALE AVENUE LAPP RESURFACING
SECTION 08-00058-00-RS**

REVISIONS			
NO.	BY	DATE	DESCRIPTION
1	JLC	8/12/09	PER I.D.O.T. REVIEW

PLAN:
LAWDALE RD. (PAVEMENT MARKING)-
47TH ST. TO STA. 30+00

PROJECT NO. 06189	SCALE 1"=40'	SHEET 6
DRAWN/DESIGNED JFP-JEP/JLC	DATE JUNE, 2009	OF 15
CHECKED/APPROVED JLC	FIELD BOOK NO. FILE	SHEETS



NOTE:
ALL "ARROWS" AND "ONLYS" SHALL BE 8' IN HEIGHT.

NOTE:
PROPOSED DOUBLE SOLID YELLOW THERMOPLASTIC PAVEMENT MARKING - CENTER LINE 4", 11" O/C (NOTE: (A)) IS MEASURED PER LINE. TOTAL QUANTITY AND PAYMENT LENGTH IS FOR EACH LINEAR FOOT OF SINGLE 4" STRIPE INSTALLED.

NOTE:
SHORT-TERM PAVEMENT MARKING IS PROPOSED ON THE MILLED PAVEMENT, NEW BINDER AND ON THE NEW SURFACE. SEE ARTICLE 703.04 OF THE LATEST EDITION OF THE "STANDARD SPECIFICATIONS FOR ROAD AND BRIDGE CONSTRUCTION".

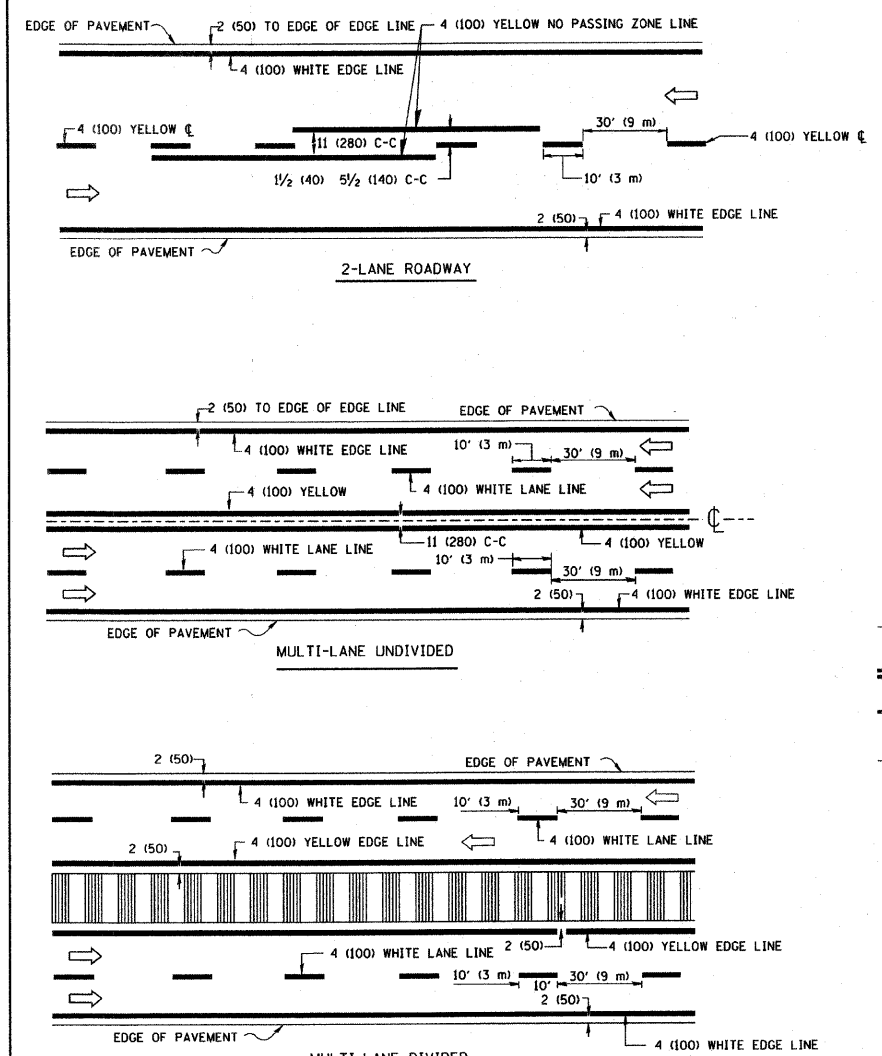
- THERMOPLASTIC STRIPING CODE**
- (A) PROPOSED DOUBLE SOLID YELLOW THERMOPLASTIC PAVEMENT MARKING - CENTER LINE 4", 11" O/C
 - (B) PROPOSED SKIP-DASH YELLOW THERMOPLASTIC PAVEMENT MARKING - LINE 4" - 10' DASH, 30' SKIP (LANE LINE)
 - (C) PROPOSED SOLID WHITE THERMOPLASTIC PAVEMENT MARKING - LINE 4" - (PARKING STALL LINE)
 - (D) PROPOSED SOLID WHITE THERMOPLASTIC PAVEMENT MARKING - LINE 4" - (EDGE LINE)
 - (E) PROPOSED SOLID WHITE THERMOPLASTIC PAVEMENT MARKING - LINE 6" (CROSSWALK & CAUTION LINE)
 - (F) PROPOSED SOLID WHITE THERMOPLASTIC PAVEMENT MARKING - LINE 6" (LANE LINE)
 - (G) PROPOSED SOLID WHITE THERMOPLASTIC PAVEMENT MARKING - LINE 12" (PEDESTRIAN SCHOOL CROSSING)
 - (H) PROPOSED SOLID YELLOW THERMOPLASTIC PAVEMENT MARKING - LINE 12", 45° DIAGONALS, (MEDIAN & CAUTION LINE)
 - (I) PROPOSED SOLID WHITE THERMOPLASTIC PAVEMENT MARKING - LINE 24" (STOP BAR)
 - (J) PROPOSED SOLID WHITE THERMOPLASTIC PAVEMENT MARKING - LETTERS & SYMBOLS

IMPORTANT!
FULL SIZE PLANS HAVE BEEN PREPARED USING STANDARD ENGINEERING SCALES. REDUCED SIZED PLANS WILL NOT CONFORM TO STANDARD SCALES INDICATED IN TITLE BLOCK.

REVISIONS			
NO.	BY	DATE	DESCRIPTION
1	JLC	8/12/09	PER I.D.O.T. REVIEW

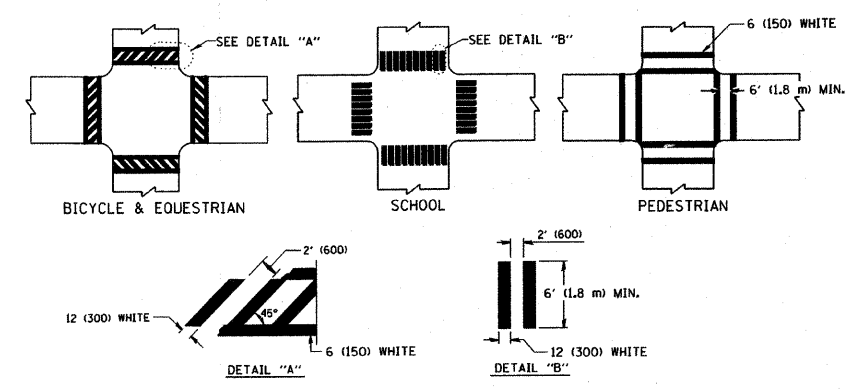
PLAN:
LAWDALE RD. (PAVEMENT MARKING)-
STA. 30+00 TO OGDEN AVE.

PROJECT NO. 06189	SCALE 1"=40'	SHEET 7
DRAWN/DESIGNED JFP-JEP/JLC	DATE JUNE, 2009	OF 15
CHECKED/APPROVED JLC	FIELD BOOK NO. FILE	SHEETS

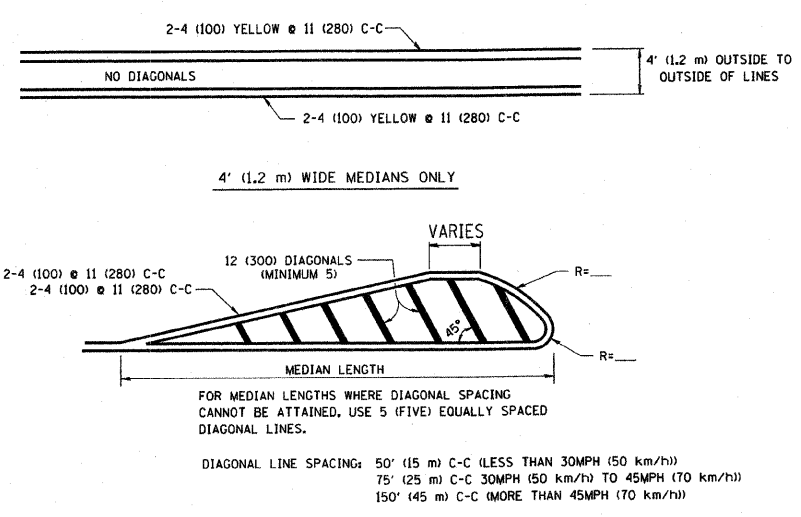


TYPICAL LANE AND EDGE LINE MARKING

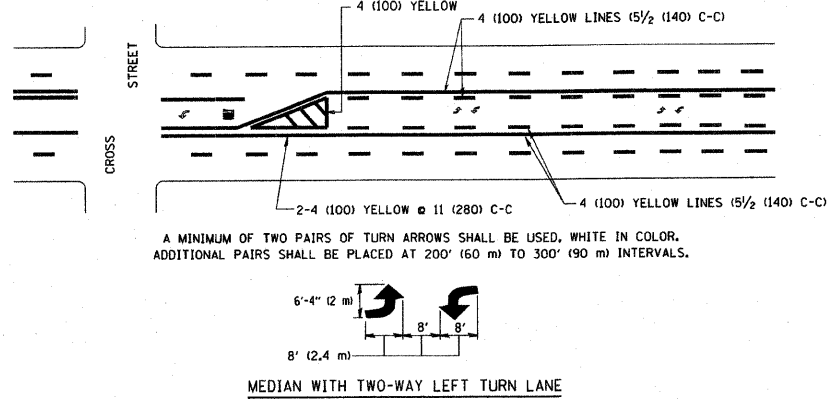
NOTE: MEDIANS WITH BARRIER CURB DO NOT REQUIRE AN EDGE LINE



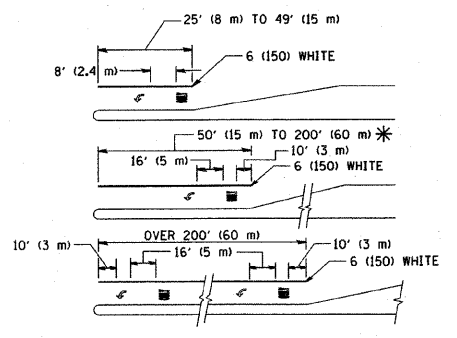
TYPICAL CROSSWALK MARKING



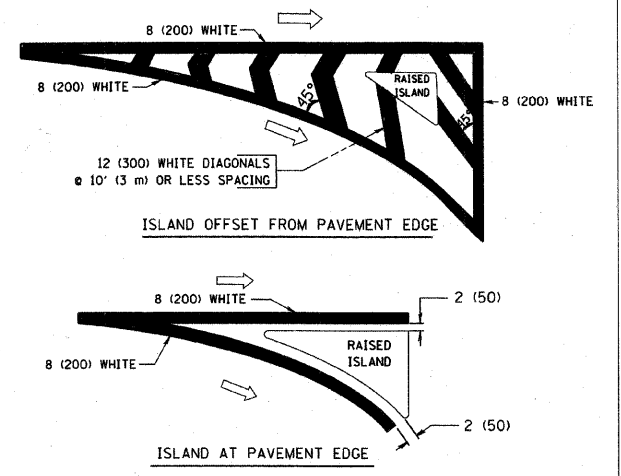
TYPICAL PAINTED MEDIAN MARKING



TYPICAL TURN LANE MARKING



TYPICAL LEFT (OR RIGHT) TURN LANE



TYPICAL ISLAND MARKING

TYPE OF MARKING	WIDTH OF LINE	PATTERN	COLOR	SPACING / REMARKS
CENTERLINE ON 2 LANE PAVEMENT	4 (100)	SKIP-DASH	YELLOW	10' (3 m) LINE WITH 30' (9 m) SPACE
CENTERLINE ON MULTI-LANE UNDIVIDED PAVEMENT	2 @ 4 (100)	SOLID	YELLOW	11 (280) C-C
NO PASSING ZONE LINES FOR BOTH DIRECTIONS	4 (100) 2 @ 4 (100)	SOLID SOLID	YELLOW YELLOW	5/2 (140) C-C FROM SKIP-DASH CENTERLINE 11 (280) C-C OMIT SKIP-DASH CENTERLINE BETWEEN
LANE LINES	4 (100) 5 (125) ON FREEWAYS	SKIP-DASH SKIP-DASH	WHITE WHITE	10' (3 m) LINE WITH 30' (9 m) SPACE
DOTTED LINES (EXTENSIONS OF CENTER, LANE OR TURN LANE MARKINGS)	SAME AS LINE BEING EXTENDED	SKIP-DASH	SAME AS LINE BEING EXTENDED	2' (600) LINE WITH 6' (1.8 m) SPACE
EDGE LINES	4 (100)	SOLID	YELLOW-LEFT WHITE-RIGHT	OUTLINE MOUNTABLE MEDIANS IN YELLOW; EDGE LINES ARE NOT USED NEXT TO BARRIER CURB
TURN LANE MARKINGS	6 (150) LINE; FULL SIZE LETTERS & SYMBOLS (8' (2.4m))	SOLID	WHITE	SEE TYPICAL TURN LANE MARKING DETAIL
TWO WAY LEFT TURN MARKING	2 @ 4 (100) EACH DIRECTION 8' (2.4m) LEFT ARROW	SKIP-DASH AND SOLID IN PAIRS	YELLOW WHITE	10' (3 m) LINE WITH 30' (9 m) SPACE FOR SKIP-DASH; 5/2 (140) C-C BETWEEN SOLID LINE AND SKIP-DASH LINE SEE TYPICAL TWO-WAY LEFT TURN MARKING DETAIL
CROSSWALK LINES (PEDESTRIAN) A. DIAGONALS (BIKE & EQUESTRIAN) B. LONGITUDINAL BARS (SCHOOL)	2 @ 6 (150) 12 (300) @ 45° 12 (300) @ 90°	SOLID SOLID SOLID	WHITE WHITE WHITE	NOT LESS THAN 6' (1.8 m) APART 2' (600) APART SEE TYPICAL CROSSWALK MARKING DETAILS.
STOP LINES	24 (600)	SOLID	WHITE	PLACE 4' (1.2 m) IN ADVANCE OF AND PARALLEL TO CROSSWALK, IF PRESENT. OTHERWISE, PLACE AT DESIRED STOPPING POINT. PARALLEL TO CROSSROAD CENTERLINE, WHERE POSSIBLE
PAINTED MEDIANS	2 @ 4 (100) WITH 12 (300) DIAGONALS @ 45° NO DIAGONALS USED FOR 4' (1.2 m) WIDE MEDIANS	SOLID	YELLOW; TWO WAY TRAFFIC WHITE; ONE WAY TRAFFIC	11 (280) C-C FOR THE DOUBLE LINE SEE TYPICAL PAINTED MEDIAN MARKING.
GORE MARKING AND CHANNELIZING LINES	8 (200) WITH 12 (300) DIAGONALS @ 45°	SOLID	WHITE	DIAGONALS: 15' (4.5 m) C-C (LESS THAN 30MPH (50 km/h)) 20' (6 m) C-C 30MPH (50 km/h) TO 45MPH (70 km/h) 30' (9 m) C-C (OVER 45MPH (70 km/h))
RAILROAD CROSSING	24 (600) TRANSVERSE LINES; "RR" IS 6' (1.8 m) LINE FOR "X"	SOLID	WHITE	SEE STATE STANDARD 780001 AREA OF: "R"=3.6 SO. FT. (0.33 m ²) EACH "X"=54.0 SO. FT. (5.0 m ²)
SHOULDER DIAGONALS	12 (300) @ 45°	SOLID	WHITE - RIGHT YELLOW - LEFT	50' (15 m) C-C (LESS THAN 30MPH (50 km/h)) 75' (25 m) C-C (30 MPH (50 km/h) TO 45MPH (70 km/h)) 150' (45 m) C-C (OVER 45MPH (70 km/h))

FOR FURTHER DETAILS ON PAVEMENT MARKING REFER TO STANDARD SPECIFICATIONS FOR ROAD AND BRIDGE CONSTRUCTION AND STATE STANDARD 780001.

	LARGE SIZE	SMALL SIZE
THROUGH ARROW	1.07 (11.5)	0.60 (6.5)
LEFT OF RIGHT ARROW	1.47 (15.6)	0.60 (6.5)
COMBINATION LEFT (RIGHT) AND THROUGH ARROW	2.42 (26.0)	1.37 (14.7)
RAILROAD "R" 1.8m (6ft.)	0.33 (3.6)	—
RAILROAD "X" 6.1m (20ft.)	5.02(54.0)	—
HANDICAPPED SYMBOL	0.43 (4.6)	—

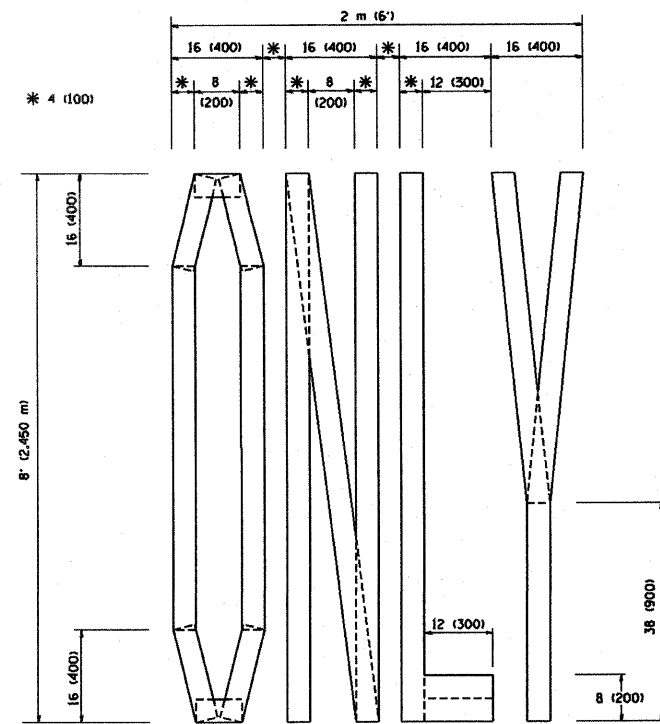
REVISIONS	
NAME	DATE
EVERS	03-19-90
T. RAMMACHER	10-27-94
ALEX HOUSEH	10-09-96
ALEX HOUSEH	10-17-96
T. RAMMACHER	01-06-00

ILLINOIS DEPARTMENT OF TRANSPORTATION
DISTRICT ONE
TYPICAL PAVEMENT MARKINGS
SCALE: NONE
DRAWN BY CADD
CHECKED BY TC-13

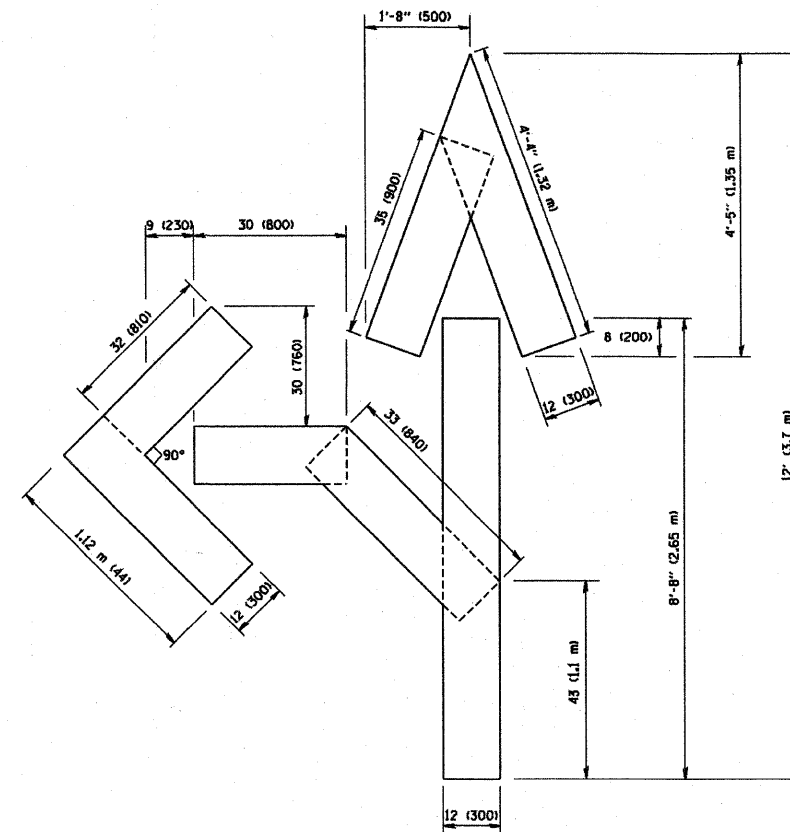
DATE: 3/6/2007
FILE NAME: M:\Users\jca13\My Documents\TC-13.dwg
USER NAME: jca13

FAU RTE	SECTION	COUNTY	TOTAL SHEETS	SHEET NO.
FAU 2792	08-00058-00-RS	COOK	15	9
F.H.W.A. REG.	ILLINOIS PROJECT	ARA-9003(067)		

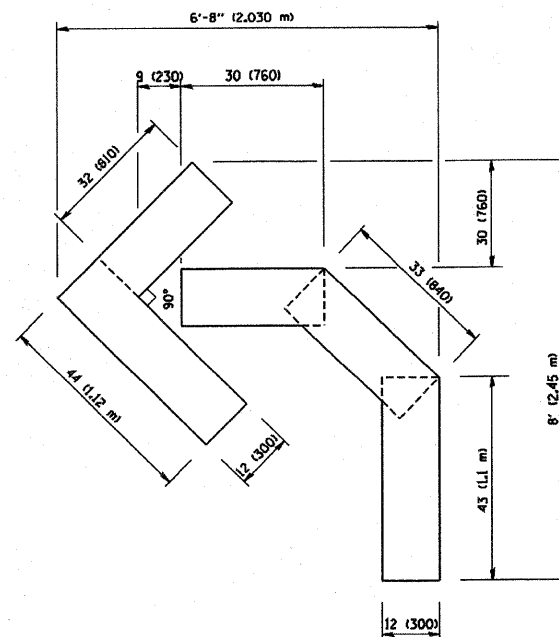
CONTRACT NO. 63302



QUANTITY
4 (100) LINE = 64.1 ft. (19.7 m)
21.1 sq. ft. (1.97 sq. m)



QUANTITY
4 (100) LINE = 82.5 ft. (25.3 m)
27.5 sq. ft. (2.53 sq. m)



QUANTITY
4 (100) LINE = 45.5 ft. (13.9 m)
15.2 sq. ft. (1.39 sq. m)

All dimensions are in inches (millimeters) unless otherwise shown.

REVISIONS	
NAME	DATE
T. RAMMACHER	09/18/94
J. OBERLE	06/01/96
T. RAMMACHER	06/05/96
T. RAMMACHER	11/04/97
T. RAMMACHER	03/02/98
E. GOMEZ	08/28/00

ILLINOIS DEPARTMENT OF TRANSPORTATION

**PAYEMENT MARKING
LETTERS AND SYMBOLS
FOR TRAFFIC STAGING**

SCALE: NONE

DRAWN BY CADD

CHECKED BY

TC-16

PLOT DATE = 3/7/2007
PLOT SCALE = 1/8" = 1'-0"
PLOT NAME = 0800058-00-RS-09.dwg
USER NAME = bward



Frank Novotny & Associates, Inc.

Civil Engineers/
Municipal Consultants
825 Midway Drive ♦ Willowbrook, IL ♦ 60527 ♦ Telephone: (630) 887-8640 ♦ Fax: (630) 887-0132
Illinois Professional Design Firm No. 184-000928

PROJECT

VILLAGE OF LYONS, ILLINOIS
LAWDALE AVENUE LAPP RESURFACING
SECTION 08-00058-00-RS

REVISIONS			
NO.	BY	DATE	DESCRIPTION

PAVEMENT MARKING
LETTERS AND SYMBOLS
FOR TRAFFIC STAGING

PROJECT NO.
06189

SCALE
NONE

DRAWN/DESIGNED
JFP-JEP/JLC

DATE
JUNE, 2009

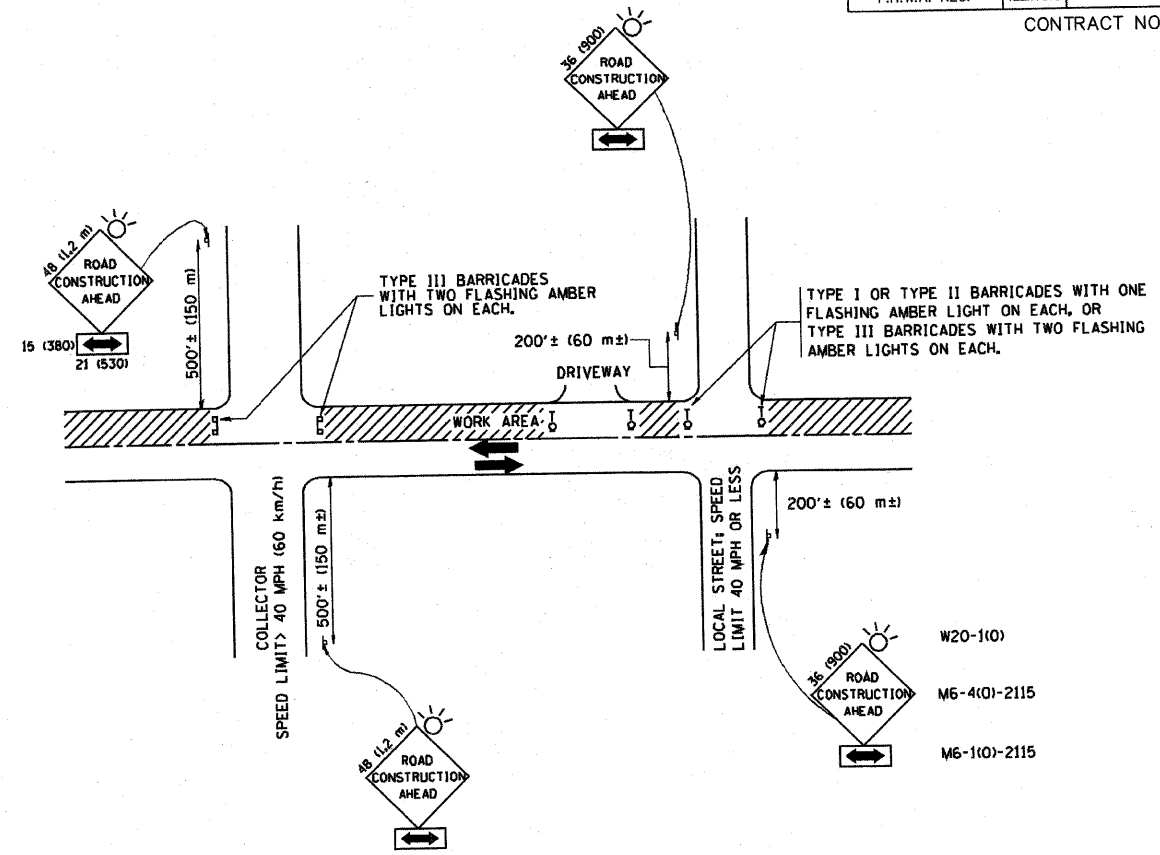
CHECKED/APPROVED
JLC

FIELD BOOK NO.
FILE

SHEET
9
OF
15
SHEETS

FAU RTE	SECTION	COUNTY	TOTAL SHEETS	SHEET NO.
FAU 2792	08-00058-00-RS	COOK	15	10
F.H.W.A. REG.		ILLINOIS PROJECT	ARA-9003(067)	

CONTRACT NO. 63302



TRAFFIC CONTROL AND PROTECTION FOR SIDE ROADS, INTERSECTIONS, AND DRIVEWAYS

NOTES:

- A. FOR NO LANE RESTRICTION ON THE SIDE ROAD OR DRIVEWAYS**
- SIDE ROAD WITH A SPEED LIMIT OF 40 MPH (60 km/h) OR LESS AS SHOWN ON THE DRAWING AND AS DIRECTED BY THE ENGINEER:
 - ONE ROAD CONSTRUCTION AHEAD SIGN 36 x 36 (900x900) WITH A FLASHER AND FLAG MOUNTED ON IT APPROXIMATELY 200' (60 m) IN ADVANCE OF THE MAIN ROUTE.
 - THE CLOSED PORTION OF THE MAIN ROUTE SHALL BE PROTECTED BY BLOCKING WITH TYPE I, TYPE II OR TYPE III BARRICADES, 1/3 OF THE CROSS SECTION OF THE CLOSED PORTION.
 - SIDE ROAD WITH A SPEED LIMIT GREATER THAN 40 MPH (60 km/h) AS SHOWN ON THE DRAWING AND AS DIRECTED BY THE ENGINEER:
 - ONE ROAD CONSTRUCTION AHEAD SIGN 48 x 48 (1.2 m x 1.2 m) WITH A FLASHER MOUNTED ON IT APPROXIMATELY 500' (150 m) IN ADVANCE OF THE MAIN ROUTE.
 - THE CLOSED PORTION OF THE MAIN ROUTE SHALL BE PROTECTED BY BLOCKING WITH TYPE III BARRICADES, 1/2 OF THE CROSS SECTION OF THE CLOSED PORTION.
 - WHEN THE SIDE ROAD LIES BETWEEN THE BEGINNING OF THE MAINLINE SIGNING AND THE WORK ZONE, A SINGLE HEADED ARROW (M6-1) SHALL BE USED IN LIEU OF THE DOUBLE HEADED ARROW (M6-4).
- B. FOR A LANE CLOSURE ON A SIDE ROAD OR DRIVEWAY:**
 USE APPLICABLE PORTIONS OF THE TYPICAL APPLICATION OF TRAFFIC CONTROL DEVICES (STD. 701501, STD. 701606 OR THE APPROPRIATE STANDARD). THE SPACING OF SIGNS AND BARRICADES SHALL BE ADJUSTED FOR FIELD CONDITIONS AS DIRECTED BY THE ENGINEER. THE DIRECTIONAL ARROW SHALL BE COVERED OR REMOVED WHEN NO LONGER CONSISTENT WITH THE SIDE ROAD LANE CLOSURE.
- C. ADVANCE WARNING SIGNS ARE TO BE OMITTED ON DRIVEWAY UNLESS OTHERWISE NOTED.**
- D. THE TRAFFIC CONTROL AND PROTECTION FOR SIDE ROADS, INTERSECTIONS, AND DRIVEWAYS SHALL BE INCIDENTAL TO THE COST OF SPECIFIED TRAFFIC CONTROL STANDARDS OR ITEMS.**

All dimensions are in millimeters (inches) unless otherwise shown.

REVISIONS	
NAME	DATE
LHA	6/89
T. RAMMACHER	09/08/94
J. OBERLE	10/18/95
A. HOUSEH	03/06/96
A. HOUSEH	10/15/96
T. RAMMACHER	01/06/00

ILLINOIS DEPARTMENT OF TRANSPORTATION
 TRAFFIC CONTROL AND PROTECTION FOR
 SIDE ROADS, INTERSECTIONS, AND
 DRIVEWAYS

SCALE: NONE
 DRAWN BY: JLC
 CHECKED BY: JLC
 TC-10

PLOT DATE: 2/15/2007
 PLOT SCALE: 1/8" = 1'-0"
 USER NAME: bham-d

Frank Novotny & Associates, Inc.
 Civil Engineers/
 Municipal Consultants
 825 Midway Drive • Willowbrook, IL • 60527 • Telephone: (630) 887-8640 • Fax: (630) 887-0132
 Illinois Professional Design Firm No. 184-000928

PROJECT: VILLAGE OF LYONS, ILLINOIS
 LAWDALE AVENUE LAPP RESURFACING
 SECTION 08-00058-00-RS

REVISIONS			
NO.	BY	DATE	DESCRIPTION

TRAFFIC CONTROL &
 PROTECTION FOR SIDE
 ROADS, INTERSECTIONS,
 & DRIVEWAYS

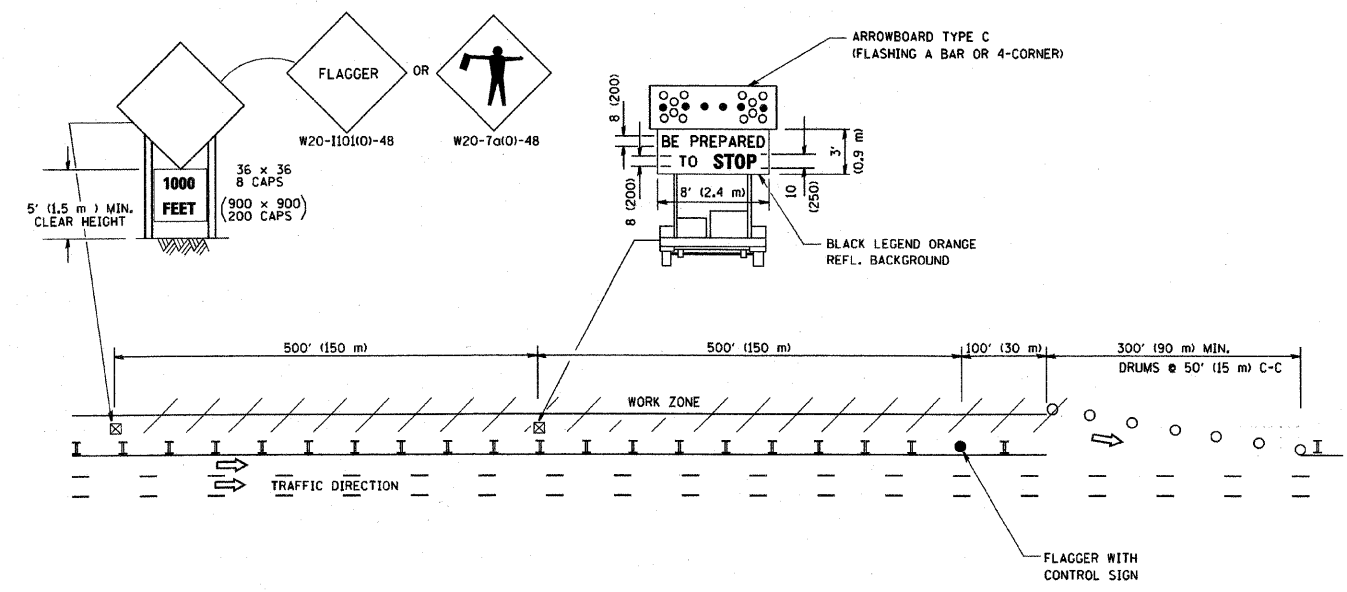
PROJECT NO. 06189	SCALE NONE	SHEET 10
DRAWN/DESIGNED JFP-JEP/JLC	DATE JUNE, 2009	OF 15
CHECKED/APPROVED JLC	FIELD BOOK NO. FILE	SHEETS

FAU RTE	SECTION	COUNTY	TOTAL SHEETS	SHEET NO.
FAU 2792	08-00058-00-RS	COOK	15	11
F.H.W.A. REG.	ILLINOIS	PROJECT	ARA-9003(067)	

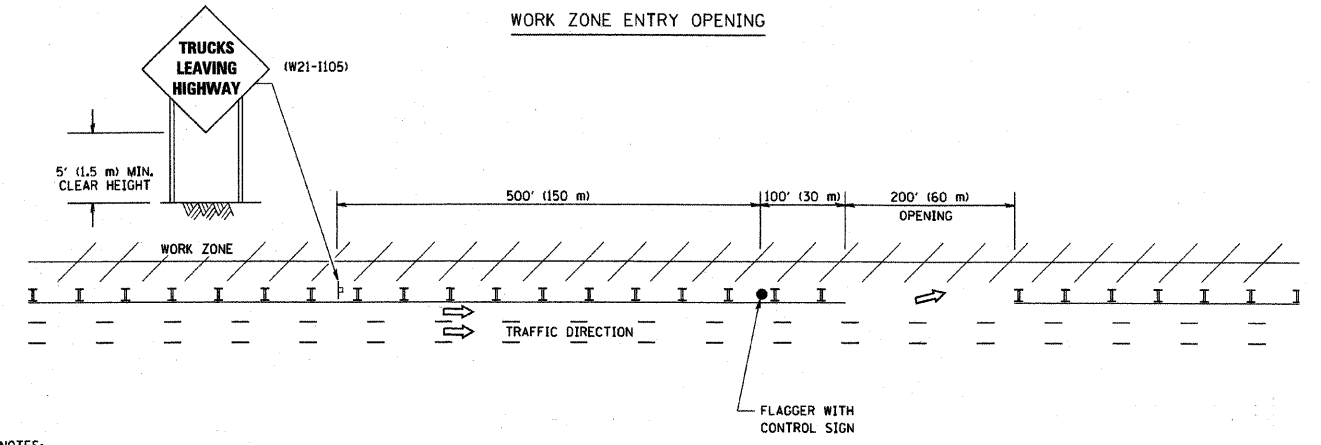
CONTRACT NO. 63302

SIGNING FOR FLAGGING OPERATIONS AT WORK ZONE OPENINGS

WORK ZONE EXIT OPENING



WORK ZONE ENTRY OPENING



NOTES:

1. The Arrowboard, the Flagger Ahead trailer mounted sign, and the Trucks Leaving Highway sign shall be removed or turned away from traffic and the exit and entry openings shall be closed when the flagging operation ceases.
2. Work Zone Exit Openings should be a minimum of one half mile apart.
3. Exiting the work zone at any place other than at a Work Zone Exit Opening will be prohibited.
4. All vehicles shall enter the work zone at entry openings, using their turn signals to warn motorists

ALL DIMENSIONS ARE IN INCHES (MILLIMETERS) UNLESS OTHERWISE SHOWN

REVISIONS	
NO.	DATE

ILLINOIS DEPARTMENT OF TRANSPORTATION
SIGNING FOR FLAGGING OPERATIONS AT WORK ZONE OPENINGS

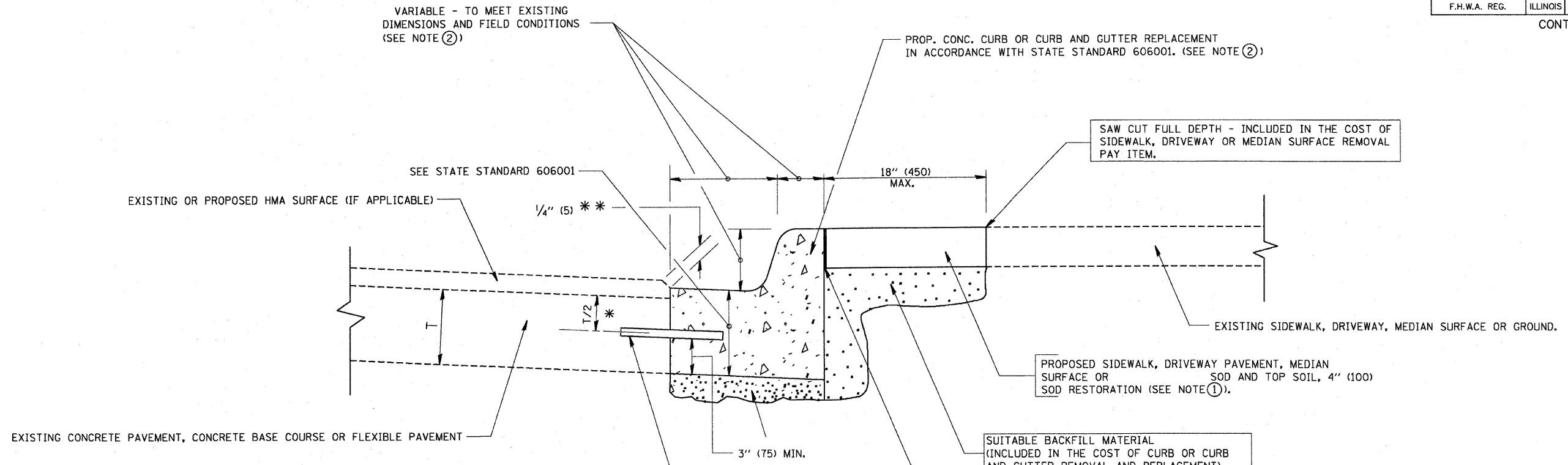
SCALE: NONE
DRAWN BY CADD
CHECKED BY TC-1B

DATE: 8/17/2007
FILE NAME: K:\A\1100\1100.dwg
PLOT SCALE: 1/8"=1'-0"
USER NAME: bboard

REVISIONS			
NO.	BY	DATE	DESCRIPTION

FAU RTE	SECTION	COUNTY	TOTAL SHEETS	SHEET NO.
FAU 2792	08-00058-00-RS	COOK	15	12
F.H.W.A. REG.	ILLINOIS PROJECT	ARA-9003(067)		

CONTRACT NO. 63302



- * 3" (75) MINIMUM FROM TOP AND BOTTOM OF THE CONCRETE PAVEMENT OR BASE COURSE.
- ** IF THE FINAL SURFACE OF THE PAVEMENT IS CONCRETE, THE GUTTER IS TO BE FLUSH WITH THE PAVEMENT.

NOTE: ① SIDEWALK, DRIVEWAY PAVEMENT OR MEDIAN SURFACE SHALL BE SIMILAR TO THE MATERIAL BEING REMOVED AND WILL BE PAID FOR SEPARATELY.

SALT TOLERANT SOD AND TOP SOIL, 4" (100) RESTORATION WILL NOT BE PAID FOR SEPARATELY, BUT SHALL BE INCLUDED IN THE COST OF CURB OR CURB AND GUTTER REMOVAL AND REPLACEMENT.

- ② CURB OR CURB AND GUTTER REPLACEMENT SHALL MATCH THE SHAPE OF THE EXISTING CURB OR CURB AND GUTTER UNLESS OTHERWISE SPECIFIED.
- ③ FOR CURB OR CURB AND GUTTER REMOVAL AND REPLACEMENT ADJACENT TO FLEXIBLE PAVEMENT DELETE EPOXY COATED TIE BARS.
- ④ LONGITUDINAL BARS, IF ENCOUNTERED IN THE EXISTING CURB OR CURB AND GUTTER, ARE NOT TO BE REPLACED. CUTTING AND REMOVING LONGITUDINAL BARS SHALL BE INCLUDED IN THE COST OF CURB OR CURB AND GUTTER REMOVAL AND REPLACEMENT.
- ⑤ THE COST OF HMA SURFACE REMOVAL IN THE EXISTING GUTTER FLAG SHALL BE INCLUDED IN THE COST OF THE CURB AND GUTTER REMOVAL AND REPLACEMENT.
- ⑥ THE REMOVAL AND REPLACEMENT OF THE EXISTING CURB OR CURB AND GUTTER SHALL BE DONE IN ACCORDANCE WITH THE APPLICABLE PORTIONS OF SECTION 440 AND 606 OF THE STANDARD SPECIFICATIONS.
- ⑦ THE LOCATIONS OF REMOVAL AND REPLACEMENT OF EXISTING CURB OR CURB AND GUTTER SHALL BE DETERMINED BY THE RESIDENT ENGINEER AT THE TIME OF CONSTRUCTION.

UNSUITABLE SUB-BASE MATERIAL TO BE REMOVED, IF DIRECTED BY THE ENGINEER, SHALL BE REPLACED WITH EITHER SUB-BASE GRANULAR MATERIAL, TYPE B OR ADDITIONAL THICKNESS OF CONCRETE.

REMOVAL AND REPLACEMENT 4" (100) OR LESS IS INCLUDED IN THE COST OF CURB OR CURB AND GUTTER REMOVAL AND REPLACEMENT.

REMOVAL AND REPLACEMENT IN EXCESS OF 4" (100) WILL BE PAID FOR IN ACCORDANCE WITH ARTICLE 109.04 OF THE STANDARD SPECIFICATIONS.

PROPOSED #6 (20) EPOXY COATED TIE BARS 24" (600) LONG AT 24" (600) CENTERS WILL NOT BE PAID FOR SEPARATELY. DELETE EPOXY COATED TIE BARS IF EXISTING TIE BARS ARE USUABLE AS DETERMINED BY THE ENGINEER. (SEE NOTE ③).

BASIS OF PAYMENT:
THIS WORK WILL BE PAID FOR AT THE CONTRACT UNIT PRICE PER FOOT FOR "CURB & GUTTER REMOVAL" AND "COMBINATION CONCRETE CURB & GUTTER" OF THE TYPE INDICATED.

ALL DIMENSIONS ARE IN INCHES (MILLIMETERS) UNLESS OTHERWISE SHOWN.

CURB OR CURB AND GUTTER REMOVAL AND REPLACEMENT


REVISIONS	
NO.	DATE
A. HOUSEH	03/11/94
R. SHAH	02/24/95
R. SHAH	03/02/95
R. SHAH	08/19/96
R. SHAH	09/12/96
R. SHAH	08/19/96
R. SHAH	10/03/96
A. ABBAS	03/21/97
M. GOMEZ	01/22/01
R. BORO	01/01/07

ILLINOIS DEPARTMENT OF TRANSPORTATION

CURB OR
CURB AND GUTTER
REMOVAL AND REPLACEMENT

SCALE: VERT. NONE
HORIZ. NONE
DRAWN BY
CHECKED BY
BD600-06 (BD-24)

PLOT DATE = 06/11/2007
 FILE NAME = K:\Users\jshah\My Documents\24.dgn
 PLOT SCALE = 0.0000 / IN.
 USER NAME = jshah-d


Frank Novotny & Associates, Inc.
 Civil Engineers/
 Municipal Consultants
 825 Midway Drive ♦ Willowbrook, IL ♦ 60527 ♦ Telephone: (630) 887-8640 ♦ Fax: (630) 887-0132
 Illinois Professional Design Firm No. 184-000928

PROJECT
VILLAGE OF LYONS, ILLINOIS
LAWDALE AVENUE LAPP RESURFACING
 SECTION 08-00058-00-RS

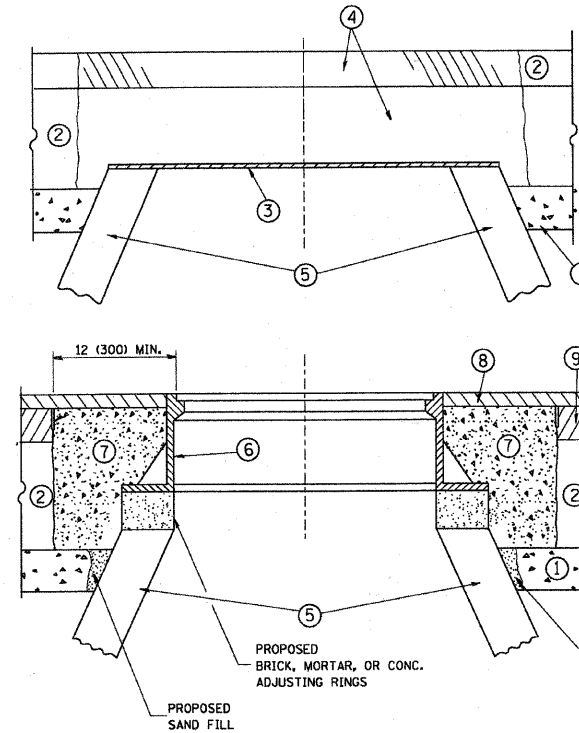
REVISIONS			
NO.	BY	DATE	DESCRIPTION

CURB OR
CURB AND GUTTER
REMOVAL AND REPLACEMENT

PROJECT NO. 06189	SCALE NONE	SHEET 12
DRAWN/DESIGNED JFP-JEP/JLC	DATE JUNE, 2009	OF 15
CHECKED/APPROVED JLC	FIELD BOOK NO. FILE	SHEETS

FAU RTE	SECTION	COUNTY	TOTAL SHEETS	SHEET NO.
FAU 2792	08-00058-00-RS	COOK	15	13
F.H.W.A. REG.	ILLINOIS	PROJECT	ARA-9003(067)	

CONTRACT NO. 63302



CONSTRUCTION PROCEDURES

- STAGE 1 (BEFORE PAVEMENT MILLING)**
- A) REMOVE A MINIMUM OF 12 (300) OF THE PAVEMENT FROM AROUND THE STRUCTURE.
 - B) REMOVE THE EXISTING FRAME AND LID FROM THE STRUCTURE.
 - C) COVER THE STRUCTURE OPENING WITH A 36 (900) DIAMETER METAL PLATE.
 - D) BACKFILL WITH CRUSHED STONE AND A MINIMUM 1/2 (40) THICK HMA SURFACE MIX APPROVED BY THE ENGINEER.

- STAGE 2 (AFTER PAVEMENT MILLING)**
- A) REMOVE THE HMA SURFACE MIX AND CRUSHED STONE.
 - B) INSTALL THE FRAME AND LID; ADJUST THE FRAME TO ITS FINAL SURFACE ELEVATION.
 - C) THE SURROUNDING SPACE SHALL BE FILLED WITH CLASS SI CONCRETE, OR HMA SURFACE COURSE OR HMA BINDER COURSE TO THE ELEVATION OF THE SURFACE OF THE EXISTING BASE COURSE OR THE BINDER COURSE.

THE PROCEDURE EXPLAINED ABOVE SHALL CONFORM TO THE APPLICABLE PORTIONS OF SECTIONS 353, 406, 602, AND 603 OF THE STANDARD SPECIFICATIONS.

LEGEND

- ① SUB-BASE GRANULAR MATERIAL
- ② EXISTING PAVEMENT
- ③ 36 (900) DIAMETER METAL PLATE
- ④ PROPOSED CRUSHED STONE AND HMA SURFACE MIX
- ⑤ EXISTING STRUCTURE
- ⑥ FRAME AND LID (SEE NOTES)
- ⑦ CLASS SI CONCRETE, HMA SURFACE COURSE OR HMA BINDER COURSE
- ⑧ PROPOSED HMA SURFACE COURSE
- ⑨ PROPOSED HMA BINDER COURSE

LOCATION OF STRUCTURES:

THE CONTRACTOR WILL BE REQUIRED TO KEEP A RECORD OF THE LOCATIONS OF THE BURIED STRUCTURES ACCORDING TO THE STATION AND DISTANCE LEFT OR RIGHT OF THE CENTERLINE OF PAVEMENT. UPON COMPLETION OF THE WORK, THE CONTRACTOR WILL DELIVER THE RECORD TO THE ENGINEER.

BASIS OF PAYMENT: THIS WORK WILL BE PAID FOR AT THE CONTRACT UNIT PRICE PER EACH FOR

NEW FRAMES AND LIDS, WHEN SPECIFIED, WILL BE PAID FOR SEPARATELY.

NOTES:

EXISTING BROKEN FRAMES AND LIDS SHALL BE REMOVED AND DISPOSED OF BY THE CONTRACTOR AND SHALL BE REPLACED AS DIRECTED BY THE ENGINEER. REPLACEMENT FRAMES AND LIDS WILL BE PAID FOR IN ACCORDANCE WITH ARTICLE 109.04 OF THE STANDARD SPECIFICATIONS UNLESS A SEPARATE PAY ITEM HAS BEEN PROVIDED.

IF THE EXISTING LIDS ARE OPEN, THE FRAME WILL BE ADJUSTED TO THE ELEVATION OF THE MILLED PAVEMENT SURFACE PRIOR TO THE MILLING OPERATION. THE FRAME WILL NOT BE REMOVED AND COVERED BY THE METAL PLATE.

CITY OF CHICAGO CASTINGS ARE THE PROPERTY OF THE CITY AND THE CONTRACTOR SHALL NOTIFY THE CITY FOR REMOVAL AND DISPOSITION OF THE CASTINGS.

THE METAL PLATE USED TO COVER THE STRUCTURE SHALL REMAIN THE PROPERTY OF THE CONTRACTOR.

WHEN STRUCTURES ARE TO BE ADJUSTED OR RECONSTRUCTED, THE LOWERING AND RAISING OF THE FRAMES AND LIDS WILL NOT BE PAID FOR SEPARATELY BUT WILL BE INCLUDED IN THE COST OF THE CORRESPONDING PAY ITEM.

DETAILS FOR FRAMES AND LIDS ADJUSTMENT WITH MILLING

ALL DIMENSIONS ARE IN INCHES (MILLIMETERS) UNLESS OTHERWISE SHOWN

REVISIONS	
NO.	DATE
R. SHAH	10/25/94
R. SHAH	01/30/95
R. SHAH	03/10/95
A. ABBAS	03/21/97
R. WIEDEMAN	05/14/04
R. BORD	01/01/07

ILLINOIS DEPARTMENT OF TRANSPORTATION
DETAILS FOR FRAMES AND LIDS ADJUSTMENT WITH MILLING

SCALE: VERT. NONE
 HORIZ. NONE

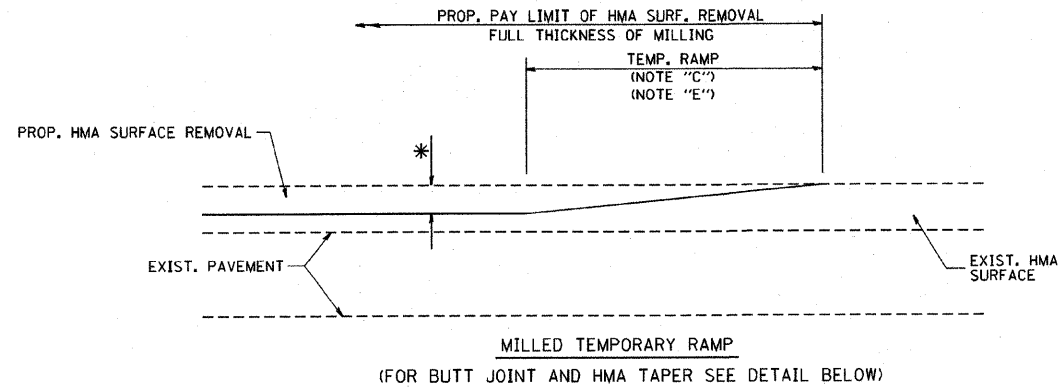
DRAWN BY
 CHECKED BY
 BD600-03 (BD-8)

PLT DATE = 01/01/07
 FILE NAME = K:\GIS\DATA\N0808.dgn
 PLOT SCALE = 0.000000 / IN.
 USER NAME = bauer-cl

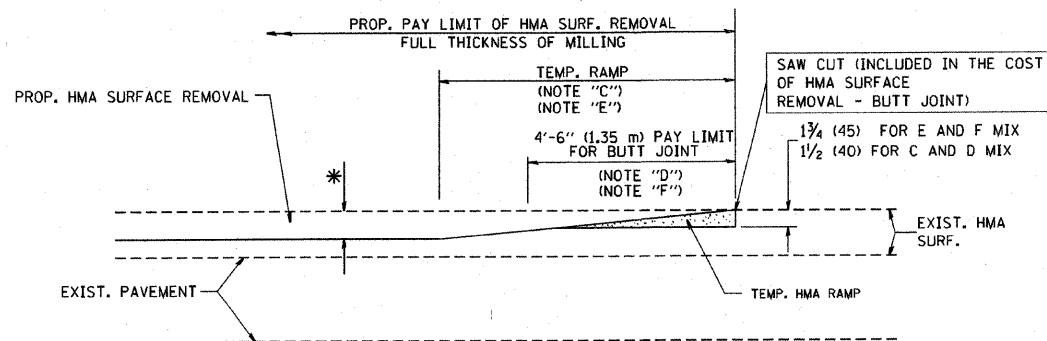
REVISIONS			
NO.	BY	DATE	DESCRIPTION

FAU RTE	SECTION	COUNTY	TOTAL SHEETS	SHEET NO.
FAU 2792	08-00058-00-RS	COOK	15	14
F.H.W.A. REG.	ILLINOIS PROJECT	ARA-9003(067)		

CONTRACT NO. 63302

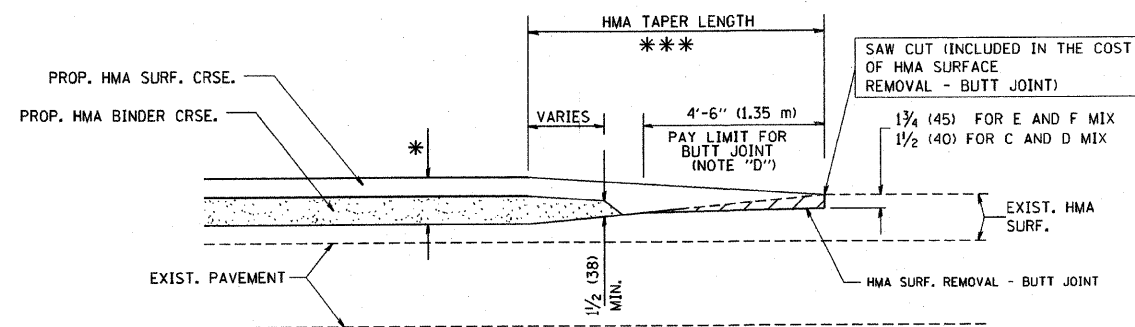


OPTION 1

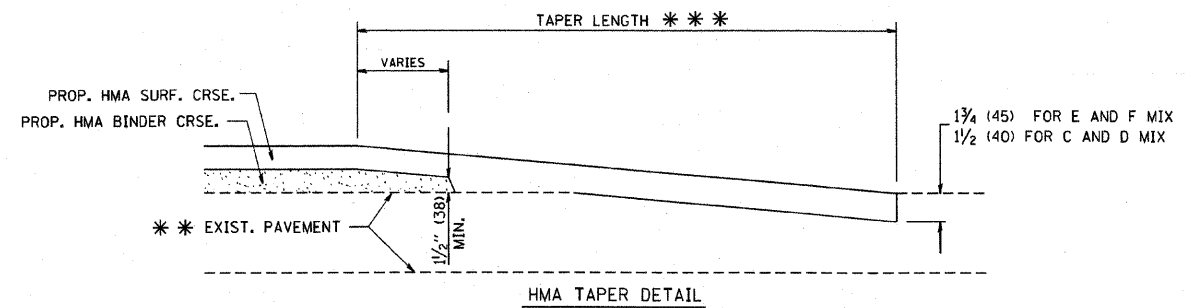
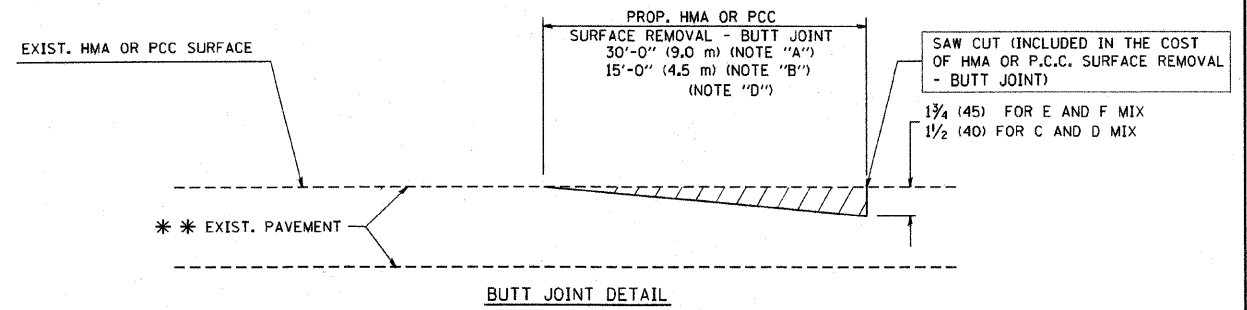


OPTION 2

TYPICAL TEMPORARY RAMP



TYPICAL BUTT JOINT AND HMA TAPER FOR MILLING AND RESURFACING



TYPICAL BUTT JOINT AND HMA TAPER FOR RESURFACING ONLY

*** PC CONCRETE, HMA OR HMA RESURFACED PAVEMENT.

NOTES

- A: MAINLINE ROADWAYS AND MAJOR SIDE ROADS.
 - B: MINOR SIDE ROADS.
 - C: THE TEMP. RAMP SHALL BE CONSTRUCTED IMMEDIATELY UPON REMOVAL OF THE EXISTING HMA SURFACE.
 - D: THE BUTT JOINT SHALL BE CONSTRUCTED IMMEDIATELY PRIOR TO PLACING THE PROPOSED HMA COURSES.
 - E: TAPER THE TEMP. RAMP AT A RATE OF 3'-0" (900 mm) PER 1 INCH (25 mm) OF MILLING THICKNESS.
 - F: INSTALLATION AND REMOVAL OF THE 4'-6" (1.35 m) TEMP. RAMP IS INCLUDED IN COST OF HMA SURFACE REMOVAL - BUTT JOINT
 - G: SEE ARTICLE 406.08 AND 406.14 OF THE STANDARD SPECIFICATIONS FOR "HMA AND/OR PCC SURFACE REMOVAL, BUTT JOINT".
- * SEE TYPICAL SECTIONS FOR MILLING THICKNESS.
- *** 20'-0" (6.1 m) PER 1 (25) RESURFACING (NOTE "A")
10'-0" (3.0 m) PER 1 (25) RESURFACING (NOTE "B")

ALL DIMENSIONS ARE IN INCHES (MILLIMETERS) UNLESS OTHERWISE SHOWN.

BASIS OF PAYMENT:

THE BUTT JOINT WILL BE PAID FOR AT THE CONTRACT UNIT PRICE PER SQUARE YARD (SQUARE METER) FOR "HOT-MIX ASPHALT SURFACE REMOVAL - BUTT JOINT" OR FOR "PORTLAND CEMENT CONCRETE SURFACE REMOVAL - BUTT JOINT".

REVISIONS	
NAME	DATE
M. DE YONG	6-13-90
M. DE YONG	7-3-90
M. DE YONG	3-27-92
R. SHAH	09/09/94
R. SHAH	10/25/94
A. ABBAS	03/21/97
M. GOMEZ	04/06/01
R. BORG	01/01/07

ILLINOIS DEPARTMENT OF TRANSPORTATION

BUTT JOINT AND HMA TAPER DETAILS

SCALE: VERT. NONE
HORIZ.

DRAWN BY

CHECKED BY

BD400-05 (VI-BD32)

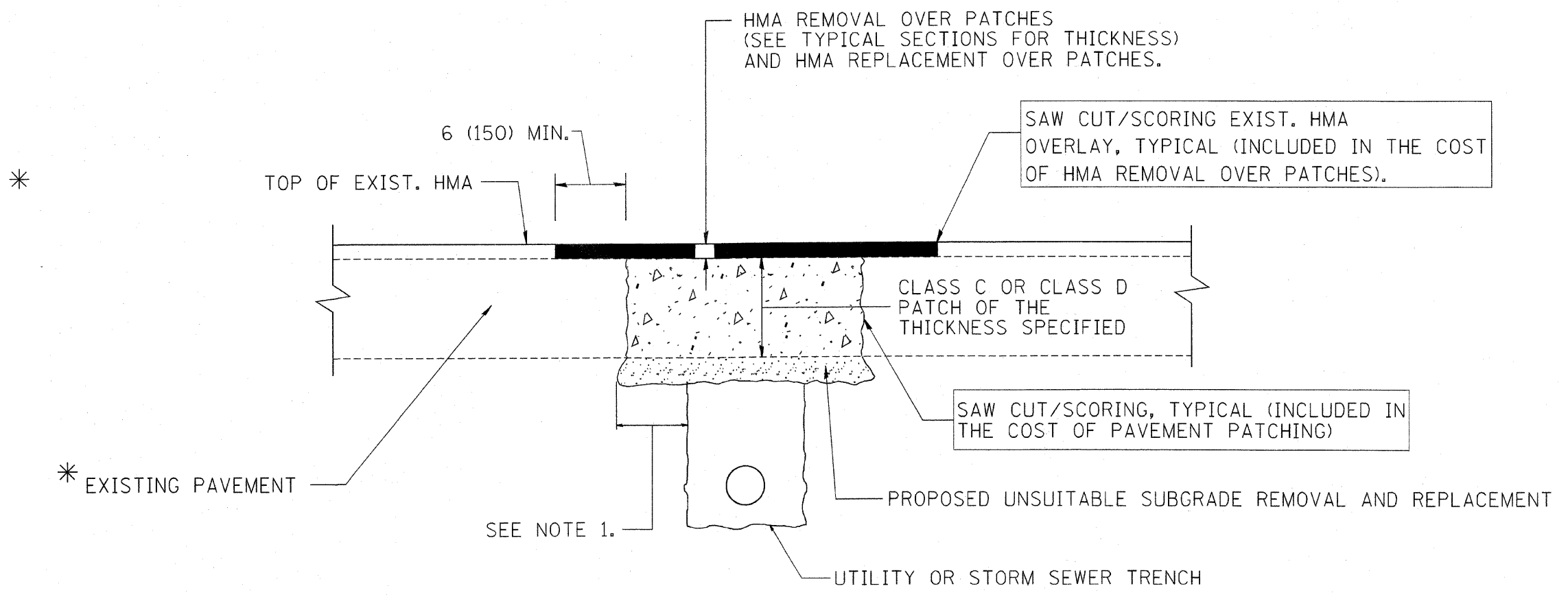
PLOT DATE = 2/5/2007
FILE NAME = E:\projects\08-00058-00-RS.dwg
PLOT SCALE = 50.0000 / IN.
USER NAME = bward

REVISIONS			
NO.	BY	DATE	DESCRIPTION

BUTT JOINT AND HMA TAPER DETAILS

PROJECT NO. 06189	SCALE NONE	SHEET 14 OF 15 SHEETS
DRAWN/DESIGNED JFP-JEP/JLC	DATE JUNE, 2009	
CHECKED/APPROVED JLC	FIELD BOOK NO. FILE	

FAU RTE	SECTION	COUNTY	TOTAL SHEETS	SHEET NO.
FAU 2792	08-00058-00-RS	COOK	15	15
F.H.W.A. REG.	ILLINOIS PROJECT	ARA-9003(067)	CONTRACT NO. 63302	



* SEE TYPICAL SECTIONS FOR THICKNESS AND MATERIALS

NOTES:

1. THE WIDTH OF THE FULL DEPTH PATCH OVER A TRENCH SHALL BE 12 (300) WIDER ON EACH SIDE OF THE TRENCH.
2. FOR METHOD OF MEASUREMENT AND BASIS OF PAYMENT, SEE RECURRING SPECIAL PROVISION "PATCHING WITH HOT-MIX ASPHALT OVERLAY REMOVAL".

SEQUENCE OF CONSTRUCTION

1. REMOVE THE EXISTING HMA MATERIAL OVER THE AREA TO BE PATCHED.
2. REMOVE AND REPLACE FULL DEPTH PATCHES
3. REPLACE HMA MATERIAL OVER THE AREA TO BE PATCHED.

ALL DIMENSIONS ARE IN INCHES (MILLIMETERS) UNLESS OTHERWISE SHOWN.

REVISIONS	
NO.	DATE
R. SHAH	10/25/94
R. SHAH	01/14/95
R. SHAH	03/23/95
R. SHAH	04/24/95
A. HOUSEH	03/15/96
A. ABBAS	03/21/97
A. ABBAS	01/20/98
ART ABBAS	04/27/98
R. BORO	01/01/07
R. BORO	09/04/07

ILLINOIS DEPARTMENT OF TRANSPORTATION
PAVEMENT PATCHING FOR HMA SURFACED PAVEMENT
 SCALE: VERT. NONE
 HORIZ. NONE
 DRAWN BY
 CHECKED BY
 BD400-04 (BD-22)

PLOT DATE = 9/4/2007
 FILE NAME = c:\projects\lawn\lawn02.dwg
 PLOT SCALE = 1/8" = 1' IN.
 USER NAME = bawrd.

REVISIONS			
NO.	BY	DATE	DESCRIPTION