

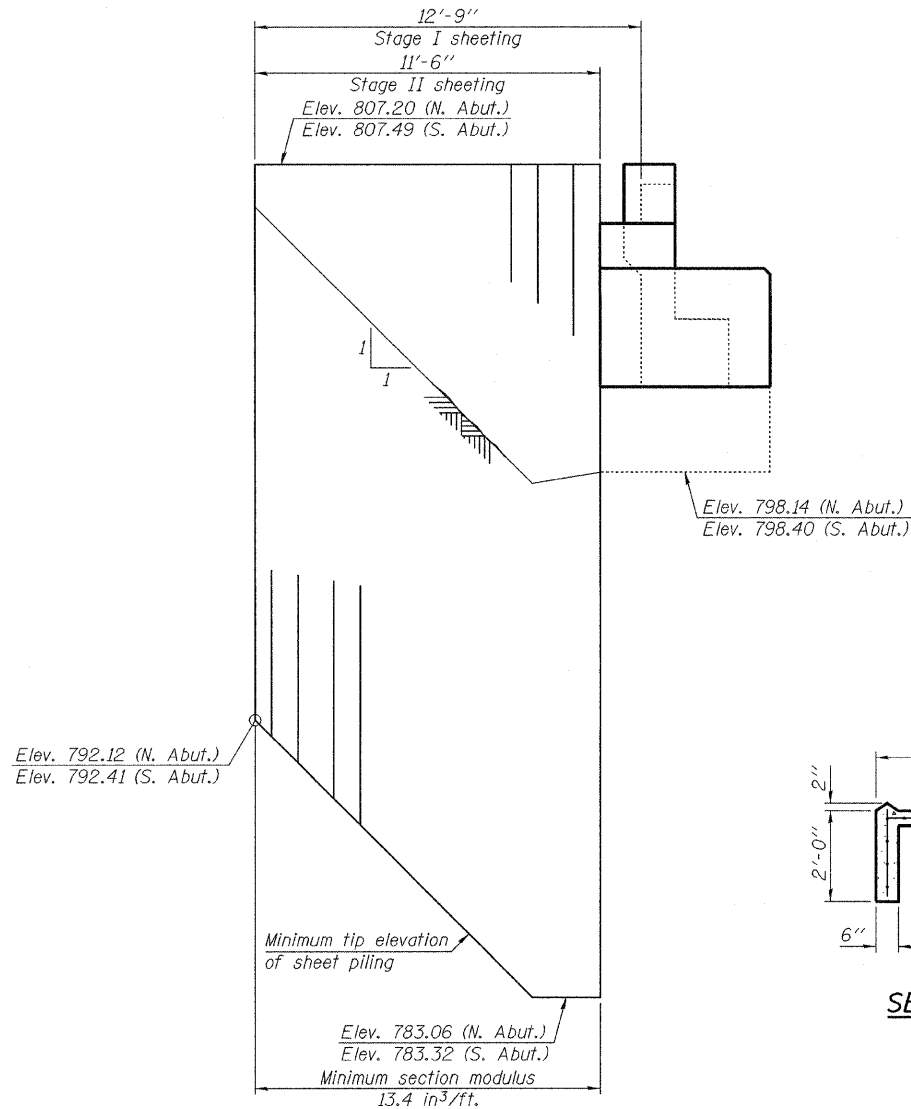
SUMMARY OF QUANTITIES

| CODE NUMBER | ITEM | UNIT | TOTAL QUANTITY | ROADWAY | STRUCTURES | STRUCTURES |
|---------------------|---|------------------|----------------|---------|--------------|----------------|
| | | | | I000 | X220-2A | X271-2A |
| 50200100 | STRUCTURE EXCAVATION | CU YD | 546 | | 170 | 376 |
| 50300100 | FLOOR DRAINS | EACH | 24 | | | 24 |
| 50300225 | CONCRETE STRUCTURES | CU YD | 289.3 | | 106.5 | 182.8 |
| 50300255 | CONCRETE SUPERSTRUCTURE | CU YD | 1578.2 | | 915.8 | 662.4 |
| 50300260 | BRIDGE DECK GROOVING | SQ YD | 3171 | | 1429 | 1742 |
| 50300280 | CONCRETE ENCASEMENT | CU YD | 8.4 | | 8.4 | |
| 50300300 | PROTECTIVE COAT | SQ YD | 3863 | | 1746 | 2117 |
| 50500405 | FURNISHING AND ERECTING STRUCTURAL STEEL | POUND | 15,980 | | 6,060 | 9,920 |
| 50500505 | STUD SHEAR CONNECTORS | EACH | 6134 | | | 6134 |
| Z0031200 | JACKING AND CRIBBING | EACH | 28 | | | 28 |
| 50600600 | CLEANING AND PAINTING STEEL BRIDGE NO. 1 | L SUM | 1 | | | 1 |
| 50600700 | CLEANING AND PAINTING STEEL BRIDGE NO. 2 | L SUM | 1 | | | 1 |
| 50606401 | CONTAINMENT AND DISPOSAL OF LEAD PAINT CLEANING RESIDUES NO. 1 | L SUM | 1 | | | 1 |
| 50606402 | CONTAINMENT AND DISPOSAL OF LEAD PAINT CLEANING RESIDUES NO. 2 | L SUM | 1 | | | 1 |
| 50800205 | REINFORCEMENT BARS, EPOXY COATED | POUND | 377,700 | | 209,390 | 168,310 |
| 50800515 | BAR SPLICERS | EACH | 2359 | | 870 | 1489 |
| 51100100 | SLOPE WALL 4 INCH | SQ YD | 2013 | | 800 | 1213 |
| 51201400 | FURNISHING STEEL PILES HP10X42 | FOOT | 1200 | | 1200 | |
| 51202305 | DRIVING PILES | FOOT | 1200 | | 1200 | |
| 51205200 | TEMPORARY SHEET PILING | SQ FT | 1487 | | 518 | 969 |
| 51500100 | NAME PLATES | EACH | 4 | | 2 | 2 |
| 52000110 | PREFORMED JOINT STRIP SEAL | FOOT | 176.5 | | | 176.5 |
| 52100010 | ELASTOMERIC BEARING ASSEMBLY, TYPE I | EACH | 46 | | 18 | 28 |
| 52100520 | ANCHOR BOLTS, 1" | EACH | 128 | | 72 | 56 |
| 542D5473 | PIPE CULVERTS, CLASS D, TYPE 1 EQUIVALENT ROUND-SIZE 18" | FOOT | 108 | 108 | | |
| 54213447 | END SECTIONS 12" | EACH | 4 | 4 | | |
| 54215763 | METAL END SECTIONS, EQUIVALENT ROUND-SIZE 18" | EACH | 4 | 4 | | |
| 58700300 | CONCRETE SEALER | SQ FT | 814 | | | 814 |
| 59100100 | GEOCOMPOSITE WALL DRAIN | SQ YD | 213 | | 68 | 145 |
| 60108000 | PIPE UNDERDRAINS 12" | FOOT | 115 | 115 | | |
| 60109580 | PIPE UNDERDRAINS FOR STRUCTURES 4" | FOOT | 591 | | 263 | 328 |
| 60900115 | TYPE B INLET BOX, STANDARD 609001 | EACH | 2 | 2 | | |

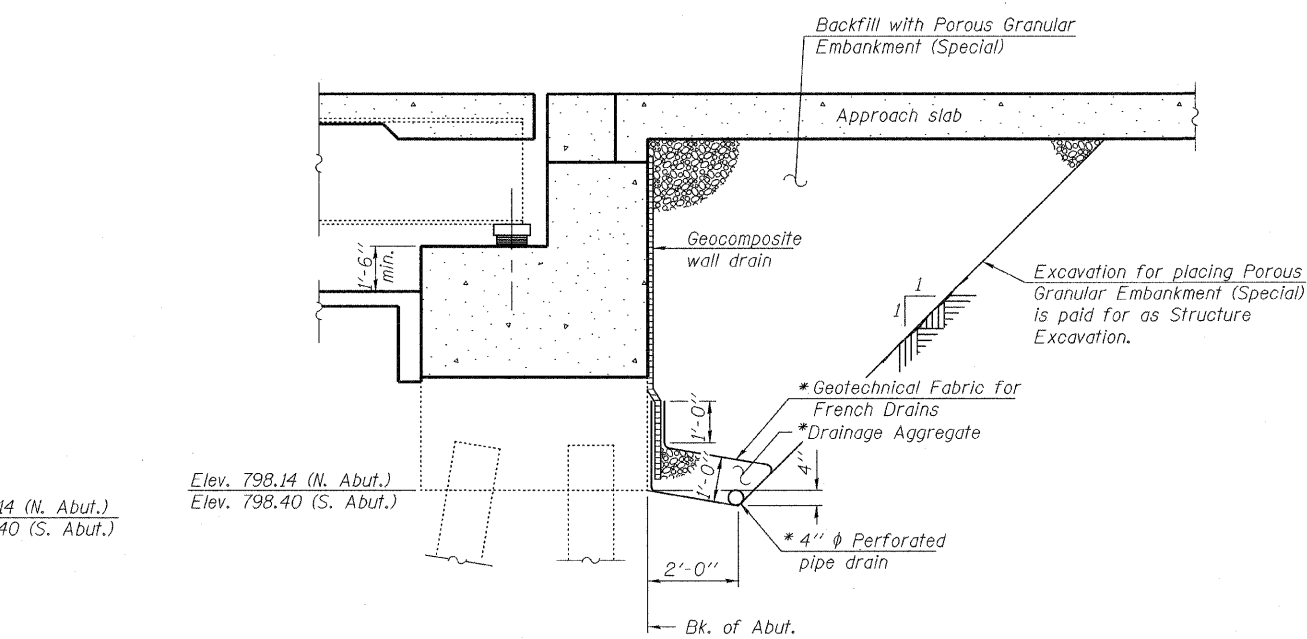
* SPECIALTY ITEM

Rev. 10-14-09

STATE OF ILLINOIS
DEPARTMENT OF TRANSPORTATION



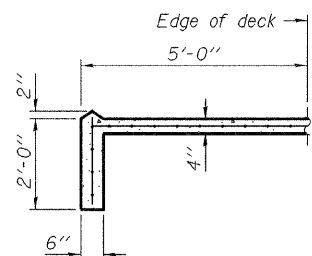
TEMPORARY SHEET PILING



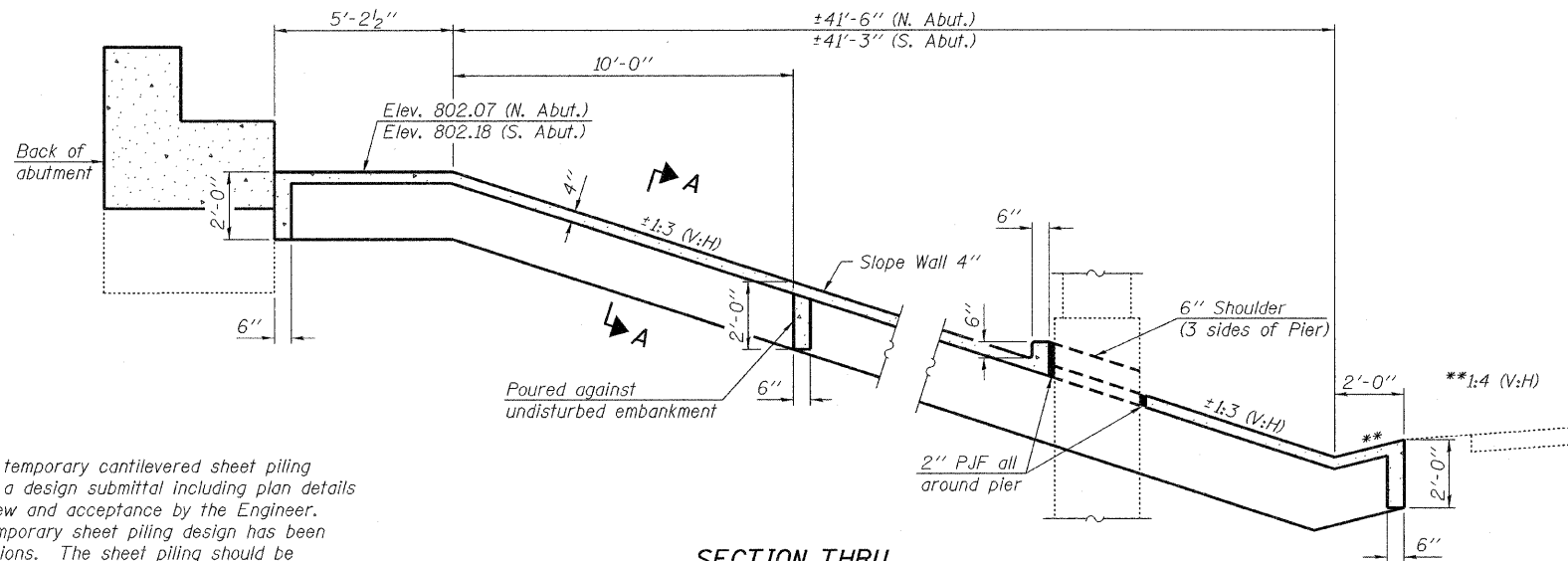
SECTION THRU ABUTMENT

(Horiz. dim \odot Rt. L's)

*Included in the cost of Pipe Underdrains for Structures.



SECTION A-A



SECTION THRU CONCRETE SLOPEWALL

(Horiz. dim \odot Rt. L's)

TOTAL BILL OF MATERIAL

| ITEM | UNIT | SUPER | SUB | TOTAL |
|--|---------|-------|------|-------|
| Porous Granular Embankment (Special) | Cu. Yd. | | 161 | 161 |
| Concrete Removal | Cu. Yd. | | 40 | 40 |
| Slope Wall Removal | Sq. Yd. | | 600 | 600 |
| Removal of Existing Concrete Deck | Each | 1 | | 1 |
| Protective Shield | Sq. Yd. | 235 | | 235 |
| Structure Excavation | Cu. Yd. | | 186 | 186 |
| Floor Drains | Each | 12 | | 12 |
| Concrete Structures | Cu. Yd. | | 91.5 | 91.5 |
| Concrete Superstructure | Cu. Yd. | 330.9 | | 330.9 |
| Bridge Deck Grooving | Sq. Yd. | 871 | | 871 |
| Protective Coat | Sq. Yd. | 1060 | | 1060 |
| Furnishing and Erecting Structural Steel | Pound | 4960 | | 4960 |
| Stud Shear Connectors | Each | 3131 | | 3131 |
| Cleaning and Painting Steel Bridge No. 1 | L. Sum | 1 | | 1 |
| Containment and Disposal of Lead Paint Cleaning Residues No. 1 | L. Sum | 1 | | 1 |
| Reinforcement Bars, Epoxy Coated | Pound | 78230 | 6020 | 84250 |
| Bar Splicers | Each | 625 | 124 | 749 |
| Slope Wall 4 Inch | Sq. Yd. | | 613 | 613 |
| Temporary Sheet Piling | Sq. Ft. | | 486 | 486 |
| Name Plates | Each | 1 | | 1 |
| Preformed Joint Strip Seal | Foot | 88.5 | | 88.5 |
| Elastomeric Bearing Assembly, Type I | Each | | 14 | 14 |
| Anchor Bolts, 1" | Each | | 28 | 28 |
| Concrete Sealer | Sq. Ft. | | 410 | 410 |
| Geocomposite Wall Drain | Sq. Yd. | | 74 | 74 |
| Pipe Underdrains for Structures, 4" | Foot | | 164 | 164 |
| Jacking and Cribbing | Each | | 14 | 14 |

GENERAL DETAILS
STRUCTURE NO. 037-0017 (S.B.)

| SHEET NO. 2 | F.A.I. RTE. | SECTION | COUNTY | TOTAL SHEETS | SHEET NO. |
|---------------------------|-------------|----------|--------|--------------|--------------------|
| 27 SHEETS | 74 | 37-4HB-1 | HENRY | 148 | 68 |
| | | | | | CONTRACT NO. 64264 |
| ILLINOIS FED. AID PROJECT | | | | | |

Notes

If the Contractor chooses to alter the temporary cantilevered sheet piling design requirements shown on the plans, a design submittal including plan details and calculations will be required for review and acceptance by the Engineer.

Due to the lack of boring data, the temporary sheet piling design has been developed to account for most soil conditions. The sheet piling should be monitored for excessive deflection and the Engineer contacted if soft or loose soils are encountered.

The Contractor shall connect the first sheet to the existing abutment wall to ensure stability of sheets driven to the top of the existing footing. This connection shall be reviewed and accepted by the Engineer and included in the cost for Temporary Sheet Piling.

All drainage system components shall extend parallel to the abutment back wall until they intersect the wingwalls. The pipe shall extend under the wingwall, if necessary, until intersecting the side slopes. The pipes shall drain into concrete headwalls. (See Article 601.05 of the Standard Specifications and Highway Standard 601101).

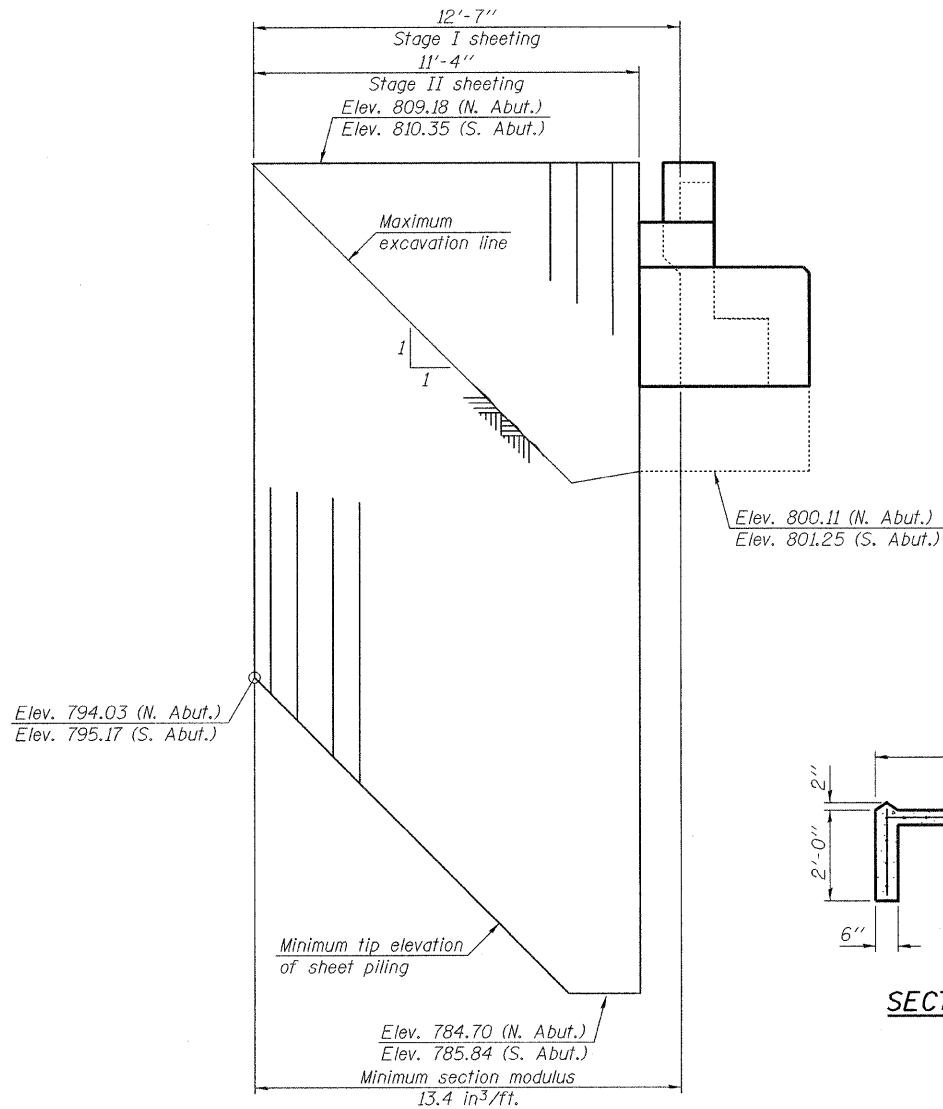
Slopedwall shall be reinforced with welded wire fabric, 6" x 6" - W4.0 x W4.0, weighing 58 lbs. per 100 sq. ft.

Rev. 10-14-09

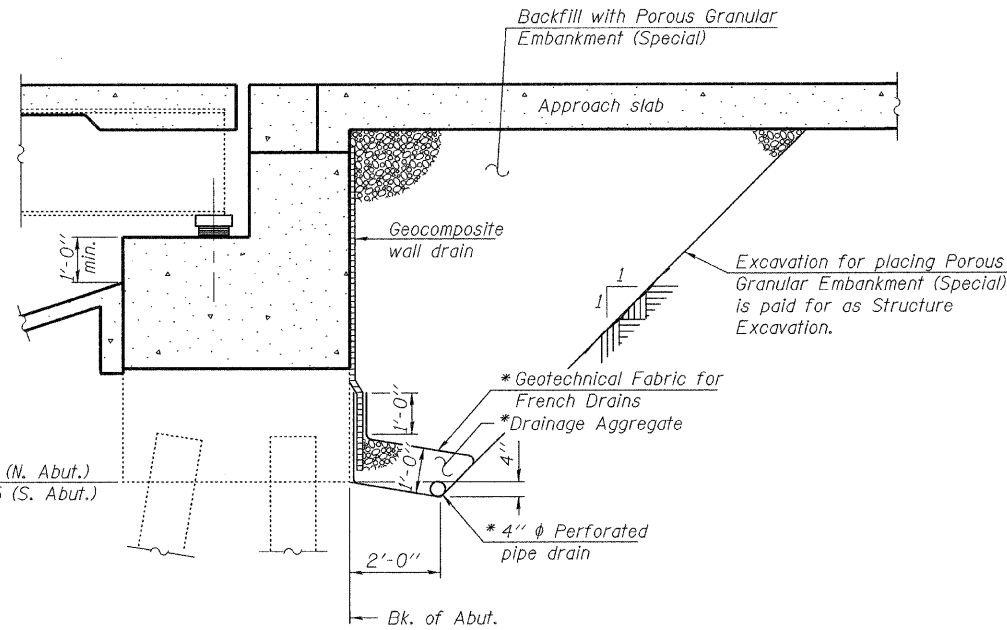
DESIGNED Nicholas R. Barnett
CHECKED Michael D. Rolape
DRAWN Michael B. Mossman
CHECKED N.R.B./M.D.R./G.R.A.

September 29, 2009
EXAMINED Thomas J. Damagalki
PASSED Ralph E. Anderson
ENGINEER OF BRIDGES AND STRUCTURES

STATE OF ILLINOIS
DEPARTMENT OF TRANSPORTATION



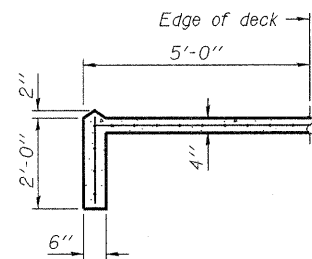
TEMPORARY SHEET PILING



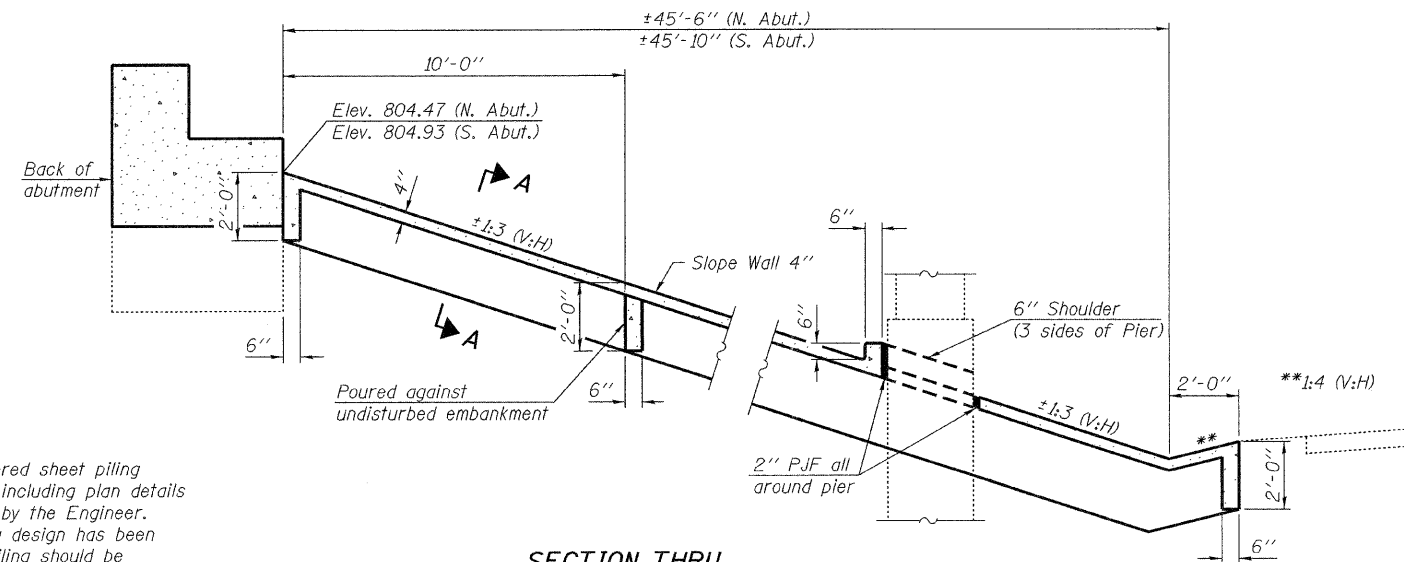
SECTION THRU ABUTMENT

(Horiz. dim \odot Rt. L's)

*Included in the cost of Pipe Underdrains for Structures.



SECTION A-A



SECTION THRU CONCRETE SLOPEWALL

TOTAL BILL OF MATERIAL

| ITEM | UNIT | SUPER | SUB | TOTAL |
|--|---------|--------|-------|--------|
| Porous Granular Embankment (Special) | Cu. Yd. | | 159 | 159 |
| Concrete Removal | Cu. Yd. | | 38 | 38 |
| Slope Wall Removal | Sq. Yd. | | 605 | 605 |
| Removal of Existing Concrete Deck | Each | 1 | | 1 |
| Protective Shield | Sq. Yd. | 235 | | 235 |
| Structure Excavation | Cu. Yd. | | 190 | 190 |
| Floor Drains | Each | 12 | | 12 |
| Concrete Structures | Cu. Yd. | | 91.3 | 91.3 |
| Concrete Superstructure | Cu. Yd. | 331.5 | | 331.5 |
| Bridge Deck Grooving | Sq. Yd. | 871 | | 871 |
| Protective Coat | Sq. Yd. | 1057 | | 1057 |
| Furnishing and Erecting Structural Steel | Pound | 4960 | | 4960 |
| Stud Shear Connectors | Each | 3003 | | 3003 |
| Cleaning and Painting Steel Bridge No. 2 | L. Sum | | | 1 |
| Containment and Disposal of Lead Paint Cleaning Residues No. 2 | L. Sum | | | 1 |
| Reinforcement Bars, Epoxy Coated | Pound | 78,040 | 6,020 | 84,060 |
| Bar Splacers | Each | 630 | 110 | 740 |
| Slope Wall 4 Inch | Sq. Yd. | | 600 | 600 |
| Temporary Sheet Piling | Sq. Ft. | | 483 | 483 |
| Name Plates | Each | 1 | | 1 |
| Preformed Joint Strip Seal | Foot | 88 | | 88 |
| Elastomeric Bearing Assembly, Type I | Each | | 14 | 14 |
| Anchor Bolts, 1" | Each | | 28 | 28 |
| Concrete Sealer | Sq. Ft. | | 404 | 404 |
| Geocomposite Wall Drain | Sq. Yd. | | 71 | 71 |
| Pipe Underdrains for Structures, 4" | Foot | | 164 | 164 |
| Jacking and Cribbing | Each | | 14 | 14 |

Notes

If the Contractor chooses to alter the temporary cantilevered sheet piling design requirements shown on the plans, a design submittal including plan details and calculations will be required for review and acceptance by the Engineer.

Due to the lack of boring data, the temporary sheet piling design has been developed to account for most soil conditions. The sheet piling should be monitored for excessive deflection and the Engineer contacted if soft or loose soils are encountered.

The Contractor shall connect the first sheet to the existing abutment wall to ensure stability of sheets driven to the top of the existing footing. This connection shall be reviewed and accepted by the Engineer and included in the cost for Temporary Sheet Piling.

All drainage system components shall extend parallel to the abutment back wall until they intersect the wingwalls. The pipe shall extend under the wingwall, if necessary, until intersecting the side slopes. The pipes shall drain into concrete headwalls. (See Article 601.05 of the Standard Specifications and Highway Standard 601101).

Slope wall shall be reinforced with welded wire fabric, 6" x 6" - W4.0 x W4.0, weighing 58 lbs. per 100 sq. ft.

GENERAL DETAILS
STRUCTURE NO. 037-0018 (N.B.)

| | |
|----------|----------------------|
| DESIGNED | Michael D. Rolape |
| CHECKED | Nicholas R. Barnett |
| DRAWN | Michael B. Mossman |
| CHECKED | M.D.R./N.R.B./G.R.A. |

| | | |
|----------|--------------------|---------------------|
| EXAMINED | September 29, 2009 | Thomas J. Demagalki |
| PASSED | | Ralph E. Anderson |

| SHEET NO. 2 | F.A.I. RTE. | SECTION | COUNTY | TOTAL SHEETS | SHEET NO. |
|---------------------------|-------------|----------|--------------------|--------------|-----------|
| 27 SHEETS | 74 | 37-4HB-1 | HENRY | 148 | 95 |
| | | | CONTRACT NO. 64264 | | |
| ILLINOIS FED. AID PROJECT | | | | | |

Rev. 10-14-09