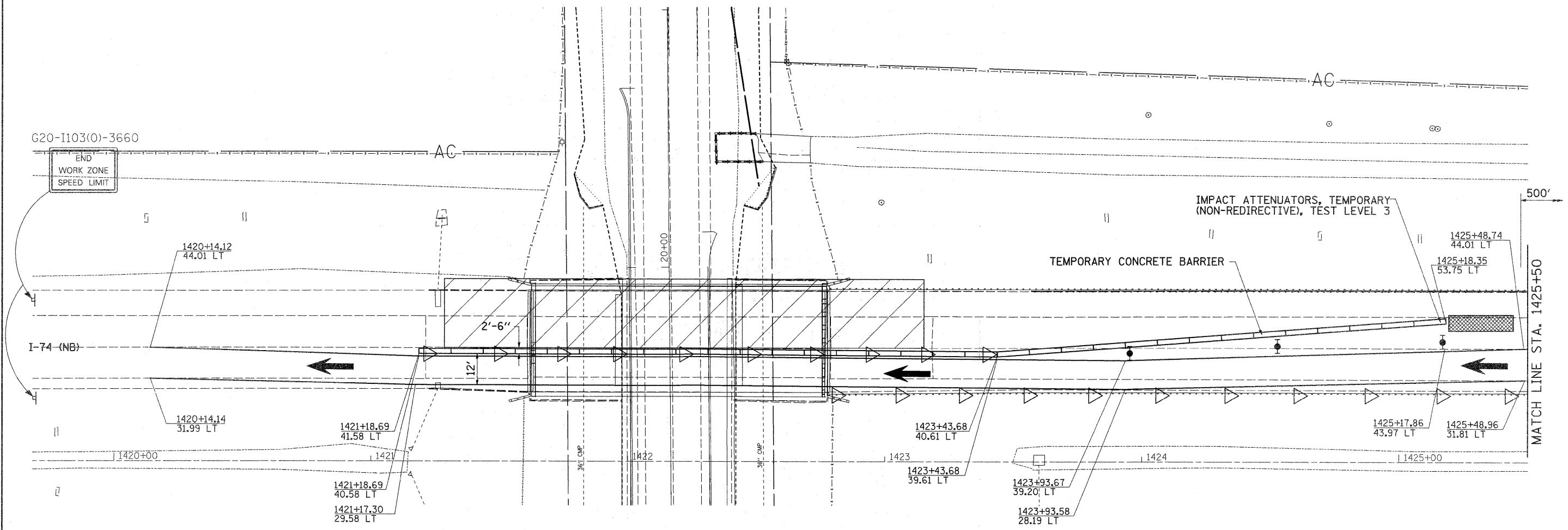


STAGE 2 SN 037-0016



STAGE 2 NOTES

1. USE STANDARD 701402 FOR LANE CLOSURE. SEE STANDARD 701400 FOR APPROACH SIGNING AND DEVICES NOT SHOWN IN PLANS.
2. REMOVAL AND REPLACEMENT OF THE SUPERSTRUCTURE ON THE EAST SIDE OF BRIDGE (SN 037-0016)

SYMBOLS

- = ARROW BOARD
- = WORK AREA
- = SIGN
- = DIRECTION INDICATOR BARRICADE WITH STEADY BURN MONODIRECTIONAL LIGHT
- = TYPE II BARRICADE, DRUM, OR VERTICAL BARRICADE WITH STEADY BURN MONODIRECTIONAL LIGHT
- = MONODIRECTIONAL BARRIER WALL/GUARDRAIL MARKER
- = IMPACT ATTENUATOR

FILE NAME =	USER NAME = cushmanbw	DESIGNED -	REVISED -	STATE OF ILLINOIS DEPARTMENT OF TRANSPORTATION	STAGE 2 (SN 037-0016) STAGING PLAN SHEETS	F.A.I. RTE. 74	SECTION 37-(4HB,4HB-1,4HB-2/D	COUNTY HENRY	TOTAL SHEETS 148	SHEET NO. 27		
ci:\pw_work\p\sidet\cushmanbw\dms36777\02298-shit-staging.dgn	02298-shit-staging.dgn	DRAWN -	REVISED -			SCALE:	SHEET NO. OF SHEETS STA. TO STA.	ILLINOIS FED. AID PROJECT				
PLOT SCALE = 20.0000' / IN.		CHECKED -	REVISED -									
PLOT DATE = Wed Aug 05 13:11:44 2009		DATE -	REVISED -			CONTRACT NO. 64264						