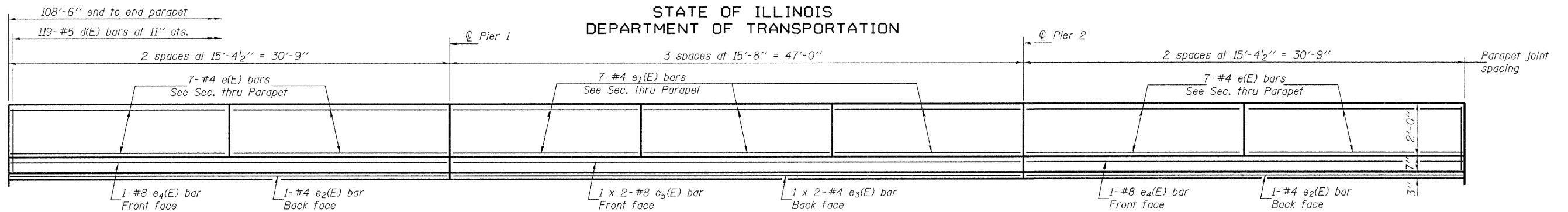
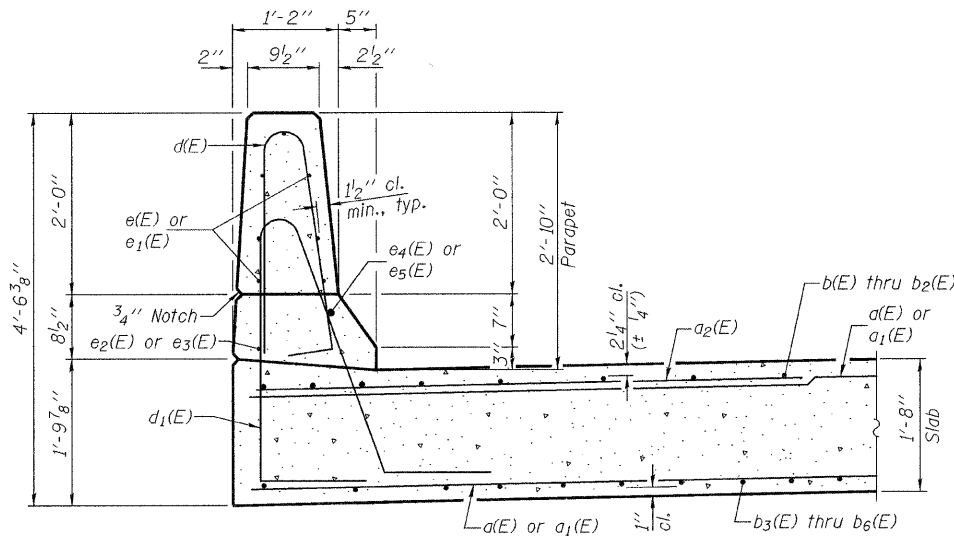


STATE OF ILLINOIS  
DEPARTMENT OF TRANSPORTATION

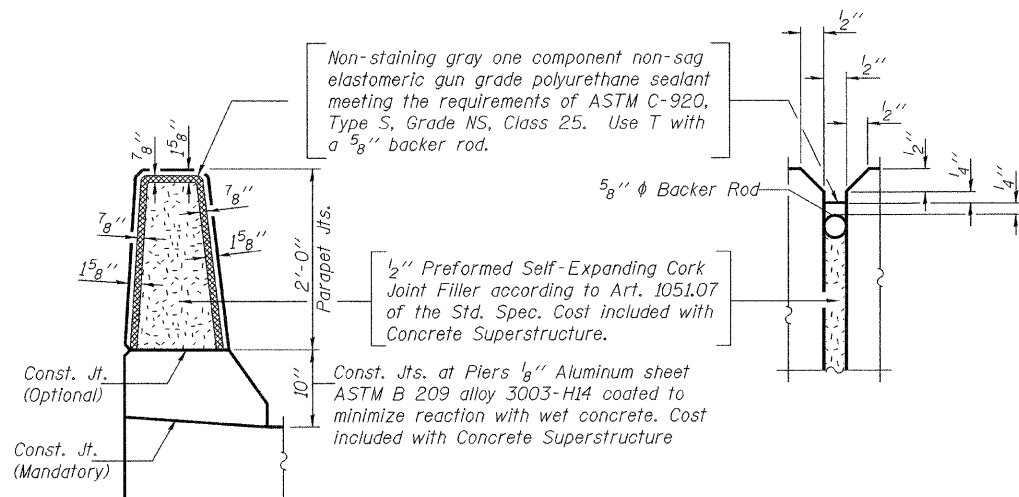


**INSIDE ELEVATION OF PARAPET**

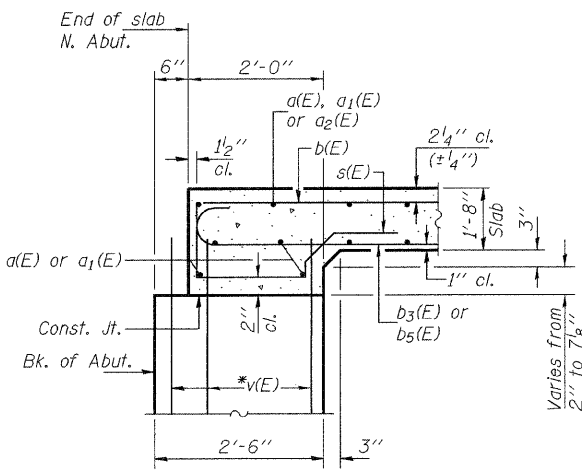
(East parapets - Looking east; West parapets similar)



**SECTION THRU PARAPET**

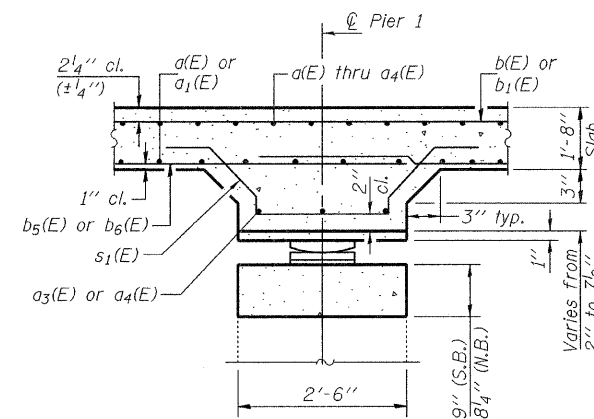


**PARAPET JOINT DETAILS**

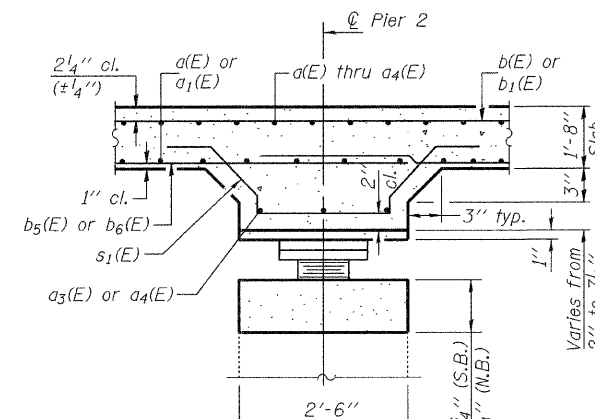


**SECTION A-A**

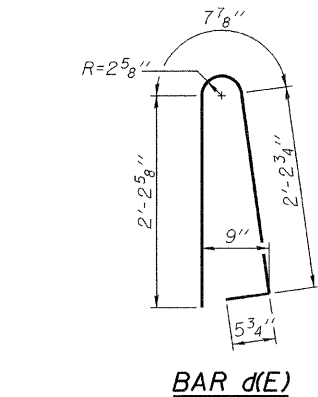
\*v(E) bars billed with abutments.



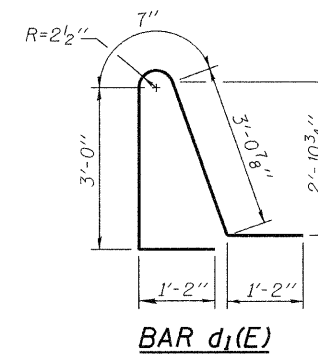
**SECTION B-B**



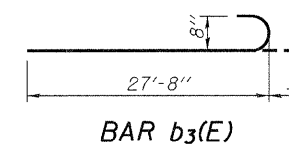
**SECTION C-C**



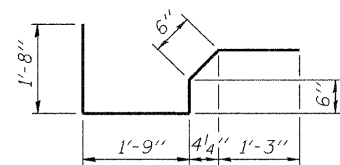
**BAR d(E)**



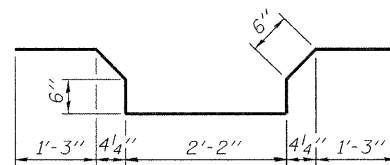
**BAR d1(E)**



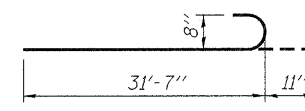
**BAR b3(E)**



**BAR s(E)**



**BAR s1(E)**



**BAR b5(E)**

**MIN. BAR LAPS**

(Parapet)  
#4 bar = 1'-4"  
#8 bar = 3'-5"

**TWO SUPERSTRUCTURE  
BILL OF MATERIAL  
(S.B. & N.B.)**

Bar	No.	Size	Length	Shape
a(E)	354	#5	19'-3"	—
a1(E)	354	#5	23'-3"	—
a2(E)	292	#6	6'-0"	—
a3(E)	24	#6	19'-3"	—
a4(E)	24	#6	23'-3"	—
b(E)	192	#9	45'-8"	—
b1(E)	184	#9	27'-6"	—
b2(E)	96	#7	30'-3"	—
b3(E)	168	#8	28'-7"	—
b4(E)	84	#8	36'-3"	—
b5(E)	176	#8	32'-6"	—
b6(E)	88	#8	48'-0"	—
d(E)	476	#5	5'-7"	—
d1(E)	476	#5	9'-0"	—
e(E)	112	#4	15'-1"	—
e1(E)	84	#4	15'-5"	—
e2(E)	8	#4	30'-6"	—
e3(E)	8	#4	24'-1"	—
e4(E)	8	#8	30'-6"	—
e5(E)	8	#8	25'-1"	—
s(E)	176	#5	5'-8"	—
s1(E)	176	#5	6'-8"	—
Reinforcement Bars, Epoxy Coated		Pound	133290	
Concrete Superstructure		Cu. Yds.	649.4	

Bars indicated thus 1 x 4-#8 etc. indicates 1 line of bars with 4 lengths per line.

**SUPERSTRUCTURE DETAILS  
STRUCTURE NO. 037-0015 (S.B.)  
STRUCTURE NO. 037-0016 (N.B.)**

DESIGNED	Nicholas R. Barnett
CHECKED	Michael D. Rolape
DRAWN	h.t. duong
CHECKED	NRB/MDR/GRA

EXAMINED	September 29, 2009
PASSED	Thomas J. Domagalak ENGINEER OF BRIDGE DESIGN Ralph E. Anderson ENGINEER OF BRIDGES AND STRUCTURES

SHEET NO. 14 30 SHEETS	F.A.I. RTE.	SECTION	COUNTY	TOTAL SHEETS	SHEET NO.
	74	37-4HB	HENRY	148	50
FED. ROAD DIST. NO. _ ILLINOIS			FED. AID PROJECT		
			CONTRACT NO. 64264		