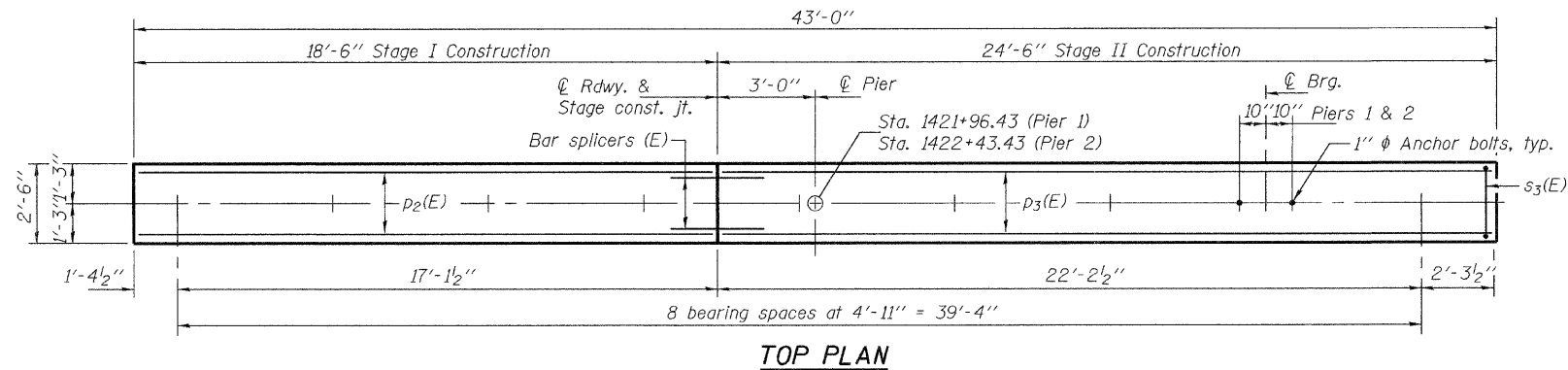
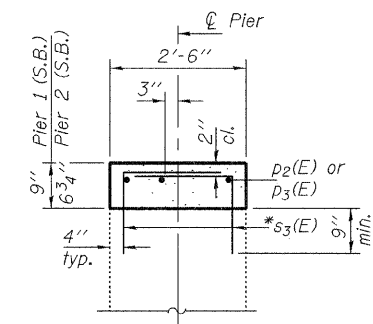


STATE OF ILLINOIS
DEPARTMENT OF TRANSPORTATION



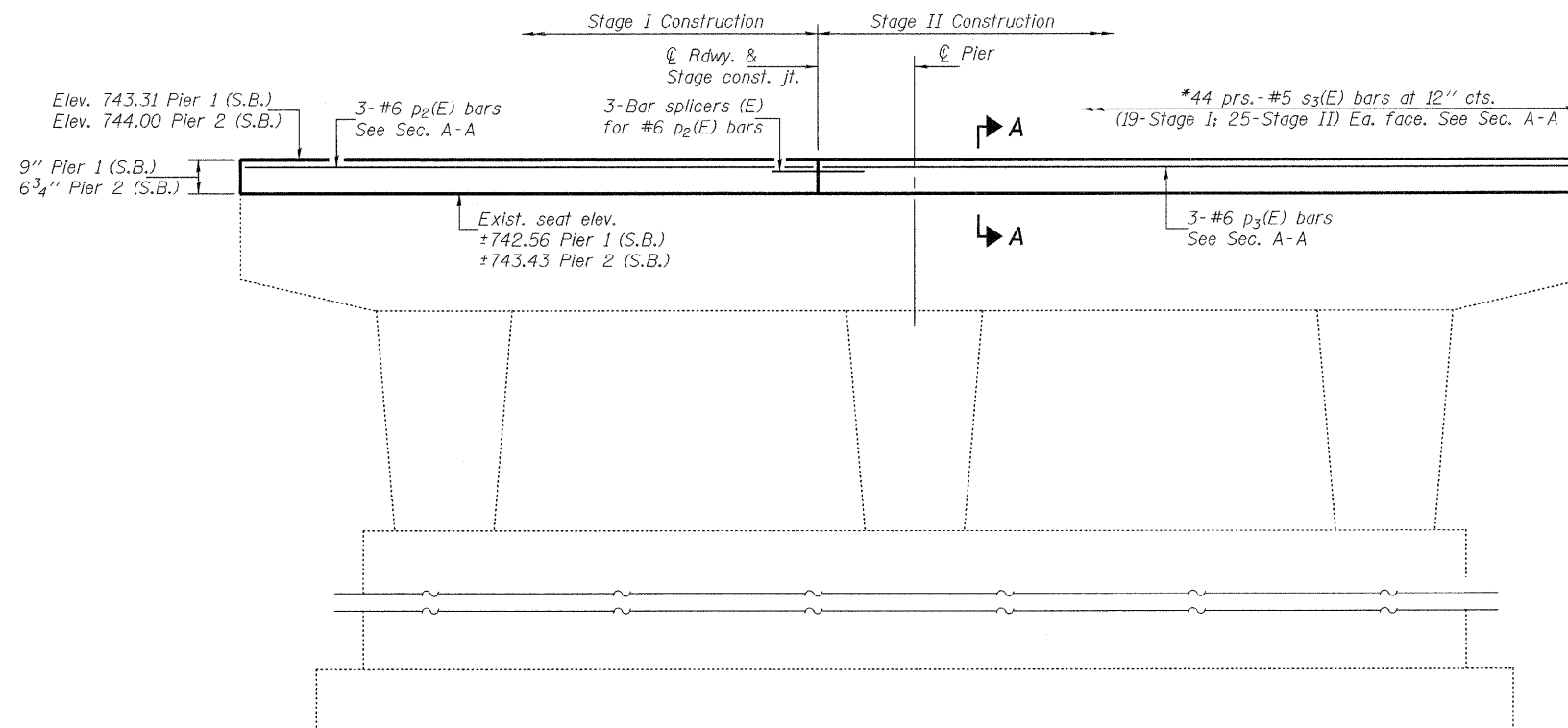
TOP PLAN



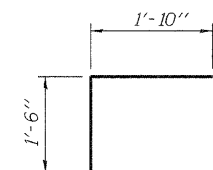
SECTION A-A



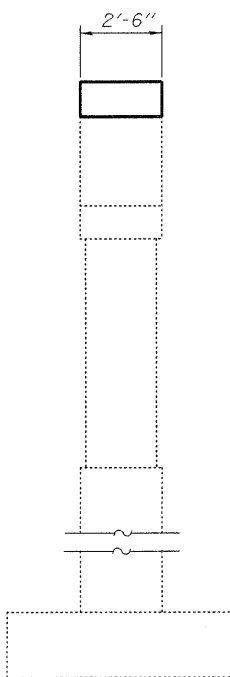
*Epoxy grout s₃(E) bars in 9" min. drilled holes according to section 584 of the Std. Spec's. Cost included with Reinforcement Bars, Epoxy Coated. All grouted bars shall have 4" cl. to the edge of existing concrete.



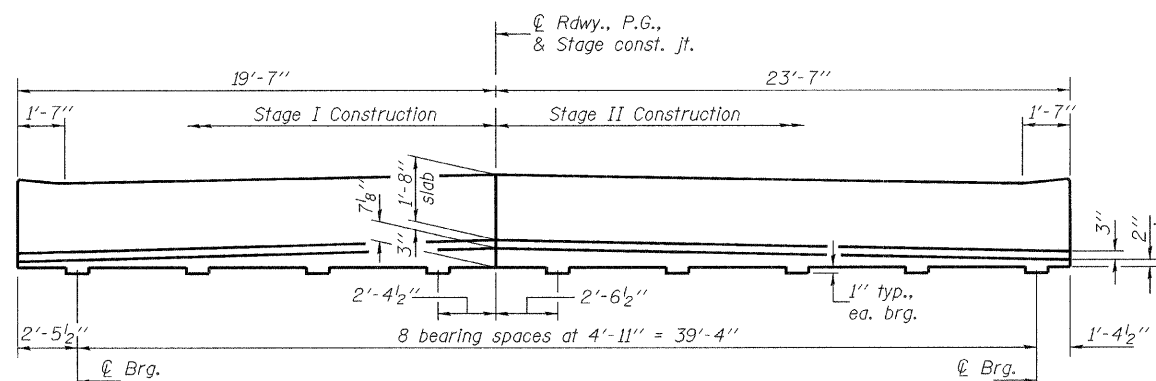
ELEVATION
(Looking south)



BAR s₃(E)



END VIEW



CROSS SECTION
(S.B. Lane - Looking south)

BILL OF MATERIAL
FOR PIERS 1 & 2 (S.B.)

Bar	No.	Size	Length	Shape
p ₂ (E)	6	#6	18'-2"	—
p ₃ (E)	6	#6	24'-2"	—
s ₃ (E)	88	#5	3'-4"	⊏
Concrete Structures		Cu. Yd.	5.1	
Reinforcement Bars, Epoxy Coated		Pound	690	

For details of bar splicers, see sheet 26 of 30.

PIERS (S.B.)
STRUCTURE NO. 037-0015 (S.B.)
STRUCTURE NO. 037-0016 (N.B.)

DESIGNED	Nicholas R. Barnett
CHECKED	Michael D. Rolape
DRAWN	h.f. duong
CHECKED	NRB/MDR/GRA

September 29, 2009

EXAMINED *Thomas J. Domagalala*
ENGINEER OF BRIDGE DESIGN

PASSED *Ralph E. Anderson*
ENGINEER OF BRIDGES AND STRUCTURES

SHEET NO. 20 30 SHEETS	F.A.I. RTE.	SECTION	COUNTY	TOTAL SHEETS	SHEET NO.
	74	37-4HB	HENRY	148	56
CONTRACT NO. 64264					
FED. ROAD DIST. NO. _ ILLINOIS FED. AID PROJECT					