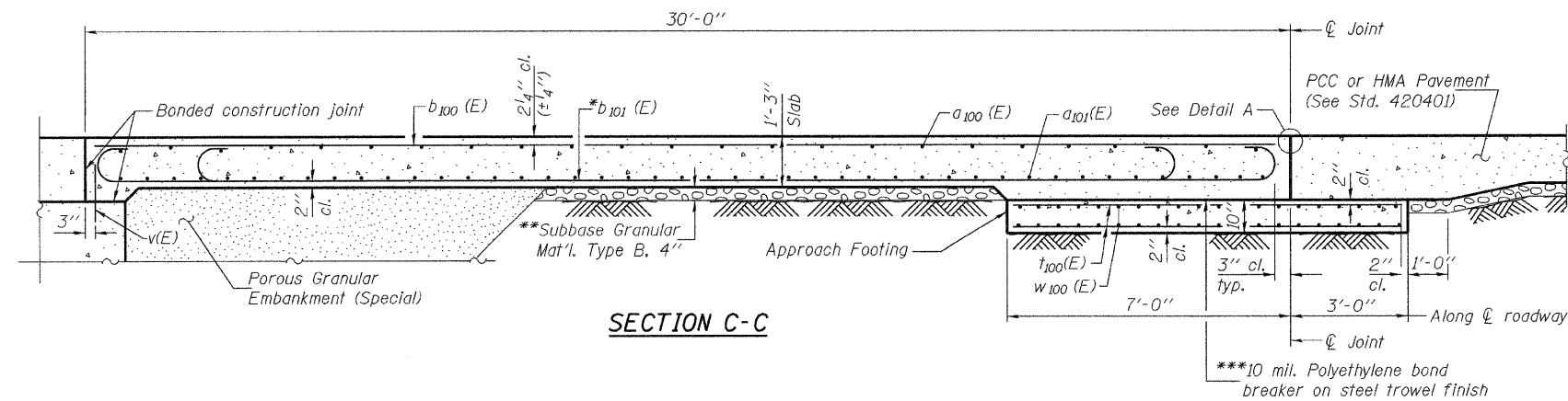


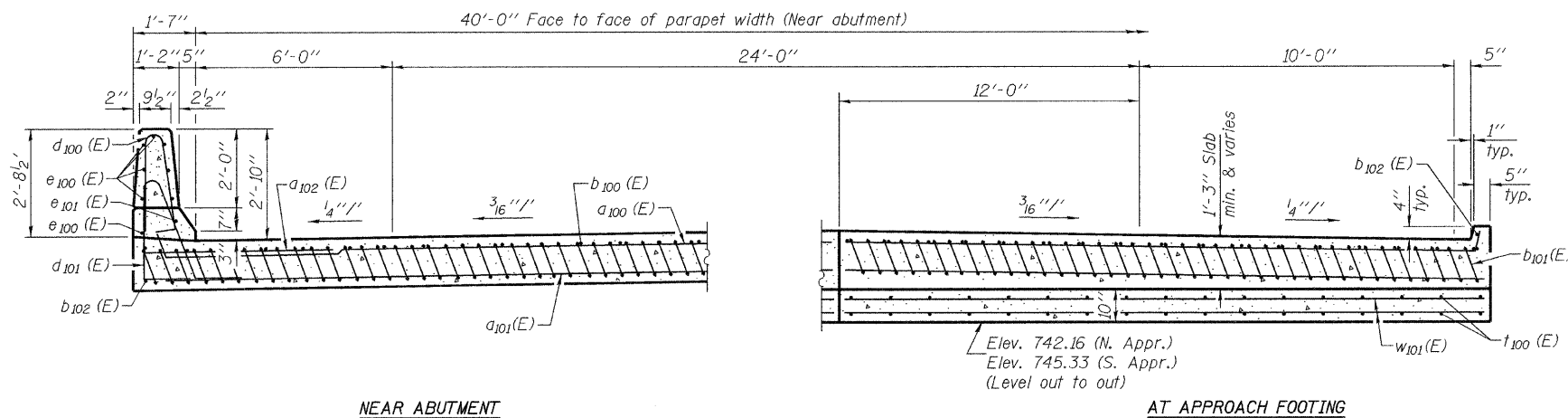
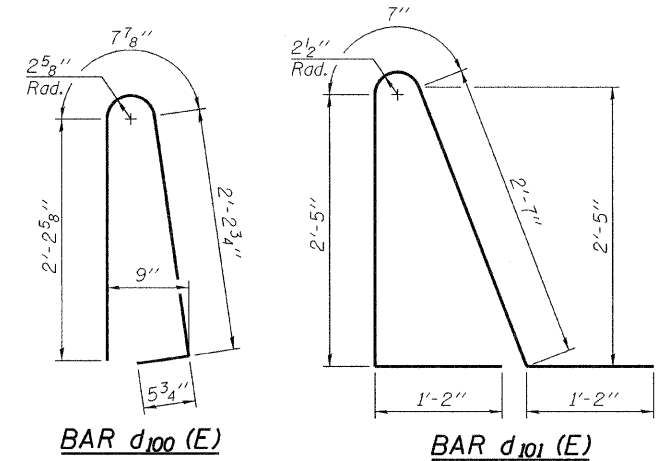
STATE OF ILLINOIS  
DEPARTMENT OF TRANSPORTATION

Notes:  
See sheet 24 of 30 for Detail A and View B-B.  
Approach slab and parapet concrete shall be paid for as Concrete Superstructure.  
Approach footing concrete shall be paid for as Concrete Structures.  
Reinforcement shall be paid for as Reinforcement Bars, Epoxy Coated.  
For v(E) bar details, see sheets 18 & 19 of 30.  
The approach footing maximum applied service bearing pressure ( $Q_{max}$ ) = 2.0 ksf.  
For bar splicer details, see sheet 26 of 30.  
Cost of excavation for approach footing included with Concrete Structures.  
For Porous Granular Embankment (Special) and drainage treatment details, see sheet 2 of 30.



SECTION C-C

\*Tilt #9 b<sub>101</sub>(E) bars as required to maintain clearance.  
\*\*\*Cost included with Concrete Superstructure.



NEAR ABUTMENT

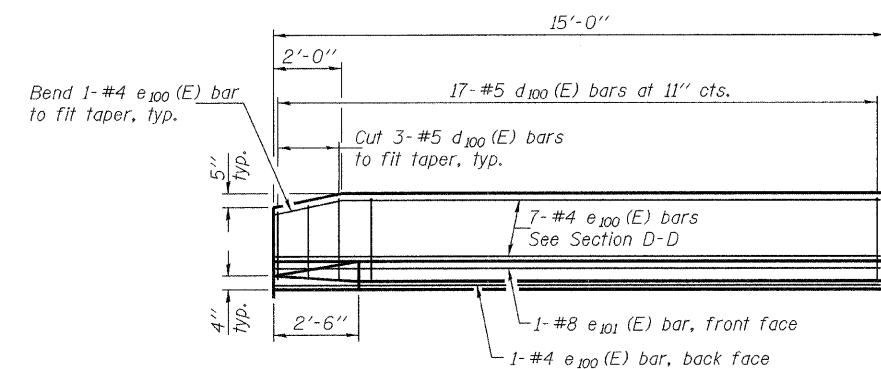
SECTION D-D

(See Plan for dimensions not shown)

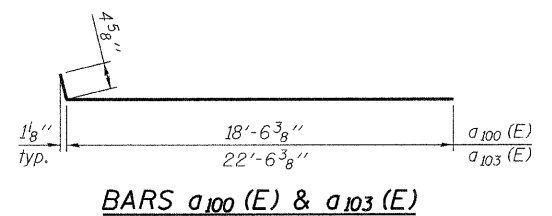
AT APPROACH FOOTING

TWO APPROACHES  
BILL OF MATERIAL

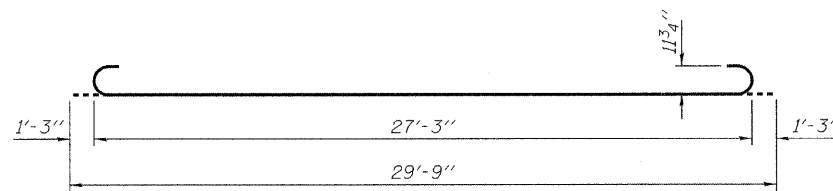
| Bar                              | No. | Size    | Length  | Shape |
|----------------------------------|-----|---------|---------|-------|
| a <sub>100</sub> (E)             | 50  | #4      | 18'-11" | U     |
| a <sub>101</sub> (E)             | 92  | #5      | 18'-7"  | U     |
| a <sub>102</sub> (E)             | 48  | #6      | 6'-0"   | U     |
| a <sub>103</sub> (E)             | 50  | #4      | 22'-11" | U     |
| a <sub>104</sub> (E)             | 92  | #5      | 22'-7"  | U     |
| b <sub>100</sub> (E)             | 70  | #4      | 29'-8"  | U     |
| b <sub>101</sub> (E)             | 202 | #9      | 29'-9"  | T     |
| b <sub>102</sub> (E)             | 8   | #4      | 14'-8"  | U     |
| d <sub>100</sub> (E)             | 68  | #5      | 5'-7"   | U     |
| d <sub>101</sub> (E)             | 68  | #5      | 7'-11"  | U     |
| e <sub>100</sub> (E)             | 32  | #4      | 14'-8"  | U     |
| e <sub>101</sub> (E)             | 4   | #8      | 14'-8"  | U     |
| t <sub>100</sub> (E)             | 176 | #4      | 9'-8"   | U     |
| w <sub>100</sub> (E)             | 80  | #5      | 18'-7"  | U     |
| w <sub>101</sub> (E)             | 80  | #5      | 22'-7"  | U     |
| Concrete Superstructure          |     | Cu. Yd. | 133.2   |       |
| Concrete Structures              |     | Cu. Yd. | 25.8    |       |
| Reinforcement Bars, Epoxy Coated |     | Pound   | 33680   |       |



VIEW E-E



BARS a<sub>100</sub>(E) & a<sub>103</sub>(E)



BAR b<sub>101</sub>(E)

BRIDGE APPROACH SLAB DETAILS (N.B.)  
STRUCTURE NO. 037-0015 (S.B.)  
STRUCTURE NO. 037-0016 (N.B.)

DESIGNED Nicholas R. Barnett  
CHECKED Michael D. Rolape  
DRAWN h.t. duong  
CHECKED NRB/MDR/GRA

September 29, 2009  
EXAMINED Thomas J. Demagalick  
PASSED Ralph E. Anderson

| SHEET NO. 25                                    | F.A.I. RTE. | SECTION | COUNTY | TOTAL SHEETS | SHEET NO. |
|-------------------------------------------------|-------------|---------|--------|--------------|-----------|
| 30 SHEETS                                       | 74          | 37-4HB  | HENRY  | 148          | 61        |
| CONTRACT NO. 64264                              |             |         |        |              |           |
| FED. ROAD DIST. NO. - ILLINOIS FED. AID PROJECT |             |         |        |              |           |