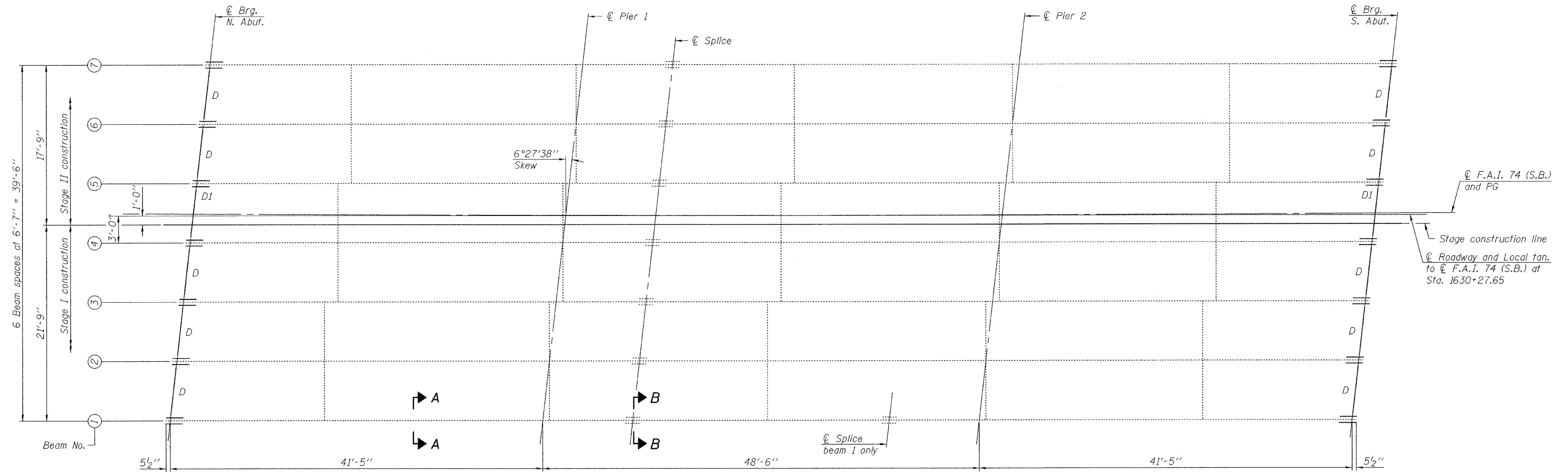


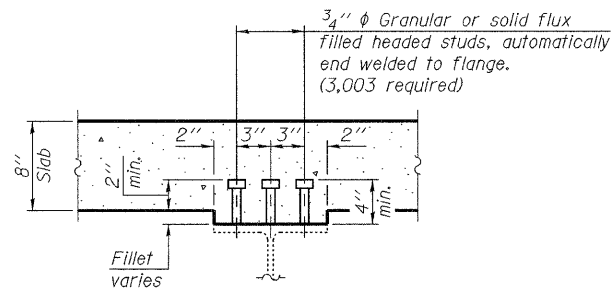
STATE OF ILLINOIS
DEPARTMENT OF TRANSPORTATION



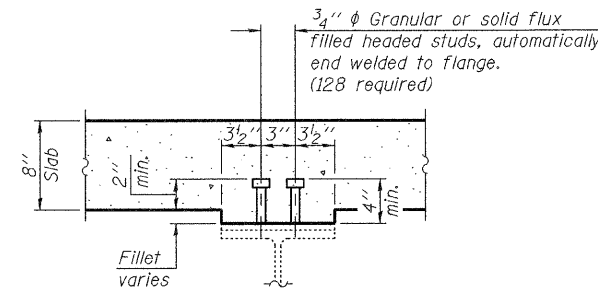
PLAN
Existing beams 27WF94



Note:
See sheet 18 of 27 for diaphragm D and D1 details.
Shear connectors over the splice are in rows of 2. See Sec. B-B. Shear connectors in other locations, except over the splice, are in rows of 3. See Sec. A-A.



SECTION A-A



SECTION B-B
(Over splice only)

DESIGNED	Nicholas R. Barnett
CHECKED	Michael D. Rolape
DRAWN	Michael B. Mossman
CHECKED	N.R.B./M.D.R./G.R.A.

September 29, 2009
 EXAMINED *Thomas J. Demagalki*
 ENGINEER OF BRIDGE DESIGN
 PASSED *Ralph E. Anderson*
 ENGINEER OF BRIDGES AND STRUCTURES

STRUCTURAL STEEL
STRUCTURE NO. 037-0017 (S.B.)

SHEET NO. 16 27 SHEETS	F.A.I. RTE.	SECTION	COUNTY	TOTAL SHEETS	SHEET NO.
	74	37-4HB-1	HENRY	148	82
CONTRACT NO. 64264					
ILLINOIS FED. AID PROJECT					