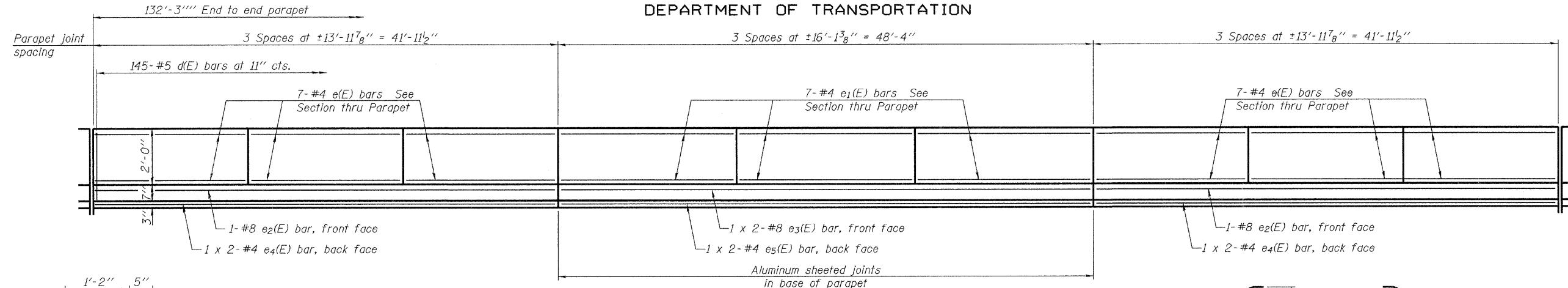
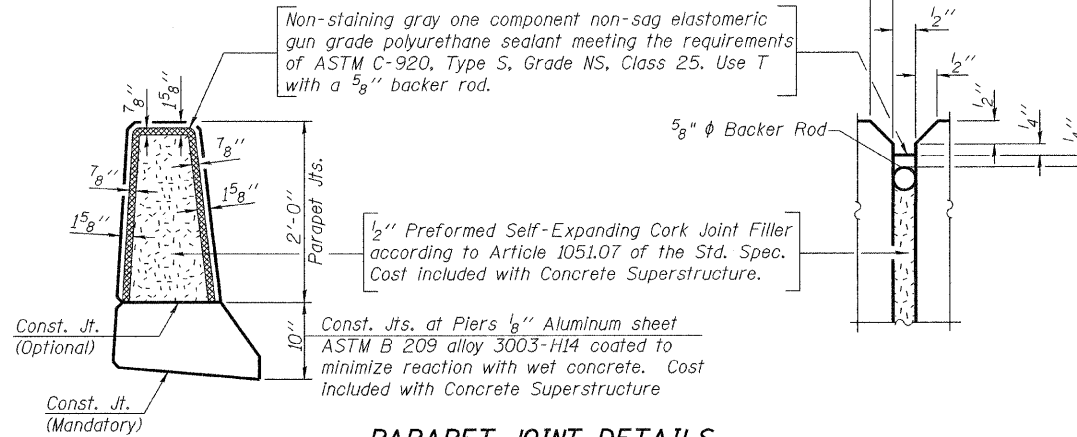


STATE OF ILLINOIS  
DEPARTMENT OF TRANSPORTATION

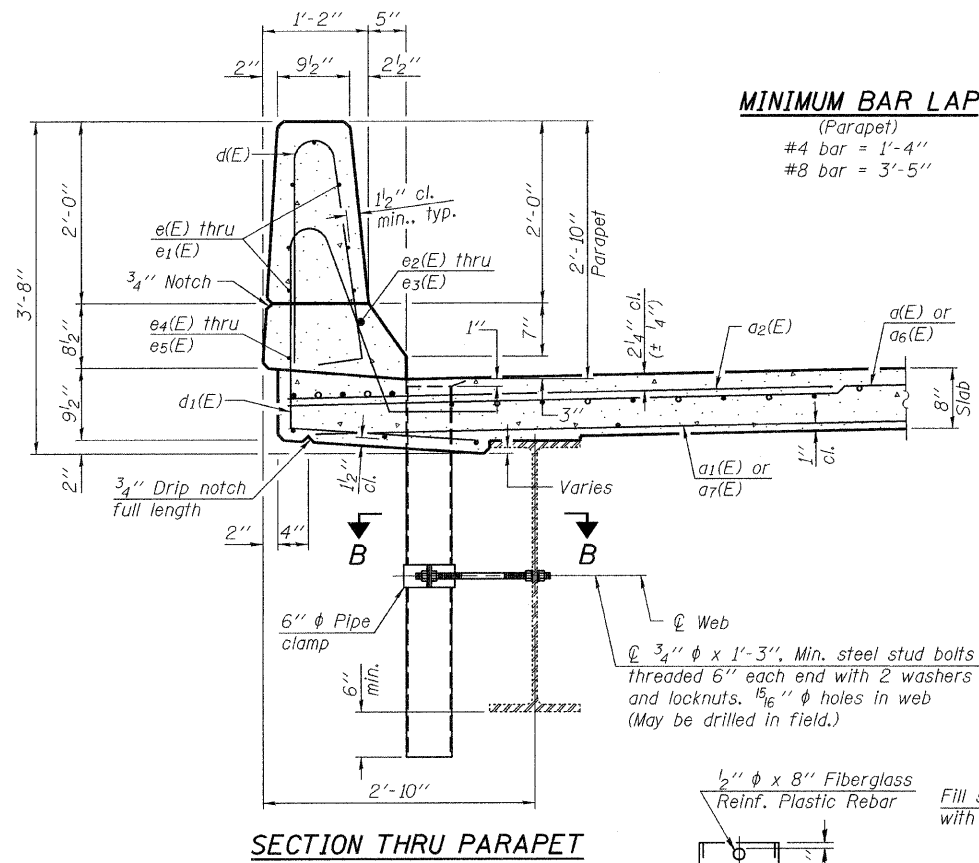


INSIDE ELEVATION OF PARAPET



PARAPET JOINT DETAILS

Notes:  
Drains shall be located clear of all diaphragms.  
The exterior surfaces of the floor drains shall be painted with the finish coat as specified in the special provisions for Cleaning and Painting New Metal Structures. The exterior surfaces of the drains shall be cleaned according to the Society of Protective Coatings Spec. SSPC-SP1 prior to painting.  
Fiberglass pipe shall conform to ASTM D 2996, with short-time rupture strength hoop tensile stress of 30,000 p.s.i. minimum. Galvanize clamping device according to AASHTO M232.



MINIMUM BAR LAP

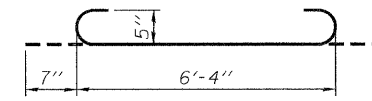
SECTION THRU PARAPET

FIBERGLASS PIPE

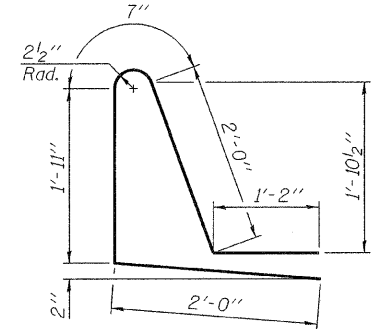
ALUMINUM TUBE

TOP PLAN

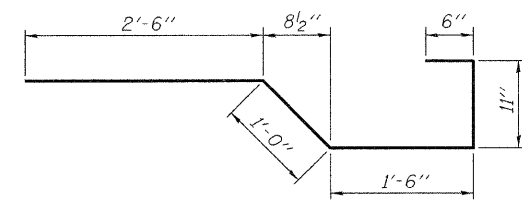
BAR d(E)



a3(E) BAR



BAR d1(E)



BAR x(E)

SUPERSTRUCTURE  
BILL OF MATERIAL

| Bar                              | No. | Size     | Length  | Shape |
|----------------------------------|-----|----------|---------|-------|
| a(E)                             | 206 | #5       | 24'-2"  |       |
| a1(E)                            | 160 | #5       | 23'-5"  |       |
| a2(E)                            | 214 | #6       | 6'-0"   |       |
| a3(E)                            | 30  | #5       | 7'-6"   |       |
| a4(E)                            | 2   | #5       | 21'-5"  |       |
| a5(E)                            | 8   | #5       | 24'-1"  |       |
| a6(E)                            | 206 | #5       | 20'-1"  |       |
| a7(E)                            | 160 | #5       | 19'-3"  |       |
| a9(E)                            | 2   | #5       | 17'-5"  |       |
| a10(E)                           | 8   | #5       | 20'-1"  |       |
| b(E)                             | 240 | #5       | 28'-2"  |       |
| b1(E)                            | 90  | #6       | 26'-4"  |       |
| b2(E)                            | 258 | #5       | 23'-10" |       |
| d(E)                             | 290 | #5       | 5'-7"   |       |
| d1(E)                            | 290 | #5       | 7'-8"   |       |
| e(E)                             | 84  | #4       | 13'-8"  |       |
| e1(E)                            | 42  | #4       | 15'-10" |       |
| e2(E)                            | 4   | #8       | 41'-8"  |       |
| e3(E)                            | 4   | #8       | 25'-9"  |       |
| e4(E)                            | 8   | #4       | 21'-7"  |       |
| e5(E)                            | 4   | #4       | 24'-9"  |       |
| x(E)                             | 74  | #5       | 6'-5"   |       |
| Reinforcement Bars, Epoxy Coated |     | Pound    | 42,880  |       |
| Concrete Superstructure          |     | Cu. Yds. | 193.2   |       |

Bars indicated thus 1 x 2-#8 etc. indicates 1 line of bars with 2 lengths per line.

SUPERSTRUCTURE DETAILS  
STRUCTURE NO. 037-0018 (N.B.)

| SHEET NO. 12              | F.A.I. RTE. | SECTION  | COUNTY | TOTAL SHEETS | SHEET NO. |
|---------------------------|-------------|----------|--------|--------------|-----------|
| 27 SHEETS                 | 74          | 37-4HB-1 | HENRY  | 148          | 105       |
| CONTRACT NO. 64264        |             |          |        |              |           |
| ILLINOIS FED. AID PROJECT |             |          |        |              |           |

DESIGNED Michael D. Rolape  
CHECKED Nicholas R. Barnett  
DRAWN Michael B. Mossman  
CHECKED M.D.R./N.R.B./G.R.A.

September 29, 2009  
EXAMINED Thomas J. Demagali  
PASSED Ralph E. Anderson