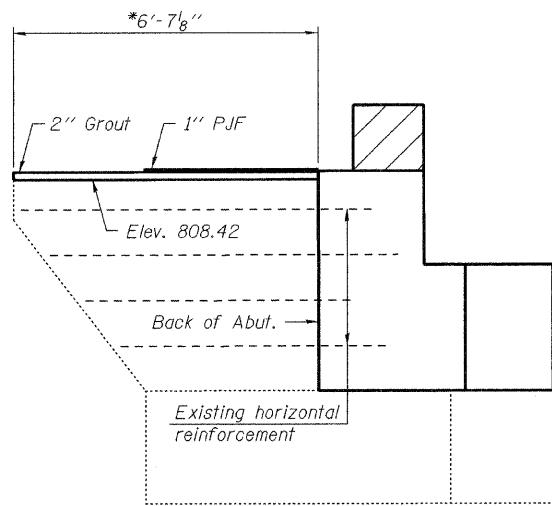
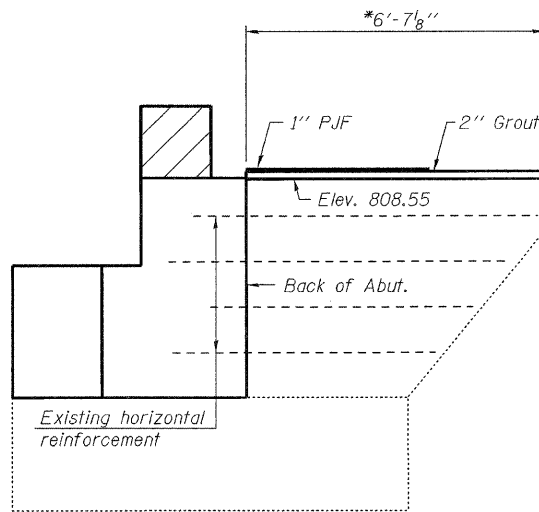


STATE OF ILLINOIS
DEPARTMENT OF TRANSPORTATION

Notes:
Existing horizontal and vertical reinforcement extending into new construction shall be cleaned, straightened, and incorporated into the new construction. Cost included with Concrete Removal.
Existing reinforcement not extending into new construction shall be cut off and covered with a 2" layer of cement grout. Cost shall be included with the cost of Concrete Removal.
Cost of 1" PJF is included with Concrete Structures.
Cost of 2" cement grout is included with Concrete Removal.

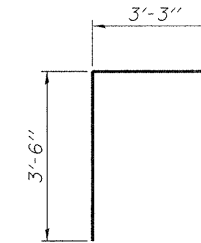


**EAST WINGWALL
ELEVATION**

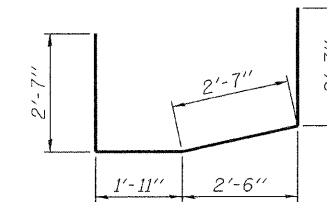


**WEST WINGWALL
ELEVATION**

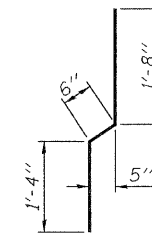
* Measured along outside face of wingwall.



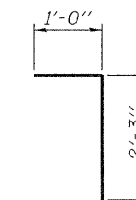
BAR s(E)



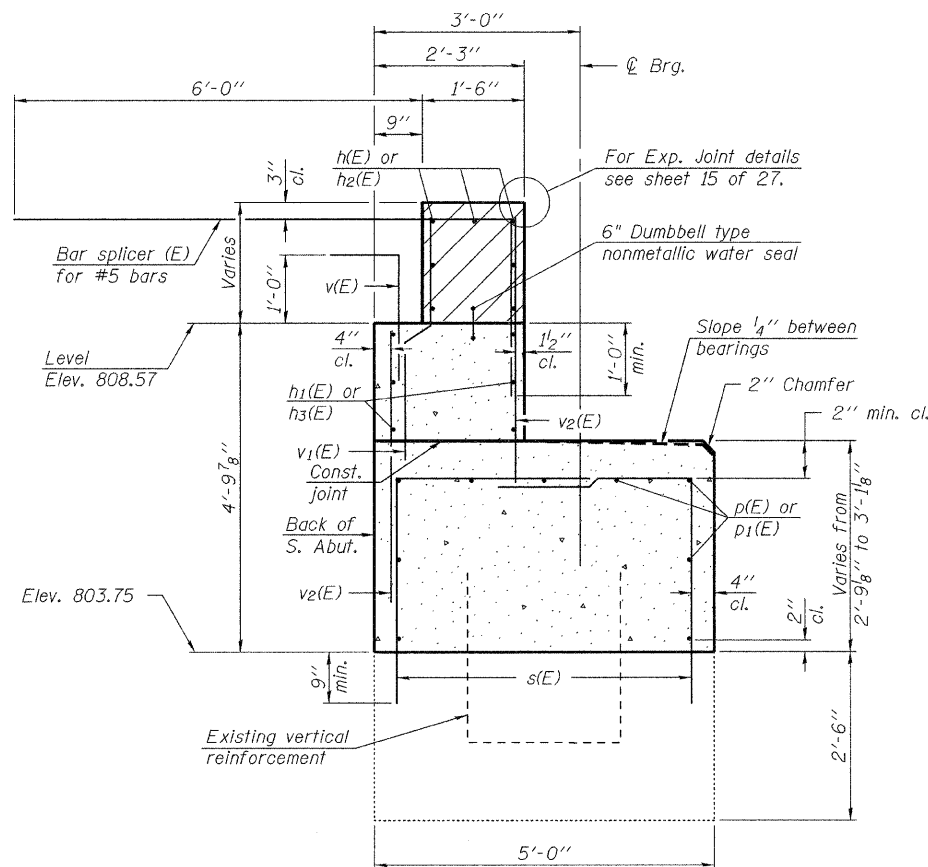
BAR u(E)



BAR v1(E)



BAR v(E)



**SECTION THRU
ABUTMENT**

**SOUTH ABUTMENT
BILL OF MATERIAL**

Bar	No.	Size	Length	Shape
d ₂ (E)	4	#5	7'-11"	Δ
h(E)	7	#6	24'-4"	—
h ₁ (E)	6	#5	24'-4"	—
h ₂ (E)	7	#6	20'-4"	—
h ₃ (E)	6	#5	20'-4"	—
p(E)	9	#7	24'-4"	—
p ₁ (E)	9	#7	20'-4"	—
s(E)	92	#5	6'-9"	└
u(E)	8	#6	9'-8"	└
v(E)	46	#5	3'-3"	└
v ₁ (E)	46	#4	3'-6"	—
v ₂ (E)	92	#5	3'-11"	—
Structure Excavation		Cu. Yd.	95	
Concrete Structures		Cu. Yd.	31.6	
Reinforcement Bars, Epoxy Coated		Pound	3,010	
Concrete Sealer		Sq. Ft.	206	

For details of Bar Splicers, see sheet 26 of 27.

For d₂(E) bar bending diagram, see sheet 14 of 27.

DESIGNED	Michael D. Rolape
CHECKED	Nicholas R. Barnett
DRAWN	Michael B. Mossman
CHECKED	M.D.R./N.R.B./G.R.A.

EXAMINED	September 29, 2009	Thomas J. Damagalki
PASSED		Ralph E. Anderson

**SOUTH ABUTMENT
STRUCTURE NO. 037-0018 (N.B.)**

SHEET NO. 25	F.A.I. RTE.	SECTION	COUNTY	TOTAL SHEETS	SHEET NO.
27 SHEETS	74	37-4HB-1	HENRY	198	118
				CONTRACT NO. 64264	
ILLINOIS FED. AID PROJECT					