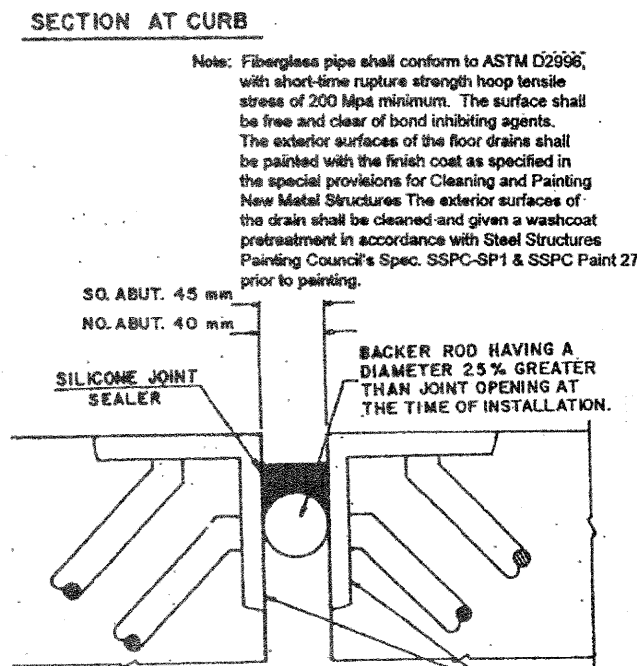
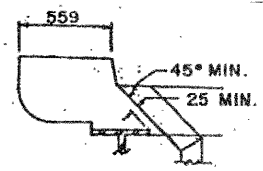
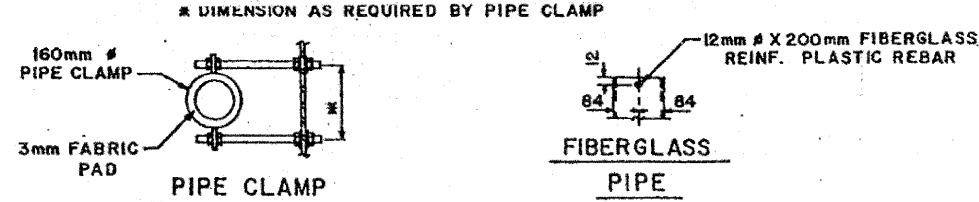
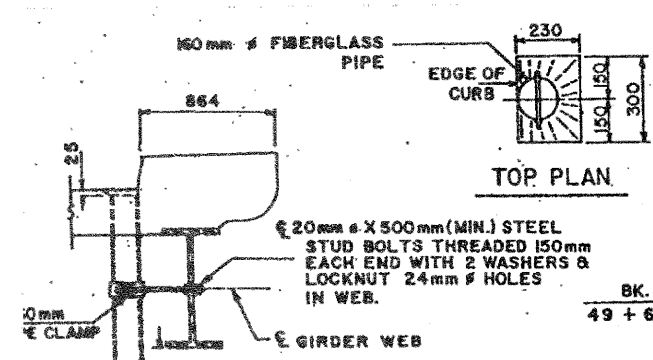
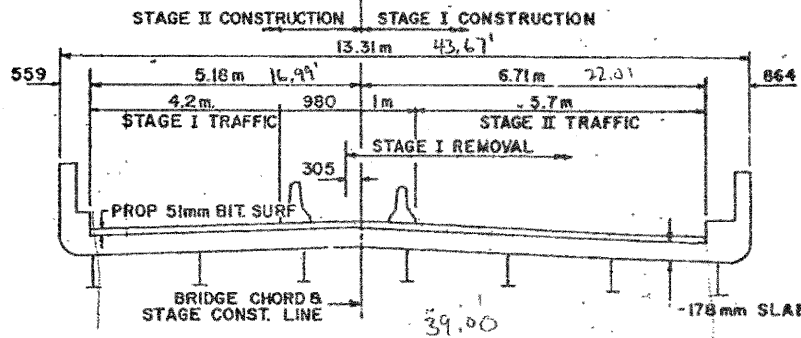
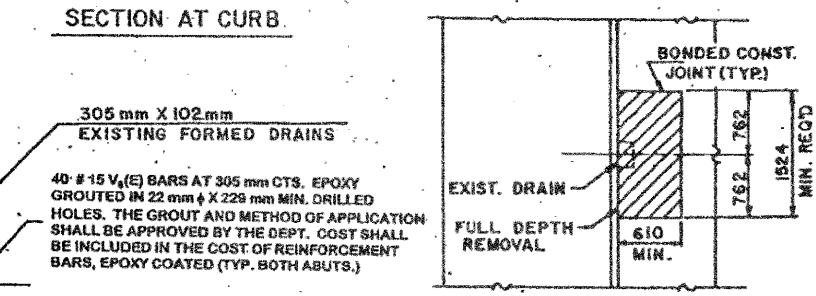
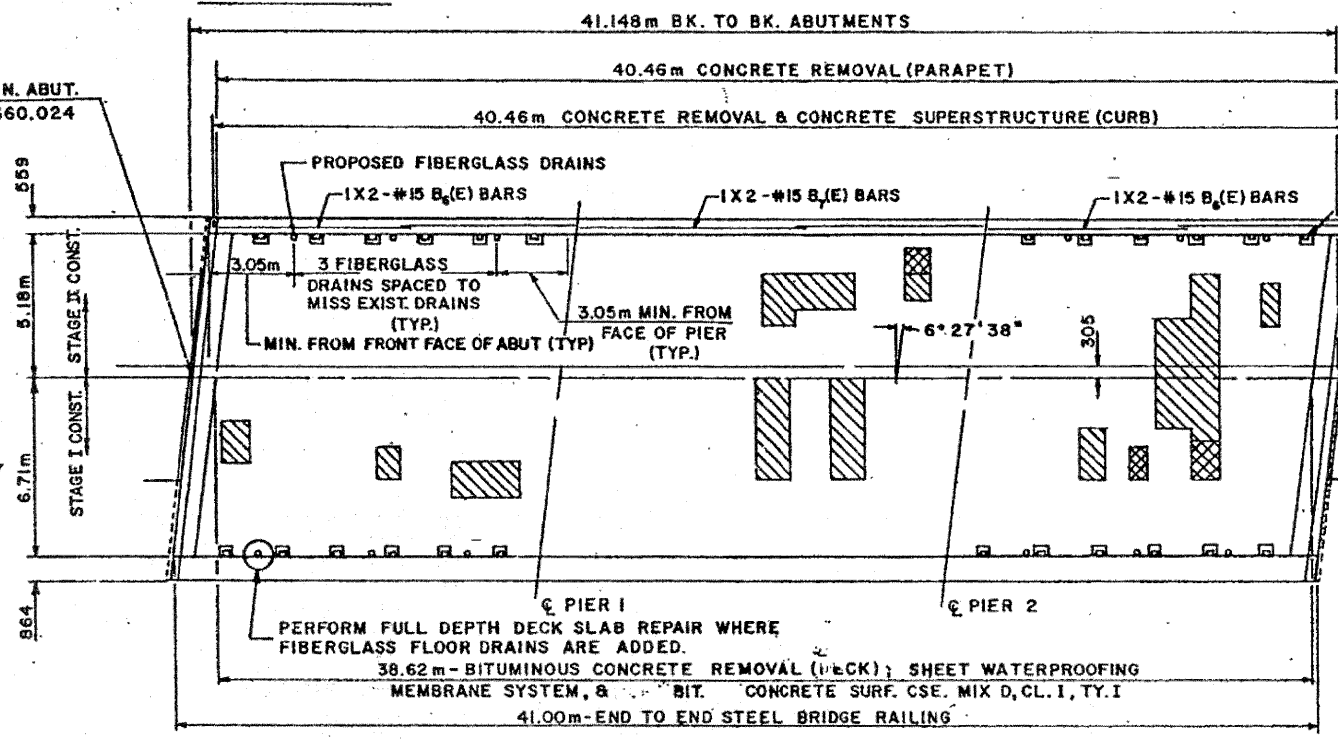


PROJECT NO.	DIST.	COUNTY	TOTAL SHEETS	SHEET NO.
FAI 74	2	HENRY	148	110

PROJECT: (37-3)RS-1, (37-4)RS & 37-4B-D
SHEET NO. 2
7 SHEETS



Note: Fiberglass pipe shall conform to ASTM D2996, with short-time rupture strength hoop tensile stress of 200 MPa minimum. The surface shall be free and clear of bond inhibiting agents. The exterior surfaces of the floor drains shall be painted with the finish coat as specified in the special provisions for Cleaning and Painting New Metal Structures. The exterior surfaces of the drain shall be cleaned and given a washcoat pretreatment in accordance with Steel Structures Painting Council's Spec. SSPC-SP1 & SSPC Paint 27 prior to painting.

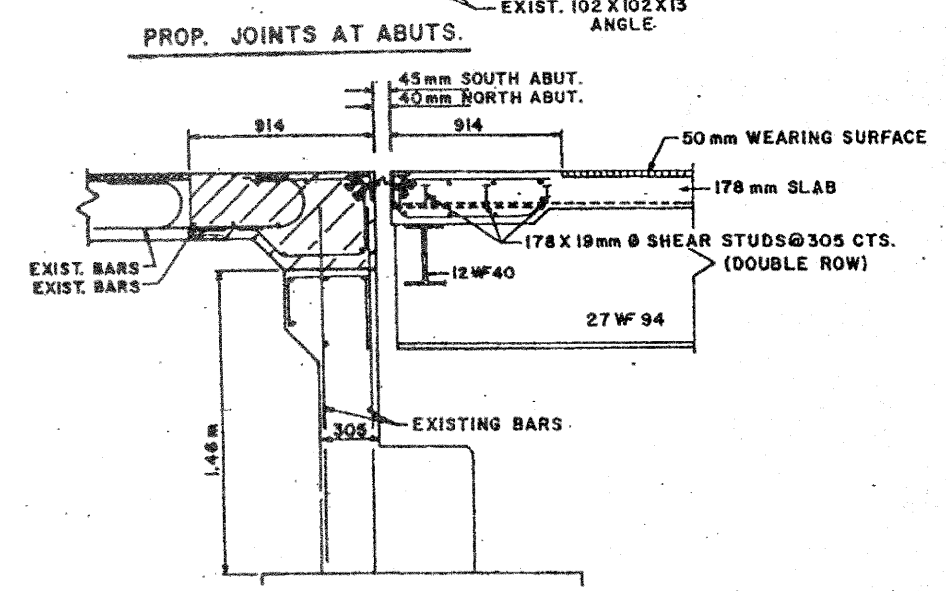


▨ - DECK SLAB REPAIR (PARTIAL DEPTH) ▩ - DECK SLAB REPAIR (FULL DEPTH)

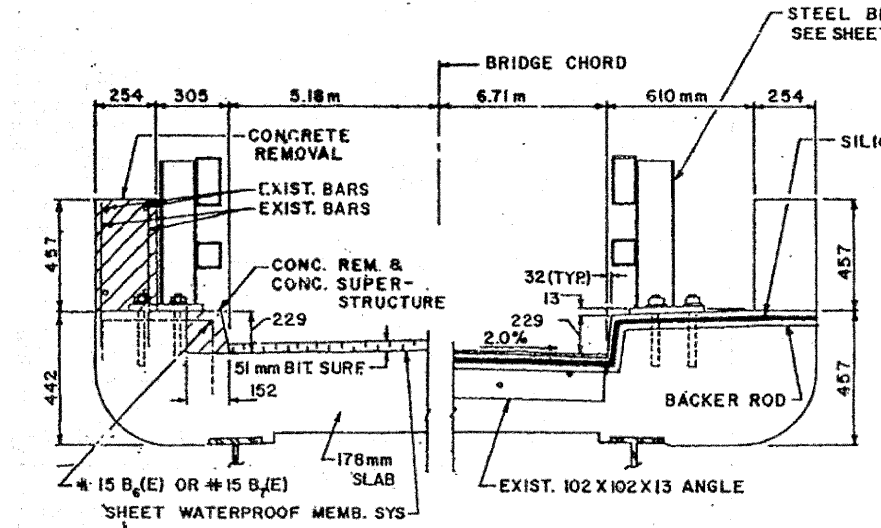
BILL OF MATERIALS

BAR	No.	SIZE	LENGTH	SHAPE
B _s (E)	4	#15	6.55	
B _e (E)	2	#15	7.47	
V _s (E)	80	#15	0.6	

ITEM	UNIT	QUANTITY
CONCRETE REMOVAL	Cu. M.	6.1
CONCRETE SUPERSTRUCTURE	Cu. M.	14
REINFORCEMENT BARS, EPOXY CTD.	Kg.	140.0
BITUMINOUS CONC. REMOVAL (DECK)	Sq. M.	460
POLY BIT. CONC. SURF. CSE MIX D, CL. I, TYP.	M. Ton	58
SHEET WATERPROOFING MEMBRANE SYS.	Sq. M.	460
SILICONE JOINT SEALER	M.	27.5
DECK SLAB REPAIR (PARTIAL)	Sq. M.	33
DECK SLAB REPAIR (FULL DEPTH-T1)	Sq. M.	5
DECK SLAB REPAIR (FULL DEPTH-T2)	Sq. M.	26
FLOOR DRAINS	EA.	12
STEEL BRIDGE RAIL	M.	82



TYPICAL SECTION THRU EXIST. ABUTMENT



TYPICAL HALF SECTION THRU DECK TYPICAL HALF SECTION AT ABUT.

**EXISTING BRIDGE PLANS
FOR REFERENCE ONLY**

S.N. 037-0017
DISTRICT NO. 2 DIXON
DESIGNED BY D. PAUSER
DRAWN BY D. LINK
CHECKED BY
DATE 9/97
SCALE