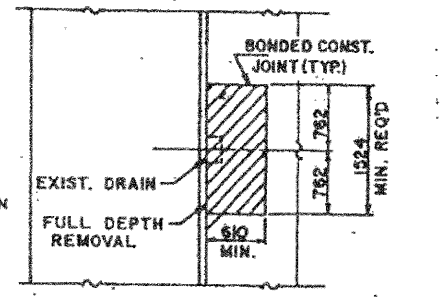
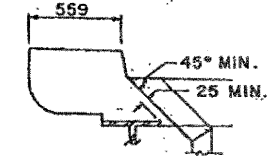
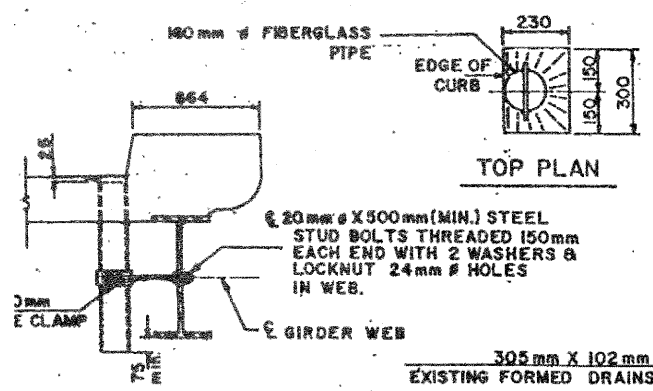
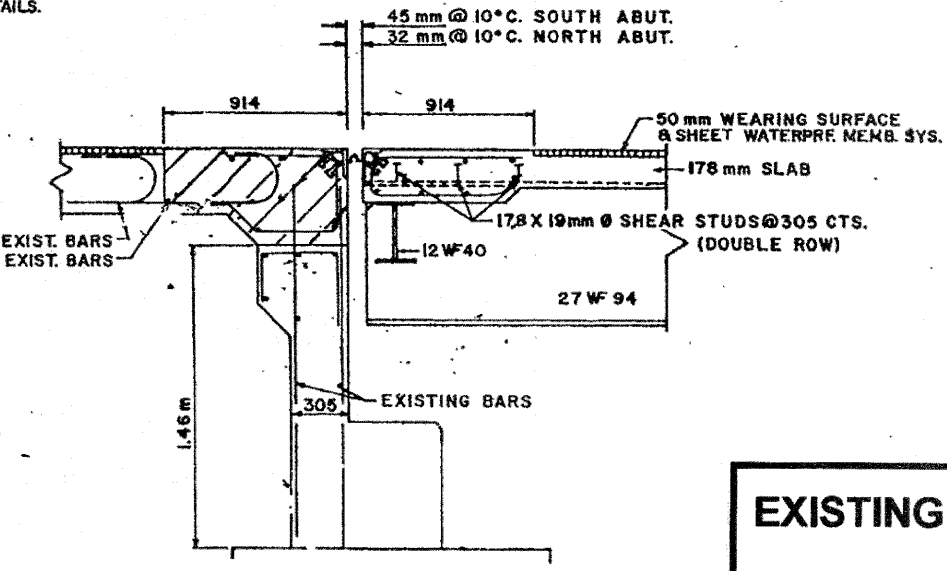
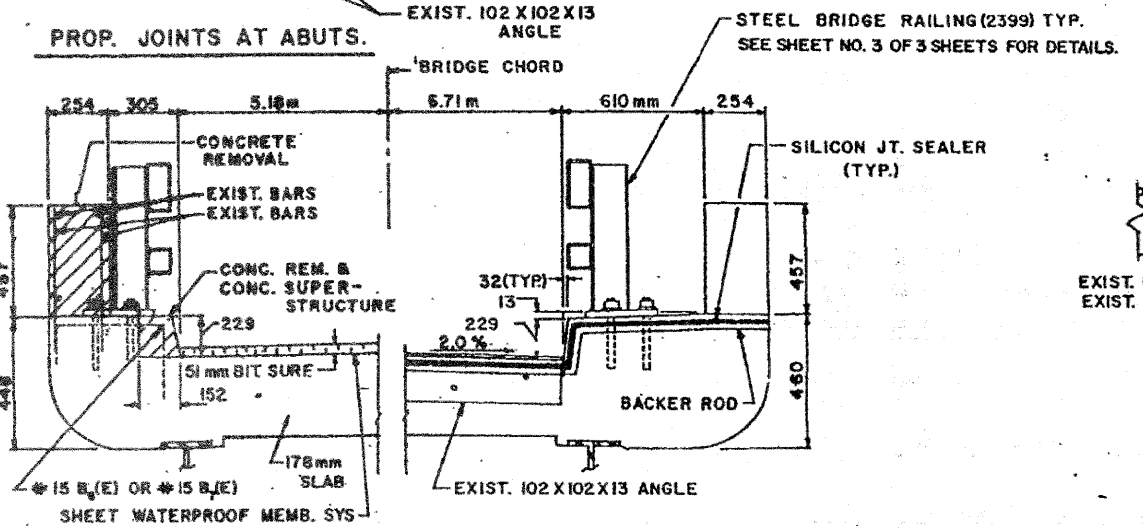
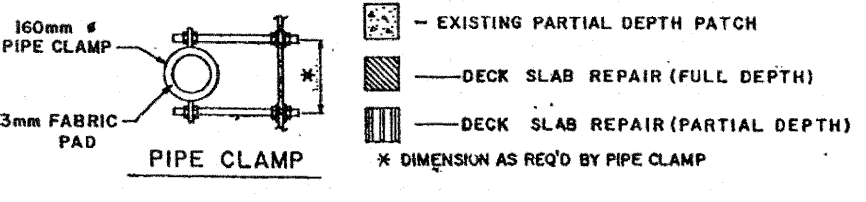
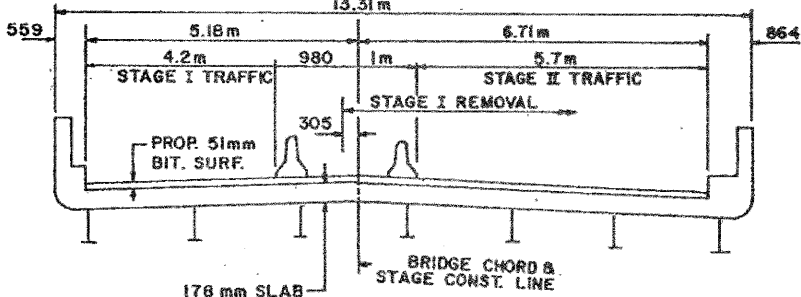
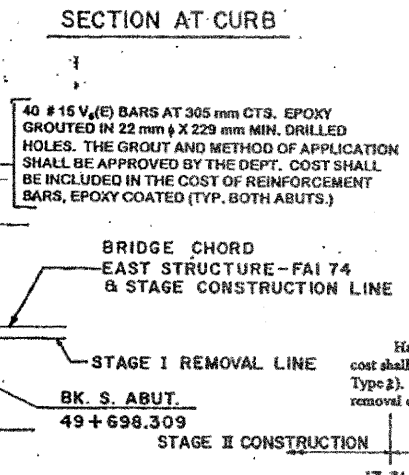
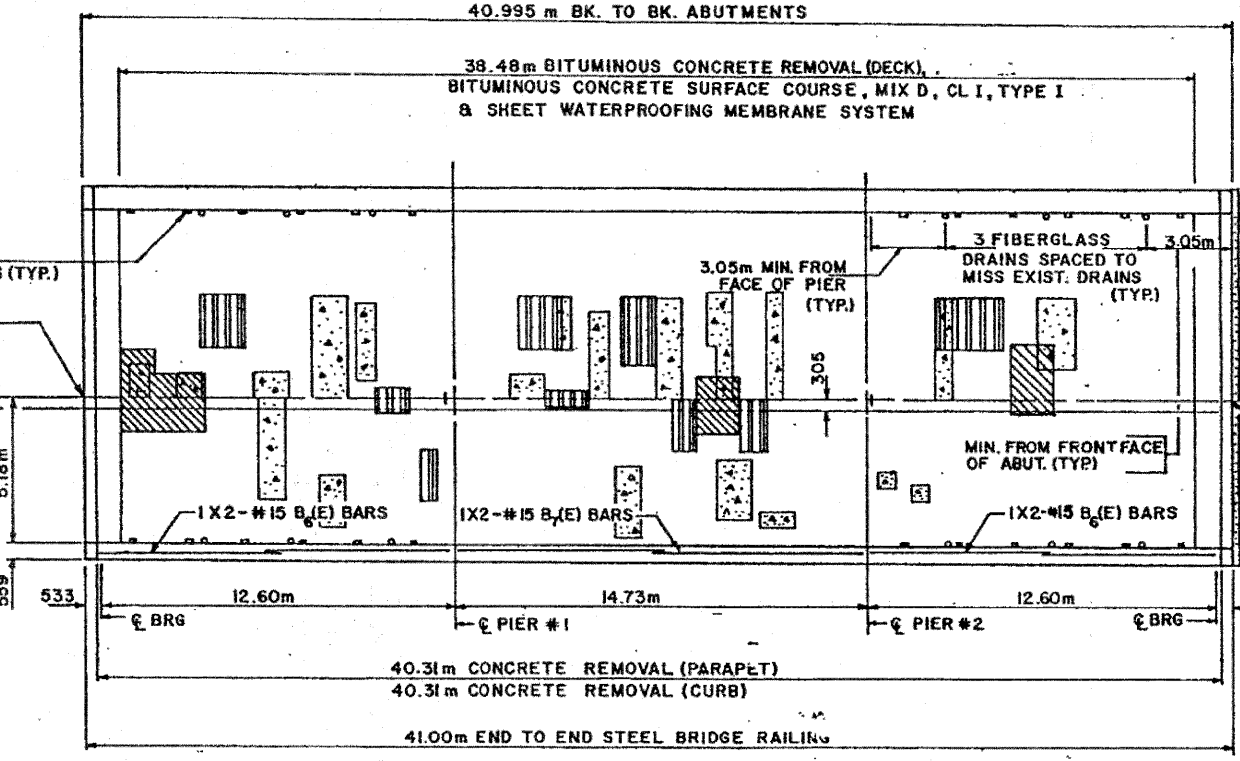
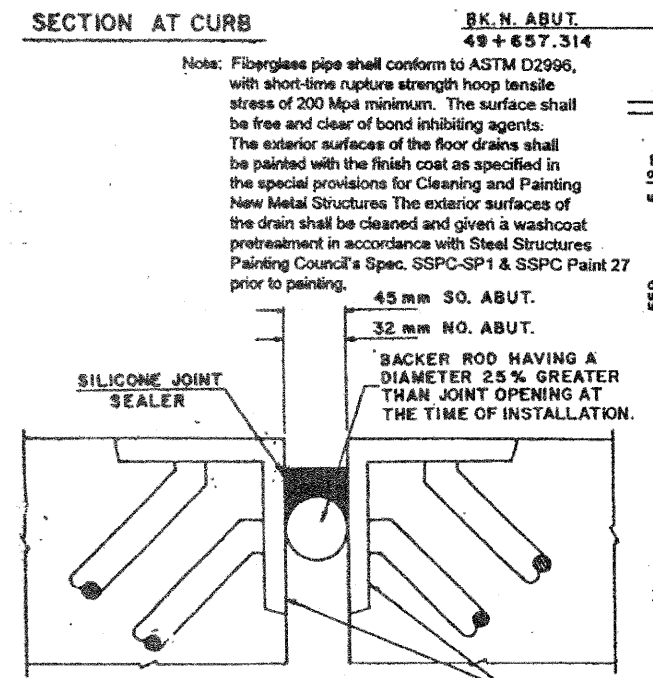


ROUTE NO.	SEC.	COUNTY	TOTAL SHEETS	SHEET NO.
FAI 74	H	HENRY	149	112
PROJECT NO. 037-0018				
SHEET NO. 2 OF 3 SHEETS				



**Notes:** Fiberglass pipe shall conform to ASTM D2996, with short-time rupture strength hoop tensile stress of 200 Mpa minimum. The surface shall be free and clear of bond inhibiting agents. The exterior surfaces of the floor drains shall be painted with the finish coat as specified in the special provisions for Cleaning and Painting New Metal Structures. The exterior surfaces of the drain shall be cleaned and given a washcoat pretreatment in accordance with Steel Structures Painting Council's Spec. SSPC-SP1 & SSPC Paint 27 prior to painting.



**BILL OF MATERIALS**

BAR	No.	SIZE	LENGTH	SHAPE
B <sub>s</sub> (E)	4	#15	6.55	
B <sub>s</sub> (E)	2	#15	7.47	
V <sub>s</sub> (E)	80	#15	0.6	

ITEM	UNIT	QUANTITY
CONCRETE REMOVAL	Cu. M.	6.03
CONCRETE SUPERSTRUCTURE	Cu. M.	1.35
REINFORCEMENT BARS, EPOXY CTD.	Kg.	140.0
BITUMINOUS CONC. REMOVAL (DECK)	Sq. M.	458
POLY. BIT. CONC. SURF. CES. MIX D, CL I, TYP.	M. Ton	56
SHEET WATERPROOFING MEMBRANE SYS.	Sq. M.	458
SILICONE JOINT SEALER	M.	27.5
DECK SLAB REPAIR (PARTIAL)	Sq. M.	20
DECK SLAB REPAIR (FULL DEPTH-T1)	Sq. M.	5
DECK SLAB REPAIR (FULL DEPTH-T2)	Sq. M.	37
FLOOR DRAINS	Es.	12
STEEL BRIDGE RAIL	M.	82

**EXISTING BRIDGE PLANS FOR REFERENCE ONLY**

S.N. 037-0018  
 DISTRICT NO. 2 DIXON  
 DESIGNED D. PAUSER  
 DRAWN D. LINK DATE 9/97  
 CHECKED SCALE