

SQUAD LEADER: JENNIFER LUBBS (815)284-5958 PROJECT ENGINEER: BECKY MARRUFFO  
 0264404-shr-cover.dgn 8/3/2009 11:05:15 AM HAS

F.A.P. RTE.	SECTION	COUNTY	TOTAL SHEETS	SHEET NO.
638	129BR	HENRY	42	1
FED. ROAD DIST. NO.		ILLINOIS	CONTRACT NO. 64A04	

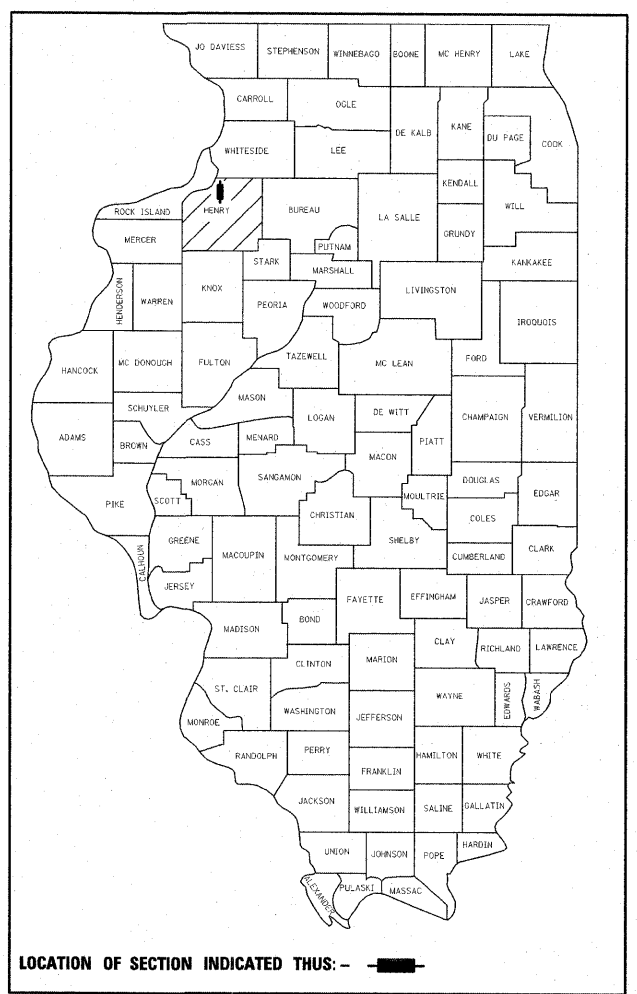
D-92-052-04 \*42+1=43

**STATE OF ILLINOIS**  
**DEPARTMENT OF TRANSPORTATION**  
**DIVISION OF HIGHWAYS**

**PROPOSED**  
**HIGHWAY PLANS**

**FAP ROUTE 638 (IL 82)**  
**SECTION 129BR**  
**PROJECT ACBRF-0638(012)**  
**HENRY COUNTY**

**C 92-059-09**  
**STRUCTURE REPLACEMENT**  
**OVER ELKS BRANCH NORTH OF GENESEO**  
**4TH PM**  
**R3E**



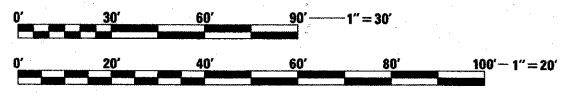
**FUNCTIONAL CLASSIFICATION: MINOR ARTERIAL (NON URBAN)**  
**DESIGN SPEED: 55 mph**  
**POSTED SPEED: 55 mph**  
**ADT: 2100 (2008)**  
**PV: 91.9%**  
**SU: 6.0%**  
**MU: 2.1%**

STATE OF ILLINOIS  
 DEPARTMENT OF TRANSPORTATION  
 DIVISION OF HIGHWAYS

SUBMITTED August 5, 2009  
 George F. Ryan  
 DEPUTY DIRECTOR OF HIGHWAYS, REGION ENGINEER  
 October 2, 2009  
 Charles C. Ingersoll  
 ENGINEER OF DESIGN AND ENVIRONMENT  
 October 2, 2009  
 Christine M. Reed  
 DIRECTOR OF HIGHWAYS, CHIEF ENGINEER

**INDEX OF SHEETS**

SHEET NO.	DESCRIPTION
1.	COVER SHEET
2.	GENERAL NOTES AND STANDARDS
3.	SUMMARY OF QUANTITIES
<b>ROADWAY PLANS - SN 037-2027</b>	
4.-5.	TYPICAL SECTIONS
6.-7.	SCHEDULE OF QUANTITIES
8.	HORIZONTAL AND VERTICAL CONTROL
9.-12.	FAP RTE 638 (IL 82) PLAN AND PROFILE
13.-14.	STAGE CONSTRUCTION PLANS
15.	STAGE CONSTRUCTION DETAILS
16.	EROSION CONTROL AND DRAINAGE PLAN
17.	MISCELLANEOUS DETAILS
<b>STRUCTURE PLANS - SN 037-2027</b>	
18.	GENERAL PLAN
19.	STAGED CONSTRUCTION
20.	TEMPORARY CONCRETE BARRIER FOR STAGE CONSTRUCTION
21.-22.	CULVERT DETAILS
23.	BAR SPLICER ASSEMBLY DETAILS
24.-25.	SOIL BORING LOGS
<b>EXISTING STRUCTURE PLANS - SN 037-2003</b>	
26.	EXISTING STRUCTURE PLANS
<b>CROSS SECTIONS - SN 037-2027</b>	
27.-34.	FAP RTE 638 (IL 82) CROSS SECTIONS
<b>DISTRICT 2 STANDARDS</b>	
35.-42.	GRADING AROUND WINGWALLS (20.4) DETAIL OF HOT-MIX ASPHALT SHOULDER AT GUARD RAIL (23.4) SLOPED HEADWALL TYPE 1 FOR FIELD TILE OUTLETS (28.4) DELINEATOR AND POST ORIENTATION (37.4) TYPICAL BENCHING ON EXISTING EMBANKMENT (50.4) LAND SECTION & REFERENCE MARKERS (63.4) STOP LINE SIGN FOR TEMPORARY SIGNALS (99.4) EROSION CONTROL DETAILS FOR SILT FENCE (29.2) FIELD TILE JUNCTION VAULTS 600(24) AND 900(36) DIA. (30.2) INFORMATIONAL WARNING SIGN (FOR NARROW TRAVEL LANES) (39.2) WITNESS MARKER & PERMANENT SURVEY MARKERS, TYPE II (66.2) ENTRANCE SIGN FOR USE WITH TEMPORARY SIGNALS (75.2) STORM WATER POLLUTION PREVENTION PLAN (2.1) TYPICAL PAVEMENT MARKINGS (41.1)



FULL SIZE PLANS HAVE BEEN PREPARED USING STANDARD  
 ENGINEERING SCALES. REDUCED SIZED PLANS WILL NOT  
 CONFORM TO STANDARD SCALES. IN MAKING MEASUREMENTS  
 ON REDUCED PLANS, THE ABOVE SCALES MAY BE USED.

J.U.L.I.E.  
 JOINT UTILITY LOCATION INFORMATION FOR EXCAVATION  
 1-800-892-0123  
 OR 811

**PHENIX TOWNSHIP, SEC. 28, 33**

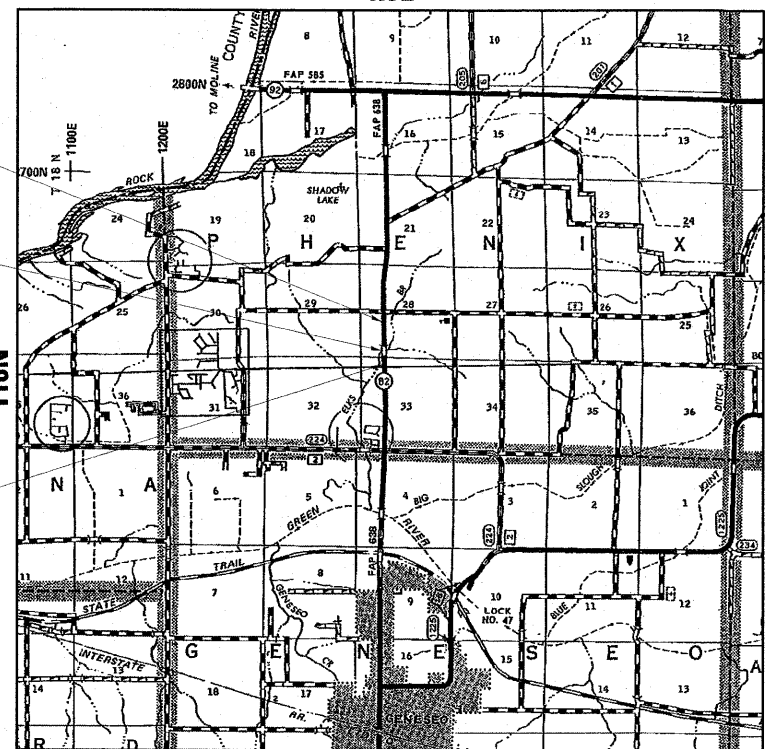
**CONTRACT NO. 64A04**

**FAP 638 (IL 82) SECTION 129BR HENRY COUNTY**

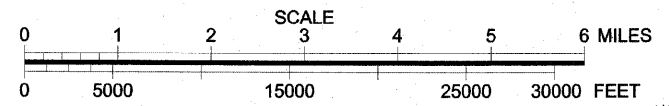
IMPROVEMENTS END  
 STA. 1361+00  
 SECTIONS ENDS  
 STA. 1360+50

STA. 1350+29.74  
 SN 037-2027  
 TRIPLE  
 9' SPAN X 9' RISE  
 BOX CULVERT

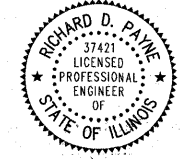
IMPROVEMENTS BEGIN  
 STA. 1347+59  
 SECTION BEGINS  
 STA. 1348+62



**LOCATION MAP**



**GROSS LENGTH = 1188 FT. = 0.23 MI.**  
**NET LENGTH = 1188 FT. = 0.23 MI.**



**ESCA**  
 CONSULTANTS, INC.

CIVIL & STRUCTURAL ENGINEERS  
 URBANA, ILLINOIS  
 (217)384-0505  
 PROJECT ENGINEER: ERIC HENKEL

DATE: 08/03/09  
 ILLINOIS PROFESSIONAL LICENSE NO. 37421  
 (EXPIRATION DATE: 11-30-09)

**PRINTED BY THE AUTHORITY**  
**OF THE STATE OF ILLINOIS**