

CHAIN IL82 DESCRIPTION

Chain IL82 contains:
20 CUR 200 CUR 210 220 CUR 230 72

Beginning chain IL82 description

Point 20 N 1,750,306.0710 E 2,298,872.5550 Sta 1205+21.7200

Course from 20 to PC 200 0° 23' 09.9713" Dist 1,797.7938

Curve Data

Curve 200
P.I. Station 1225+19.5138 N 1,752,303.8195 E 2,298,886.0176
Delta = 1° 58' 52.2273" (LT)
Degree = 0° 29' 43.2345"
Tangent = 200.0000
Length = 399.9601
Radius = 11,566.8918
External = 1.7289
Long Chord = 399.9402
Mid. Ord. = 1.7287
P.C. Station 1223+19.5138 N 1,752,103.8240 E 2,298,884.6698
P.T. Station 1227+19.4740 N 1,752,503.7420 E 2,298,880.4504
C.C. N 1,752,181.7701 E 2,287,318.0406
Back = 0° 23' 09.9714"
Ahead = 358° 24' 17.7441"
Chord Bear = 359° 23' 43.8578"

Course from PT 200 to PC 210 358° 24' 17.7441" Dist 628.9749

Curve Data

Curve 210
P.I. Station 1237+16.8489 N 1,753,500.7304 E 2,298,852.6879
Delta = 3° 41' 00.0000" (RT)
Degree = 0° 30' 00.2943"
Tangent = 368.4000
Length = 736.5462
Radius = 11,457.2825
External = 5.9213
Long Chord = 736.4194
Mid. Ord. = 5.9182
P.C. Station 1233+48.4489 N 1,753,132.4732 E 2,298,862.9425
P.T. Station 1240+84.9951 N 1,753,868.8858 E 2,298,866.1120
C.C. N 1,753,451.3940 E 2,310,315.7855
Back = 358° 24' 17.7441"
Ahead = 2° 05' 17.7441"
Chord Bear = 0° 14' 47.7441"

Course from PT 210 to 220 2° 05' 17.7441" Dist 4,677.7062

Point 220 N 1,758,543.4854 E 2,299,036.5628 Sta 1287+62.7013

Course from 220 to PC 230 2° 06' 56.2770" Dist 2,606.7891

Curve Data

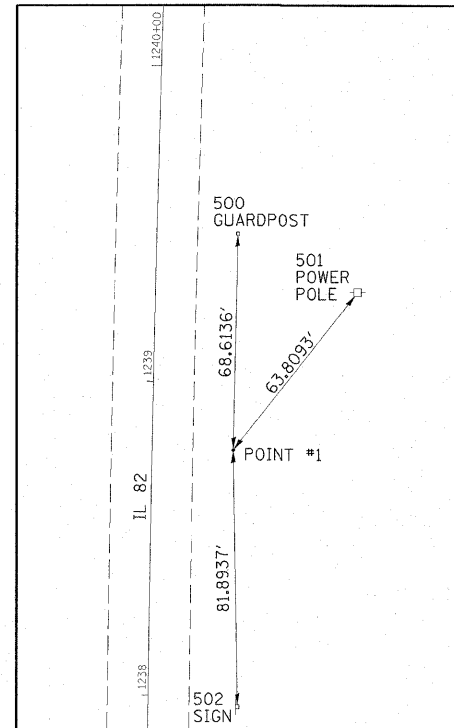
Curve 230
P.I. Station 1317+07.9420 N 1,761,486.7185 E 2,299,145.2904
Delta = 3° 18' 45.3391" (LT)
Degree = 0° 29' 22.2404"
Tangent = 338.4516
Length = 676.7147
Radius = 11,704.6920
External = 4.8923
Long Chord = 676.6204
Mid. Ord. = 4.8902
P.C. Station 1313+69.4904 N 1,761,148.4976 E 2,299,132.7960
P.T. Station 1320+46.2051 N 1,761,825.0963 E 2,299,138.2204
C.C. N 1,761,580.5922 E 2,287,436.0824
Back = 2° 06' 56.2770"
Ahead = 358° 48' 10.9379"
Chord Bear = 0° 27' 33.6075"

Course from PT 230 to 72 358° 48' 10.9379" Dist 5,906.9530

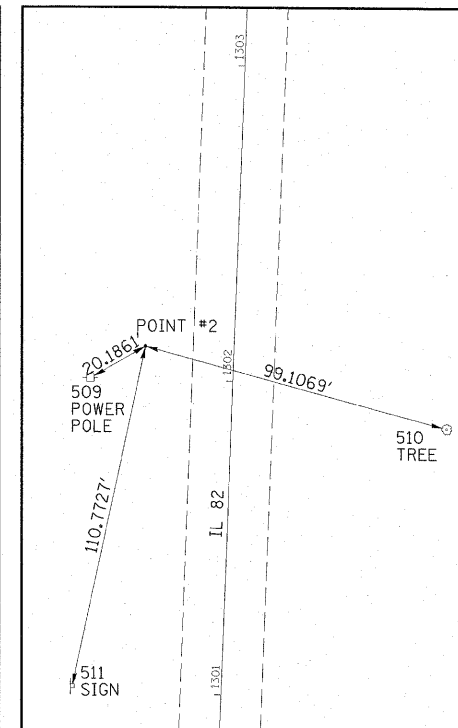
Point 72 N 1,767,730.7603 E 2,299,014.8276 Sta 1379+53.1581

Ending chain IL82 description

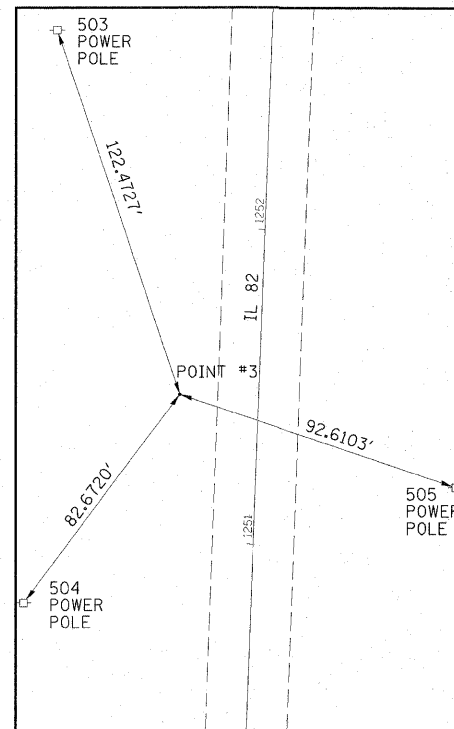
HORIZONTAL AND VERTICAL CONTROL



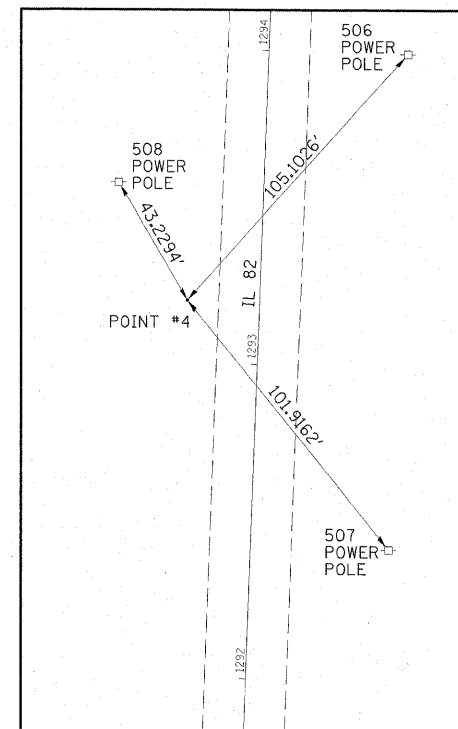
HORIZONTAL CONTROL POINT NO. 1



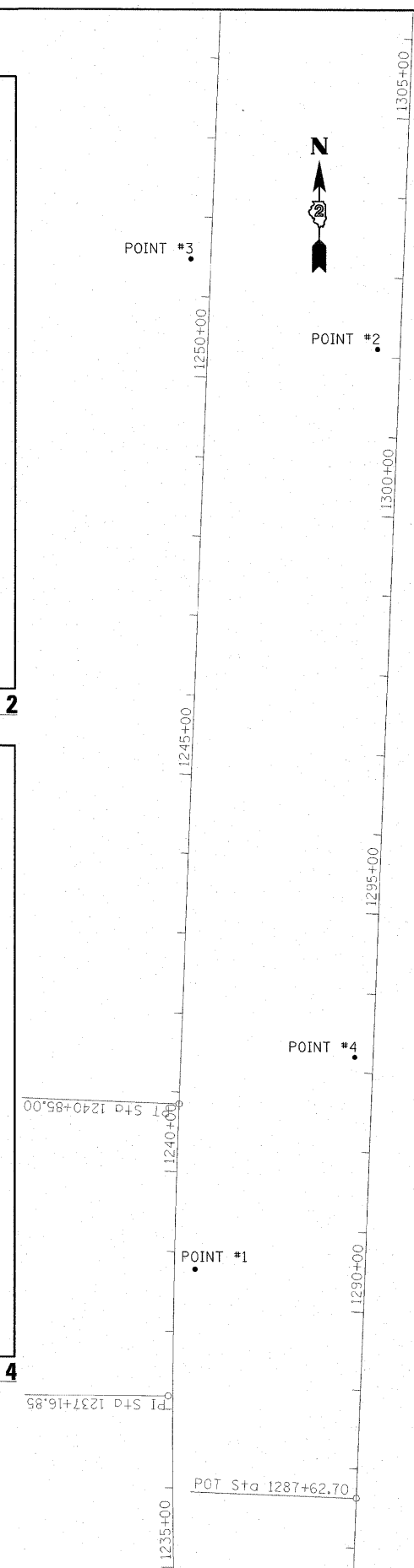
HORIZONTAL CONTROL POINT NO. 2



HORIZONTAL CONTROL POINT NO. 3



HORIZONTAL CONTROL POINT NO. 4



REFERENCE TIES				
POINT	CHAIN	STATION	OFFSET	DESCRIPTION
500	IL82	1239+47.2484	25.7424	GUARDPOST
501	IL82	1239+29.6963	64.3248	POWER POLE
502	IL82	1237+96.6006	28.3775	SIGN
503	IL82	1252+61.3100	-68.3481	POWER POLE
504	IL82	1250+78.8601	-72.2674	POWER POLE
505	IL82	1251+20.3804	63.7069	POWER POLE
506	IL82	1294+00.4809	44.1598	POWER POLE
507	IL82	1292+42.6514	43.8911	POWER POLE
508	IL82	1293+56.6562	-46.1638	POWER POLE
509	IL82	1301+99.2643	-45.2334	POWER POLE
510	IL82	1301+87.5835	68.4343	SIGN
511	IL82	1301+00.8610	-47.2991	TREE

HORIZONTAL CONTROL POINTS							
POINT	NORTH	EAST	ELEVATION	CHAIN	STATION	OFFSET	DESCRIPTION
1	1753662.1430	2298886.2210	0	IL82	1238+78.6471	25.7752	GPS CONTROL POINT
2	1759990.7950	2299061.8960	0	IL82	1302+09.9596	-28.1135	GPS CONTROL POINT
3	1754930.8370	2298879.7440	0		1251+46.7378	-25.0735	GPS CONTROL POINT
4	1759100.8420	2299034.1900	0		1293+19.5904	-22.9468	GPS CONTROL POINT

BENCH MARKS		
POINT	ELEVATION	DESCRIPTION
76	619.0300	Chiseled Square on SE Wingwall of box culvert over Elks Branch, Rte 82, Hse #24899
86	627.7670	Chiseled Square on HW, SE corner Rte 82 and Road, 2550N & 1420E