



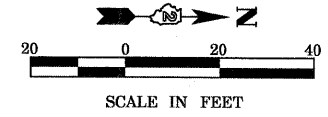
DATE	
BY	
PLANNED	
ALIGNED	
CHECKED	
NO.	

DATE	
BY	
PROFILING	
GRADES	
CHECKED	
NO.	

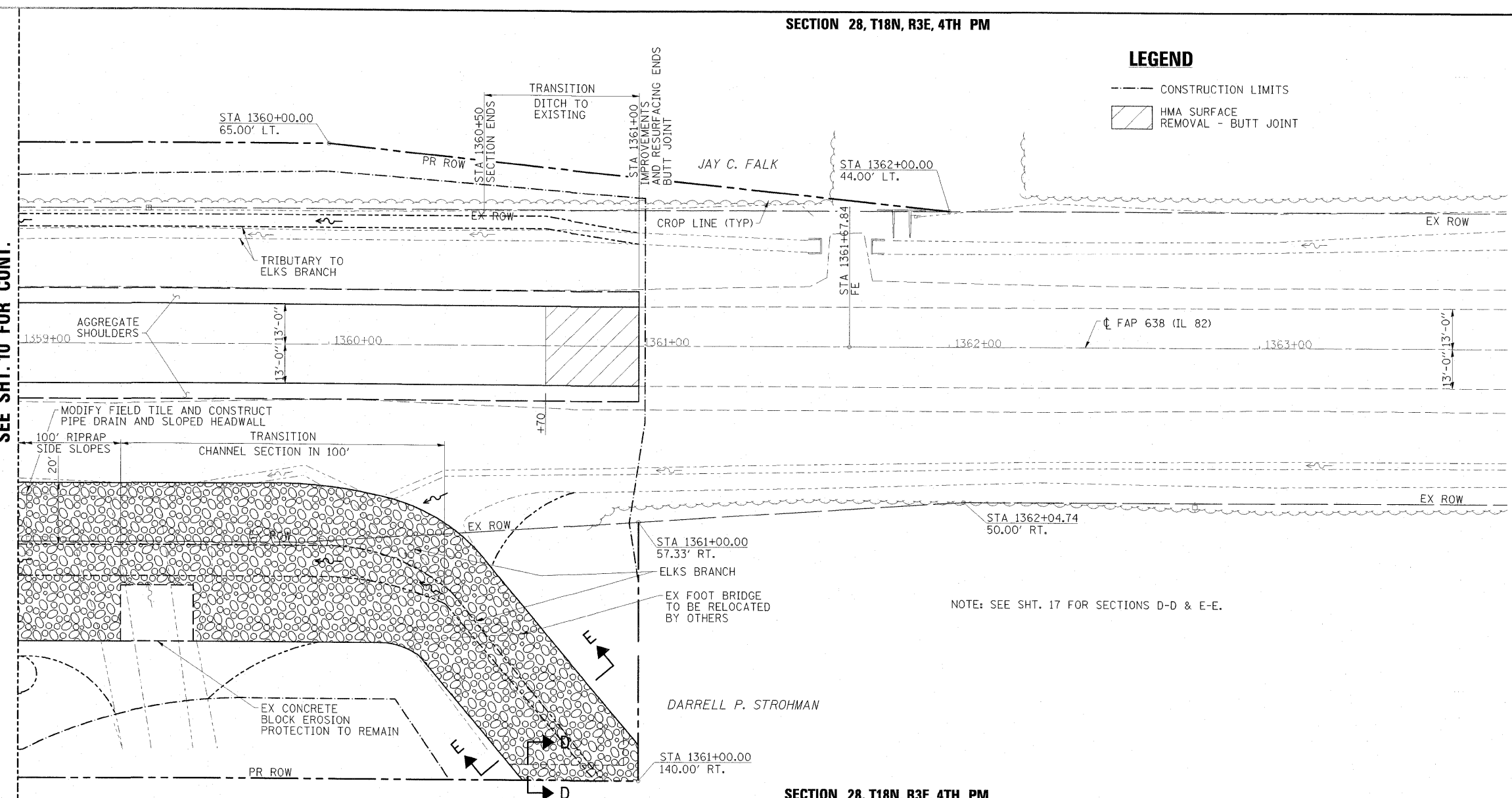
SECTION 28, T18N, R3E, 4TH PM

LEGEND

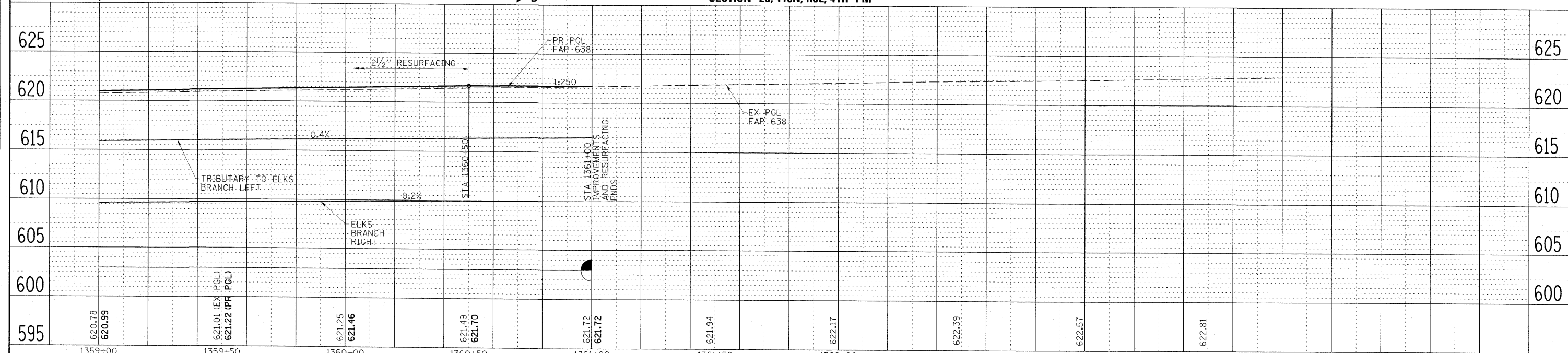
- CONSTRUCTION LIMITS
- [Hatched Box] HMA SURFACE REMOVAL - BUTT JOINT



MATCH LINE STA 1359+00
SEE SHT. 10 FOR CONT.



SECTION 28, T18N, R3E, 4TH PM



FILE NAME = 0264044-sh1-plan-f01.dgn	USER NAME = HAS	DESIGNED - JMS/ELH	REVISED -	STATE OF ILLINOIS DEPARTMENT OF TRANSPORTATION	FAP 638 (IL 82) PLAN AND PROFILE STA 1359+00 TO 1363+80	F.A.P. RTE = 638	SECTION = 129BR	COUNTY = HENRY	TOTAL SHEETS = 42	SHEET NO. = 12
SCALE: (HORIZ) 1"=20' (VERT) 1"=5'	PLOT SCALE = 20.0000' / IN.	DRAWN - HAS	REVISED -			CONTRACT NO. 64A04				
PLOT DATE = 9/9/2009 9:41:58 AM	DATE = 09/08/09	CHECKED - ELH	REVISED -			FED. ROAD DIST. NO. ILLINOIS FED. AID PROJECT				
		DATE = 09/08/09	REVISED -			SCALE: 1"=20'-0" SHEET NO. 4 OF 4 SHEETS STA. 1359+00 TO STA. 1363+80				