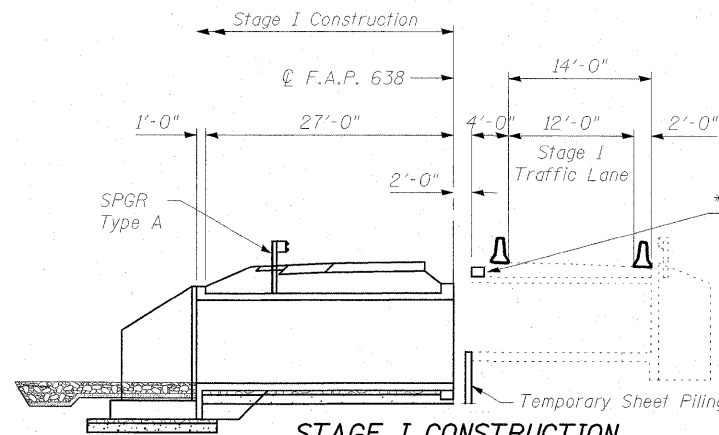


**STAGE I REMOVAL**

(Looking North) (Dim. at right L's)

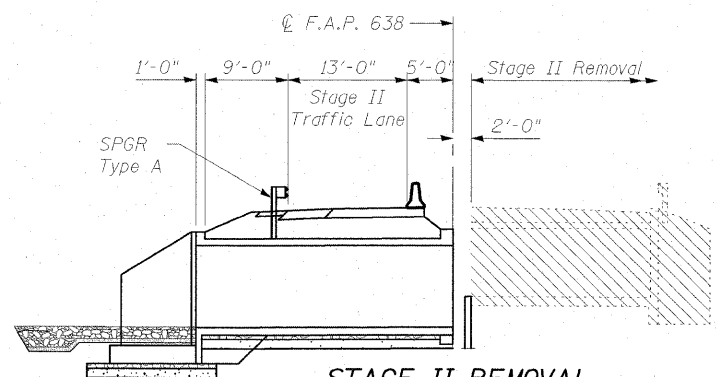
Note:  
Removal of existing metal handrail is included in Removal of Existing Structures.



**STAGE I CONSTRUCTION**

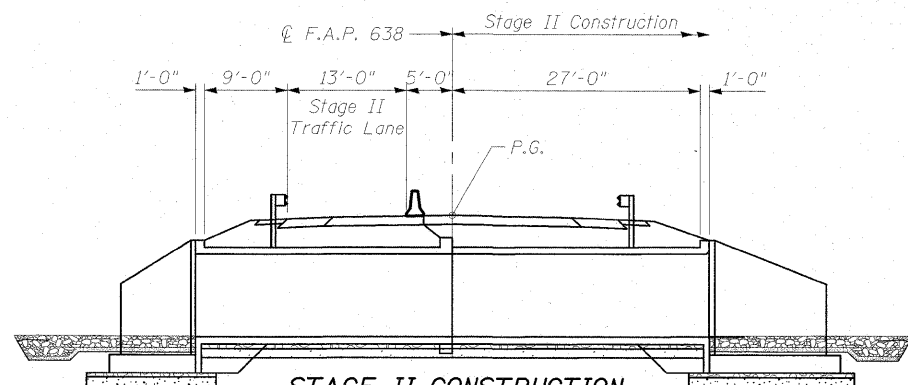
(Looking North) (Dim. at right L's)

\* Temporary blocking on top of exist. culvert to retain exist. roadbed Cost included with Concrete Box Culverts.



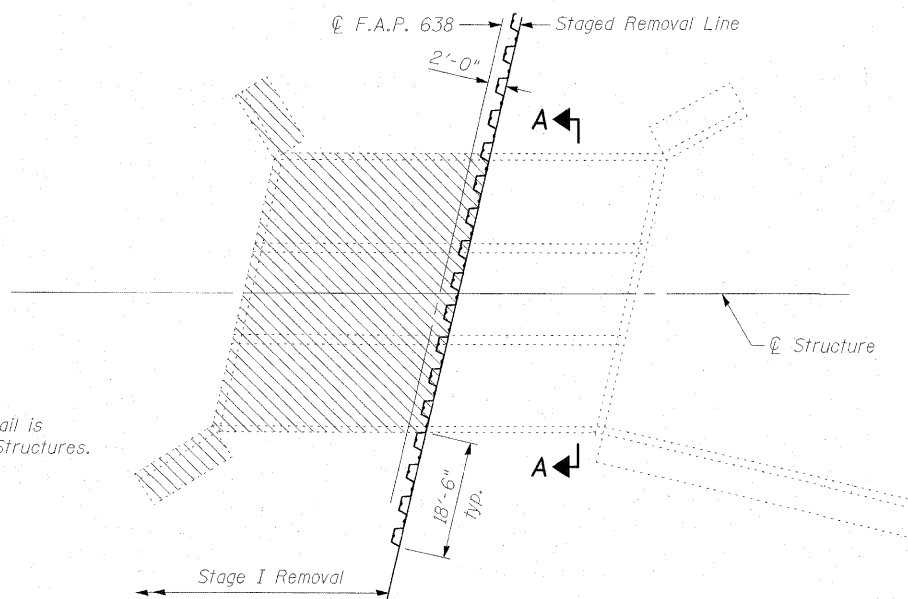
**STAGE II REMOVAL**

(Looking North) (Dim. at right L's)



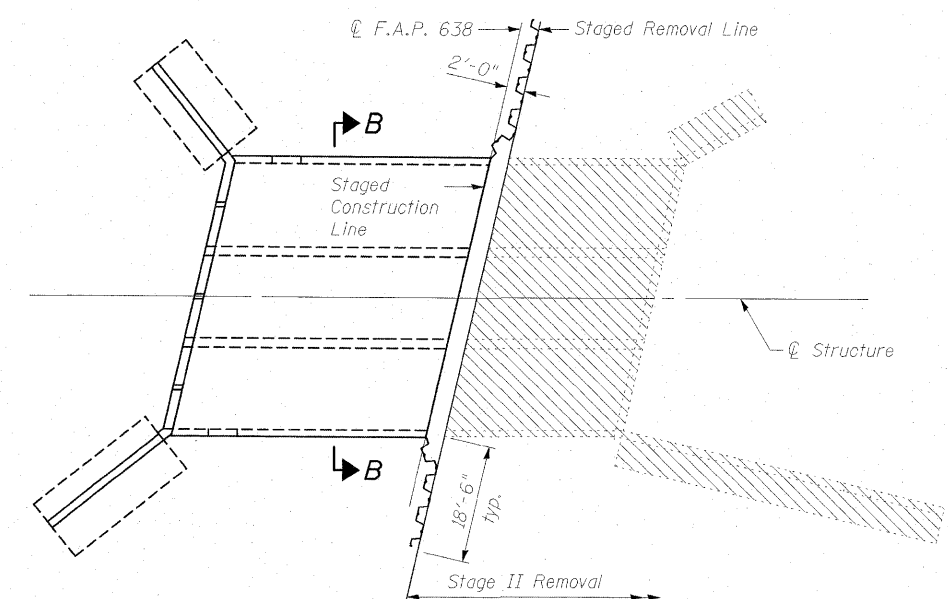
**STAGE II CONSTRUCTION**

(Looking North) (Dim. at right L's)



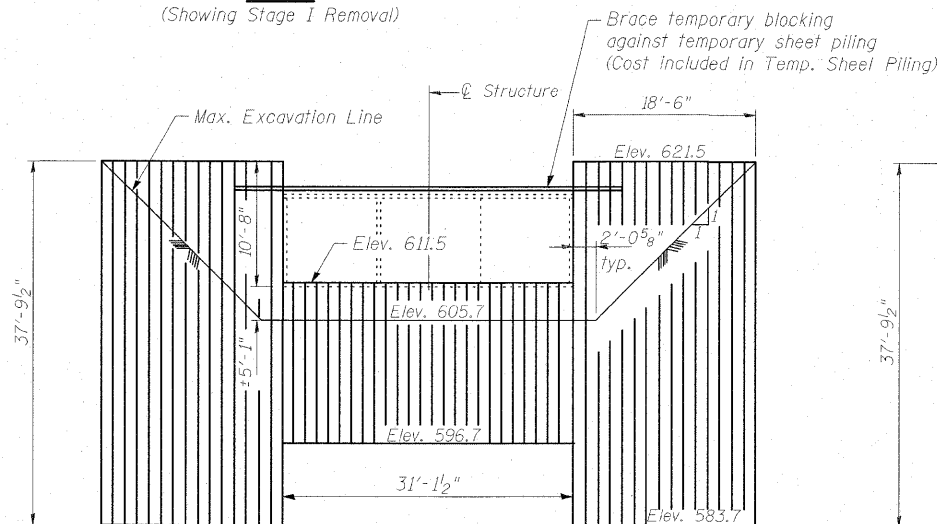
**PLAN**

(Showing Stage I Removal)



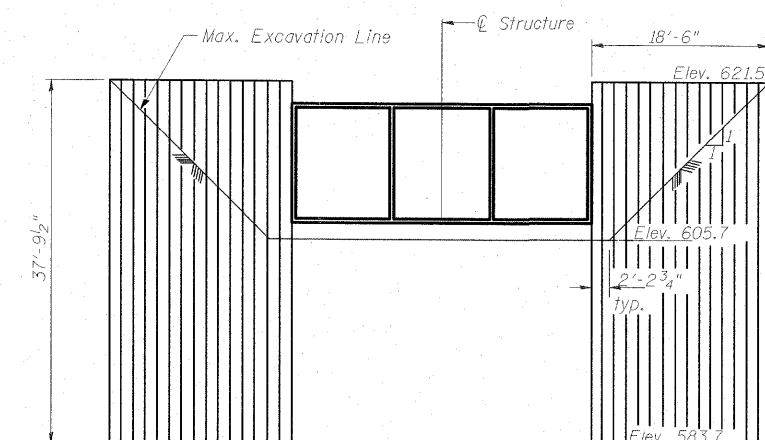
**PLAN**

(Showing Stage II Removal)



**VIEW A-A**

Showing Temporary Sheet Piling for Stage I Construction (Dim along skew)



**VIEW B-B**

Showing Temporary Sheet Piling for Stage II Construction (Dim along skew)

\* The Contractor shall submit the design calculations and details for the temporary blocking for review and approval by the Engineer. Cost included in Temporary Sheet Piling.

**CONSTRUCTION SEQUENCE**

- ① After the temporary widening and traffic control barriers for Stage I traffic have been installed and traffic directed to the Northbound lane, install temporary sheet piling along stage removal line beyond exist. culvert limits.
- ② Excavate along exist. outside culvert sidewalls and sawcut exist. sidewalls and top and bottom slab at the Stage Removal Line prior to Stage I removal of the top slab.
- ③ Proceed with Stage I Removal
- ④ Install additional Sheet Piling along the stage removal line below the existing culvert invert elevation.
- ⑤ Proceed with Stage I Construction
- ⑥ Excavate along existing outside culvert sidewalls prior to Stage II removal of the top slab.
- ⑦ Proceed with Stage II Removal
- ⑧ Proceed with Stage II Construction

**TEMPORARY SHEET PILING DATA**

**OUTSIDE CULVERT LIMITS**

Top Elev. : 621.5  
Bottom Elev. : 583.7  
Embedment : 22'  
Min. Section Modulus : 48.1 in<sup>3</sup>/ft

**INSIDE CULVERT LIMITS**

Top Elev. : 611.5  
Bottom Elev. : 596.7  
Embedment : 9'  
Min. Section Modulus : 4 in<sup>3</sup>/ft

Notes:  
Hatched areas indicate Removal of Existing Structures.  
See Roadway Plans for quantity of Temporary Concrete Barrier.  
If the Contractor chooses to alter the temporary cantilevered sheet piling design requirements shown on the plans a design submittal including plan details and calculations will be required for review and approval by the Engineer.  
For details of Temporary Concrete Barrier See Sheet 3 of 8.

**STAGED CONSTRUCTION  
IL ROUTE 82 OVER ELKS BRANCH  
STATION 1350+29.74  
STRUCTURE NO 037-2027**

COOMBE-BLOXDORF P.C. Engineers / Land Surveyors Springfield, Illinois Design Firm License No. 184-002703	PROJECT NO. 08047	SHEET NO. 2  8 SHEETS	F.A.P. RTE. 638	SECTION 129BR	COUNTY HENRY	TOTAL SHEETS 42	SHEET NO. 19
	DATE / /		CONTRACT NO. 64A04				
DESIGN BY / /	CHECKED BY CFC	FED. ROAD DIST. NO.		ILLINOIS FED. AID PROJECT			

PLOT DATE = 7/29/2009  
 FILE NAME = Y:\1001\8929-03\_64A04\0372027-64A04-Vr-StgPnet.dgn  
 PLOT SCALE = 1/32" = 1' / IN.  
 USER NAME = HAS