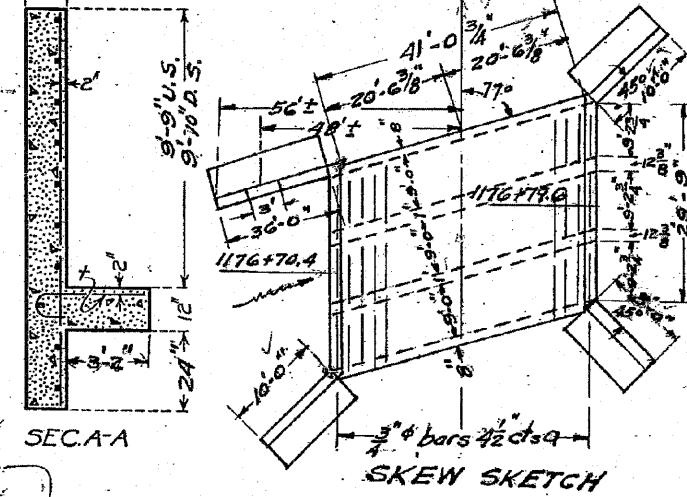
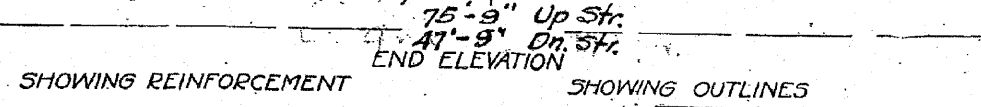
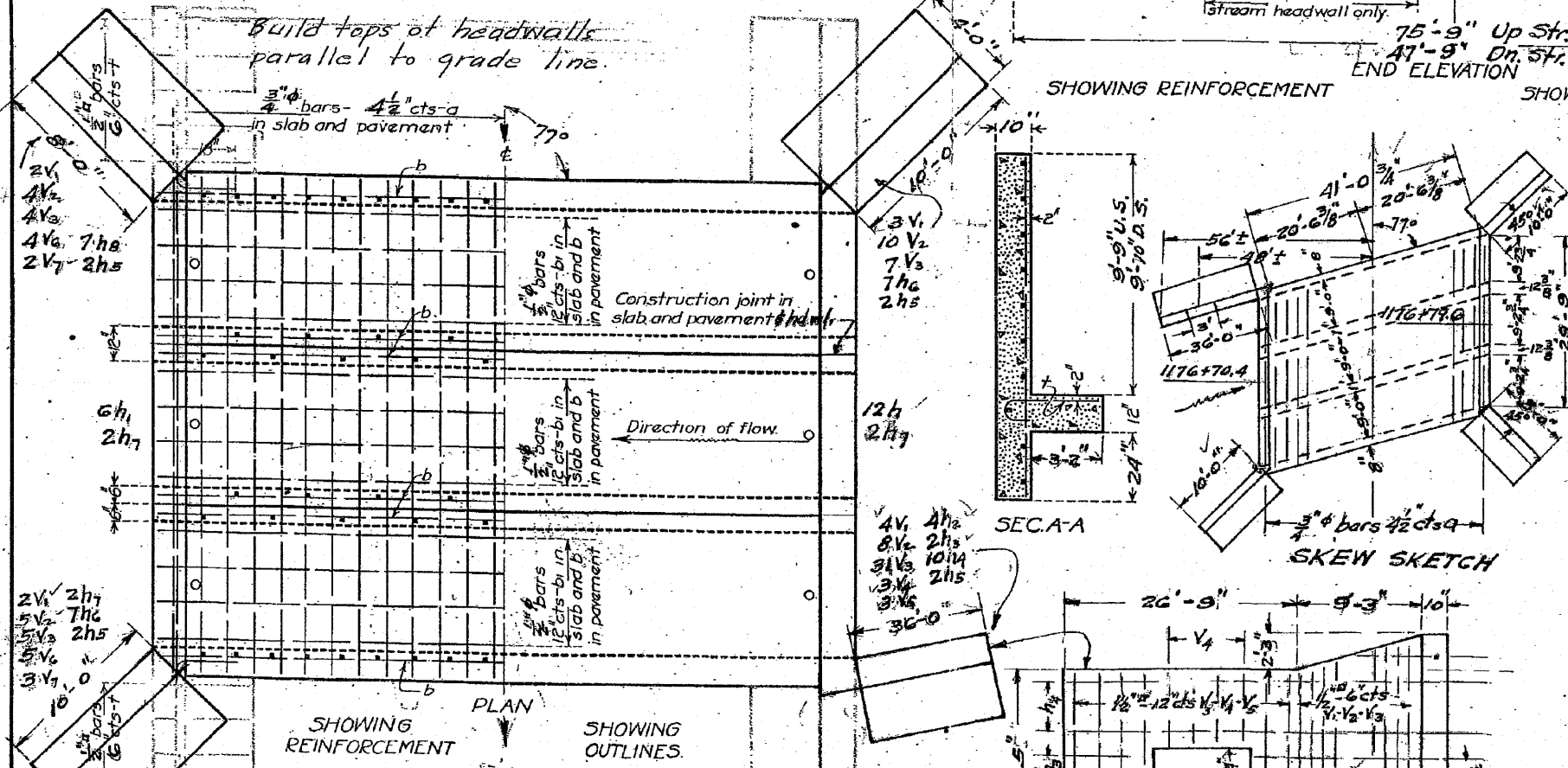
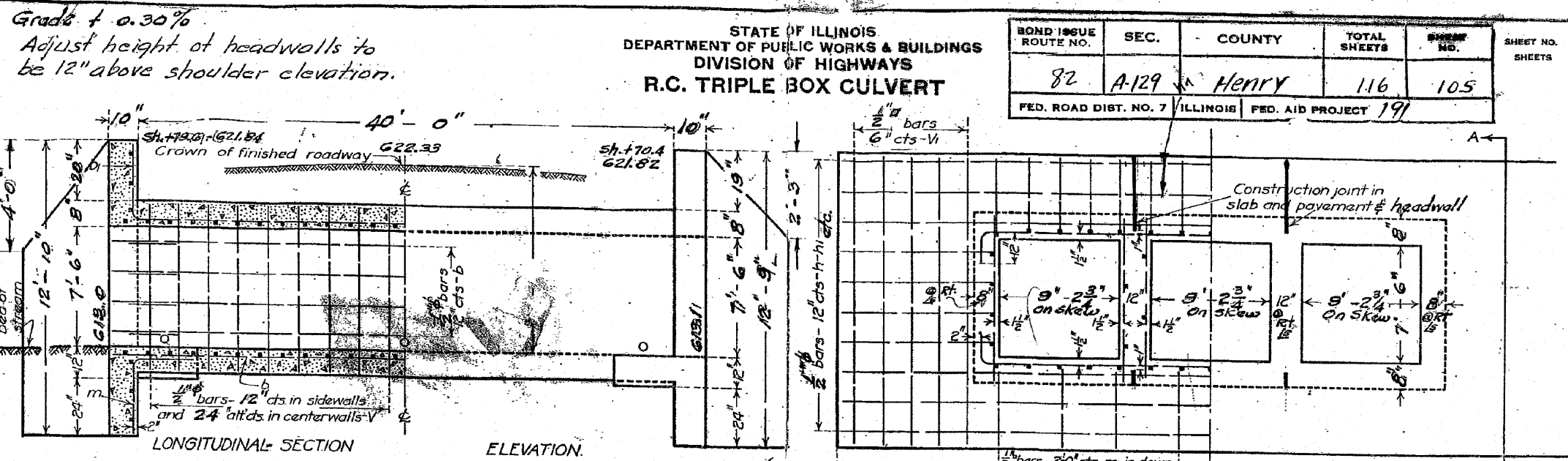


STATE OF ILLINOIS  
DEPARTMENT OF PUBLIC WORKS & BUILDINGS  
DIVISION OF HIGHWAYS  
R.C. TRIPLE BOX CULVERT

BOND ISSUE ROUTE NO.	SEC.	COUNTY	TOTAL SHEETS	SHEET NO.	SHEET NO. SHEETS
82	A-129	Henry	116	105	
FED. ROAD DIST. NO. 7 ILLINOIS FED. AID PROJECT 191					



h <sub>6</sub>	14	1/2"	11'-6"
h <sub>7</sub>	4	1/2"	9'-6"
h <sub>8</sub>	7	1/2"	9'-6"

BILL OF MATERIAL

BARS	NO.	SIZE	LENGTH
V	164	1/2" φ	8'-6"
Vi	11	1/2"	12'-0"
V <sub>2</sub>	27	1/2"	11'-0"
h	12	1/2" φ	20'-6"
h <sub>1</sub>	6	1/2"	25'-0"
V <sub>3</sub>	47	1/2"	10'-0"
a	222	3/4"	32'-6"
V <sub>4</sub>	3	1/2"	9'-0"
b	116	1/2"	22'-0"
bi	60	1/2"	23'-6"
V <sub>5</sub>	3	1/2"	2'-6"
t	102	1/2"	4'-6"
m	12	1/2"	5'-0"

Reinforcing Steel-Lbs 16436  
Concrete-Cu.Yds. 139.0

Class X Concrete to be used throughout

V <sub>6</sub>	9	1/2"	9'-0"
V <sub>7</sub>	5	1/2"	8'-0"
h <sub>2</sub>	4	1/2" φ	14'-0"
h <sub>3</sub>	2	1/2" φ	6'-6"
h <sub>4</sub>	10	1/2" φ	20'-0"
h <sub>5</sub>	8	1/2" φ	18'-0"

COMPLETED - M. Mahawon  
CHECKED - C. J. McGallister  
DRAWN - H. B. 71  
CHECKED - C. J. M.  
SPECIAL ASSEMBLED - F. J. 3-11-01

EXAMINED - M. J. P. 30-31  
APPROVED - [Signature]  
ENGINEER OF DESIGN

Sta. 1176+75  
Rte 80 Sec. 129

FILE NAME =	USER NAME = HAS	DESIGNED - JMS	REVISED -
D264A04-shr-rom01.dgn		DRAWN - HAS	REVISED -
PLOT SCALE = 8.0833' / IN.		CHECKED - ELH	REVISED -
PLOT DATE = 7/29/2009 7:23:43 AM		DATE - 07/17/09	REVISED -

STATE OF ILLINOIS  
DEPARTMENT OF TRANSPORTATION

EXISTING STRUCTURE PLANS

SCALE: SHEET NO. 1 OF 1 SHEETS STA. TO STA.

FOR REFERENCE ONLY

F.A.P. RTE.	SECTION	COUNTY	TOTAL SHEETS	SHEET NO.
638	129BR	HENRY	42	26
CONTRACT NO. 64A04				
FED. ROAD DIST. NO. ILLINOIS FED. AID PROJECT				