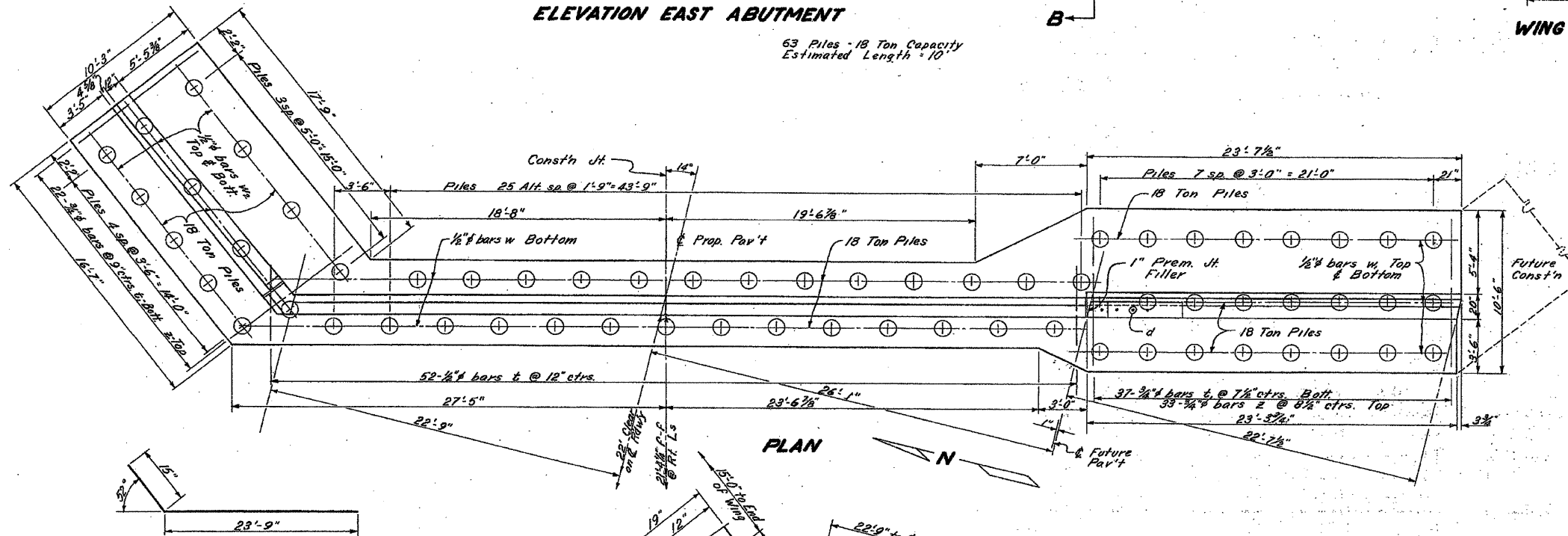
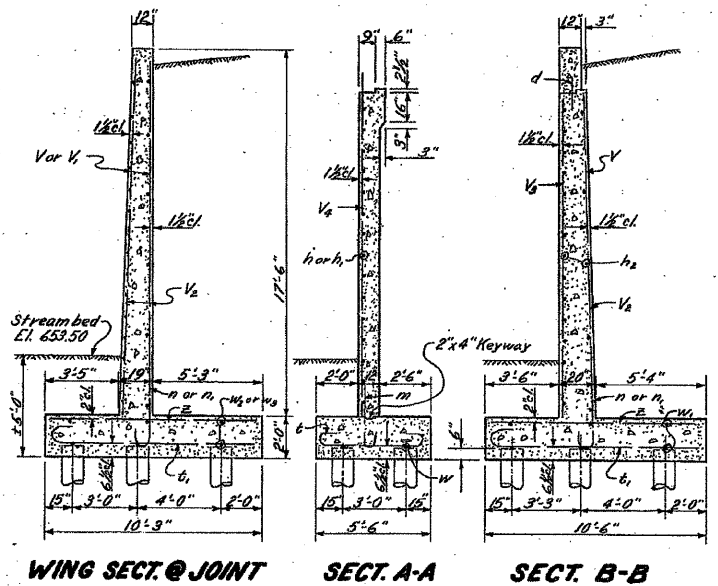
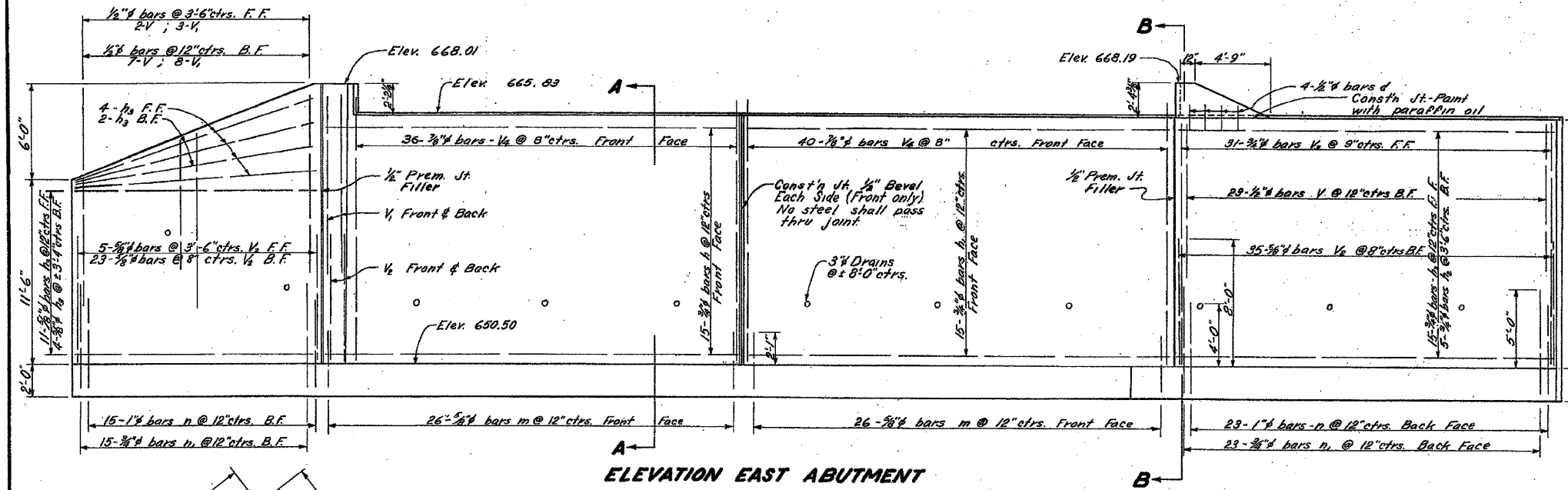


STATE OF ILLINOIS
DEPARTMENT OF PUBLIC WORKS & BUILDINGS
DIVISION OF HIGHWAYS

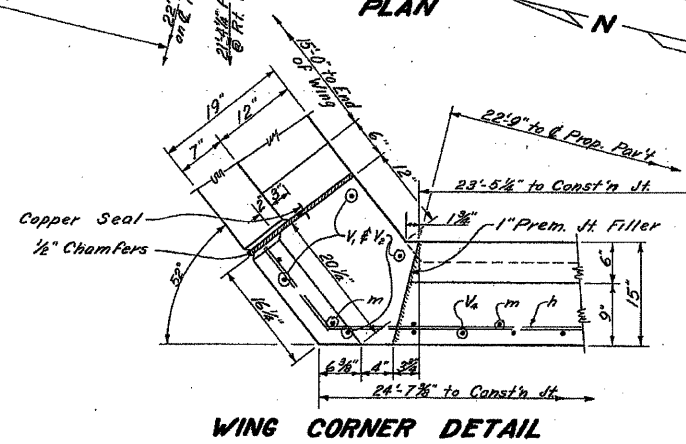
BOND SHEET NO.	SECTION	COUNTY	TOTAL SHEETS	SHEET NO.
FA 7	31-1B	Lee Whiteside	29	6
FED. ROAD DIST. NO. 7		ILLINOIS FED. AID PROJECT		SHEET NO. 2
				3 SHEETS



BILL OF MATERIAL
EAST ABUTMENT

BAR	NO	SIZE	LENGTH	SHAPE
h	15	3/4"	25'-0"	—
h ₁	15	3/4"	26'-0"	—
h ₂	20	3/4"	23'-0"	—
h ₃	21	3/4"	15'-0"	—
V	32	1/2"	9'-0"	—
V ₁	15	1/2"	11'-0"	—
V ₂	67	3/8"	8'-0"	—
V ₃	31	3/4"	15'-0"	—
V ₄	76	3/8"	16'-6"	—
n	38	1"	6'-9"	C
n ₁	38	3/4"	7'-6"	C
m	52	3/8"	4'-6"	—
t	52	1/2"	6'-6"	C
t ₁	59	3/4"	11'-9"	C
z	55	3/4"	10'-0"	—
w	6	1/2"	19'-0"	—
w ₁	6	1/2"	24'-0"	—
w ₂	6	1/2"	17'-0"	—
d	4	1/2"	1'-6"	—
Class X Concrete			Cu. Yds.	113.3
Reinforcement Bars			Lbs.	9945
Untreated Piles (10 ft)			Unft.	620
Test Piles			Eq.	One
Class A Excav for Str.			Cu. Yds.	320
Class B Excav for Str.			Cu. Yds.	250

STANDARD	COMPUTED	<i>H. Baumann</i>	EXAMINED	June 24 1954
	CHECKED	<i>Y. C. Chang</i>		W. E. Hanson
SPECIAL	DRAWN	<i>H. Baumann</i> G. S. Cole	PASSED	<i>[Signature]</i>
	CHECKED	<i>Y. C. Chang</i>	APPROVED	<i>[Signature]</i>
	ASSEMBLED			
	CHECKED			



BARS - n, m & t

	A	B	C	D
n	7"	14"	5'-0"	8"
n ₁	6"	11"	6'-1"	6"
m	6"	9"	3'-3"	5"
t ₁	7"	11"	9'-9"	6"

FOR INFORMATIONAL PURPOSES ONLY

F.A.P. RTE.	SECTION	COUNTY	TOTAL SHEETS	SHEET NO.
561	31-1BR-1 & 31-1BR-2	LEE	92	92E
		CONTRACT NO. 64B05		
FED. ROAD DIST. NO.		ILLINOIS FED. AID PROJECT		

△ SHEET ADDED 10/23/09