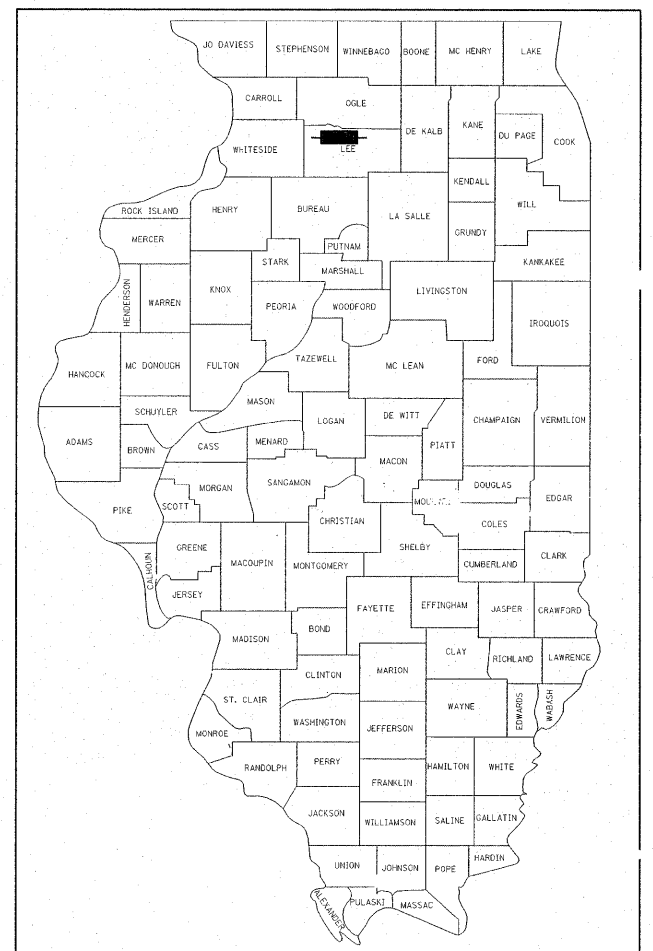


STATE OF ILLINOIS
DEPARTMENT OF TRANSPORTATION
DIVISION OF HIGHWAYS
PROPOSED
HIGHWAY PLANS

F.A.P. RTE.	SECTION	COUNTY	TOTAL SHEETS	SHEET NO.
561	31-1BR-1 & 31-1BR-2	LEE	92	1
FED. ROAD DIST. NO.		ILLINOIS	CONTRACT NO. 64B05	

D-92-067-05



LOCATION OF SECTION INDICATED THUS: — ■ —

STATE OF ILLINOIS
DEPARTMENT OF TRANSPORTATION
DIVISION OF HIGHWAYS

SUBMITTED August 6, 2009
George F. Ryan
 DEPUTY DIRECTOR OF HIGHWAYS, REGION ENGINEER

October 2, 2009
Charles J. Ingersoll
 ENGINEER OF DESIGN AND ENVIRONMENT

October 2, 2009
Christine M. Reed
 DIRECTOR OF HIGHWAYS, CHIEF ENGINEER

ENGINEERS SIGNATURE BOX

7/29/09 11/30/09
 SIGNED LIC. EXP. DATE

PRINTED BY THE AUTHORITY
OF THE STATE OF ILLINOIS

FOR INDEX OF SHEETS, SEE SHEET NO. 2
 FOR STATE STANDARDS SEE SHEET NO. 2

ROADWAY CLASSIFICATION
 F.A.P. ROUTE 561 (IL 2) – PRINCIPAL ARTERIAL
 ADT 7200 (2008) – 96% PV; 3% SU; 1% MU
 DESIGN SPEED: 70 MPH
 DESIGN POLICY: 3R

PREPARED BY:

 7615 NORTH HARKER DRIVE
 PEORIA, ILLINOIS 61615
 TEL 309-693-7615
 FAX 309-693-7616

SECTION 31-1BR-1 ENDS
 STA. 71+38.03

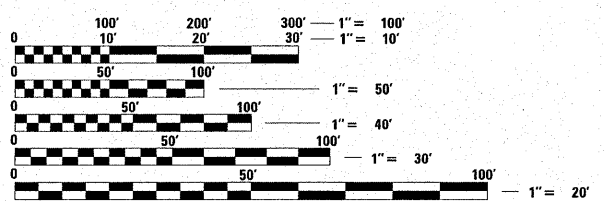
SECTION 31-1BR-1 REMOVE AND REPLACE
 STRUCTURE CARRYING IL ROUTE 2 OVER
 LITTLE CREEK
 EX. S.N. 052-0014
 PR. S.N. 052-0078

SECTION 31-1BR-1 BEGINS
 STA. 64+03.75

SECTION 31-1BR-2 BEGINS
 STA. 112+62.17

SECTION 31-1BR-2 REMOVE AND REPLACE
 STRUCTURE CARRYING IL ROUTE 2 OVER
 AN UNNAMED TRIBUTARY TO THE ROCK
 RIVER
 EX. S.N. 052-0015
 PR. S.N. 052-0079

SECTION 31-1BR-2 ENDS
 STA. 120+07.62

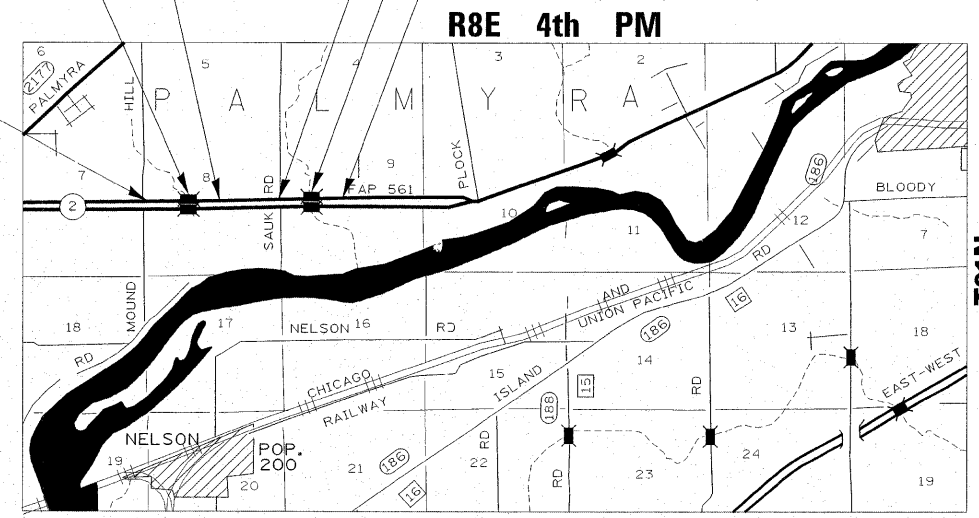


FULL SIZE PLANS HAVE BEEN PREPARED USING STANDARD
 ENGINEERING SCALES. REDUCED SIZED PLANS WILL NOT
 CONFORM TO STANDARD SCALES. IN MAKING MEASUREMENTS
 ON REDUCED PLANS, THE ABOVE SCALES MAY BE USED.

J.U.L.I.E.
 JOINT UTILITY LOCATION INFORMATION FOR EXCAVATION
 1-800-892-0123
 OR 811

PROJECT ENGINEER REBECCA MARRUFFO
 PROJECT MANAGER ED CONDERMAN 815-284-5947

CONTRACT NO. 64B05



PALMYRA TOWNSHIP SECTIONS 8 & 9

NET LENGTH OF PROJECT = 1480 LIN. FEET = 0.280 MILES
GROSS LENGTH OF PROJECT = 1480 LIN. FEET = 0.280 MILES