
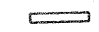
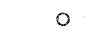



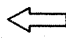
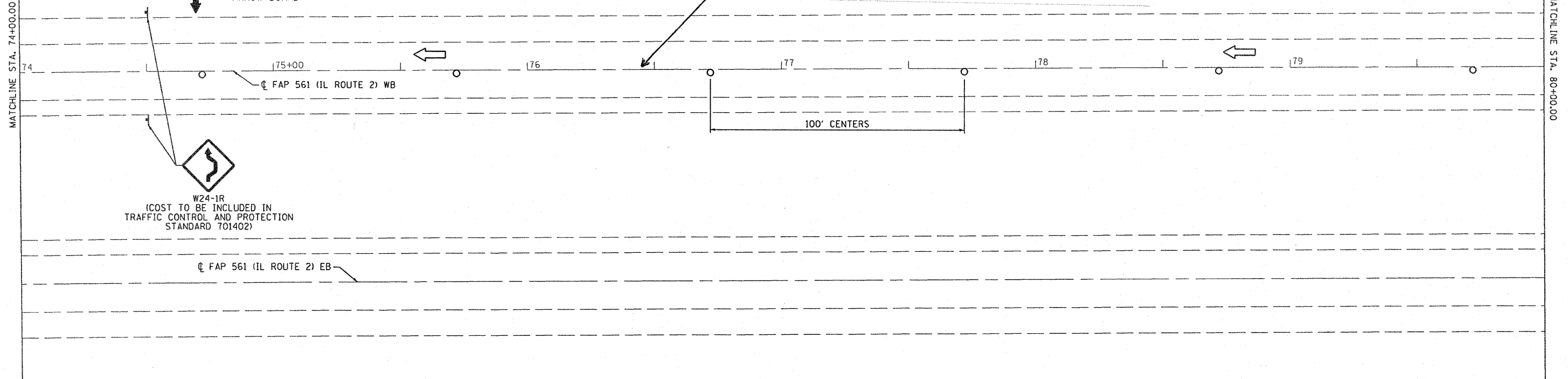


STAGING LEGEND

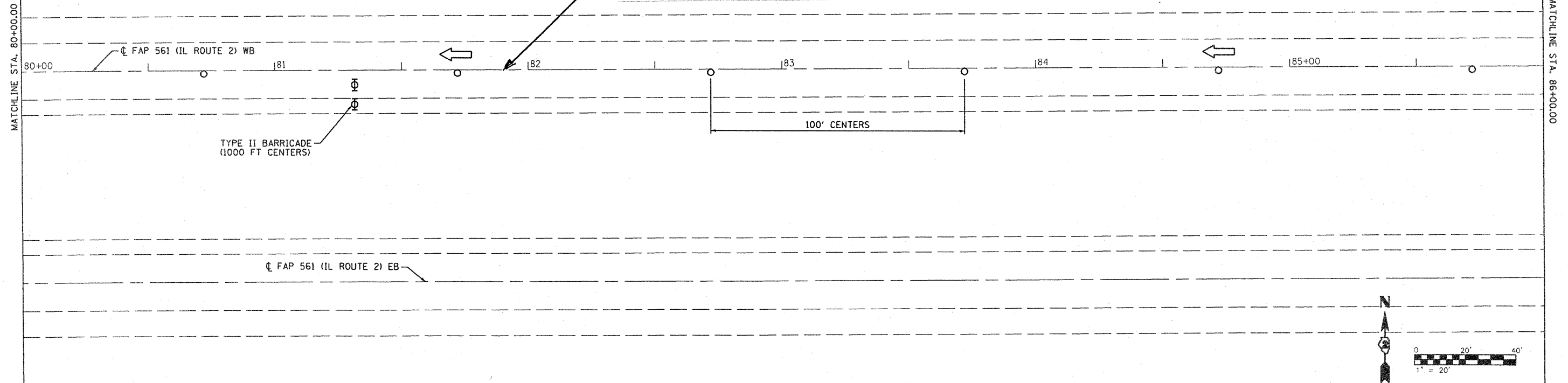
-  WORK ZONE
-  TEMPORARY CONCRETE BARRIER
-  BARRICADE, OR DRUM WITH STEADY BURNING LIGHTS
-  ARROW BOARD
-  TYPE II BARRICADE, DRUM, OR VERTICAL BARRICADE WITH STEADY BURN MONODIRECTIONAL LIGHT
-  DIRECTION INDICATOR BARRICADE WITH STEADY BURN MONODIRECTIONAL LIGHT
-  LANE OPEN TO TRAFFIC

TEMPORARY PAINT PAVEMENT MARKING LINE 4" - YELLOW
(STA. 71+22.00 TO STA. 102+50.00, 0.0'LT)

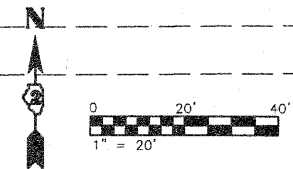


W24-1R
(COST TO BE INCLUDED IN TRAFFIC CONTROL AND PROTECTION STANDARD 701402)

TEMPORARY PAINT PAVEMENT MARKING LINE 4" - YELLOW
(STA. 71+22.00 TO STA. 102+50.00, 0.0'LT)



TYPE II BARRICADE
(1000 FT CENTERS)



MAUREN & STUTZ, INC.
ENGINEERS SURVEYORS

FILE NAME =	USER NAME = #USER#	DESIGNED - JDS	REVISED -	STATE OF ILLINOIS DEPARTMENT OF TRANSPORTATION	IL ROUTE 2 WB STAGE 2 STAGING PLAN	F.A.P. RTE. 561	SECTION 31-1BR-1 & 31-1BR-2	COUNTY LEE	TOTAL SHEETS 92	SHEET NO. 28		
\$FILE#		DRAWN - WLL	REVISED -			SCALE:	SHEET NO. OF SHEETS	STA. TO STA.	CONTRACT NO. 64B05			
		CHECKED - GBM	REVISED -									
		DATE -	REVISED -									
						FED. ROAD DIST. NO. ILLINOIS FED. AID PROJECT						