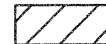
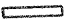




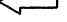
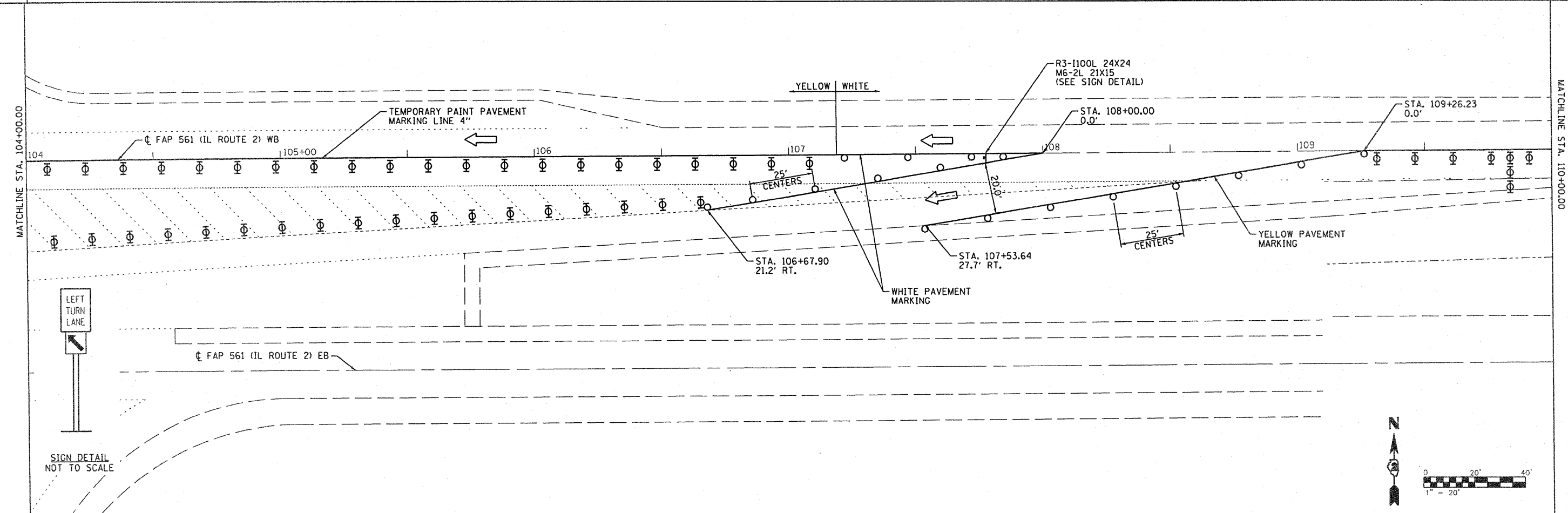
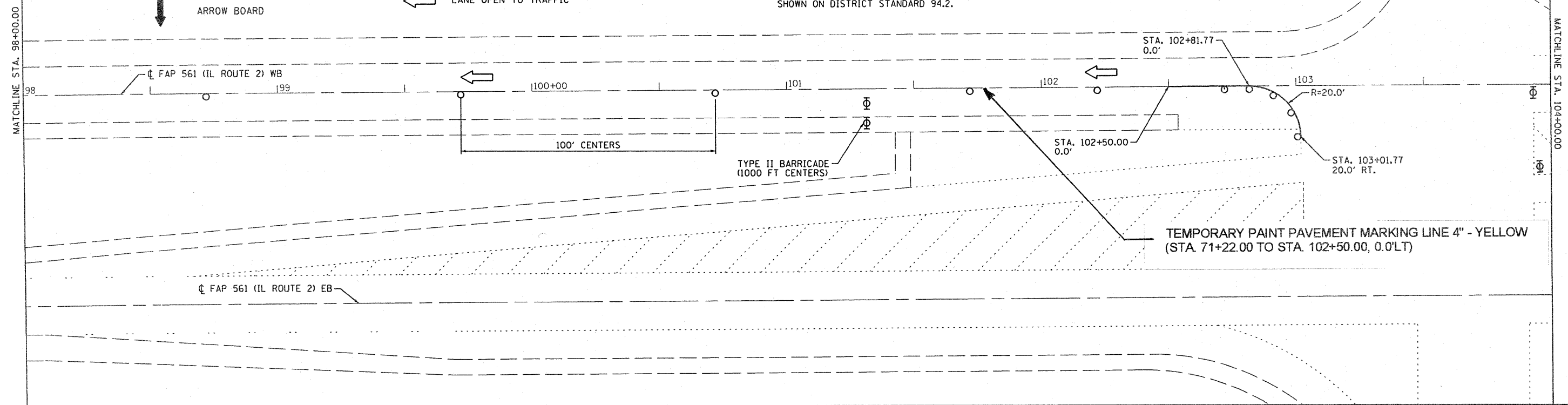


**STAGING LEGEND**

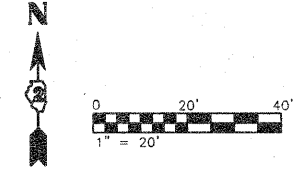
-  WORK ZONE
-  TEMPORARY CONCRETE BARRIER
-  BARRICADE, OR DRUM WITH STEADY BURNING LIGHTS
-  ARROW BOARD
-  TYPE II BARRICADE, DRUM, OR VERTICAL BARRICADE WITH STEADY BURN MONODIRECTIONAL LIGHT
-  DIRECTION INDICATOR BARRICADE WITH STEADY BURN MONODIRECTIONAL LIGHT
-  LANE OPEN TO TRAFFIC

NOTE:  
 1. THE INTERSECTION OF IL 2 AND SAUK RD. SHALL REMAIN OPEN DURING CONSTRUCTION. THE LEFT TURN LANE FROM IL 2 ONTO SAUK ROAD SHALL REMAIN OPEN. THE TRAFFIC CONTROL AT THE LEFT TURN SHALL BE CONFIGURED AS SHOWN ON REGION 2/DISTRICT 2 STANDARD 94.2 TRAFFIC CONTROL AND PROTECTION AT TURN BAYS (TO REMAIN OPEN TO TRAFFIC).  
 2. DEVICES USED FOR TRAFFIC CONTROL AND PROTECTION AT TURN BAYS IS SHOWN ON DISTRICT STANDARD 94.2.



MAURER & STUTZ, INC.  
ENGINEERS SURVEYORS

SIGN DETAIL NOT TO SCALE



FILE NAME =	USER NAME = #USER#	DESIGNED - JDS	REVISED -	<b>STATE OF ILLINOIS DEPARTMENT OF TRANSPORTATION</b>	<b>IL ROUTE 2 WB STAGE 2 STAGING PLAN</b>	F.A.P. RTE. 561	SECTION 31-1BR-1 & 31-1BR-2	COUNTY LEE	TOTAL SHEETS 92	SHEET NO. 30	
#FILE#		DRAWN - WLL	REVISED -			SCALE:	SHEET NO. OF SHEETS	STA. TO STA.	CONTRACT NO. 64B05		FED. ROAD DIST. NO. [ILLINOIS] FED. AID PROJECT
		CHECKED - GBM	REVISED -								
		DATE -	REVISED -								