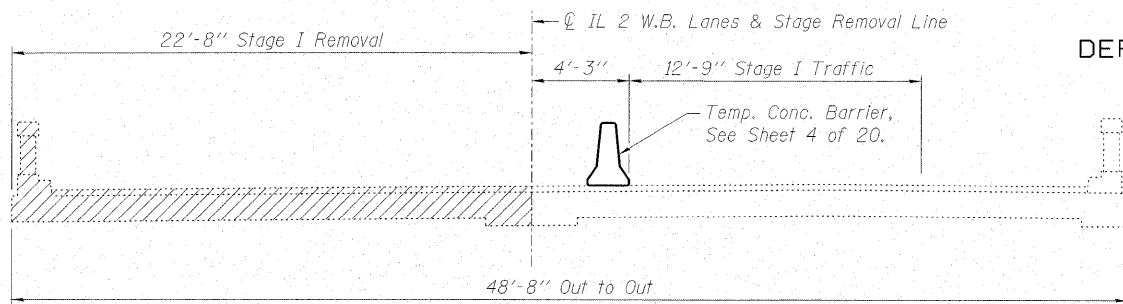
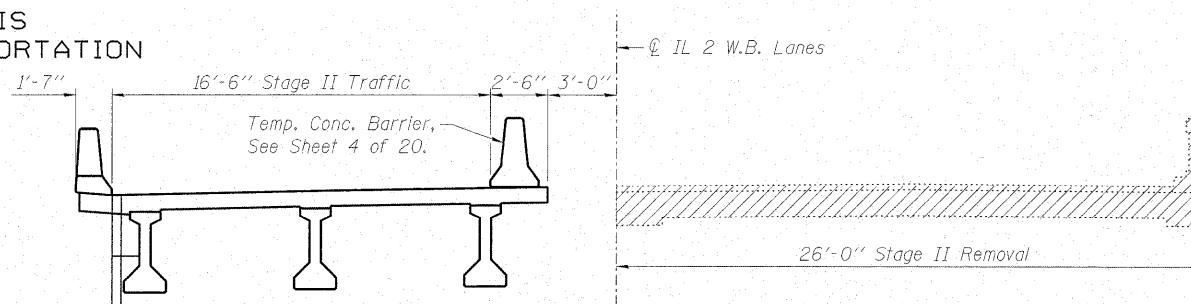


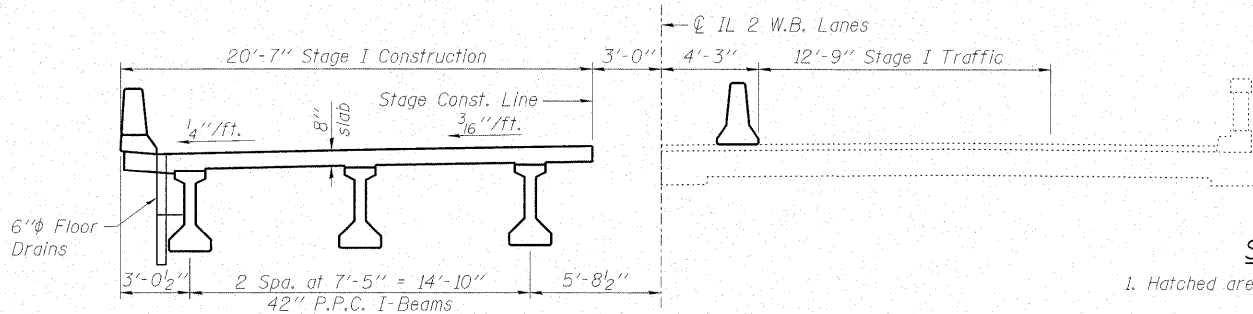
STATE OF ILLINOIS  
DEPARTMENT OF TRANSPORTATION



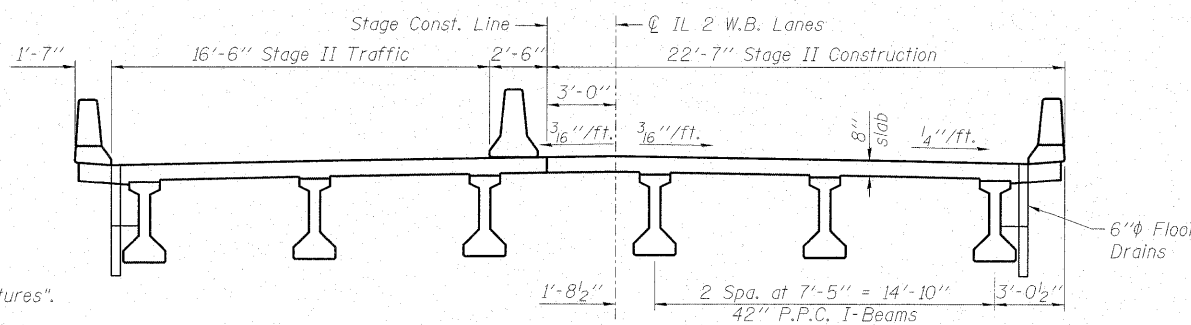
**STAGE I REMOVAL**  
(Looking East)



**STAGE II REMOVAL**  
(Looking East)



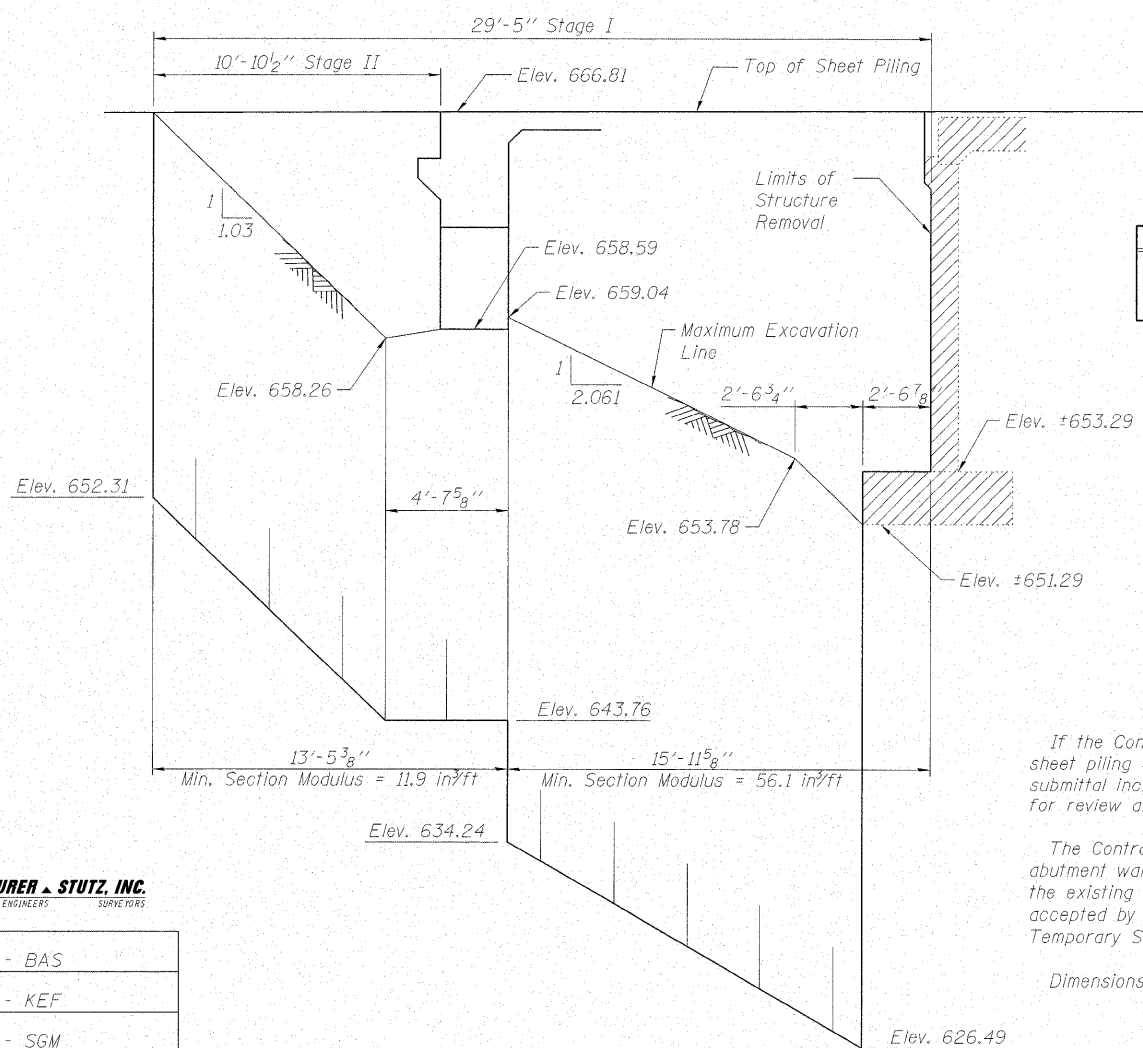
**STAGE I CONSTRUCTION**  
(Looking East)



**STAGE II CONSTRUCTION**  
(Looking East)

**STAGING NOTES:**

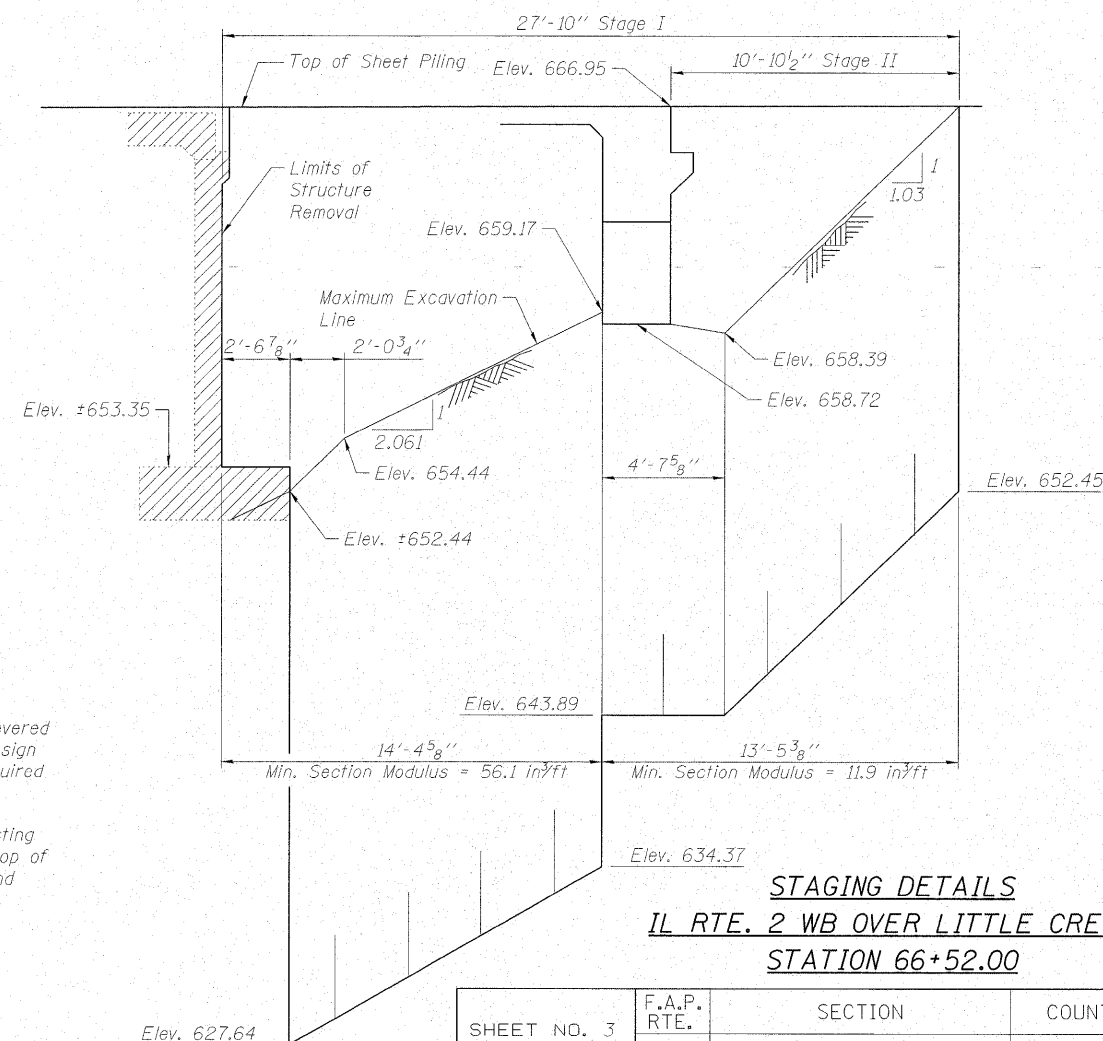
1. Hatched areas indicate "Removal of Existing Structures".
2. For quantities of "Temporary Concrete Barrier", see Roadway Plans.



**TEMPORARY SHEET PILING**  
(West Abutment)

**BILL OF MATERIAL**

Item	Unit	Quantity
Temporary Sheet Piling	Sq. Ft.	1528



**TEMPORARY SHEET PILING**  
(East Abutment)

**STAGING DETAILS**  
**IL RTE. 2 WB OVER LITTLE CREEK**  
**STATION 66+52.00**



DESIGNED - BAS
CHECKED - KEF
DRAWN - SGM
CHECKED - RJA/KEF

If the Contractor chooses to alter the temporary cantilevered sheet piling design requirements shown on the plans, a design submittal including plan details and calculations will be required for review and acceptance by the Engineer.

The Contractor shall connect the first sheet to the existing abutment wall to ensure stability of sheets driven to the top of the existing footing. This connection shall be reviewed and accepted by the Engineer and included in the cost for Temporary Sheet Piling.

Dimensions shown parallel to  $\varnothing$  roadway.

SHEET NO. 3 20 SHEETS	F.A.P. RTE. 561	SECTION 31-1BR-1	COUNTY LEE	TOTAL SHEETS 92	SHEET NO. 36
	STRUCTURE NO. 052-0078		CONTRACT NO. 64B05		
FED. ROAD DIST. NO. _ ILLINOIS FED. AID PROJECT					