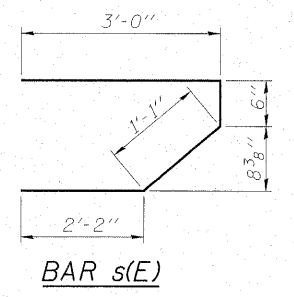
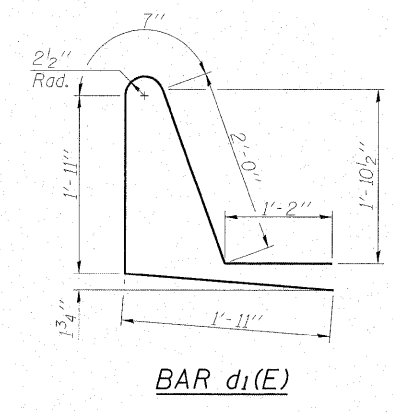
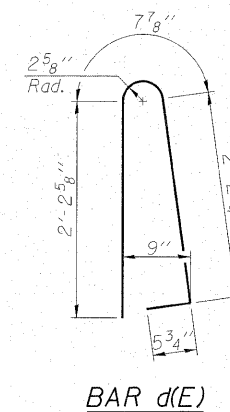
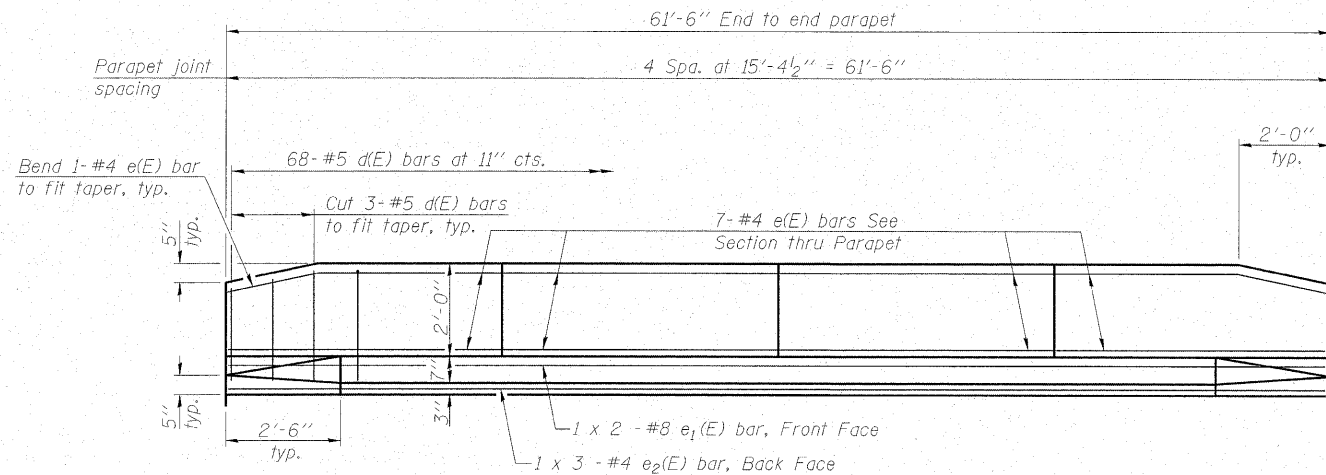
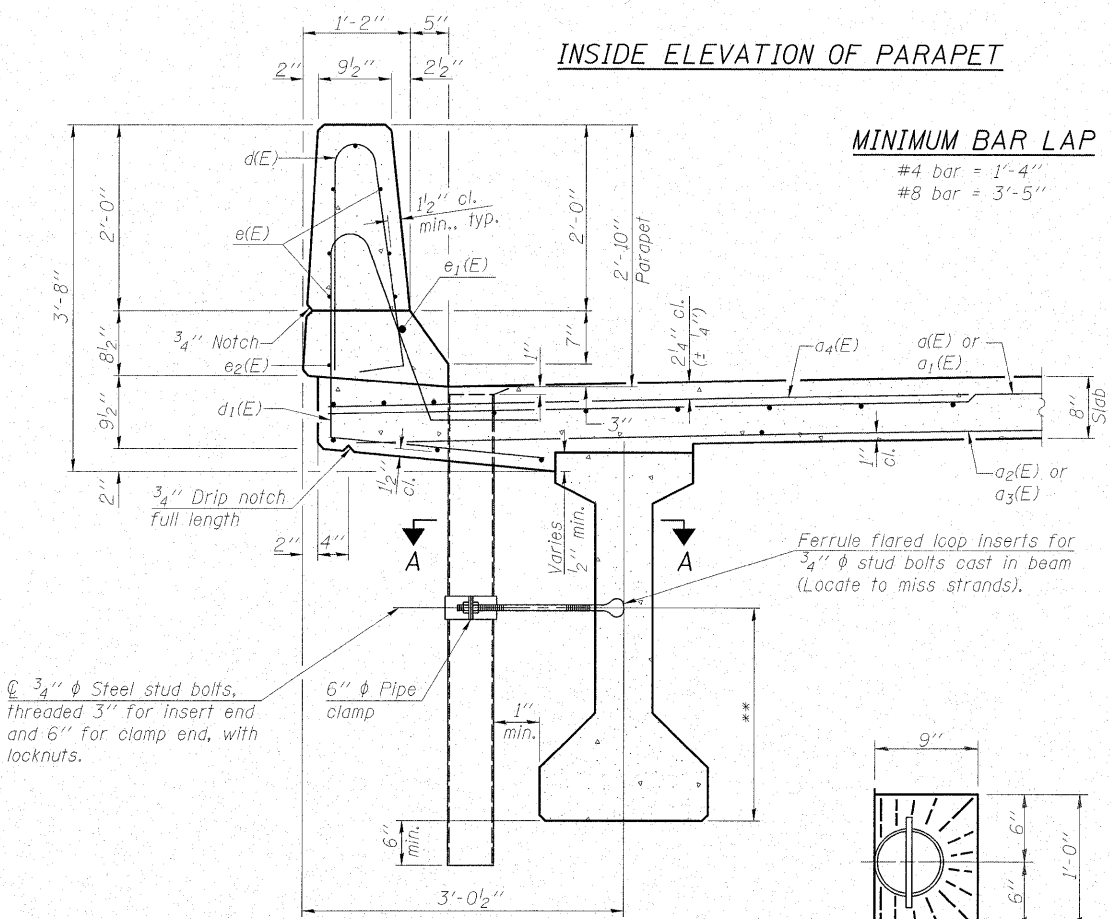


STATE OF ILLINOIS  
DEPARTMENT OF TRANSPORTATION

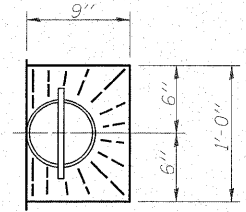


INSIDE ELEVATION OF PARAPET

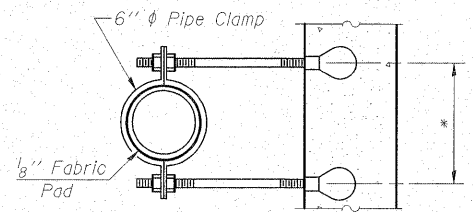


**MINIMUM BAR LAP**  
#4 bar = 1'-4"  
#8 bar = 3'-5"

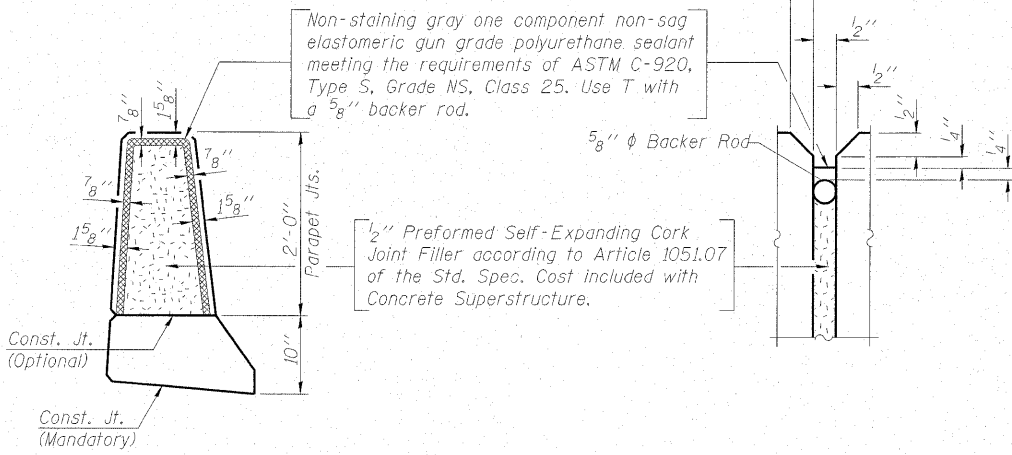
SECTION THRU PARAPET  
\*\*For insert locations See sheet 13 of 20.



TOP PLAN

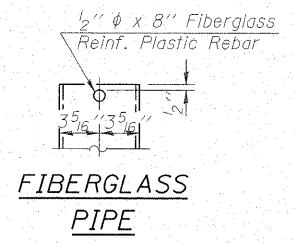


SECTION A-A  
\*Dimension as required by Pipe Clamp

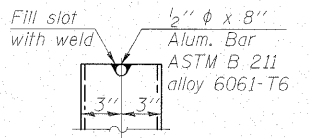


PARAPET JOINT DETAILS

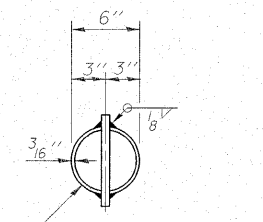
Notes:  
Fiberglass pipe shall conform to ASTM D2996, with short-time rupture strength hoop tensile stress of 30,000 p.s.i. minimum.  
The exterior surfaces of the floor drains shall be coated or pigmented by the manufacturer with a color that matches the concrete.  
The clamping device and inserts shall be galvanized according to AASHTO M 232.



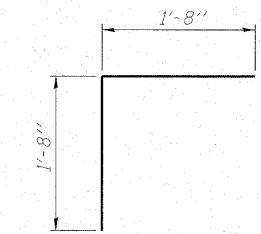
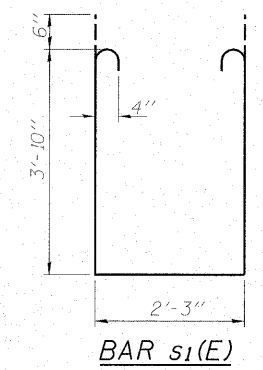
FIBERGLASS PIPE



ALUMINUM TUBE



TOP PLAN  
(Showing Aluminum Tube)



BAR v(E)

SUPERSTRUCTURE  
BILL OF MATERIAL

Bar	No.	Size	Length	Shape
a(E)	114	#5	20'-1"	—
a <sub>1</sub> (E)	114	#5	22'-1"	—
a <sub>2</sub> (E)	78	#5	19'-6"	—
a <sub>3</sub> (E)	78	#5	21'-6"	—
a <sub>4</sub> (E)	228	#6	6'-0"	—
a <sub>5</sub> (E)	4	#5	20'-9"	—
a <sub>6</sub> (E)	4	#5	22'-9"	—
b(E)	138	#5	21'-7"	—
b <sub>1</sub> (E)	144	#5	16'-7"	—
d(E)	136	#5	5'-7"	⌋
d <sub>1</sub> (E)	136	#5	7'-7"	⌋
e(E)	56	#4	15'-1"	—
e <sub>1</sub> (E)	4	#8	32'-4"	—
e <sub>2</sub> (E)	6	#4	2'-4"	—
m(E)	4	#6	19'-11"	—
m <sub>1</sub> (E)	4	#6	22'-0"	—
m <sub>2</sub> (E)	6	#6	20'-10"	—
m <sub>3</sub> (E)	6	#6	22'-11"	—
m <sub>4</sub> (E)	24	#6	9'-6"	—
m <sub>5</sub> (E)	8	#6	5'-5"	—
m <sub>6</sub> (E)	4	#6	1'-10"	—
m <sub>7</sub> (E)	2	#6	1'-6"	—
m <sub>8</sub> (E)	2	#6	3'-7"	—
s(E)	92	#5	6'-9"	⌋
s <sub>1</sub> (E)	72	#4	10'-11"	⌋
v(E)	84	#5	3'-4"	⌋
Reinforcement Bars, Epoxy Coated		Lbs.	21590	
Concrete Superstructure		Cu. Yds.	114.8	

Bars indicated thus 1 x 3 -#5 etc. indicates 1 line of bars with 3 lengths per line.

SUPERSTRUCTURE DETAILS  
IL RTE. 2 WB OVER LITTLE CREEK  
STATION 66+52.00

DESIGNED - BAS
CHECKED - KEF
DRAWN - SGM
CHECKED - RJA/KEF

SHEET NO. 10 20 SHEETS	F.A.P. RTE.	SECTION	COUNTY	TOTAL SHEETS	SHEET NO.
	561	31-1BR-1	LEE	92	43
	STRUCTURE NO. 052-0078		CONTRACT NO. 64B05		
FED. ROAD DIST. NO. _ ILLINOIS FED. AID PROJECT					