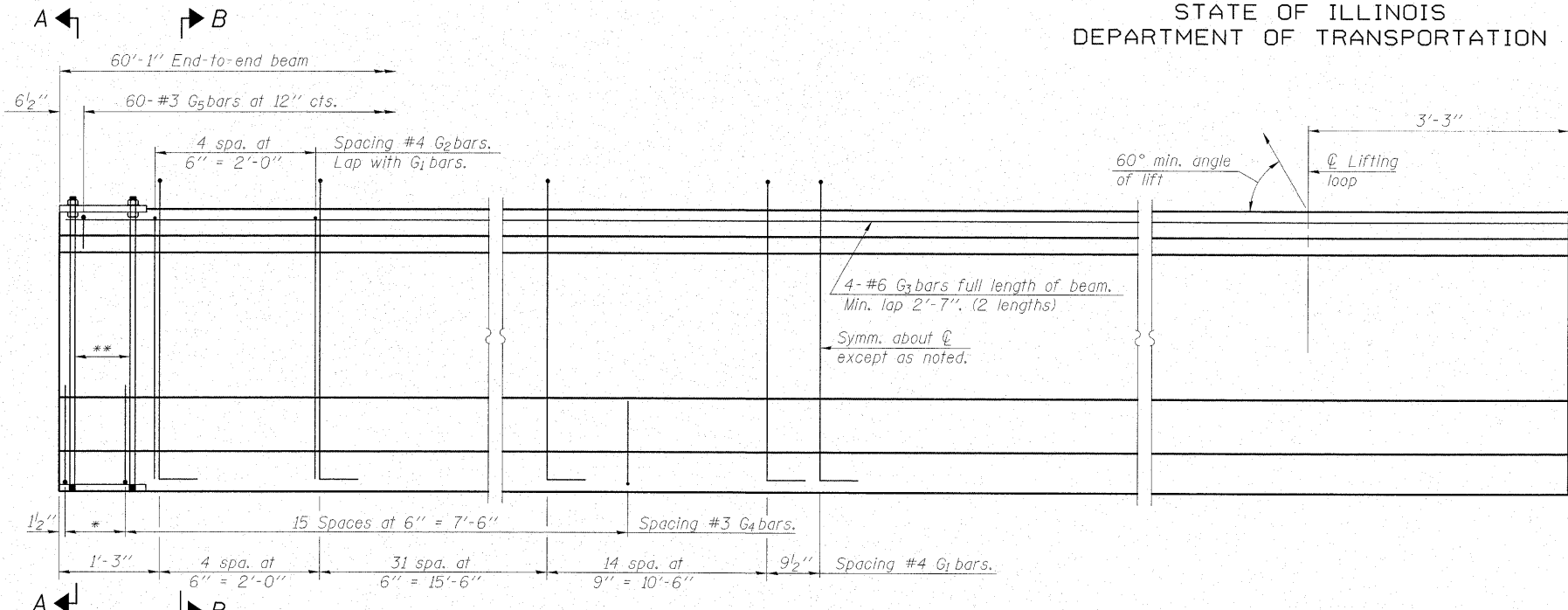


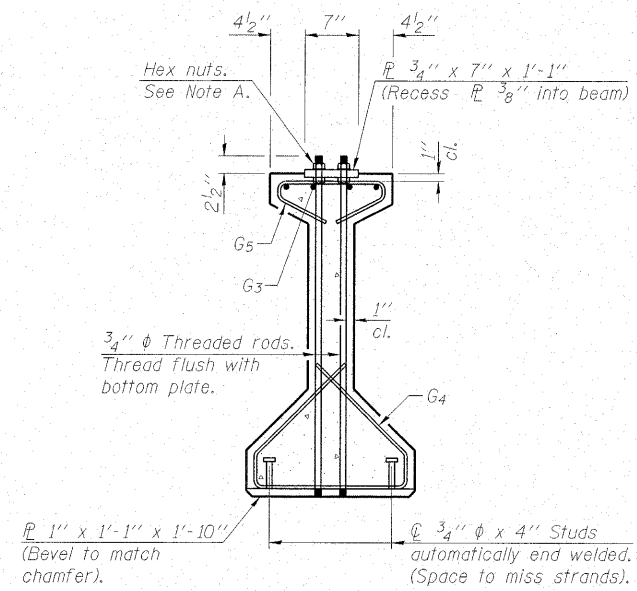
STATE OF ILLINOIS  
DEPARTMENT OF TRANSPORTATION



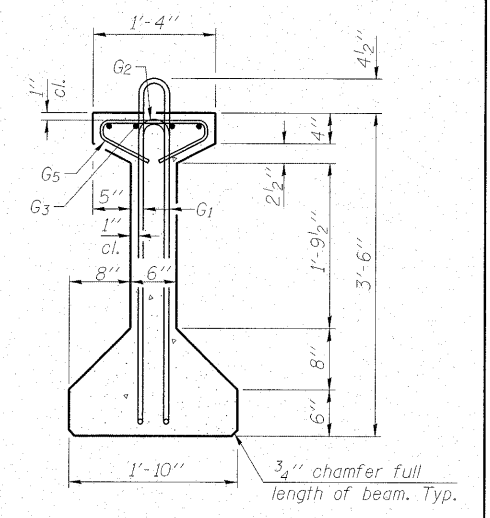
**ELEVATION OF BEAM**  
(Showing reinforcement & dimensions)

\*3 spaces at 3" = 9".  
\*\*4-3/4"  $\phi$  threaded dowel rods at 3" cts., Each Face.

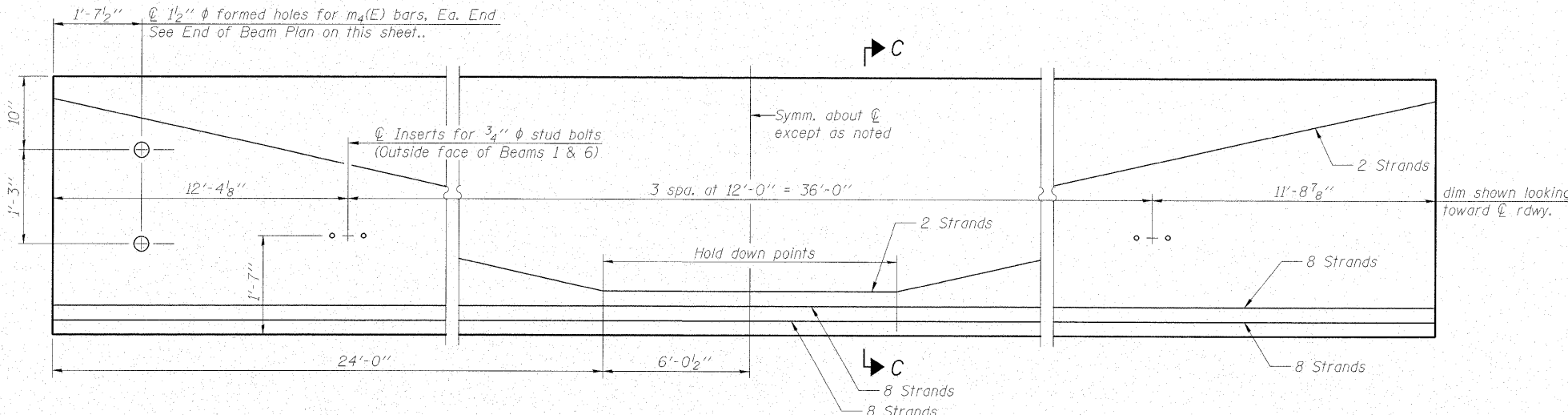
Note A:  
Hex nuts (top and bottom) with lock washers (top). Only tighten sufficiently to compress lock washers.



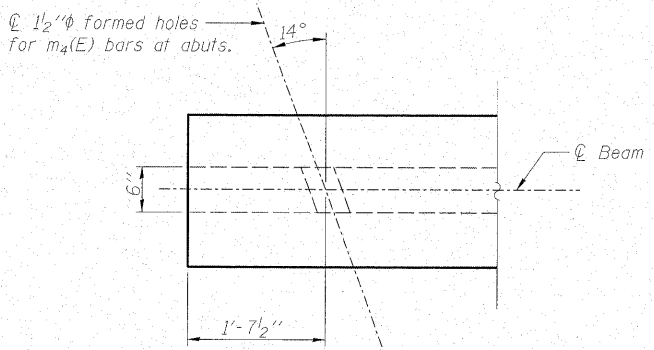
**SECTION A-A**



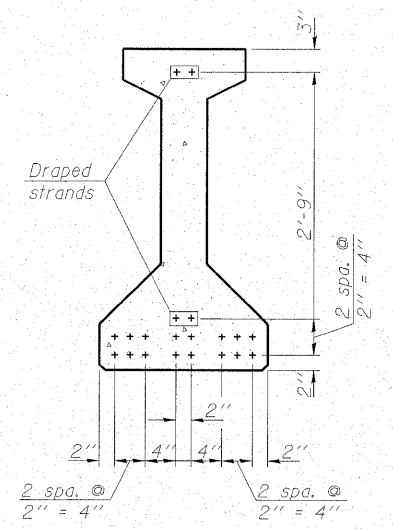
**SECTION B-B**



**ELEVATION OF BEAM**  
(Showing prestressing steel)



**END OF BEAM PLAN**



**SECTION C-C**

**\*\*\*BAR LIST  
ONE BEAM ONLY**

Bar	No.	Size	Length	Shape
G <sub>1</sub>	101	#4	8'-5"	∩ L
G <sub>2</sub>	10	#4	6'-8"	∩
G <sub>3</sub>	8	#6	31'-3"	—
G <sub>4</sub>	38	#3	4'-11"	U
G <sub>5</sub>	60	#3	2'-6"	U

\*\*\*For information only

Notes:  
See sheet 14 of 20 for additional details and Bill of Material.  
Required release strength, f'cl, shall be 5000 psi.

**42" PPC I-BEAM  
IL RTE. 2 WB OVER LITTLE CREEK  
STATION 66+52.00**

**MAURER & STUTZ, INC.**  
ENGINEERS SURVEYORS

DESIGNED - BAS
CHECKED - KEF
DRAWN - SGM
CHECKED - RJA/KEF

SHEET NO. 13 20 SHEETS	F.A.P. RTE. 561	SECTION 31-1BR-1	COUNTY LEE	TOTAL SHEETS 92	SHEET NO. 46
	STRUCTURE NO. 052-0078		CONTRACT NO. 64B05		
FED. ROAD DIST. NO. ILLINOIS FED. AID PROJECT					