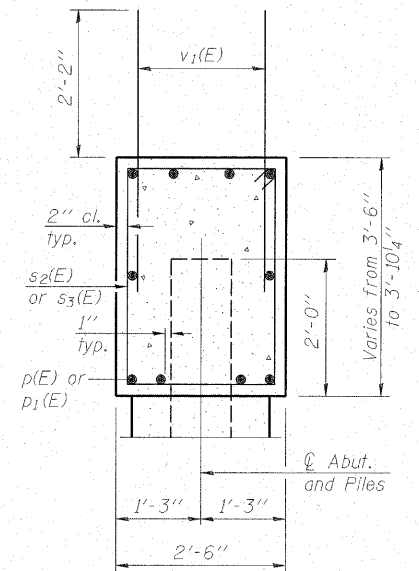
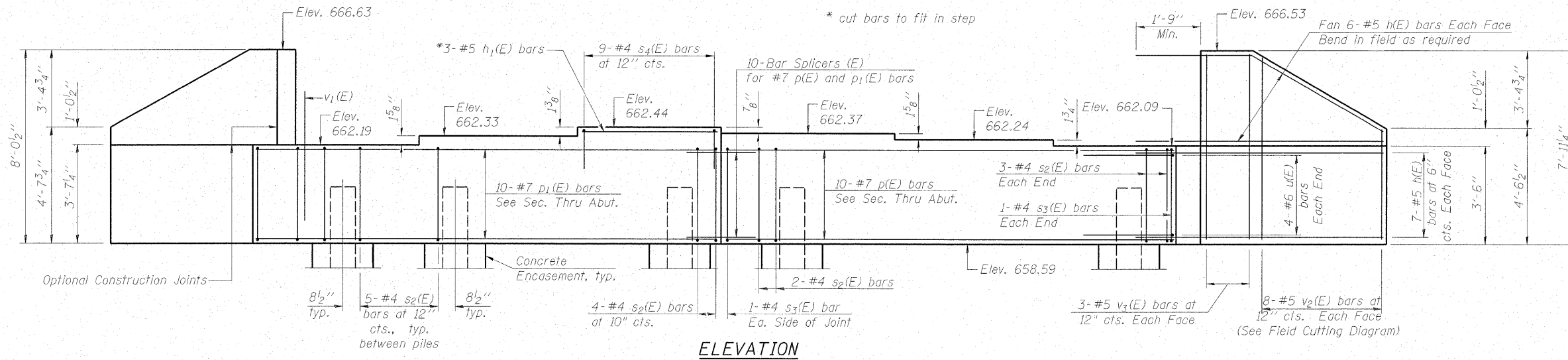


STATE OF ILLINOIS  
DEPARTMENT OF TRANSPORTATION

Notes: Four steps monolithically with cap.



SEC. THRU ABUT.

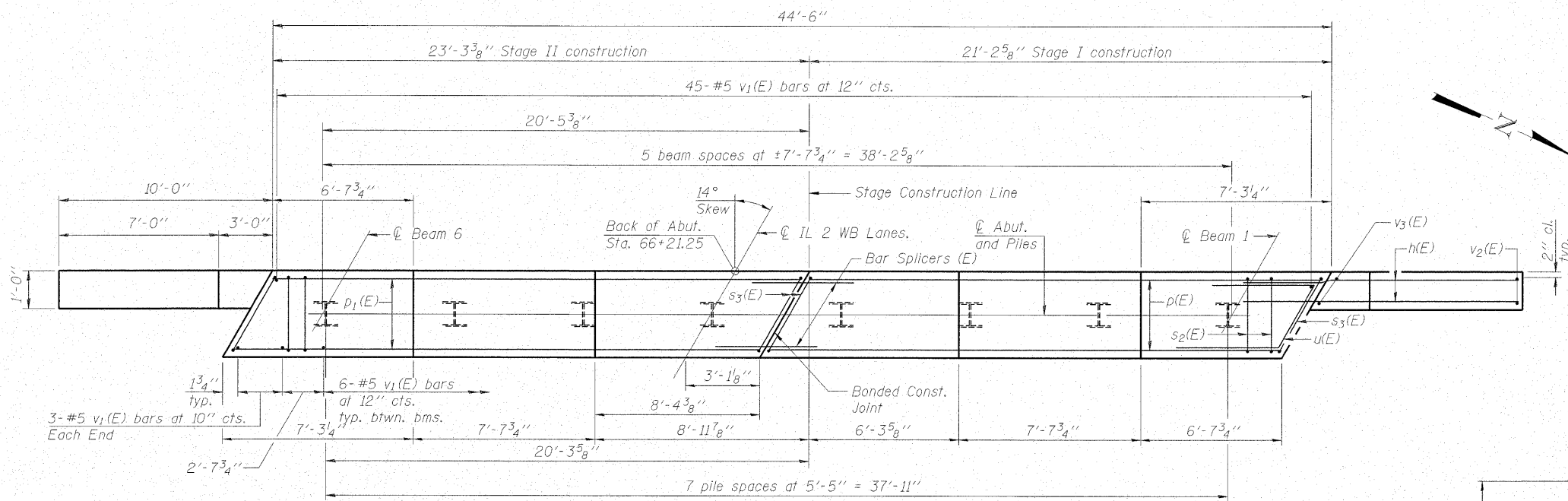
BILL OF MATERIAL

Bar No.	Size	Length	Shape
h(E)	#5	12'-5"	—
h1(E)	#5	8'-8"	—
p(E)	#7	20'-11"	—
p1(E)	#7	22'-11"	—
s2(E)	#4	11'-5"	□
s3(E)	#4	11'-7"	□
s4(E)	#4	6'-2"	□
u(E)	#6	7'-10"	└
v1(E)	#5	4'-4"	—
v2(E)	#5	11'-10"	—
v3(E)	#5	7'-8"	—
Structure Excavation	Cu. Yd.	155	
Concrete Structures	Cu. Yd.	20.2	
Concrete Encasement	Cu. Yd.	2.8	
Reinforcement Bars, Epoxy Coated	Pound	2740	
Furnishing Steel Piles, HP12x53	Foot	441	
Driving Piles	Foot	441	
Test Pile, Steel HP12x53	Each	1	
Pile Shoes	Each	8	

For details of Bar Splicers, see sheet 18 of 20.  
For details of piles and Concrete Encasement, see sheet 17 of 20.

WEST ABUTMENT  
IL RTE. 2 WB OVER LITTLE CREEK  
STATION 66+52.00

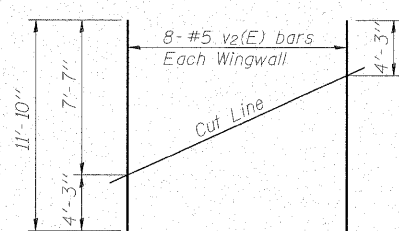
SHEET NO.	F.A.P. RTE.	SECTION	COUNTY	TOTAL SHEETS	SHEET NO.
15	561	31-1BR-1	LEE	92	48
20 SHEETS		STRUCTURE NO. 052-0078	CONTRACT NO. 64B05		
FED. ROAD DIST. NO. _ ILLINOIS FED. AID PROJECT					



PLAN

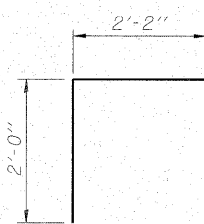
PILE DATA

Type: Steel HP12x53 w/ pile shoes  
Nominal Required Bearing: 330 kips  
Factored Resistance Available: 165 kips  
Est. Length: 63 feet  
No. Production Piles: 7  
No. Test Piles: 1

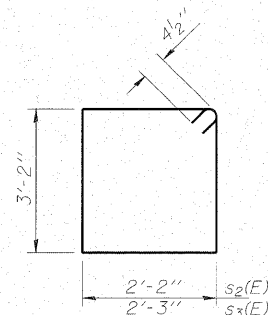


FIELD CUTTING DIAGRAM

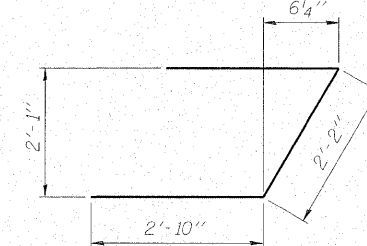
Order v2(E) full length. Cut as shown and use remainder of bars in opposite face.



BAR s4(E)



BARS s2(E) & s3(E)



BAR u(E)



DESIGNED - BAS
CHECKED - KEF
DRAWN - SGM
CHECKED - RJA/KEF