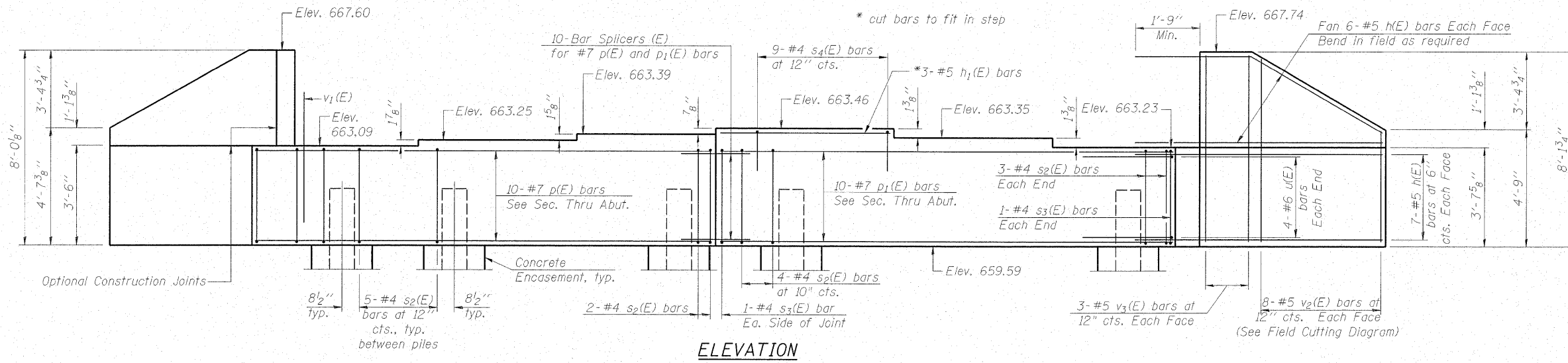
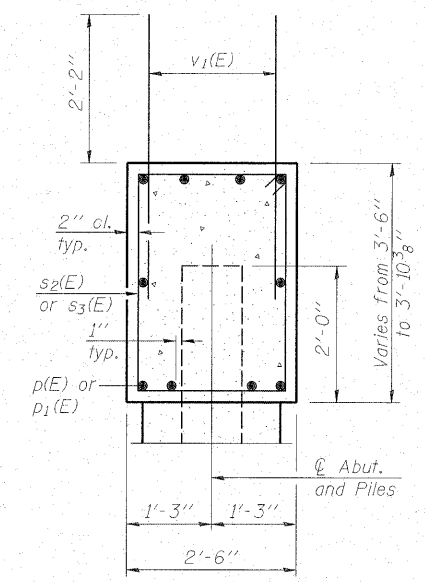


STATE OF ILLINOIS
DEPARTMENT OF TRANSPORTATION

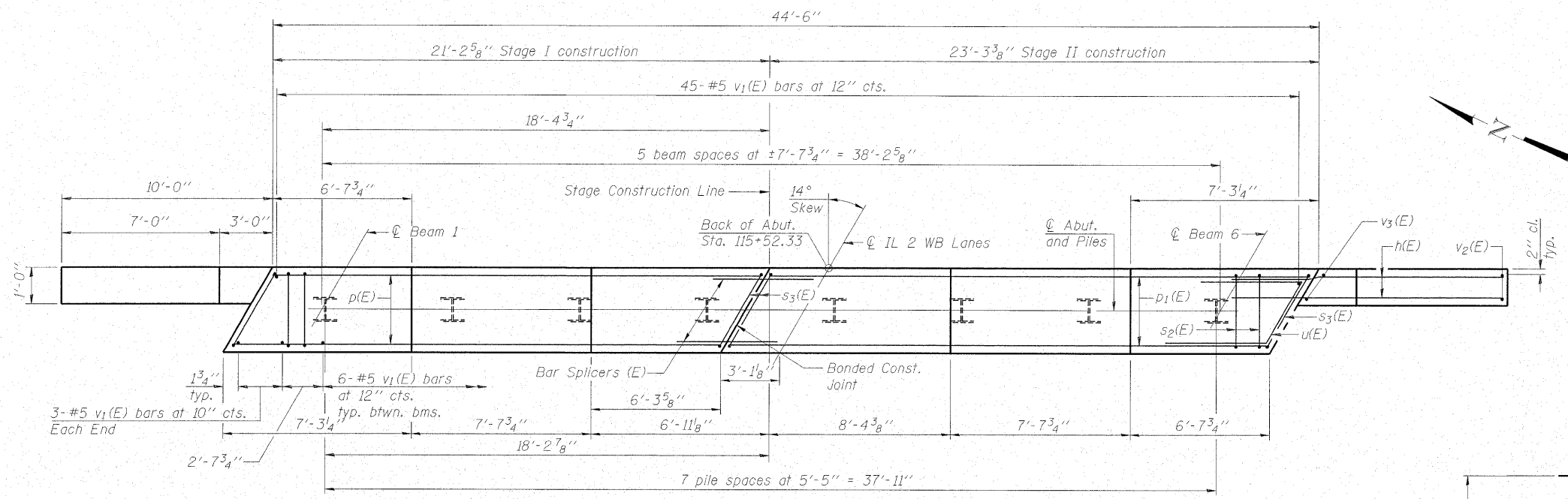
Notes: Four steps monolithically with cap.



ELEVATION

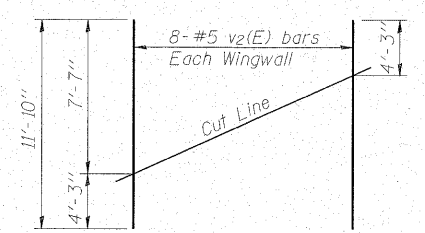


SEC. THRU ABUT.



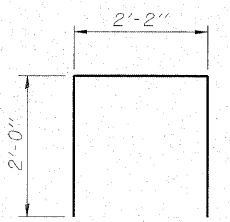
PLAN

PILE DATA
Type: Steel HP12x53 w/ pile shoes
Nominal Required Bearing: 352 kips
Factored Resistance Available: 176 kips
Est. Length: 62 feet
No. Production Piles: 7
No. Test Piles: 1

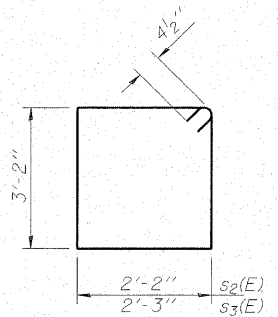


FIELD CUTTING DIAGRAM

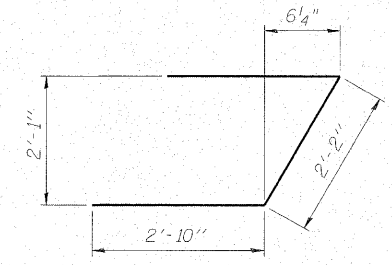
Order v2(E) full length. Cut as shown and use remainder of bars in opposite face.



BAR s4(E)



BARS s2(E) & s3(E)



BAR u(E)

BILL OF MATERIAL

Bar	No.	Size	Length	Shape
h(E)	52	#5	12'-5"	—
h1(E)	3	#5	8'-8"	—
p(E)	10	#7	20'-11"	—
p1(E)	10	#7	22'-11"	—
s2(E)	42	#4	11'-5"	□
s3(E)	4	#4	11'-7"	□
s4(E)	9	#4	6'-2"	□
u(E)	8	#6	7'-10"	└
v1(E)	81	#5	4'-4"	—
v2(E)	16	#5	11'-10"	—
v3(E)	12	#5	7'-8"	—
Structure Excavation		Cu. Yd.	157	
Concrete Structures		Cu. Yd.	20.3	
Concrete Encasement		Cu. Yd.	2.8	
Reinforcement Bars, Epoxy Coated		Pound	2740	
Furnishing Steel Piles, HP12x53		Foot	434	
Driving Piles		Foot	434	
Test Pile, Steel HP12x53		Each	1	
Pile Shoes		Each	8	

For details of Bar Splicers, see sheet 18 of 20.
For details of piles and Concrete Encasement, see sheet 17 of 20.

EAST ABUTMENT
IL RTE. 2 WB OVER UNNAMED TRIBUTARY TO THE ROCK RIVER
STATION 115+16.00

MAURER & STUTZ, INC.
ENGINEERS SURVEYORS

DESIGNED - JAE
CHECKED - KEF
DRAWN - SGM
CHECKED - RJA/KEF

SHEET NO.	F.A.P. RTE.	SECTION	COUNTY	TOTAL SHEETS	SHEET NO.
16	561	31-1BR-2	LEE	92	69
20 SHEETS		STRUCTURE NO. 052-0079		CONTRACT NO. 64B05	
		FED. ROAD DIST. NO. ILLINOIS FED. AID PROJECT			