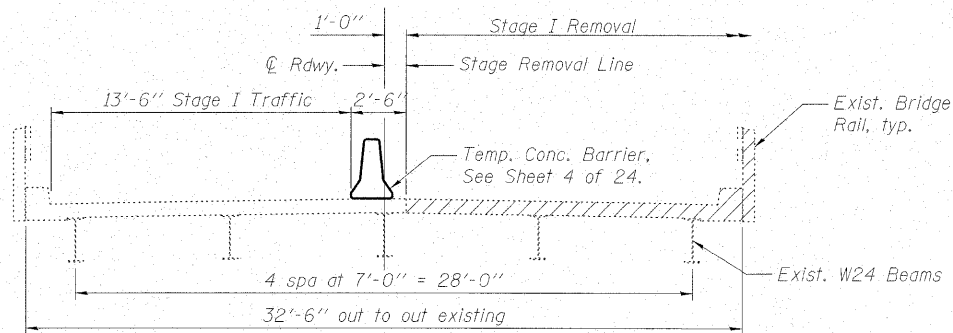
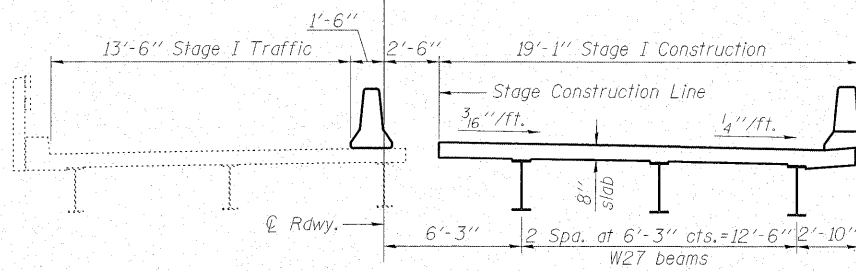


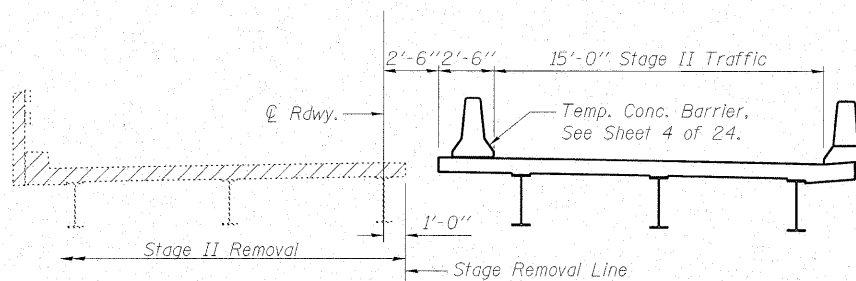
STATE OF ILLINOIS
DEPARTMENT OF TRANSPORTATION



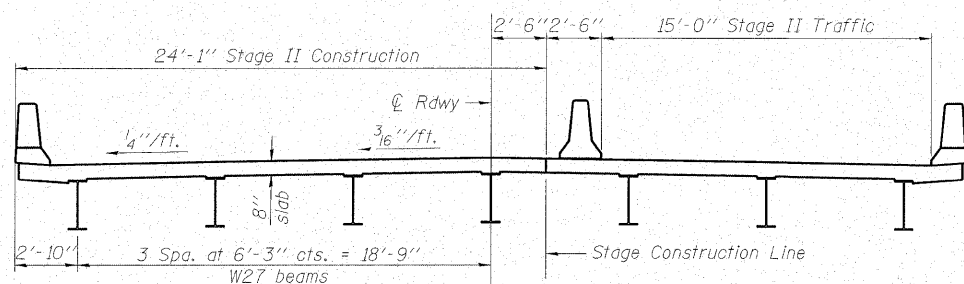
STAGE I REMOVAL
(Looking North)



STAGE I CONSTRUCTION
(Looking North)



STAGE II REMOVAL
(Looking North)



STAGE II CONSTRUCTION
(Looking North)

Note:
A cantilevered sheet piling design does not appear feasible at the South Abutment and additional members or other retention systems may be necessary. The Contractor shall submit a temporary soil retention system design including plan details and calculations for review and acceptance by the Engineer.

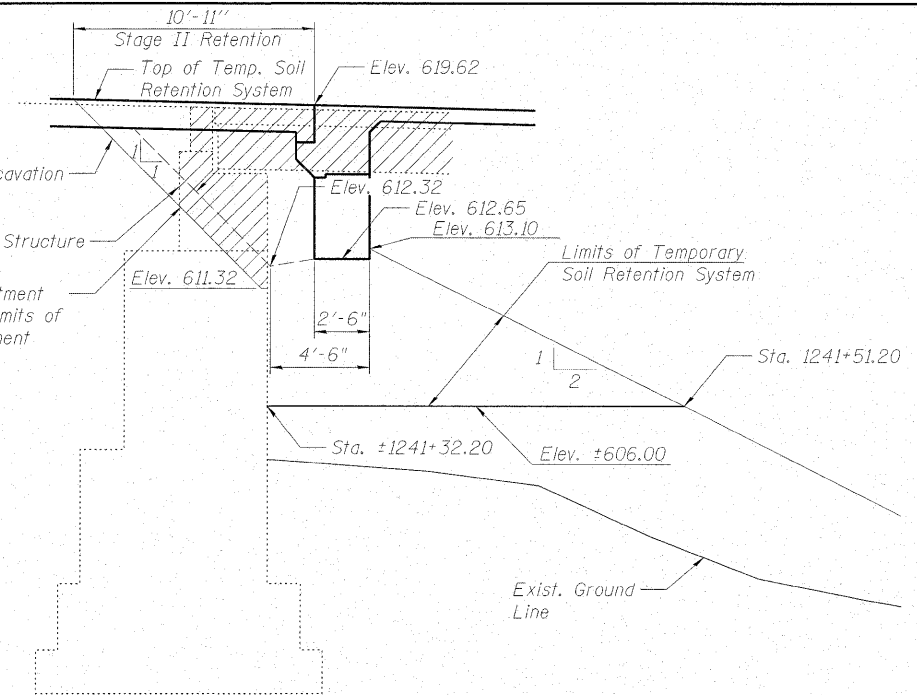
BILL OF MATERIAL

Item	Unit	Quantity
Temporary Sheet Piling	Sq. Ft	461
Temporary Soil Retention System	Sq. Ft	133

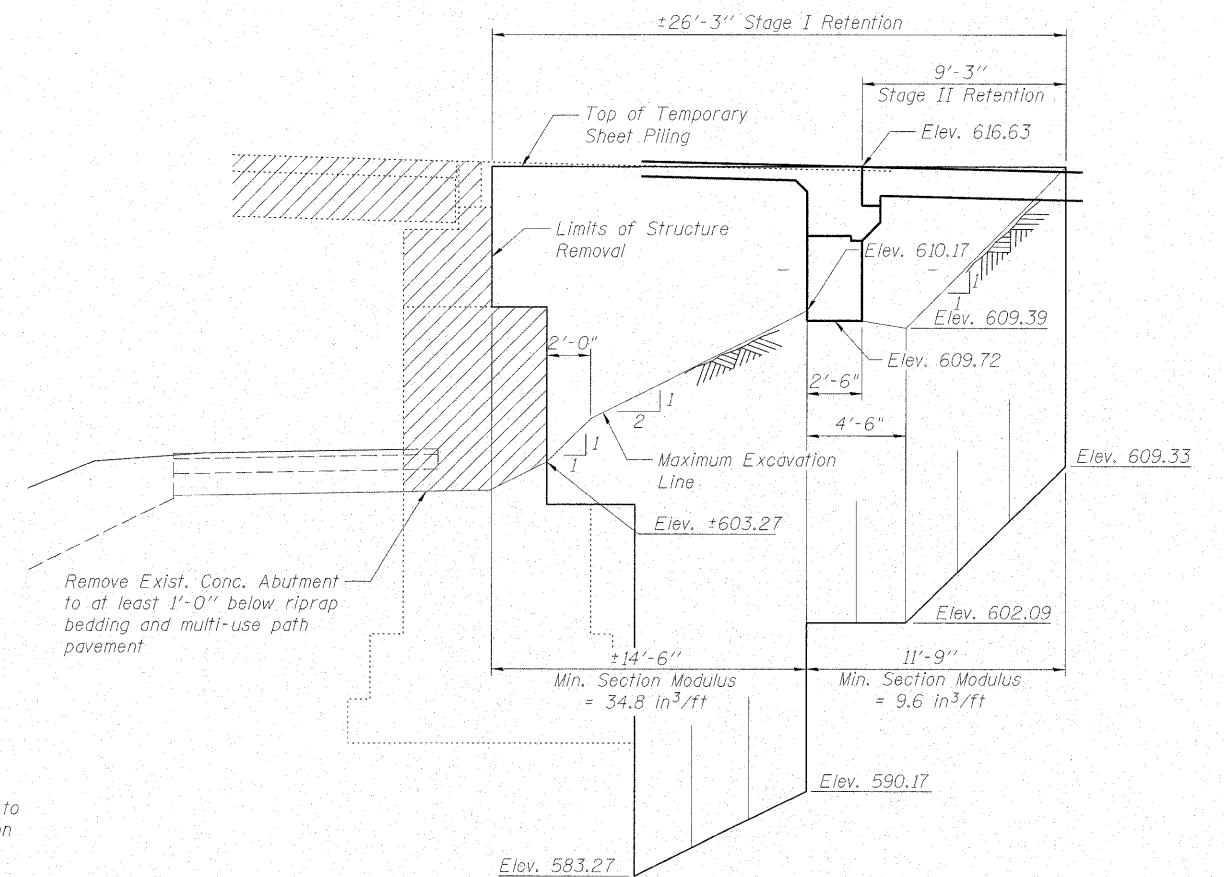
Note:
If the Contractor chooses to alter the temporary cantilevered sheet piling design requirements shown on the plans, a design submittal including plan details and calculations will be required for review and acceptance by the Engineer.

The Contractor shall connect the first sheet to the existing abutment wall to ensure stability of sheets driven to top of existing concrete. This connection shall be reviewed and accepted by the Engineer and included in the cost for Temporary Sheet Piling.

No information is available for the existing abutment. Contractor shall fill gaps due to steps in abutment concrete with lagging anchored to the sheet piling and back of abutment. Lagging detail shall be subject to approval by the Engineer and shall be paid for as Temporary Sheet Piling per square foot.



TEMPORARY SOIL RETENTION SYSTEM
(South Abutment)



TEMPORARY SHEET PILING
(North abutment)

STAGING DETAILS
STRUCTURE NO. 037-0175

SHEET NO.	F.A.P. RTE.	SECTION	COUNTY	TOTAL SHEETS	SHEET NO.
3	638	129 BR-3	HENRY	73	20
CONTRACT NO. 64B08					
FED. ROAD DIST. NO. ILLINOIS FED. AID PROJECT					



DESIGNED - BAS
CHECKED - KEF
DRAWN - SGM
CHECKED - RJA/KEF