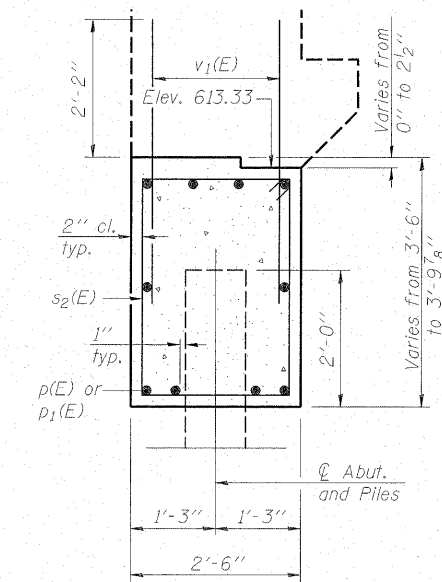
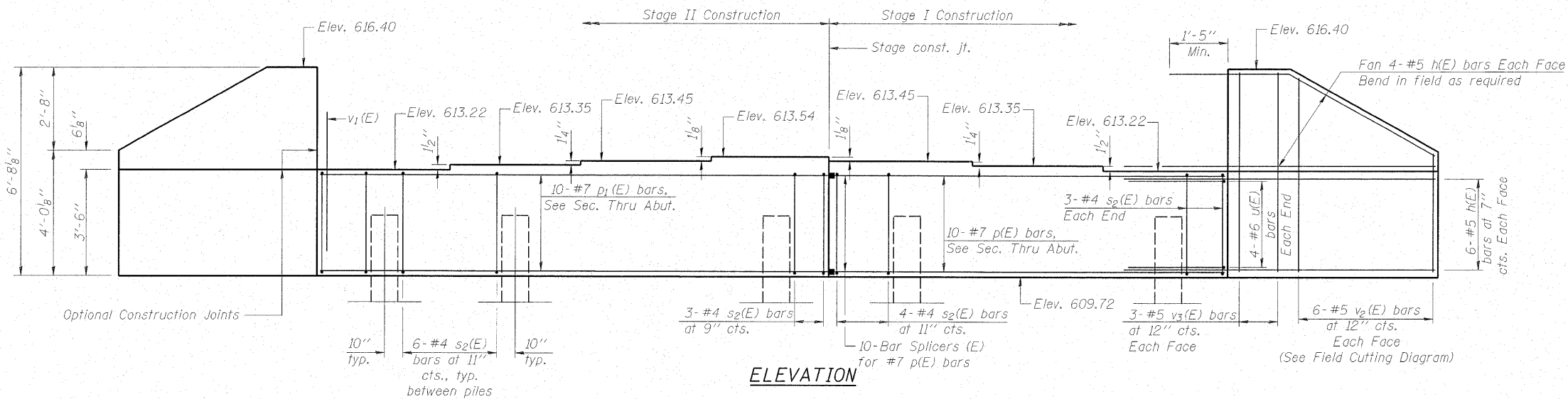


STATE OF ILLINOIS  
DEPARTMENT OF TRANSPORTATION

Notes: Four steps monolithically with cap.  
Space reinforcement to miss anchor bolts.



SEC. THRU ABUT.

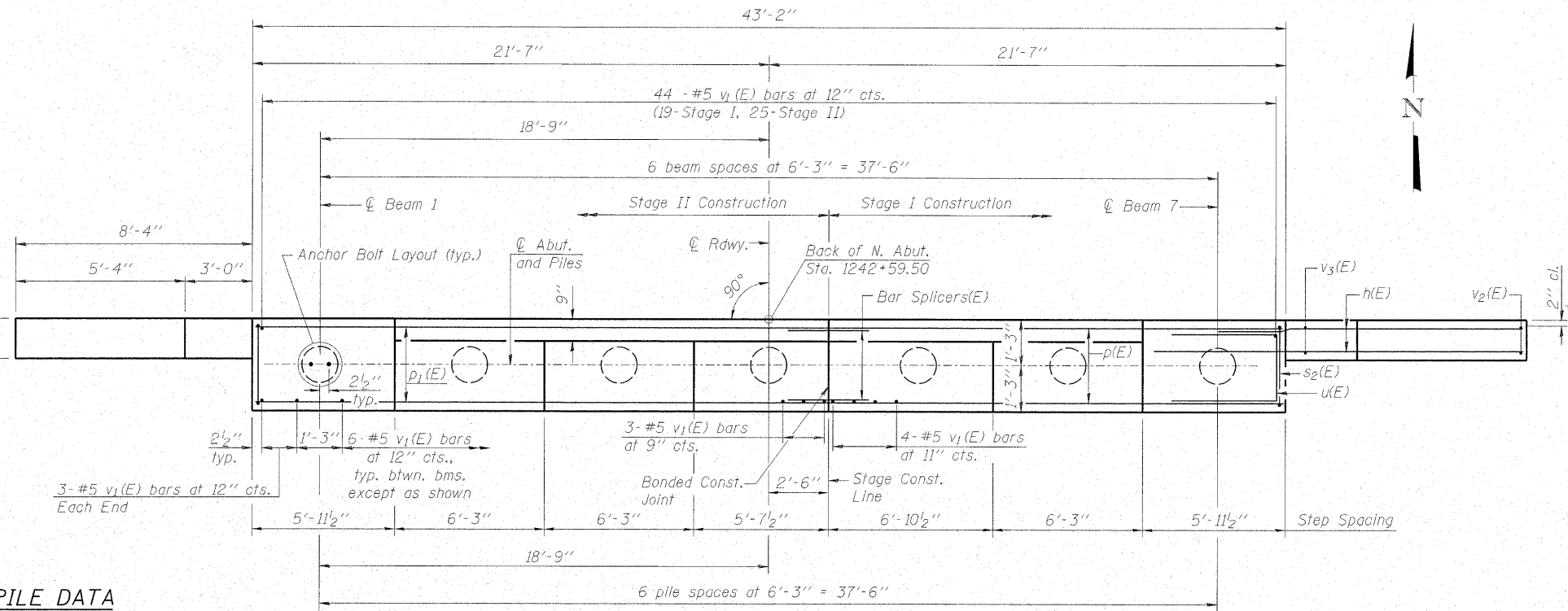
**BILL OF MATERIAL**

Bar	No.	Size	Length	Shape
h(E)	40	#5	10'-3"	—
p(E)	10	#7	18'-9"	—
p <sub>1</sub> (E)	10	#7	23'-9"	—
s <sub>2</sub> (E)	43	#4	11'-5"	□
u(E)	8	#6	7'-9"	—
v <sub>1</sub> (E)	87	#5	4'-4"	—
v <sub>2</sub> (E)	12	#5	10'-1"	—
v <sub>3</sub> (E)	12	#5	6'-4"	—
Structure Excavation	Cu. Yd.		106	
Concrete Structures	Cu. Yd.		17.5	
Reinforcement Bars, Epoxy Coated	Pound		2320	
Furnishing Metal Shell Piles, 14"x0.312"	Foot		306	
Driving Piles	Foot		306	
Test Pile, Metal Shells	Each		1	
Pile Shoes	Each		7	
Anchor Bolts, 1"	Each		14	

For details of Bar Splicers, see sheet 21 of 24.  
For details of piles, see sheet 20 of 24.

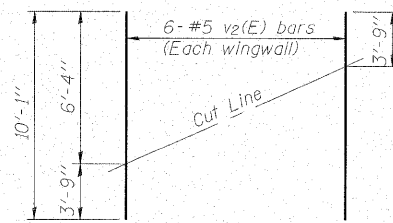
**NORTH ABUTMENT  
STRUCTURE NO. 037-0175**

SHEET NO. 17 24 SHEETS	F.A.P. RTE.	SECTION	COUNTY	TOTAL SHEETS	SHEET NO.
	638	129 BR-3	HENRY	73	34
CONTRACT NO. 64B08					
FED. ROAD DIST. NO. ILLINOIS FED. AID PROJECT					



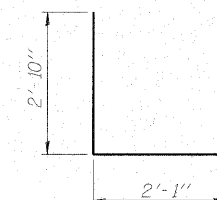
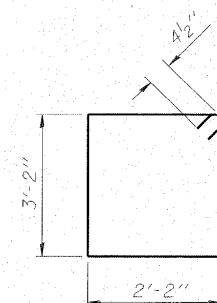
**PILE DATA**

Type: Metal Shell 14 in. dia. x 0.312 in. walls w/ pile shoes  
Nominal Required Bearing: 274 kips  
Factored Resistance Available: 137 kips  
Est. Length: 51 feet  
No. Production Piles: 6  
No. Test Piles: 1



**FIELD CUTTING DIAGRAM**

Order v<sub>2</sub>(E) full length. Cut as shown and use remainder of bars in opposite face.



DESIGNED - BAS
CHECKED - KEF
DRAWN - SGM
CHECKED - RJA/KEF