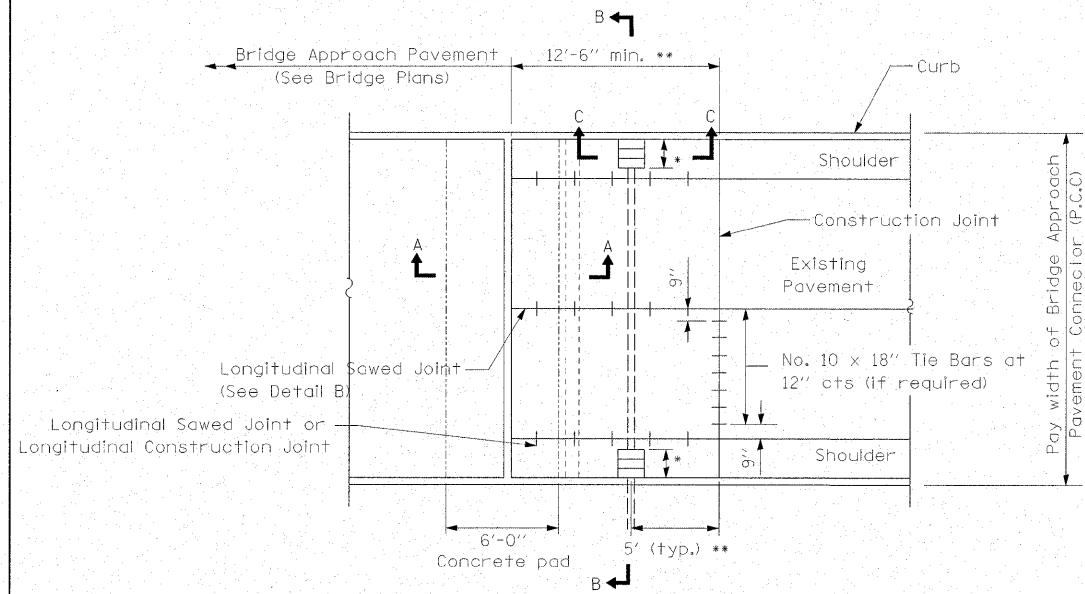


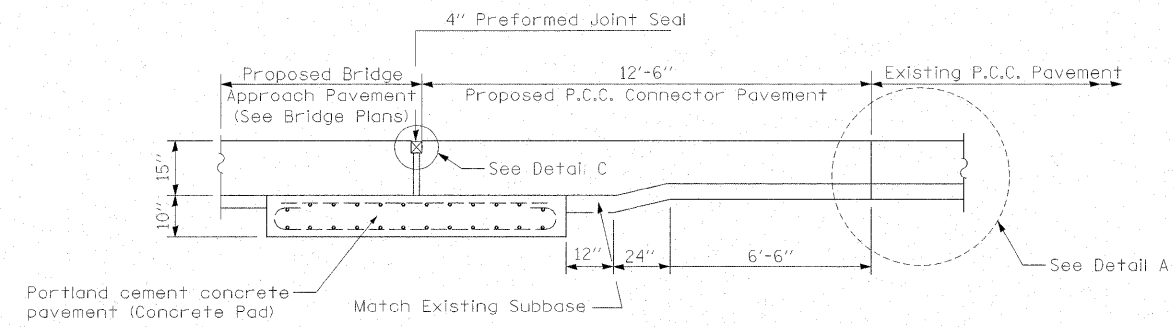
PLAN - WITH SKEW



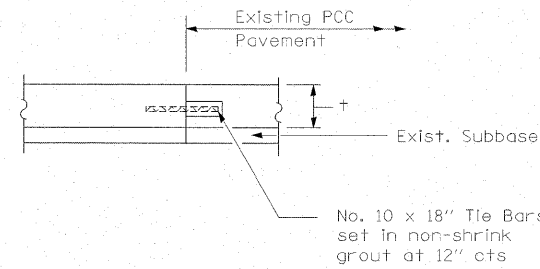
PLAN - WITHOUT SKEW

\* Type B, C, or D inlet box (Special) as required.

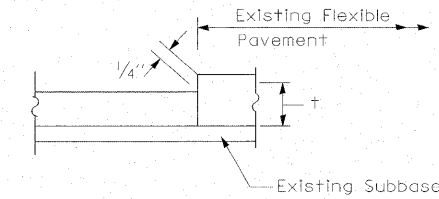
\*\* Increase this dimension as needed to position the inlet box and pipe drain between the proposed approach guardrail posts.



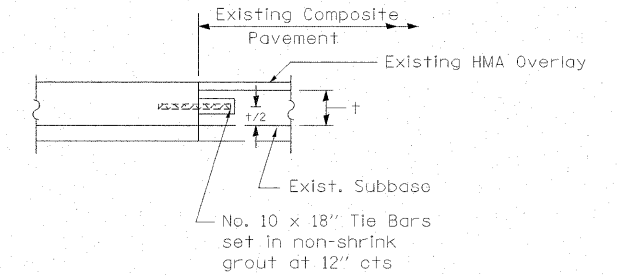
SECTION A-A



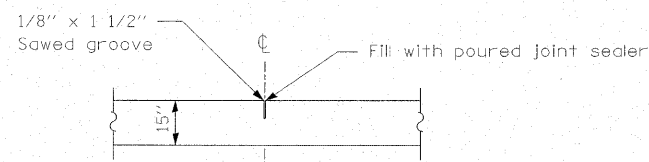
DETAIL A - RIGID PAVEMENT



DETAIL A - FLEXIBLE PAVEMENT

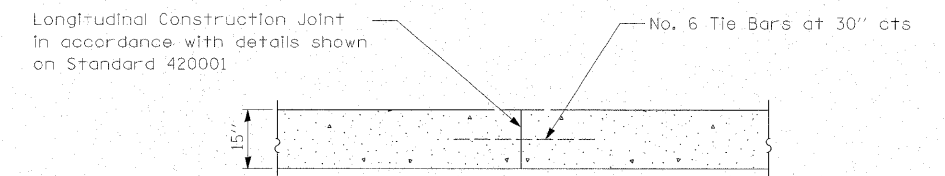


DETAIL A - COMPOSITE PAVEMENT



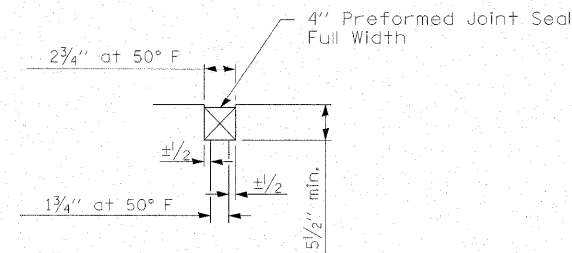
DETAIL B

(Reinforcement Not Shown)



OPTIONAL LONGITUDINAL CONSTRUCTION JOINT

As approved by the Engineer, the Contractor may elect to reduce the widths of pour by use of the Optional Longitudinal Construction Joint shown. Joints shall be located at the edge of a traffic lane.



DETAIL C

FILE NAME = #FILEL*	USER NAME = #USER*	DESIGNED - OBS*	REVISED -	<b>STATE OF ILLINOIS DEPARTMENT OF TRANSPORTATION</b>	<b>TYPE D INLET BOX, STANDARD 609001 (SPECIAL) DETAIL</b>			F.A.P. RTE. 638	SECTION 129BR-3	COUNTY HENRY	TOTAL SHEETS 73	SHEET NO. 54
PLOT SCALE = #SCALE*	CHECKED - RJA	REVISED -	SCALE:					SHEET NO. 1 OF 2 SHEETS	STA.	TO STA.	CONTRACT NO. 64B08	
PLOT DATE = #DATE*	DATE -	REVISED -				ILLINOIS FED. AID PROJECT						