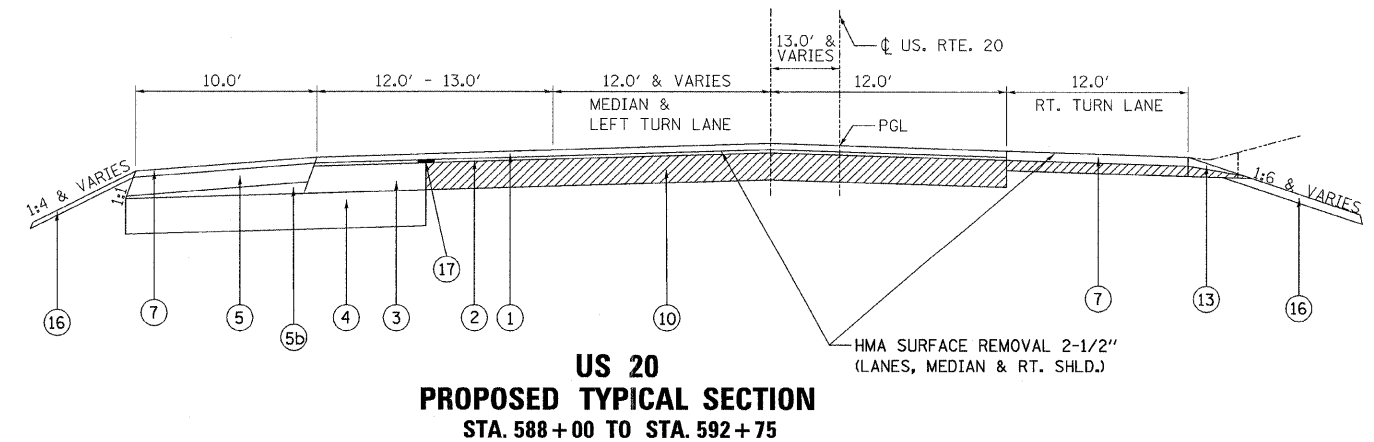
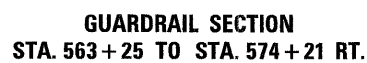
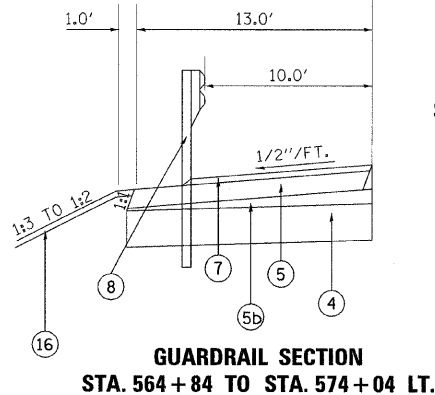
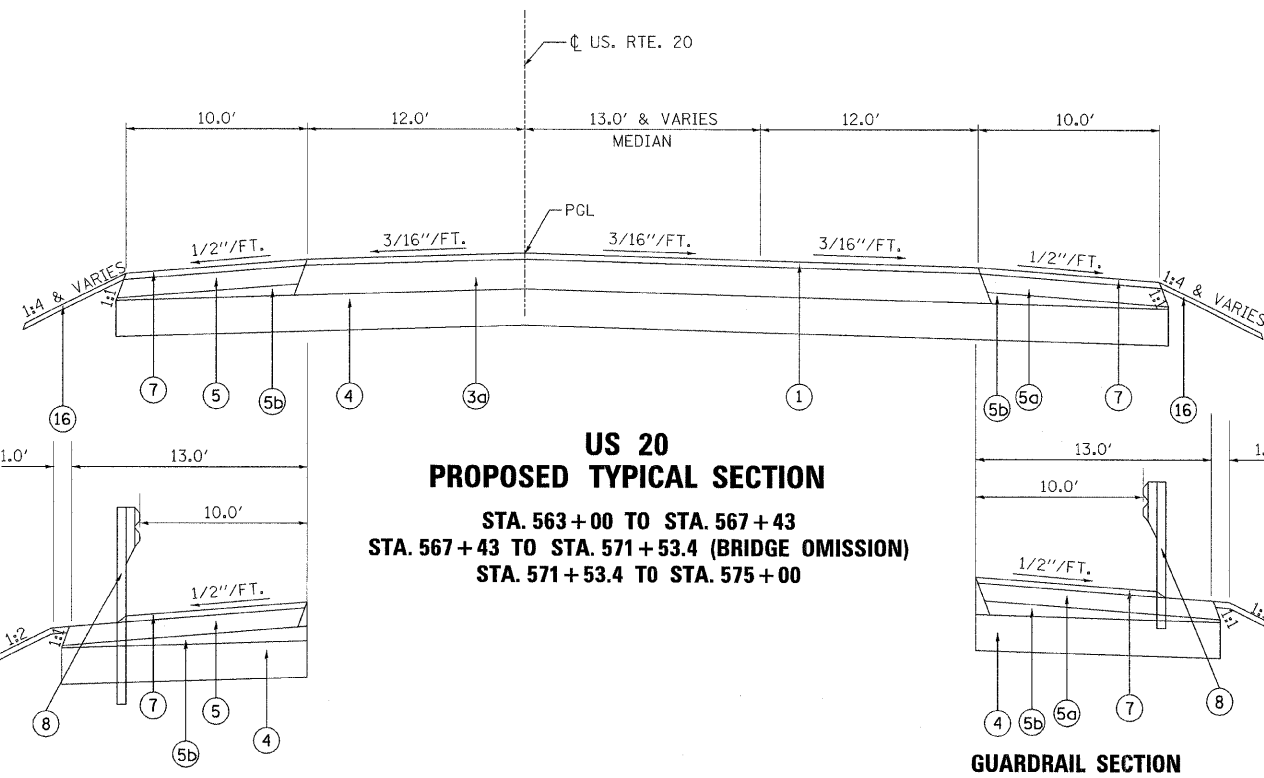


** USE SUB-BASE THICKNESS OF 18"
FROM STA. 554+00 - 556+00
W/ GEOTECHNICAL REINFORCEMENT BETWEEN
SUBBASE AND EXISTING SOIL



LEGEND

- ① HOT-MIX ASPHALT SURFACE COURSE, MIX "D", N70 (1 1/2")
- ② LEVELING BINDER (MACHINE METHOD), N70 (1")
- ③ HMA BINDER COURSE (10 1/4")
- ③a HMA BINDER COURSE (11 1/4")
- ④ SUB-BASE GRANULAR MATERIAL, TYPE A (12")
- ④a SUB-BASE GRANULAR MATERIAL, TYPE A (18") W/ GEOTECHNICAL REINFORCEMENT
- ⑤ HOT-MIX ASPHALT SHOULDERS, (6.5")
- ⑤a HOT-MIX ASPHALT SHOULDERS, (8.5")
- ⑤b CA 6 OR CA 10 AGGREGATE (INCLUDED IN COST OF HMA SHOULDER)
- ⑥ TYPE A GUTTER
- ⑦ HOT-MIX ASPHALT SURFACE COURSE, MIX "C", N50 (1 1/2")
- ⑧ STEEL PLATE BEAM GUARDRAIL, TYPE A
- ⑨ EXISTING HMA SURFACE
- ⑩ EXISTING HMA PAVEMENT
- ⑪ EXISTING AGGREGATE SHOULDER
- ⑫ EXISTING TURF SHOULDER
- ⑬ EXISTING GUTTER, TYPE A
- ⑭ EXISTING HMA SHOULDER
- ⑮ EXISTING AGGREGATE BASE
- ⑯ TOPSOIL FURNISH & PLACE 4", SEEDING, EROSION CONTROL BLANKET & FERTILIZER NUTRIENTS
- ⑰ STRIP CRACK CONTROL TREATMENT
- ⑱ AGGREGATE SHOULDER, TYPE A (8.5")

NOTE:
THE RATE OF APPLICATION FOR HMA SURFACE & BINDER COURSE
SHALL BE 112 LB./SQ. YD./IN.

FILE NAME =	USER NAME = #USER#
H:\PROJECTS\2945\DGNS\09285507\205507	YPI.dgn
PLOT SCALE = 5.0000" / IN.	
PLOT DATE = 8/7/2009	

DESIGNED - JAM	REVISED -
DRAWN - JAM	REVISED -
CHECKED - BAP	REVISED -
DATE - 8/7/2009	REVISED -

**STATE OF ILLINOIS
DEPARTMENT OF TRANSPORTATION**

**US ROUTE 20
PROPOSED TYPICAL SECTIONS**

SCALE: NONE SHEET NO. 2 OF 3 SHEETS STA. N/A TO STA. N/A

F.A.P. RTE. 301	SECTION 21 VBR	COUNTY STEPHENSON	TOTAL SHEETS 112	SHEET NO. 18
	FED. ROAD DIST. NO. [ILLINOIS] FED. AID PROJECT			CONTRACT NO. 64D15