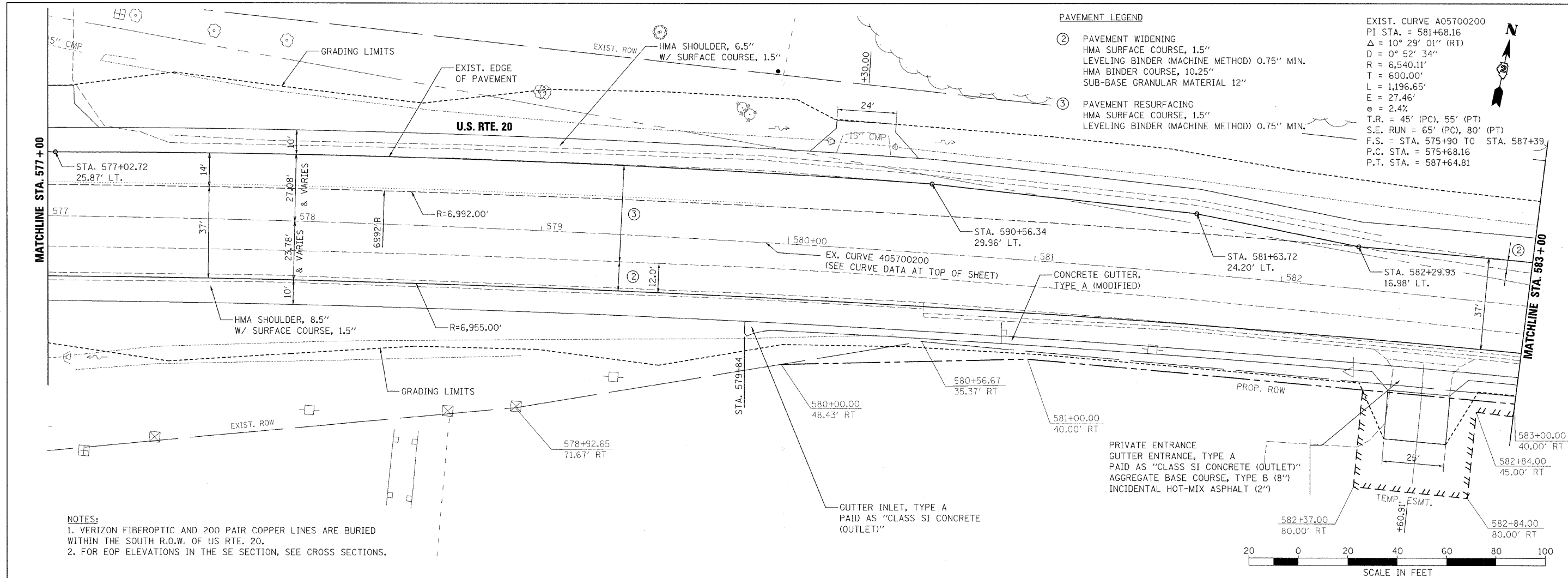


DATE	
BY	
PLAN	
SURVEYED	
ALIGNED	
CHECKED	
NO.	

DATE	
BY	
PROFILE	
SURVEYED	
GRADES	
CHECKED	
NO.	

HARRY A. HOFFMAN & ASSOCIATES, INC.
 ENGINEERS AND ARCHITECTS
 1111 W. JACKSON BLVD.
 CHICAGO, ILL. 60604
 TEL: 312-467-8771



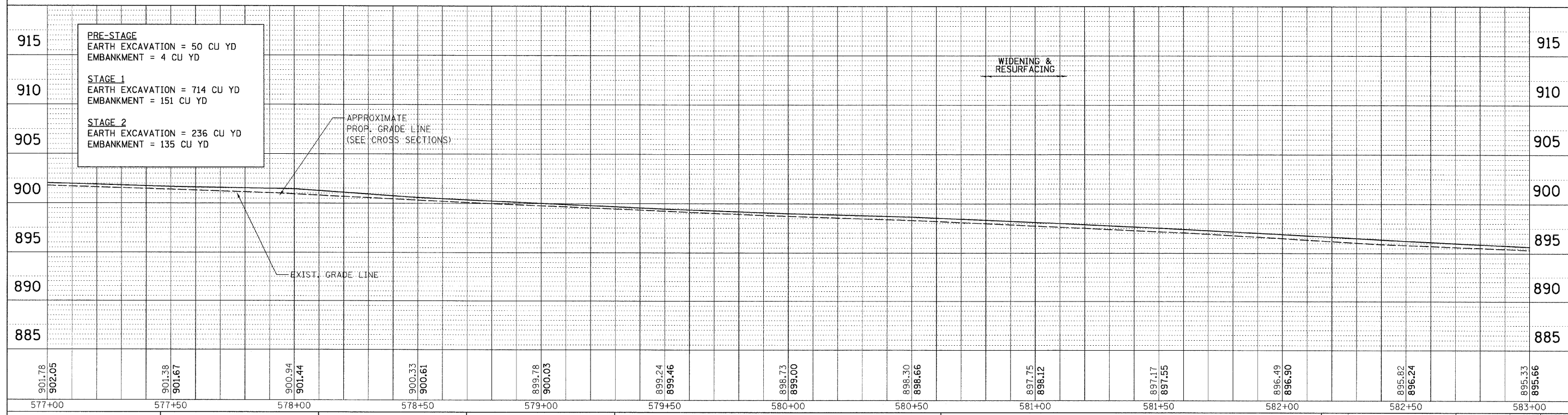
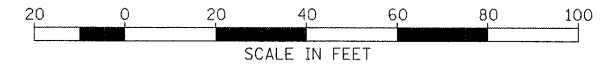
PAVEMENT LEGEND

- ② PAVEMENT WIDENING
HMA SURFACE COURSE, 1.5"
LEVELING BINDER (MACHINE METHOD) 0.75" MIN.
HMA BINDER COURSE, 10.25"
SUB-BASE GRANULAR MATERIAL 12"
- ③ PAVEMENT RESURFACING
HMA SURFACE COURSE, 1.5"
LEVELING BINDER (MACHINE METHOD) 0.75" MIN.

EXIST. CURVE A05700200
 PI STA. = 581+68.16
 $\Delta = 10^\circ 29' 01''$ (RT)
 $D = 0^\circ 52' 34''$
 $R = 6,540.11'$
 $T = 600.00'$
 $L = 1,196.65'$
 $E = 27.46'$
 $e = 2.4\%$
 $T.R. = 45'$ (PC), $55'$ (PT)
 $S.E. RUN = 65'$ (PC), $80'$ (PT)
 $F.S. = STA. 575+90$ TO $STA. 587+39$
 $P.C. STA. = 575+68.16$
 $P.T. STA. = 587+64.81$



- NOTES:**
1. VERIZON FIBEROPTIC AND 200 PAIR COPPER LINES ARE BURIED WITHIN THE SOUTH R.O.W. OF US RTE. 20.
 2. FOR EOP ELEVATIONS IN THE SE SECTION, SEE CROSS SECTIONS.



PRE-STAGE
 EARTH EXCAVATION = 50 CU YD
 EMBANKMENT = 4 CU YD
STAGE 1
 EARTH EXCAVATION = 714 CU YD
 EMBANKMENT = 151 CU YD
STAGE 2
 EARTH EXCAVATION = 236 CU YD
 EMBANKMENT = 135 CU YD

FILE NAME =	USER NAME = #USER#	DESIGNED AAF	REVISED -	STATE OF ILLINOIS DEPARTMENT OF TRANSPORTATION	US ROUTE 20 PROPOSED ROADWAY PLAN & PROFILE	F.A.P. RTE.	SECTION	COUNTY	TOTAL SHEETS	SHEET NO.	
H:\PROJECTS\2945\XGMS\02\0507\205507PL05.dgn		DRAWN AAF	REVISED -			301	21 VBR	STEPHENSON	112	29	
PLOT SCALE = 20.0000' / IN.		CHECKED BAP	REVISED -			CONTRACT NO. 64D15					
PLOT DATE = 8/7/2009		DATE - 8/7/2009	REVISED -			FED. ROAD DIST. NO. [ILLINOIS] FED. AID PROJECT					