

8/16/2009

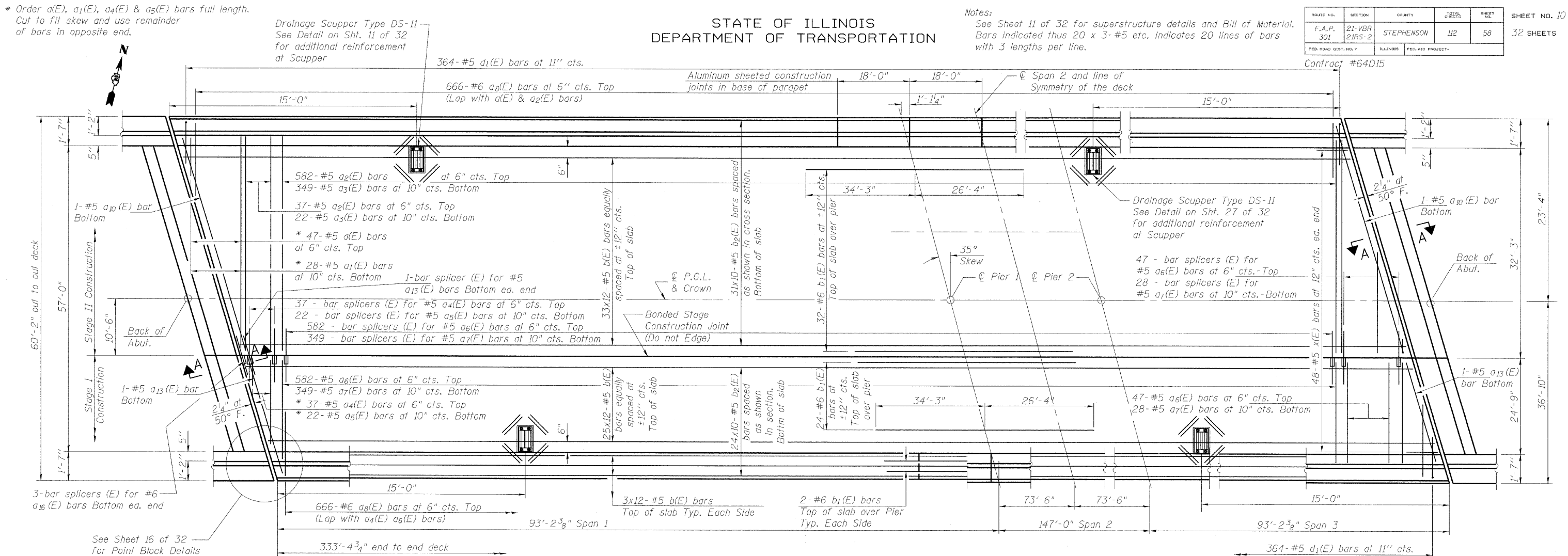
8:19:57 AM

H:\Pro\proj\2945\DCMS\Structural\NCR\RRUS20 OVER ICR PREFINAL DWG\5100956-64D50-010-DECKPLAN.dgn

STATE OF ILLINOIS DEPARTMENT OF TRANSPORTATION

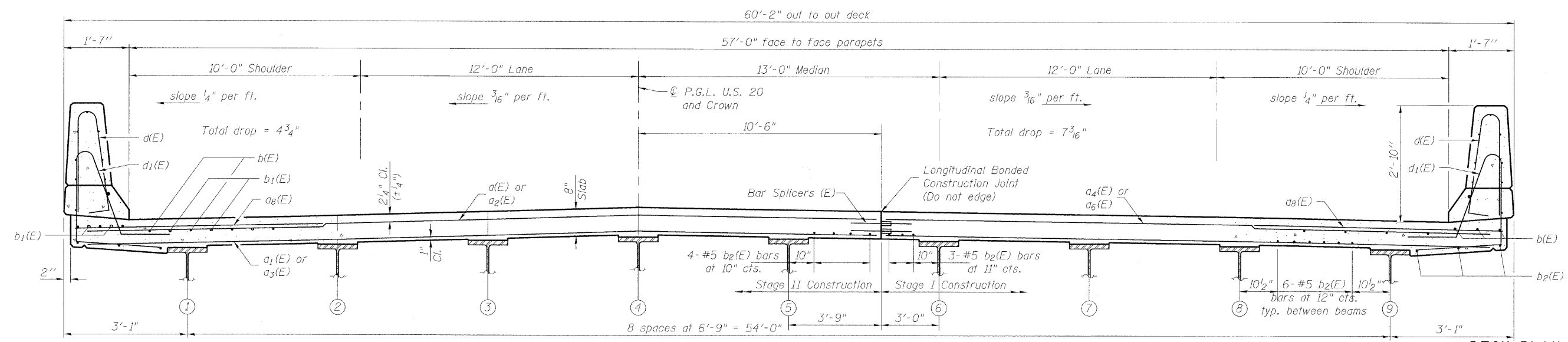
Notes: See Sheet 11 of 32 for superstructure details and Bill of Material. Bars indicated thus 20 x 3-#5 etc. indicates 20 lines of bars with 3 lengths per line.

Table with columns: ROUTE NO., SECTION, COUNTY, FEEL SHEETS, SHEET NO., F.A.P., F.E.D. ROAD DIST. NO. 7, BILLINGS, FEEL AID PROJECT. Values include 301, 21-VBR 21RS-2, STEPHENSON, 112, 58, 32 SHEETS.



PARTIAL PLAN

Minimum Bar Laps #5 bar = 2'-2" #6 bar = 2'-7"



CROSS SECTION (Looking East)

DECK PLAN

Table with columns: DESIGNED, CHECKED, DRAWN, CHECKED. Values include MMH, CEN, R.VEJAR, CEN.

US 20 OVER ILLINOIS CENTRAL RAILROAD F.A.P. RTE. 301 - SEC. 21-VBR & 21RS-2 STEPHENSON COUNTY STATION 569+56.19 STRUCTURE NO. 089-0077

HOH HARRY O. HEFTER ASSOCIATES, INC. 55 East Jackson Blvd. Suite 600 Chicago, IL 60604 312-346-8131 PROJECT NUMBER 2945