

8/9/59 AM

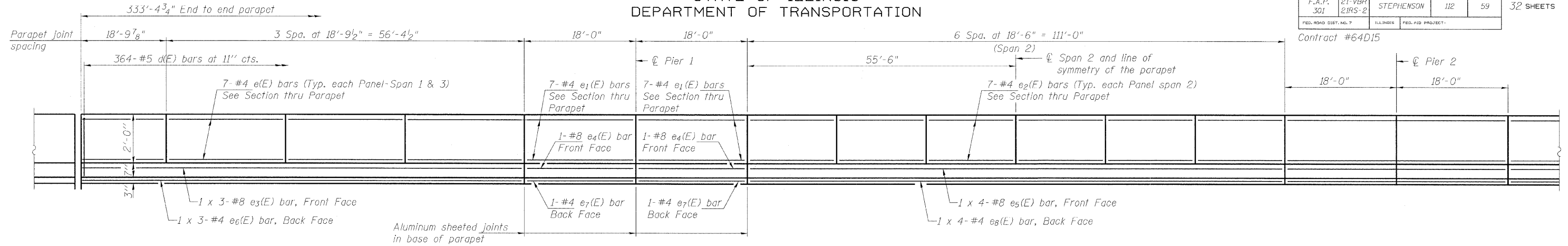
8/6/2009

STATE OF ILLINOIS
DEPARTMENT OF TRANSPORTATION

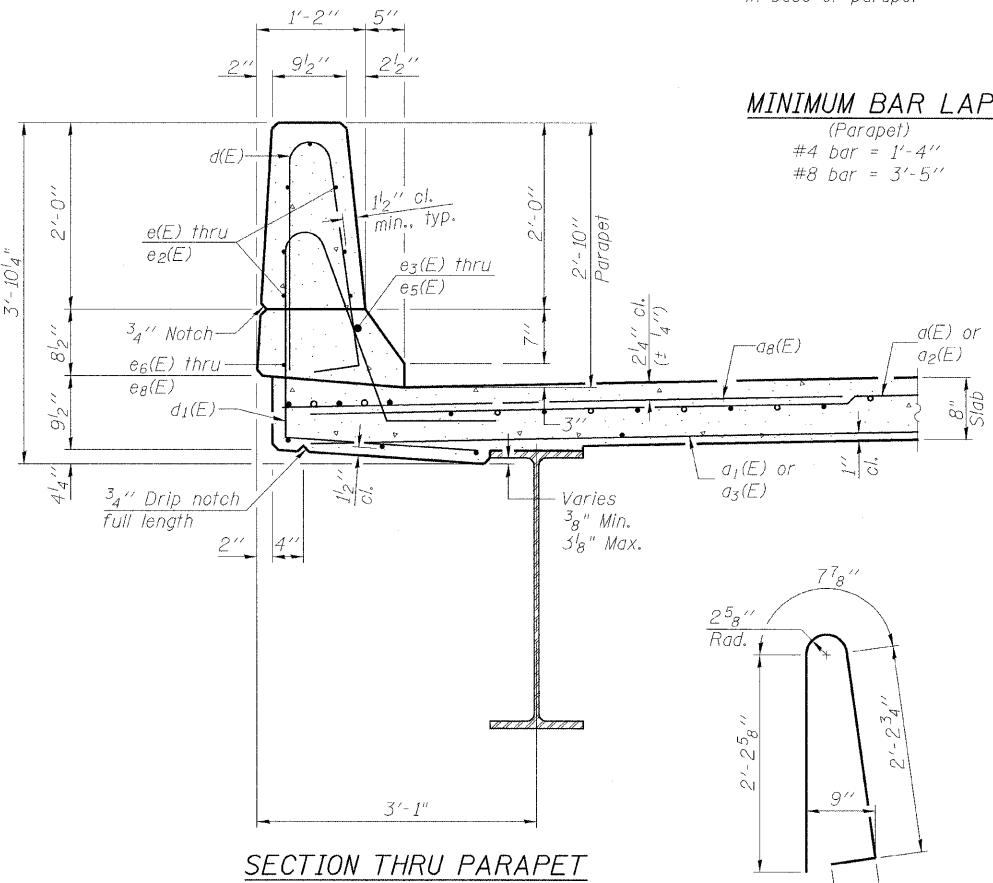
ROUTE NO.	SECTION	COUNTY	TOTAL SHEETS	SHEET NO.
F.A.P. 301	21-VBR 21RS-2	STEPHENSON	112	59
FED. ROAD DIST. NO. 7		ILLINOIS	FED. AID PROJECT-	

SHEET NO. 11
32 SHEETS

Contract #64D15

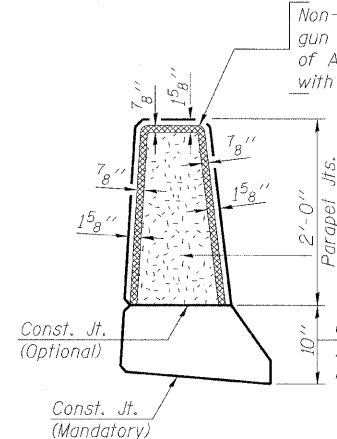


INSIDE ELEVATION OF PARAPET

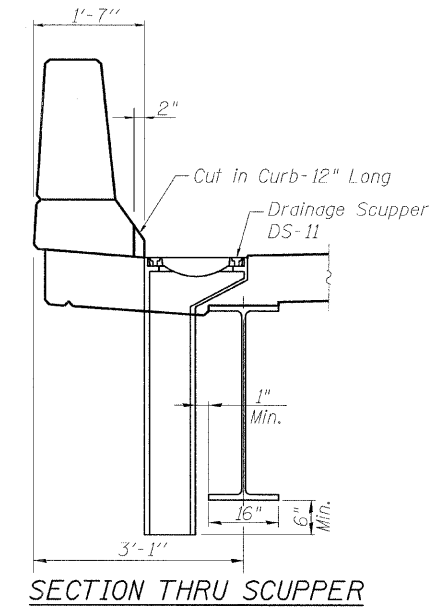


MINIMUM BAR LAP

(Parapet)
#4 bar = 1'-4"
#8 bar = 3'-5"

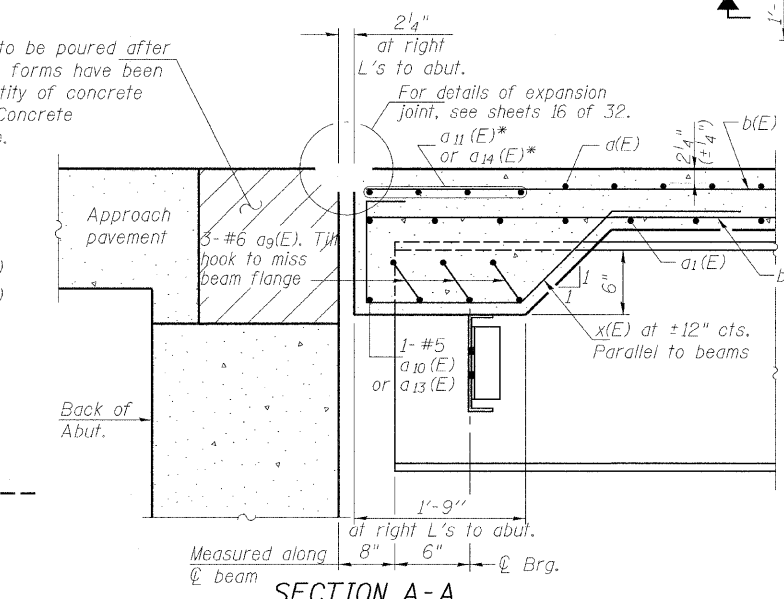
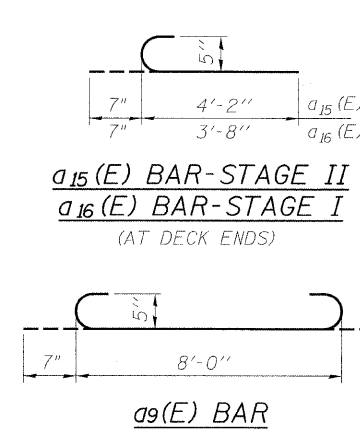
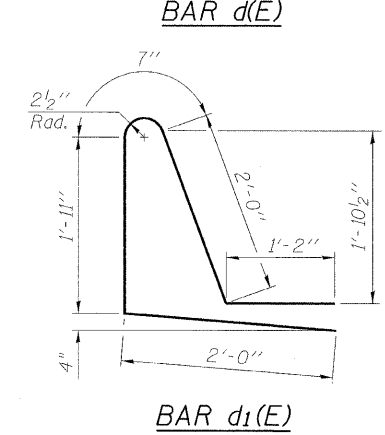
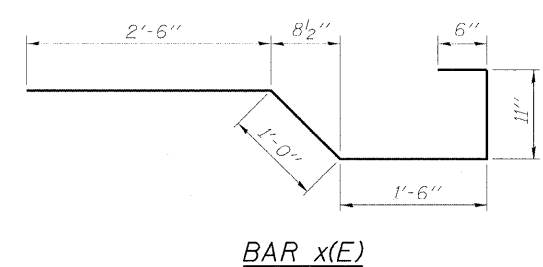
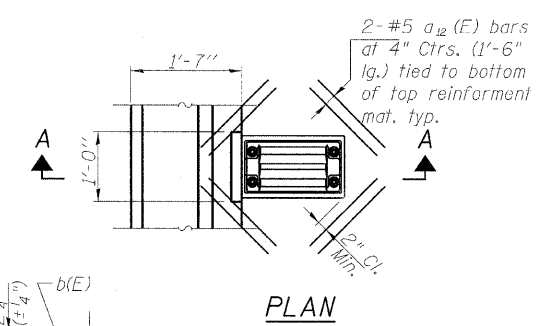


PARAPET JOINT DETAILS



SUPERSTRUCTURE
BILL OF MATERIAL

Bar	No.	Size	Length	Shape
a(E)	47	#5	32'-11"	
a1(E)	28	#5	32'-8"	
a2(E)	619	#5	33'-3"	
a3(E)	371	#5	33'-0"	
a4(E)	37	#5	25'-5"	
a5(E)	22	#5	25'-2"	
a6(E)	629	#5	25'-9"	
a7(E)	377	#5	25'-6"	
a8(E)	1332	#6	6'-0"	
a9(E)	42	#6	9'-2"	
a10(E)	2	#5	40'-8"	
a11(E)	8	#6	40'-8"	
a12(E)	32	#5	1'-6"	
a13(E)	2	#5	31'-7"	
a14(E)	8	#6	31'-7"	
a15(E)	6	#6	4'-9"	
a16(E)	6	#6	4'-3"	
b(E)	768	#5	29'-9"	
b1(E)	120	#6	60'-7"	
b2(E)	550	#5	35'-3"	
d(E)	728	#5	5'-7"	
d1(E)	728	#5	7'-8"	
e(E)	112	#4	18'-5"	
e1(E)	56	#4	17'-8"	
e2(E)	84	#4	18'-6"	
e3(E)	12	#8	33'-11"	
e4(E)	8	#8	17'-8"	
e5(E)	8	#8	31'-1"	
e6(E)	12	#4	32'-0"	
e7(E)	8	#4	17'-9"	
e8(E)	8	#4	28'-11"	
x(E)	96	#5	6'-5"	
Reinforcement Bars, Epoxy Coated			Pound	150,400
Concrete Superstructure			Cu. Yds.	570



SECTION A-A
(Between Beams Only)

* 4-#6 a11(E) bars at 6" spa. Stage II
Place under longitudinal bars
* 4-#6 a14(E) bars at 6" spa. stage I

DESIGNED	MMH
CHECKED	CEN
DRAWN	R.VEJAR
CHECKED	CEN

DECK SECTION AND DETAILS
US 20 OVER ILLINOIS CENTRAL RAILROAD
F.A.P. RTE. 301 - SEC. 21-VBR & 21RS-2
STEPHENSON COUNTY
STATION 569+56.19
STRUCTURE NO. 089-0077

HOH
HARRY O. HETTER-ASSOCIATES, INC.
DESIGN AND CONSULTING ENGINEERS
55 East Jackson Blvd.
Suite 600
Chicago, Illinois
312-346-8131
PROJECT NUMBER
2945

H:\Proj\615\2345\DOCS\Structural\ACCP\RRUS20 OVER ICR PREFINAL DWG\NOI0096-64D50-011-DECKSECT & DETS.dgn