

8/20/08 AM

8/16/2009

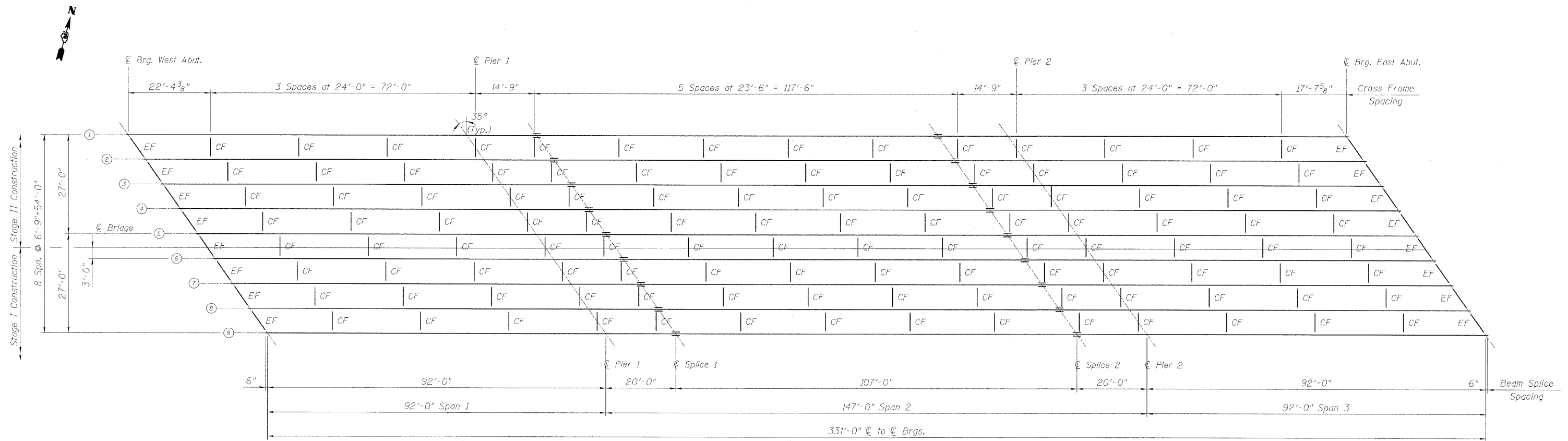
H:\ProJec\152945\DWGS\Struct\152945\NCP\RRUS20 OVER ICR PREFINAL DWGS\100096-64D50-07-STEELFRAMINGPLAN.dgn

STATE OF ILLINOIS
DEPARTMENT OF TRANSPORTATION

ROUTE NO.	SECTION	COUNTY	TOTAL SHEETS	SHEET NO.
F.A.P. 301	21-VBR 21RS-2	STEPHENSON	112	65
FED. ROAD DIST. NO. 7	ILLINOIS		FED. AID PROJECT	

SHEET NO. 17
32 SHEETS

Contract #64D15



FRAMING PLAN

See Sheet 19 of 32 for Cross Frame (CF) and End Frame (EF) Details

TOP OF WEB ELEVATION FOR FABRICATION									
Girder Number	1	2	3	4	5	6	7	8	9
⊕ BRG. W. ABUT.	906.556	906.747	906.908	907.061	907.002	906.941	906.879	906.805	906.705
⊕ PIER 1	907.252	907.418	907.554	907.682	907.597	907.511	907.424	907.325	907.200
⊕ SPLICE 1	907.357	907.517	907.649	907.771	907.681	907.590	907.497	907.393	907.263
⊕ SPLICE 2	907.476	907.639	907.708	907.800	907.680	907.559	907.437	907.303	907.142
⊕ PIER 2	907.413	907.538	907.634	907.721	907.596	907.470	907.342	907.203	907.038
⊕ BRG. N. ABUT.	906.917	907.016	907.087	907.149	906.999	906.848	906.695	906.530	906.340

DESIGNED	MMH
CHECKED	CEN
DRAWN	R.VEJAR
CHECKED	CEN

STEEL FRAMING PLAN
US 20 OVER ILLINOIS CENTRAL RAILROAD
F.A.P. RTE. 301 - SEC. 21-VBR & 21RS-2
STEPHENSON COUNTY
STATION 569+56.19
STRUCTURE NO. 089-0077

HOH HARRY O. HEFTER-ASSOCIATES, INC.
 DESIGN AND CONSULTING ENGINEERS
 95 East Jackson Blvd.
 Suite 800
 Chicago, IL 60604
 312-246-4131
 PROJECT NUMBER
2945