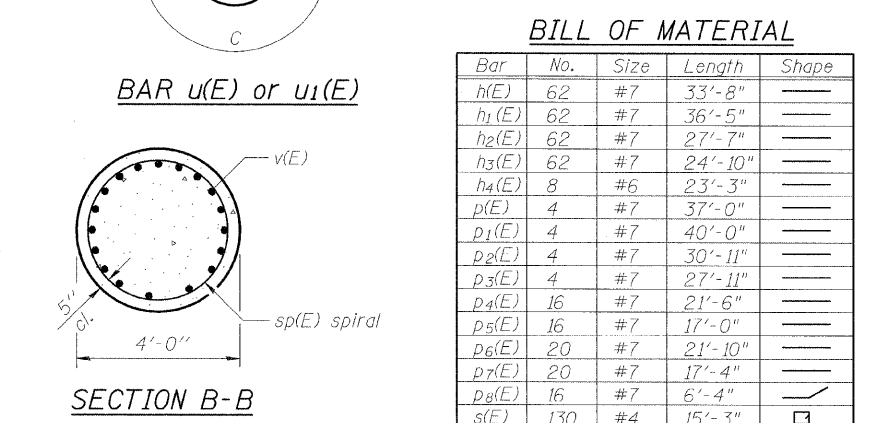
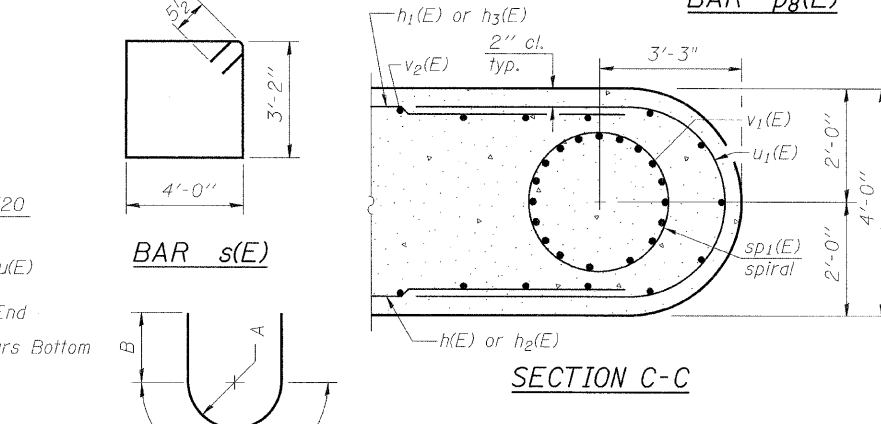
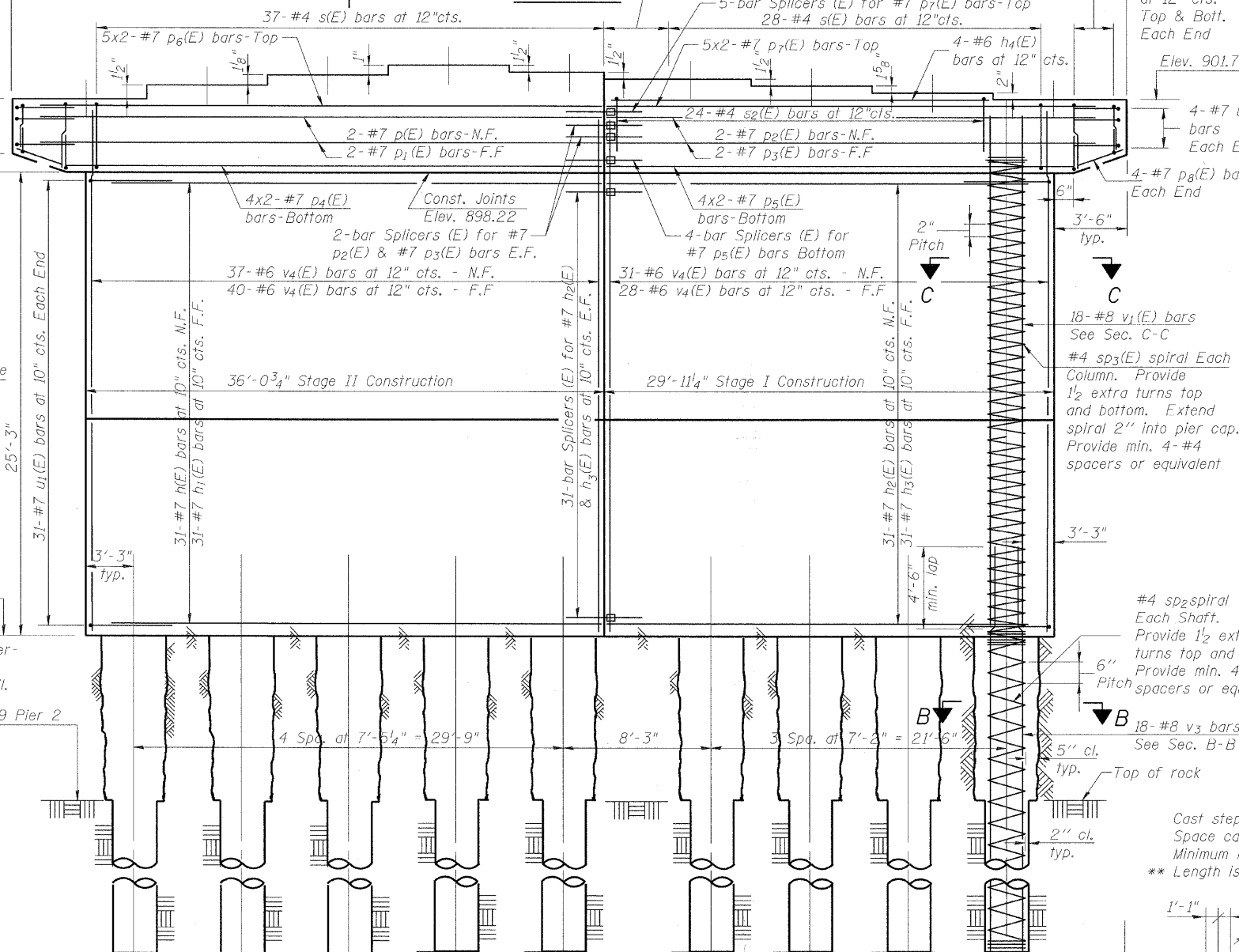
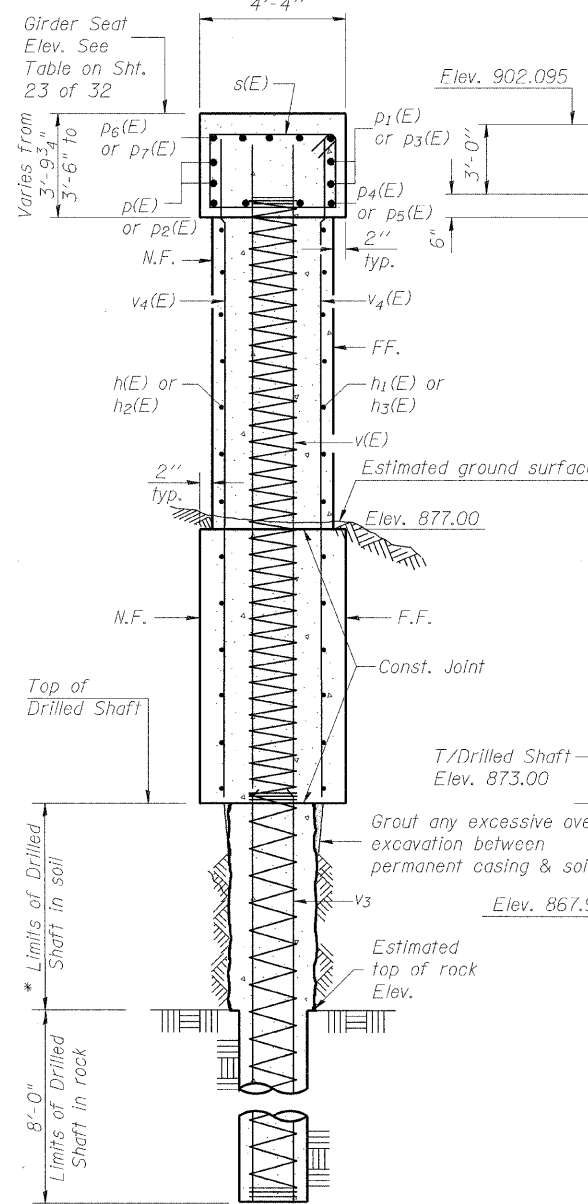
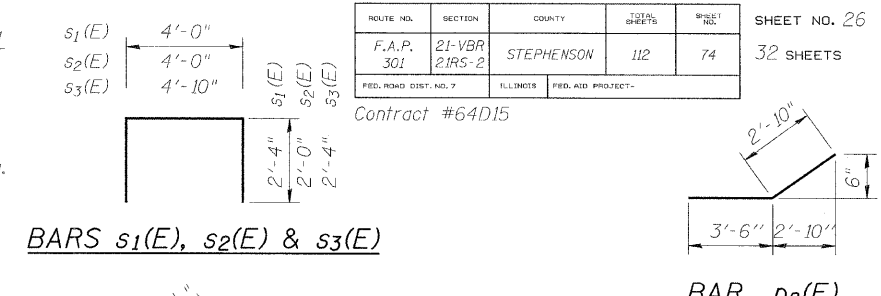
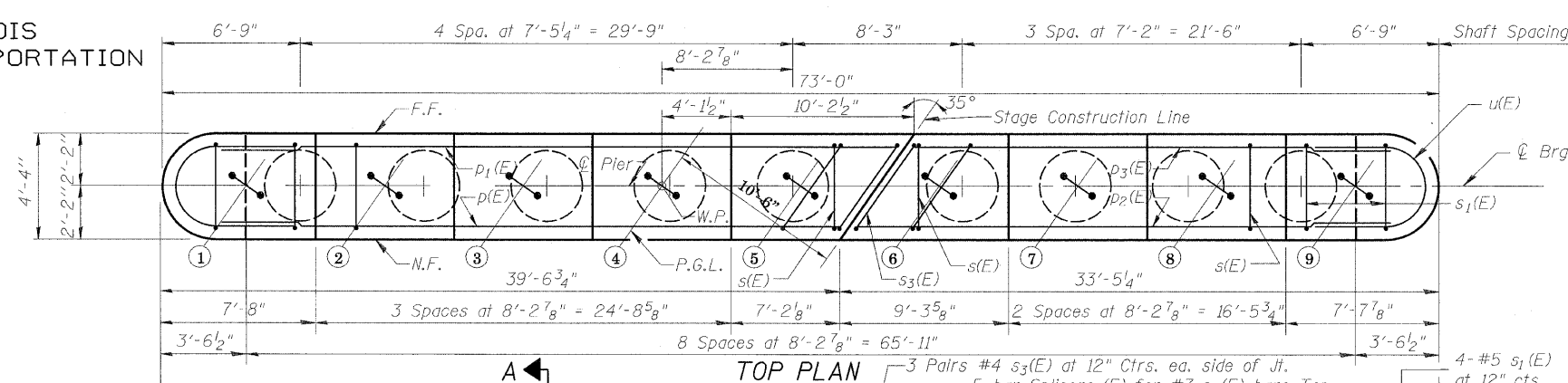


8/16/2009
 8/16/2009
 H:\P\o\lects\2945\DCNS\Structural\CCPRRUS20 OVER ICR PREFINAL DWG\5100096-64D50-026-PIER2.dgn

STATE OF ILLINOIS
DEPARTMENT OF TRANSPORTATION

ROUTE NO.	SECTION	COUNTY	TOTAL SHEETS	SHEET NO.	SHEET NO. 26
F.A.P. 301	21-VBR 21RS-2	STEPHENSON	112	74	32 SHEETS
FED. ROAD DIST. NO. 7		ILLINOIS	FED. AID PROJECT-		Contract #64D15

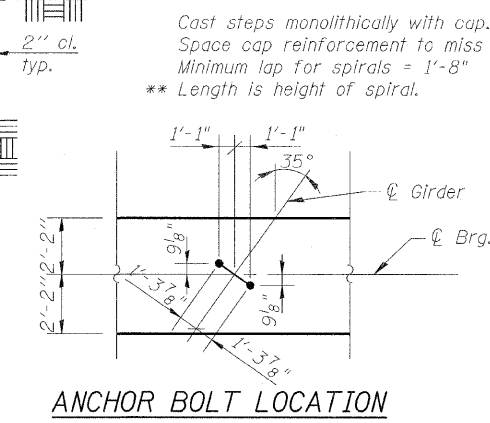


BILL OF MATERIAL

Bar No.	Size	Length	Shape
h(E)	#2	33'-8"	—
h1(E)	#2	36'-5"	—
h2(E)	#2	27'-7"	—
h3(E)	#2	24'-10"	—
h4(E)	#8	23'-3"	—
p1(E)	#4	37'-0"	—
p2(E)	#4	40'-0"	—
p3(E)	#4	30'-11"	—
p4(E)	#4	27'-11"	—
p5(E)	#4	21'-6"	—
p6(E)	#4	17'-0"	—
p7(E)	#4	21'-10"	—
p8(E)	#4	17'-4"	—
s(E)	#4	6'-4"	—
s1(E)	#5	8'-8"	U
s2(E)	#4	8'-0"	U
s3(E)	#4	9'-6"	U
sp	#4	14'-0"	—
sp1(E)	#4	25'-9"	—
sp2	#4	13'-1"	—
sp3(E)	#4	25'-5"	—
u(E)	#7	13'-1"	—
u1(E)	#7	12'-7"	—
v(E)	#8	28'-6"	—
v1(E)	#8	28'-10"	—
v2	#8	18'-6"	—
v3	#8	17'-7"	—
v4	#6	28'-7"	—
Structure Excavation	Cu. Yd.	85	
Concrete Structures	Cu. Yd.	610	
Reinforcement Bars	Pound	31,430	
Reinforcement Bars, Epoxy Coated	Pound	70,820	
Drilled Shaft in Soil	Cu. Yd.	46.5	
Drilled Shaft in Rock	Cu. Yd.	51.3	

A, B & C DIMENSIONS

Bar	A	B	C
u(E)	2'-0"	3'-5"	6'-3"
u1(E)	1'-10"	3'-5"	5'-9"



DESIGNED	MMH
CHECKED	CEN
DRAWN	R.VEJAR
CHECKED	CEN

* The quantities and detailing are based on the estimated elevations shown on the plans. The actual elevations may differ at each shaft and corresponding adjustments shall be made to the drilled shaft and reinforcement quantities and payment limits.

NOTE:
Drilled Shafts are designed for allowable end bearing pressure of 30 tsf on rock.
For bearing seat elevations see sheet 23 of 32.

LEGEND:
N.F. = Near Face
F.F. = Far Face
E.F. = Each Face

**PIER 2
STRUCTURE NO.
US 20 OVER ILLINOIS CENTRAL RAILROAD
F.A.P. RTE. 301 - SEC. 21-VBR & 21RS-2
STEPHENSON COUNTY
STATION 569+56.19
STRUCTURE NO. 089-0077**