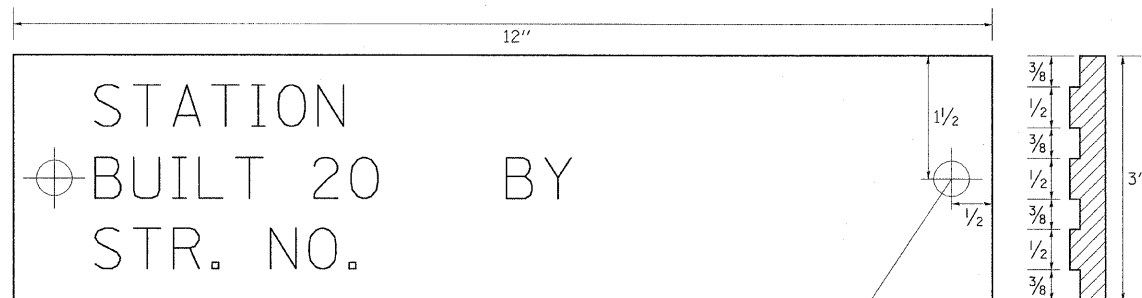
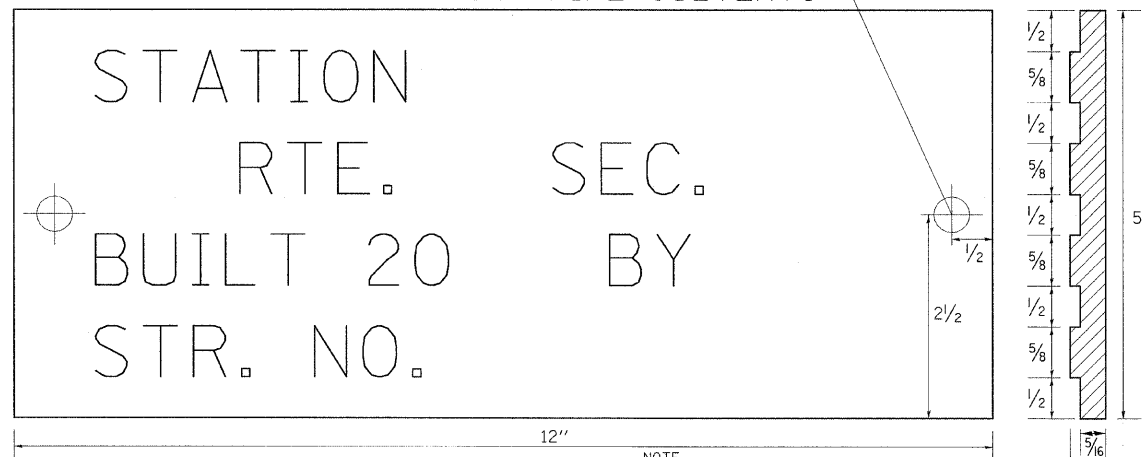


NAME PLATE FOR CULVERTS

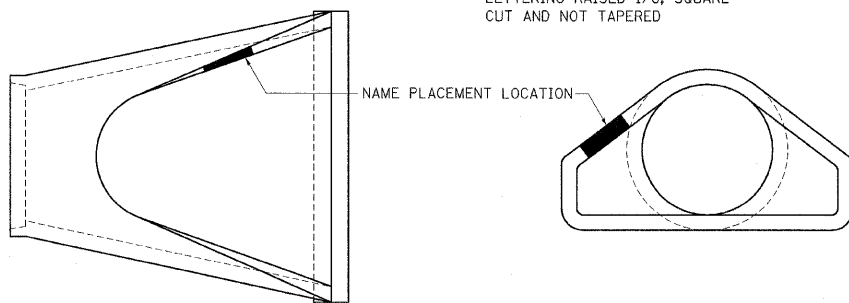
FOR 24"-42" PIPE CULVERTS



FOR 48"-84" PIPE CULVERTS



NOTE
LETTERING RAISED 1/8, SQUARE
CUT AND NOT TAPERED



DESIGNERS NOTE

SEE STD. 515001

USE STANDARD 515001 FOR BRIDGES AND MULTI-CELL CULVERTS WITH SPANS OF 20' OR MORE MEASURED ALONG THE CENTERLINE AT THE HIGHWAY.

USE THIS DETAIL FOR ALL OTHER PIPE CULVERTS & BOX CULVERTS WITH STRUCTURE NUMBERS. INCLUDE THE INFORMATION TO FILL OUT THE NAME PLATE FOR EACH CULVERT.

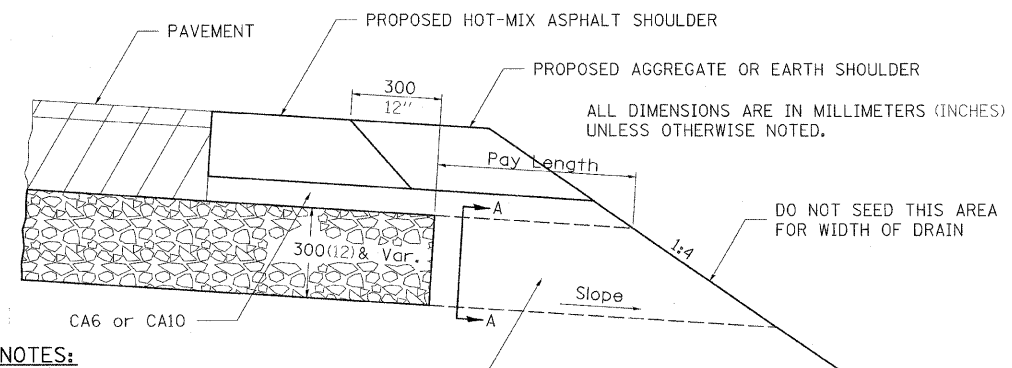
IN BOTH CASES INCLUDE A PAY ITEM FOR NAME PLATES.

REVISED - 5-7-09

STATION	STRUCTURE NO.

NAME PLATE FOR CULVERTS 88.2

DRAIN FOR AGGREGATE BASE COURSE



NOTES:

The rock outlets shall be constructed using CA7 and will be paid for at the contract unit price per m² (SQ. YD.) for DRAIN FOR AGGREGATE BASE COURSE. The thickness shall be the same as the adjacent sub-base material as noted on the plans and shall include the cost of the filter fabric. The Rock outlets will be measured in m² (SQ. YD.), the width being 900 (36) by the length shown above. The cost of the CA6 or CA10 under the shoulder shall be included in the contract unit price per m² (SQ. YD.) for SUB-BASE GRANULAR MATERIAL, TYPE A of the thickness specified. The filter fabric to be used shall conform to the filter fabric used for Riprap.

REVISED - 10-10-06

ROCK OUTLET AT ALL LOW POINTS TO BE 900 (36) WIDE AND EXTEND TO FORESLOPE



SECTION A-A

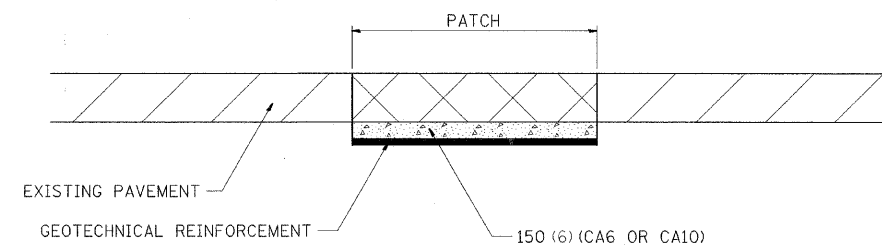
NOTE: Slope same as shoulder with 2% min.

X0325519

DRAIN FOR AGGREGATE BASE COURSE

96.4

SUBGRADE REPLACEMENT



NOTES:

THE CA 6 OR CA 10 SHALL BE COMPACTED IN A MANNER APPROVED BY THE ENGINEER. IF THE MOISTURE CONTENT OF THE MATERIAL IS SUCH THAT COMPACTION SATISFACTORY TO THE ENGINEER CANNOT BE OBTAINED, SUFFICIENT WATER SHALL BE ADDED SO THAT SATISFACTORY COMPACTION CAN BE OBTAINED.

THE CA 6 OR CA 10 WILL BE PAID FOR AT THE CONTRACT UNIT PRICE PER CU YD FOR GRANULAR SUBGRADE REPLACEMENT

THE GEOTECHNICAL REINFORCEMENT WILL BE PAID FOR AT THE CONTRACT UNIT PRICE PER SQ YD FOR GEOTECHNICAL REINFORCEMENT

ALL DIMENSIONS ARE IN MILLIMETERS (INCHES) UNLESS OTHERWISE NOTED.

REVISED - 1-09-08

SUBGRADE REPLACEMENT

97.4

REVISED -	REGION 2 / DISTRICT 2 STANDARD	F.A. RTE.	SECTION	COUNTY	TOTAL SHEETS	SHEET NO.
REVISED -					112	92
REVISED -		SCALE: 1:20000 ' / IN.	SHEET NO. OF SHEETS STA. TO STA.		CONTRACT NO.	
REVISED -		FED. ROAD DIST. NO. ILLINOIS FED. AID PROJECT				

PLOT DATE = 8/6/2009