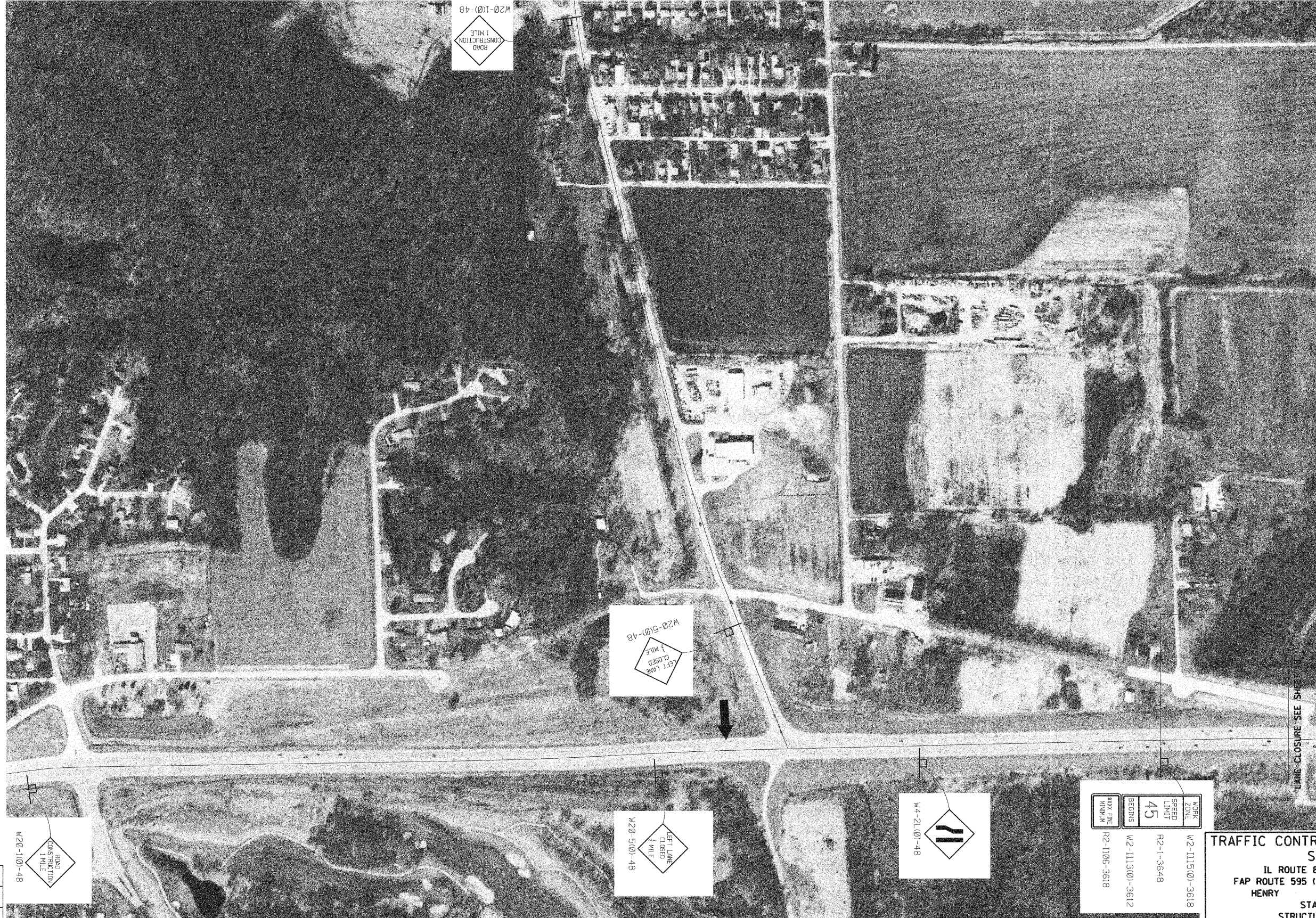


STATE OF ILLINOIS  
DEPARTMENT OF TRANSPORTATION

ROUTE NO.	SECTION	COUNTY	TOTAL SHEETS	SHEET NO.
IL 84	(1,2)B-2M	HENRY and ROCK ISLAND	23	18
FED. ROAD DIST. NO. 7		ILLINOIS	FED. AID PROJECT-	

CONTRACT 64E18



DESIGNED	M.H.
CHECKED	P.B.
DRAWN	C.L.
CHECKED	M.H./P.B.

WORK ZONE	W2-1115(0)-3618
SPEED LIMIT	45
BEGINS	R2-1-3648
ENDS	W2-1113(0)-3612
BYX FINE NUMBER	R2-1105-3618

**TRAFFIC CONTROL AND PROTECTION**  
**STAGE I**  
IL ROUTE 84 OVER ROCK RIVER  
FAP ROUTE 595 (IL 84), SECTION (1,2)B-2-M  
HENRY COUNTY  
STATION 189+44  
STRUCTURE NO. 037-0128

SCALE: 1" = 200' DATE: Sept. 30, 2009  
Soodan & Associates, Inc.  
100 North LaSalle Street, Suite 1800  
Chicago, Illinois 60602