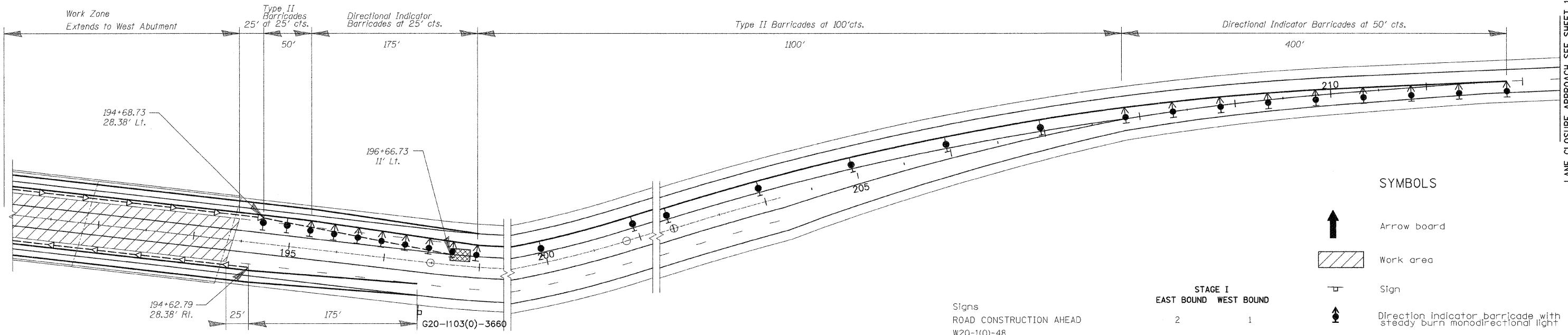
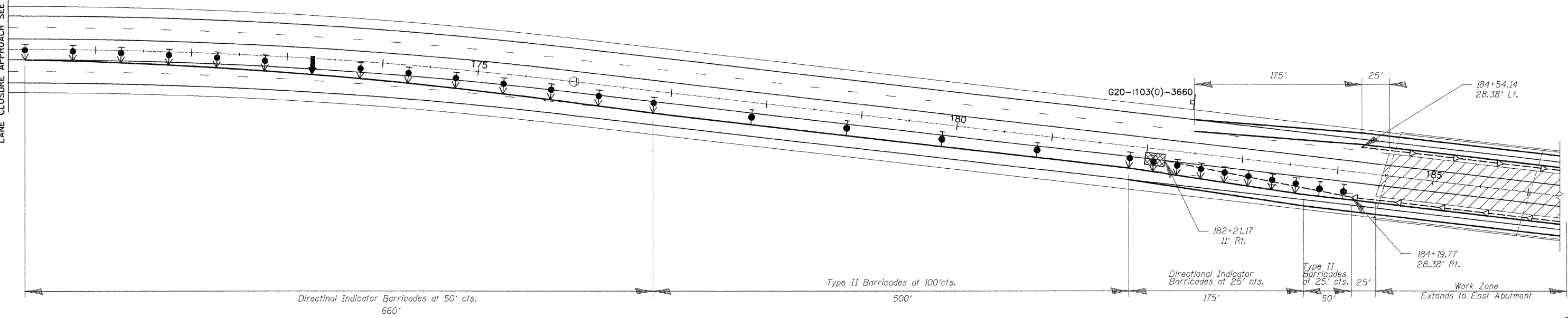


STATE OF ILLINOIS
DEPARTMENT OF TRANSPORTATION

ROUTE NO.	SECTION	COUNTY	TOTAL SHEETS	SHEET NO.
IL 84	11,21B-2M	HENRY and ROCK ISLAND	23	19
FED. ROAD DIST. NO. 7	ILLINOIS	FED. AID PROJECT-	CONTRACT 64E18	

LANE CLOSURE APPROACH SEE SHEET 17



SUMMARY OF QUANTITIES TRAFFIC CONTROL AND PROTECTION

	STAGE I	
	EAST BOUND	WEST BOUND
Arrow board	2	2
Direction indicator barricade with steady burn monodirectional light	21	17
Type II barricade with steady burn monodirectional light	6	11
Impact attenuator	1	1
Temporary concrete barrier	1300'	1300'

Signs
ROAD CONSTRUCTION AHEAD
W20-1(0)-48

LEFT LANE CLOSED 1/2 MILE
W20-5(0)-48

W4-2L(0)-48 (lane ends)
W1-4R(0)-48
or STAY IN YOUR LANE


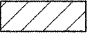






WORK ZONE
W2-1115(0)-3618
SPEED LIMIT 55
R2-1-3648
BEGINS
W2-1113(0)-3612
#XXX FINE MINIMUM
W21-1106(0)-3618

END WORK ZONE SPEED LIMIT
G20-1103(0)-3660

STAGE I
EAST BOUND WEST BOUND

ROAD CONSTRUCTION AHEAD	2	1
LEFT LANE CLOSED 1/2 MILE	2	-
W4-2L(0)-48 (lane ends)	1	-
W1-4R(0)-48 or STAY IN YOUR LANE	-	1
WORK ZONE	1	1
W2-1115(0)-3618	1	1
SPEED LIMIT 55	1	1
R2-1-3648	1	1
BEGINS	1	1
W2-1113(0)-3612	1	1
#XXX FINE MINIMUM	1	1
W21-1106(0)-3618	1	1
END WORK ZONE SPEED LIMIT	1	1
G20-1103(0)-3660	1	1

SYMBOLS

-  Arrow board
-  Work area
-  Sign
-  Direction indicator barricade with steady burn monodirectional light
-  Type II barricade, drum, or vertical barricade with steady burn monodirectional light
-  Temporary concrete barrier
-  Type C Monodirectional reflector
-  Impact attenuator

DESIGNED	M.H.
CHECKED	P.B.
DRAWN	C.L.
CHECKED	M.H./P.B.

TRAFFIC CONTROL AND PROTECTION
STAGE I
IL ROUTE 84 OVER ROCK RIVER
FAP ROUTE 595 (IL 84), SECTION 11,21B-2-M
HENRY COUNTIES
STATION 189+44
STRUCTURE NO. 037-012B

SCALE: 1" = 50' DATE: Sept. 30, 2009
Soodan & Associates, Inc.
100 North LaSalle Street, Suite 1800
Chicago, Illinois 60602

LANE CLOSURE APPROACH SEE SHEET 19