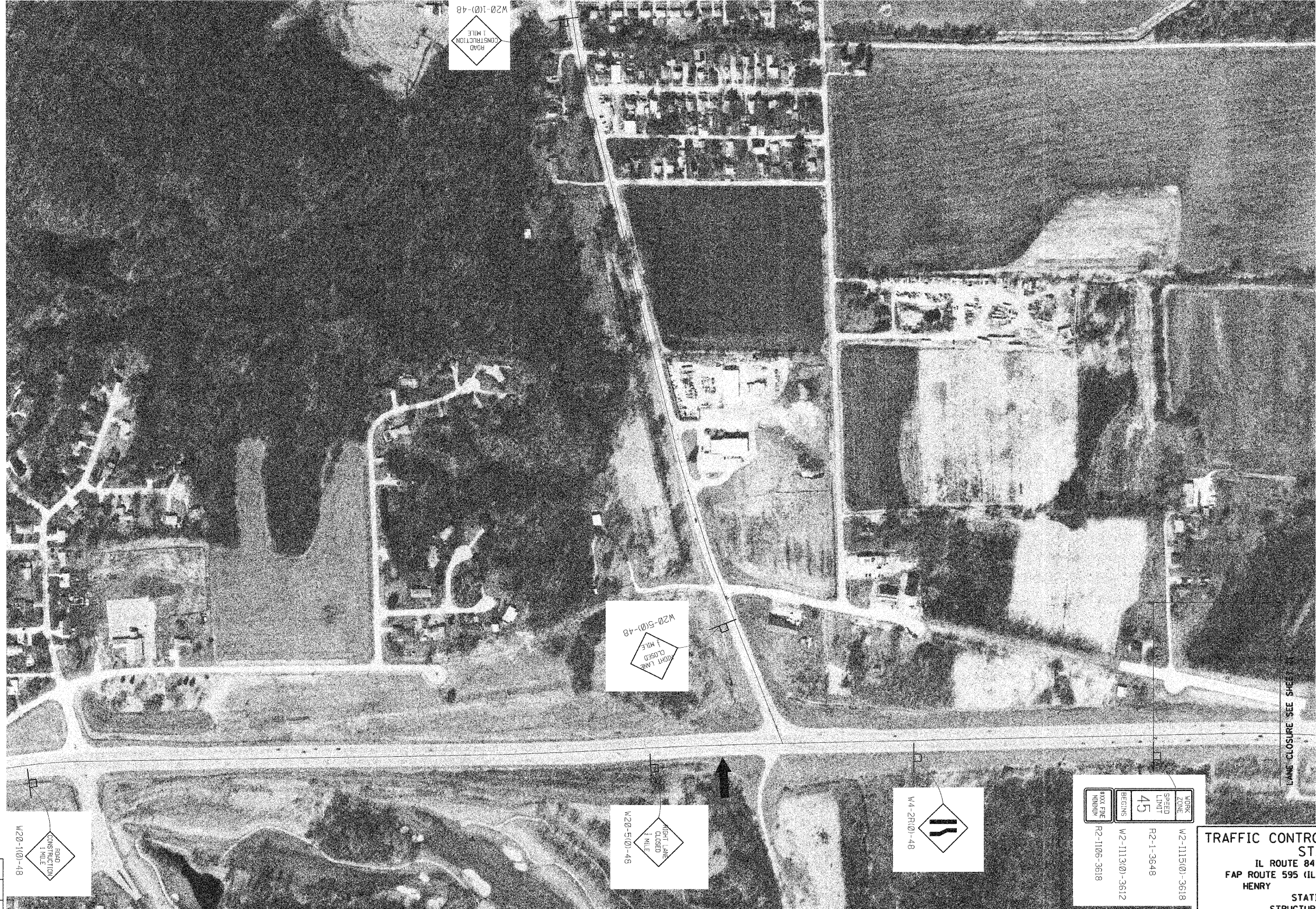


STATE OF ILLINOIS  
DEPARTMENT OF TRANSPORTATION

ROUTE NO.	SECTION	COUNTY	TOTAL SHEETS	SHEET NO.
IL 84	11,21B-2M	HENRY and ROCK ISLAND	23	21
FED. ROAD DIST. NO. 7 ILLINOIS FED. AID PROJECT-				

CONTRACT 64E18



DESIGNED	M.H.
CHECKED	P.B.
DRAWN	C.L.
CHECKED	M.H./P.B.

WORK ZONE	W2-1115(0)-3618
BASED LANE	R2-1-3648
45	
BEGINS	W2-1113(0)-3612
ENDS	R2-1105-3618

**TRAFFIC CONTROL AND PROTECTION**  
**STAGE II**  
 IL ROUTE 84 OVER ROCK RIVER  
 FAP ROUTE 595 (IL 84), SECTION 11,21B-2-M  
 HENRY COUNTIES  
 STATION 189+44  
 STRUCTURE NO. 037-0128

SCALE: 1" = 200' DATE: Sept. 30, 2009  
 Soodan & Associates, Inc.  
 100 North LaSalle Street, Suite 1800  
 Chicago, Illinois 60602