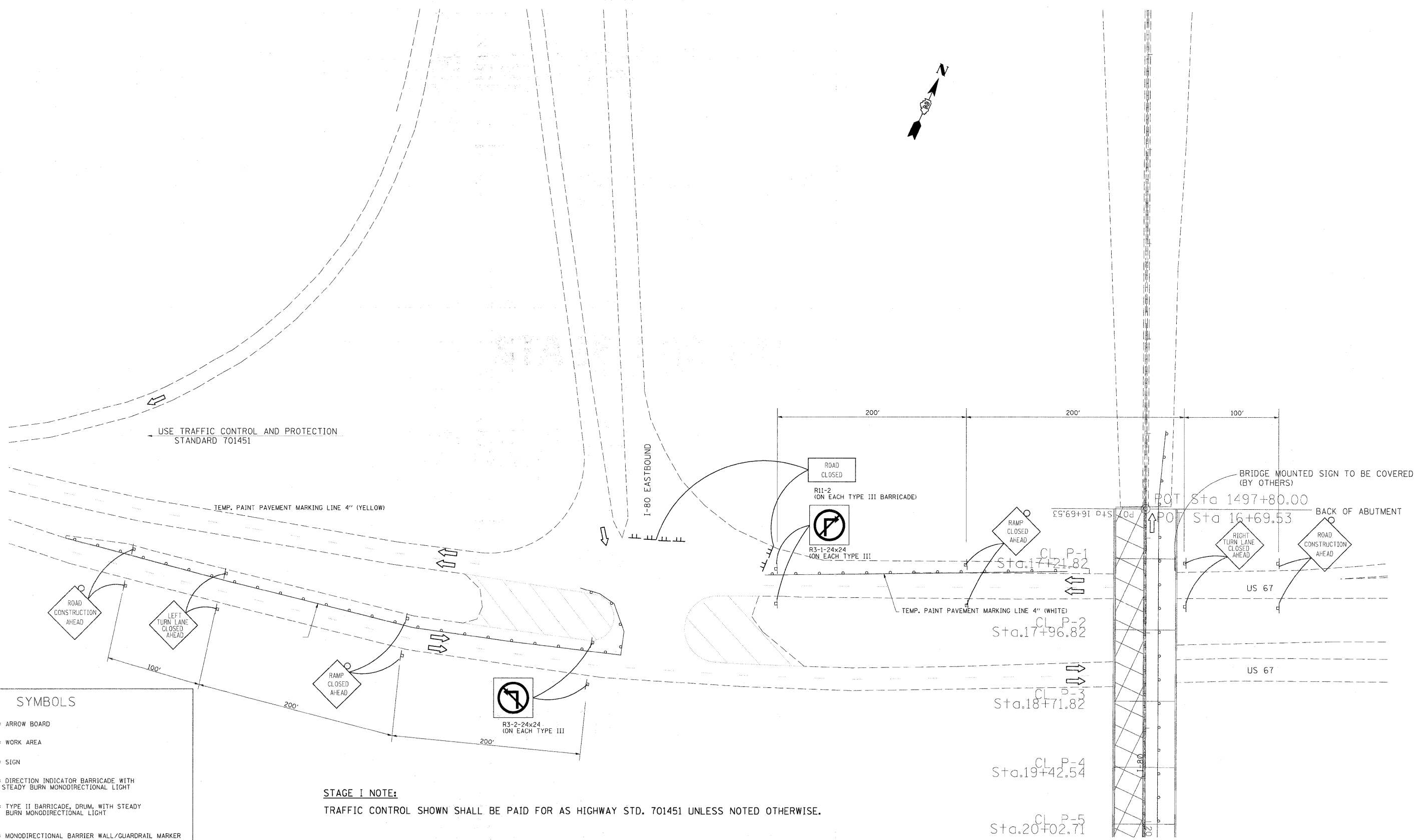


STAGE I (IOWA)



USE TRAFFIC CONTROL AND PROTECTION STANDARD 701451

TEMP. PAINT PAVEMENT MARKING LINE 4" (YELLOW)

I-80 EASTBOUND

BRIDGE MOUNTED SIGN TO BE COVERED (BY OTHERS)

Sta. 1497+80.00

Sta. 16+69.53

BACK OF ABUTMENT

US 67

US 67

SYMBOLS	
	= ARROW BOARD
	= WORK AREA
	= SIGN
	= DIRECTION INDICATOR BARRICADE WITH STEADY BURM MONODIRECTIONAL LIGHT
	= TYPE II BARRICADE, DRUM, WITH STEADY BURM MONODIRECTIONAL LIGHT
	= MONODIRECTIONAL BARRIER WALL/GUARDRAIL MARKER
	= IMPACT ATTENUATOR

STAGE I NOTE:

TRAFFIC CONTROL SHOWN SHALL BE PAID FOR AS HIGHWAY STD. 701451 UNLESS NOTED OTHERWISE.

FILE NAME =	USER NAME = cushmanbw	DESIGNED -	REVISED -	STATE OF ILLINOIS DEPARTMENT OF TRANSPORTATION	STAGE I (IOWA)				F.A.I. RTE.	SECTION	COUNTY	TOTAL SHEETS	SHEET NO.		
c:\pwwork\pwwork\cushmanbw\d0149166\d0149166\stg-A.dgn		DRAWN -	REVISED -		SCALE:	SHEET NO.	OF	SHEETS	STA.	TO STA.	80	(81-1B) M-4	ROCK ISLAND	75	12
		CHECKED -	REVISED -		CONTRACT NO. 64F31										
		DATE -	REVISED -		ILLINOIS FED. AID PROJECT										