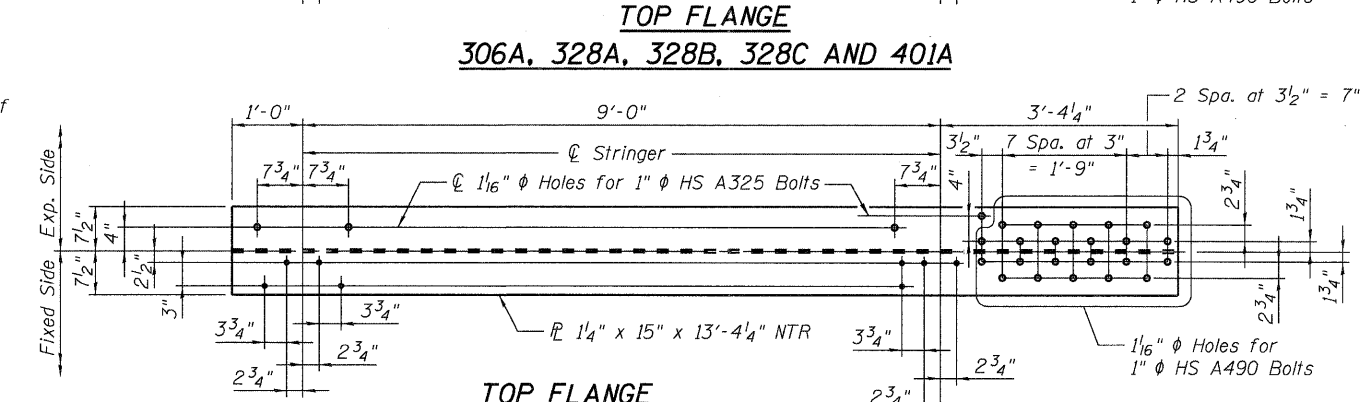
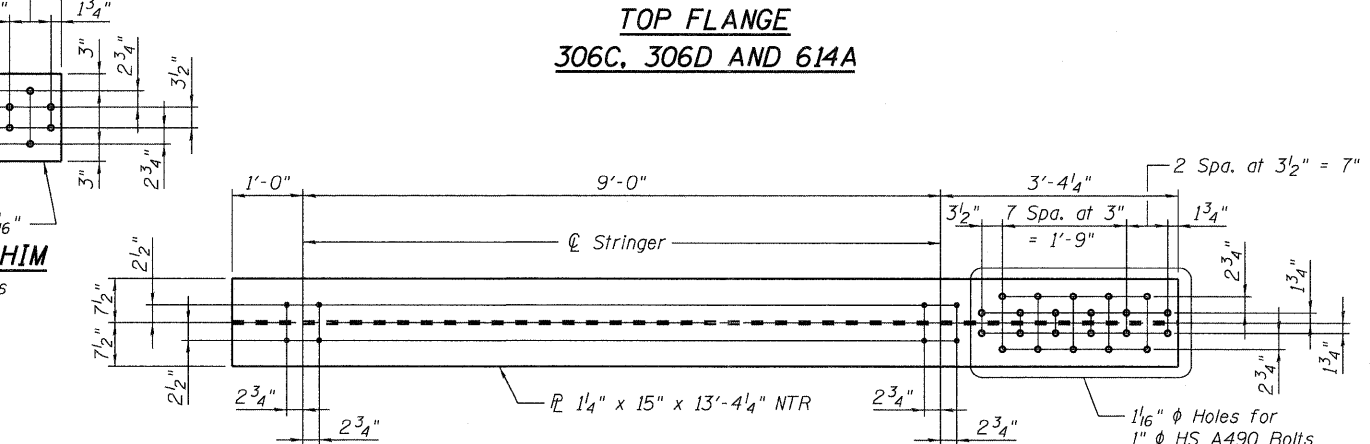
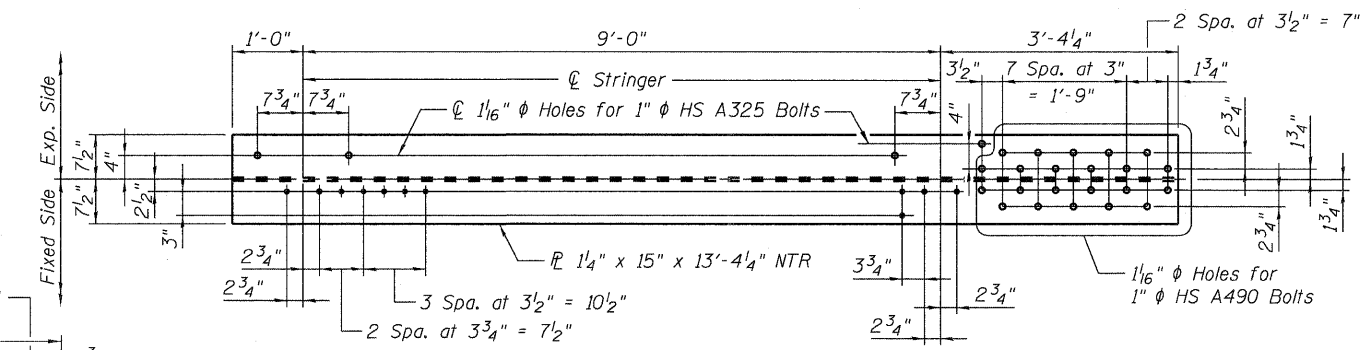
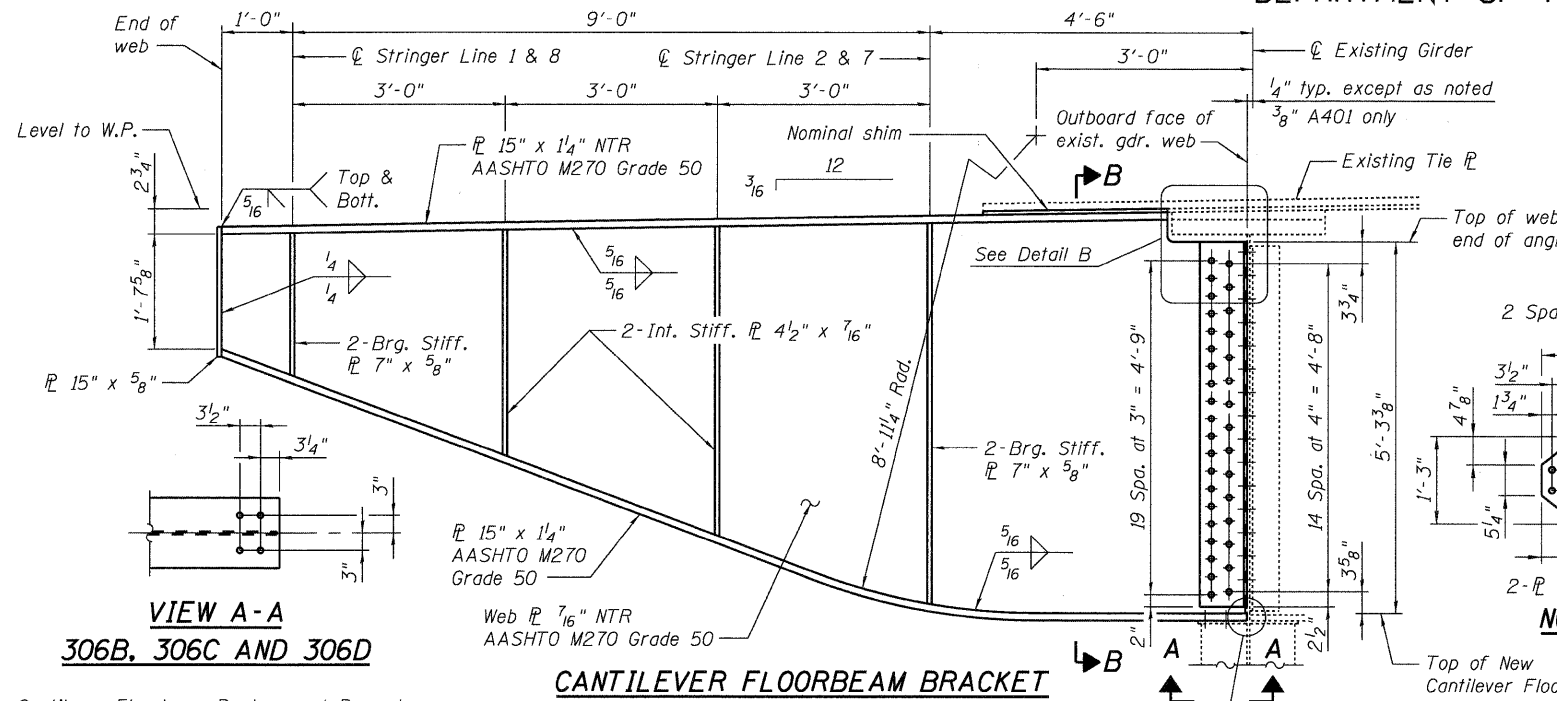


STATE OF ILLINOIS
DEPARTMENT OF TRANSPORTATION

Note:
Load carrying components designated "NTR" shall conform to the supplemental requirement for Notch Toughness, Zone 2 for Fractural Critical Members.



Cantilever Floorbeam Replacement Procedure

- 1) Remove existing girder web fasteners of the first connection angle one at a time, ream existing hole in girder and inboard connection angle to 1 1/16" diameter, and install a new 1" diameter H.S. A490 bolt with the threaded length on the outboard side of the girder and with the nut finger tight.
- 2) Remove existing cantilever floorbeam by removing fasteners in the outstanding leg of the web connection angles and the top and bottom flanges. The existing tie plate may remain connected to the interior floorbeam.
- 3) Remove finger tightened nuts on new 1" diameter H.S. A490 bolts and remove existing connection angle while ensuring that the shank of the new bolts remains in place.
- 4) Clean and paint existing steel in area behind and adjacent to the new connection angle. Protect the threaded ends of the new bolts to prevent damage and or painting of the bolt threads.
- 5) Install new connection angle and fully tighten nuts for girder web connection.
- 6) Repeat Steps 1, 3 and 4 for the second connection angle.
- 7) Install new cantilever floorbeam and finger tighten nuts for top and bottom flange connections. Maintain support of the new cantilever floorbeam until the entire connection has been completed.
- 8) Install second new connection angle and finger tighten nuts for girder web connection.
- 9) Install bolts in cantilever floorbeam web connection with finger tightened nuts.
- 10) Ensure mill to bear condition for cantilever floorbeam bottom flange to girder web, then fully tighten all newly installed bolts.

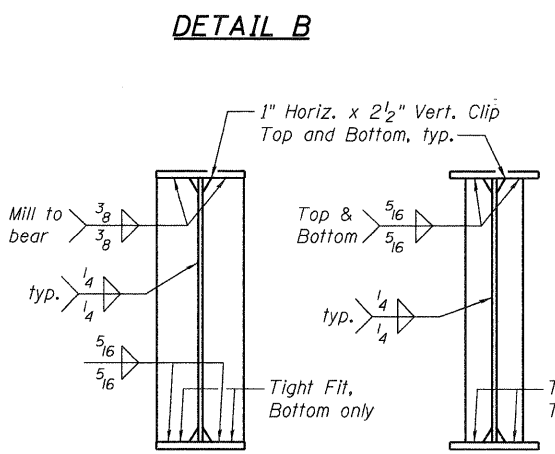
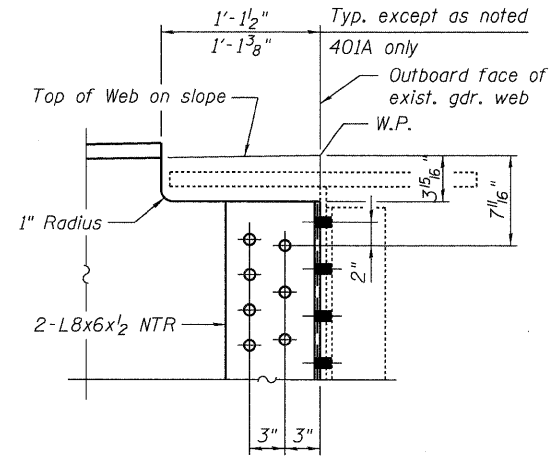
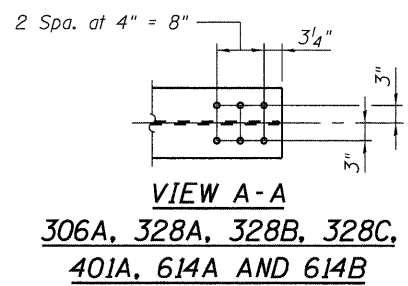


TABLE OF FLOORBEAMS

MARK NO.	SPAN	FLRBM NO.	QUANTITY**
306A	20	FB1	2
		FB5	2
		FB2	2
		FB3	2
		FB5	2
306B	17	FB1	2
		FB2	2
		FB3	2
		FB5	2
		FB6	2
		FB6	2
306C	19	FB4	2
		FB3	2
306D	22	FB3	2
328A	9	FBO	2
328B	19	FB7	2
328C	24	FB6	2
401A	12	FB6	2
		FB2	2
614A	22	FB6	2
614B	21	FB6	2

**Includes one on Eastbound and one on Westbound side of bridge.
For FLRBM NO., see Sheet Nos. 6 and 7 of 33.

Notes:
1 1/16" ϕ Holes for 7/8" ϕ HS A325 Bolts unless otherwise noted.
Structural steel shall be AASHTO M270 Grade 36, except as noted.
Reference to cantilever floorbeam mark numbers are from 1965 original shop drawings.
All cantilever floorbeams shall be set normal to profile grade, except for vertical floorbeam at Pier 8 and Pier 24.
For cantilever floorbeam moment and shear tables, see Sheet No. 3 of 33.
Cost of removal of existing cantilever floorbeams shall be included in Structural Steel Removal.
Cost of new cantilever floorbeam shall be included in Furnishing and Erecting Structural Steel.

**CANTILEVER FLOORBEAM REPLACEMENT
SINGLE GIRDER SPANS
I-80 OVER
MISSISSIPPI RIVER
STRUCTURE NO. 081-0011**

DESIGNED YSS
CHECKED ACK
DRAWN PRC
CHECKED YSS
09/17/09



SHEET NO. 8 33 SHEETS	F.A.I. RTE. 80	SECTION (81-1B)M-4	COUNTY ROCK ISLAND	TOTAL SHEETS 75	SHEET NO. 35
	SN 081-0011		CONTRACT NO. 64F31		
FED. ROAD DIST. NO. 7 ILLINOIS FED. AID PROJECT					