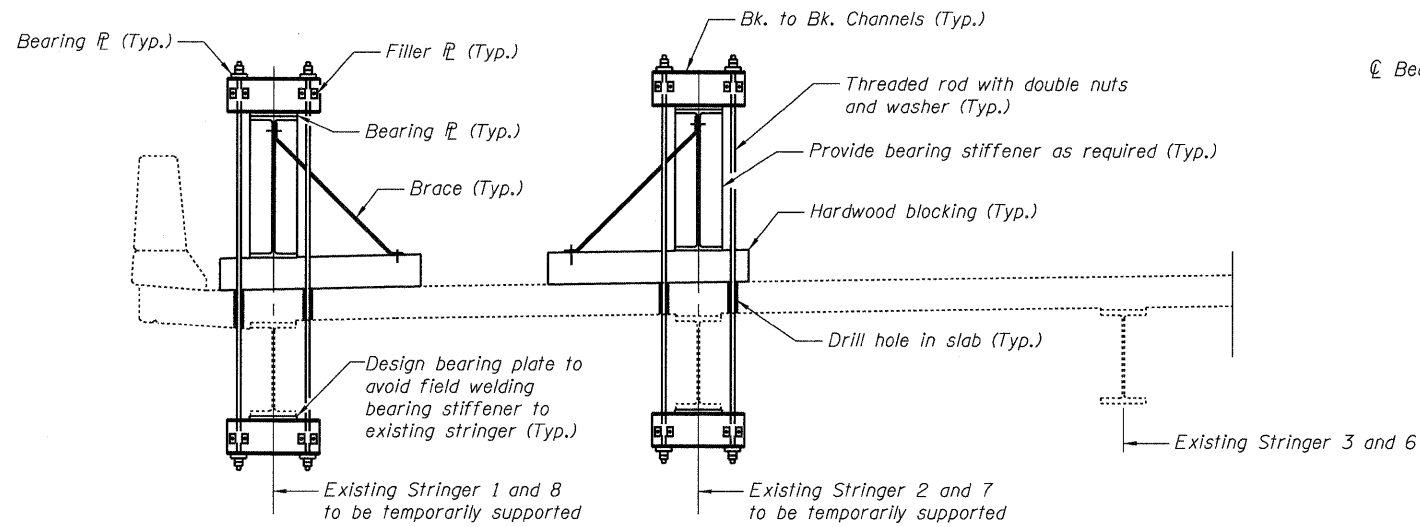
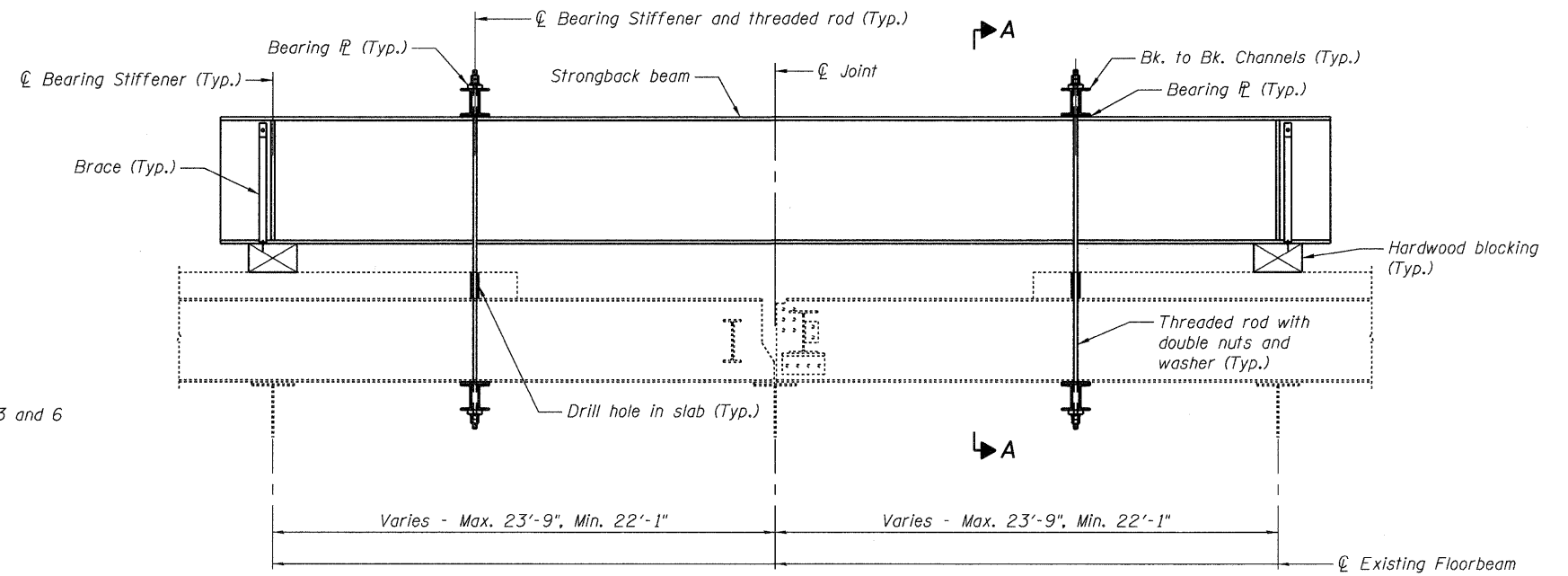


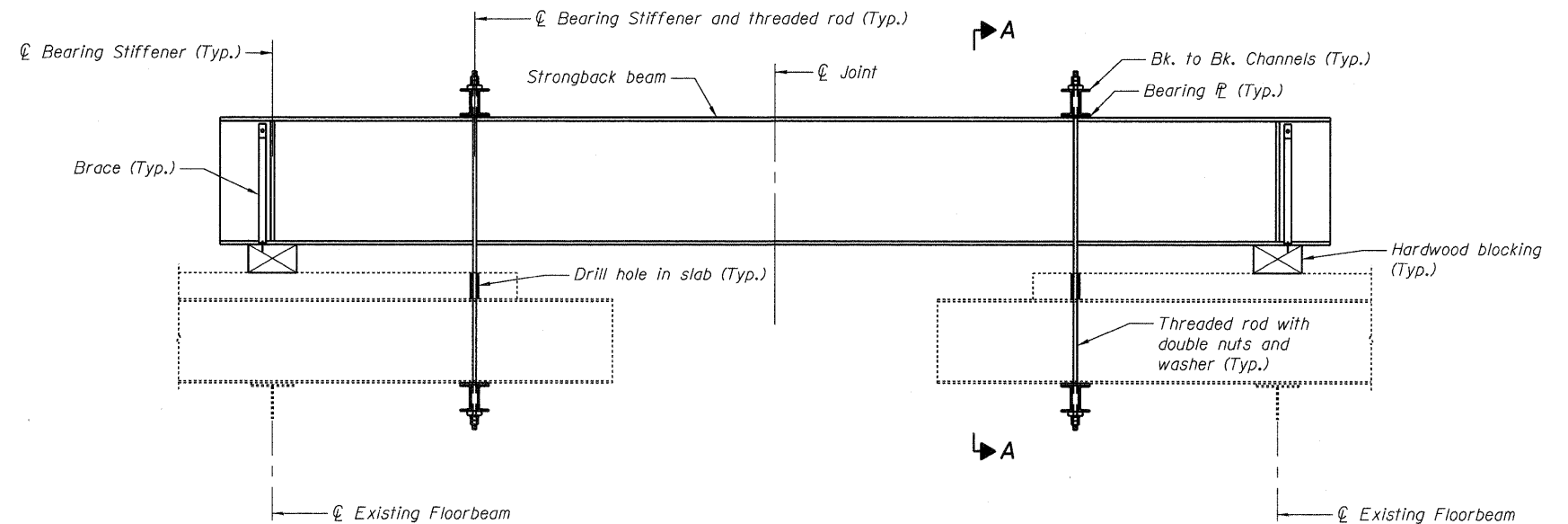
STATE OF ILLINOIS
DEPARTMENT OF TRANSPORTATION



SECTION A-A



SUGGESTED SLAB/STRINGER TEMPORARY SUPPORT - STRINGER LINES 1, 2, 7 AND 8
TYPICAL ELEVATION



SUGGESTED SLAB/STRINGER TEMPORARY SUPPORT - STRINGER LINES 1, 2, 7 AND 8
REMOVAL ELEVATION

(Partial slab, stringer ends and cantilever floorbeam removed)

SLAB/STRINGER TEMPORARY
SUPPORT CONCEPTUAL DETAILS
I-80 OVER
MISSISSIPPI RIVER
STRUCTURE NO. 081-0011

Notes:
The Contractor shall submit design of the Temporary Support System for approval by the Engineer prior to commencing any work as specified in the Special Provision "Structural Assessment Reports for Contractor's Means and Methods" and "Temporary Support System".
Dead load = 17k at each stringer end (service load).
Cost of Slab/Stringer Support System shall be included in Temporary Support System.

DESIGNED	YSS
CHECKED	DWP
DRAWN	PRC
CHECKED	YSS

09/17/09



SHEET NO. 10 33 SHEETS	F.A.I. RTE.	SECTION	COUNTY	TOTAL SHEETS	SHEET NO.
	80	(81-1B)M-4	ROCK ISLAND	75	37
	SN 081-0011		CONTRACT NO. 64F31		
FED. ROAD DIST. NO. 7 ILLINOIS FED. AID PROJECT					