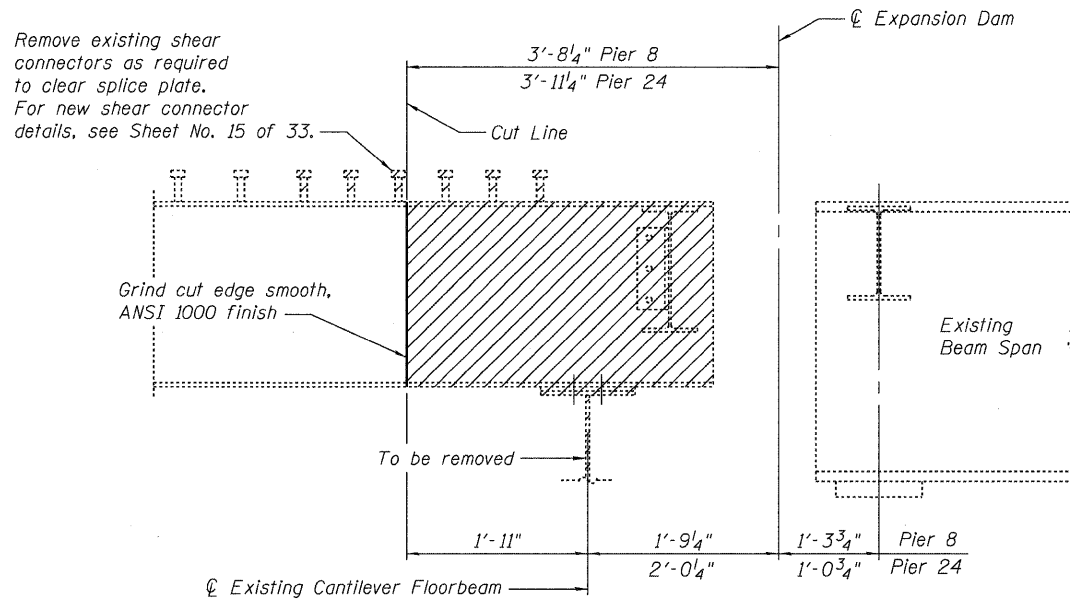
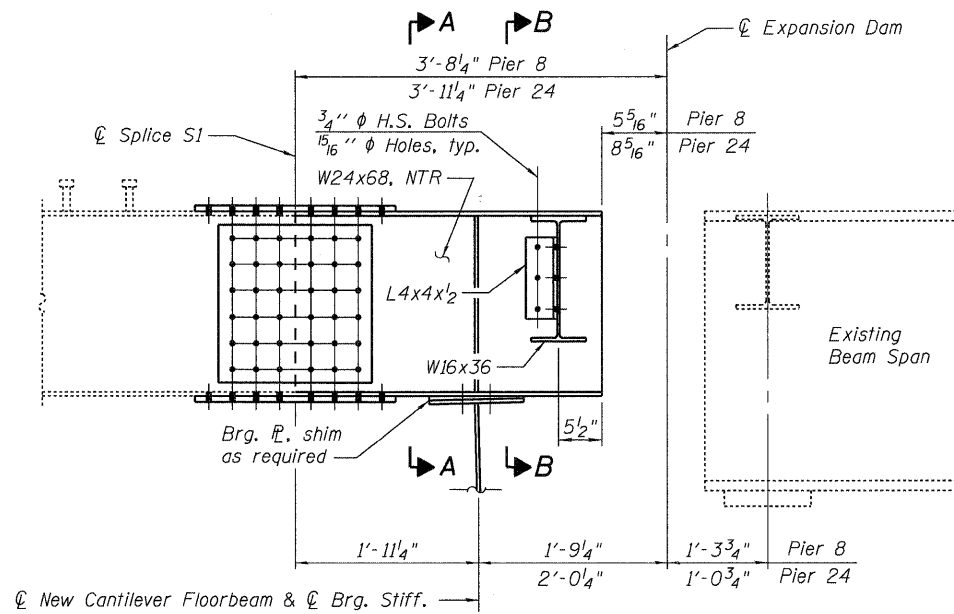


STATE OF ILLINOIS
DEPARTMENT OF TRANSPORTATION

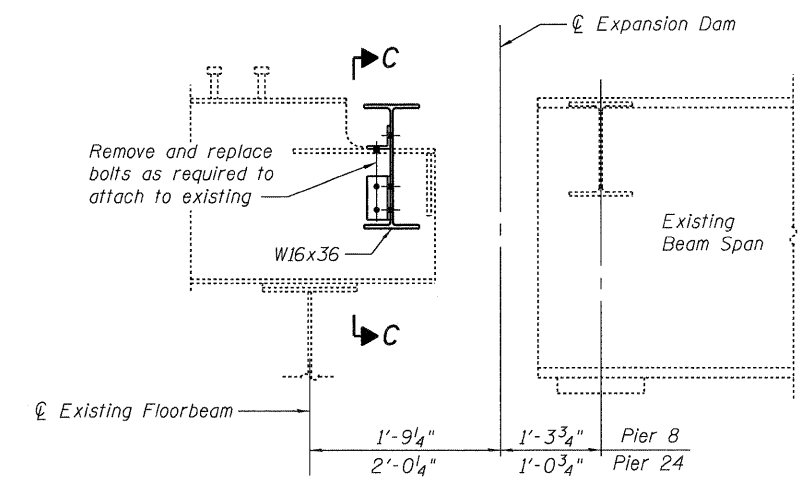
Note: Expansion Dams not shown for clarity.



**STRINGER END REPAIR AT EXPANSION DAM
PIER 8 AND 24 - STRINGER LINES 1 AND 8
TYPICAL REMOVAL ELEVATION**



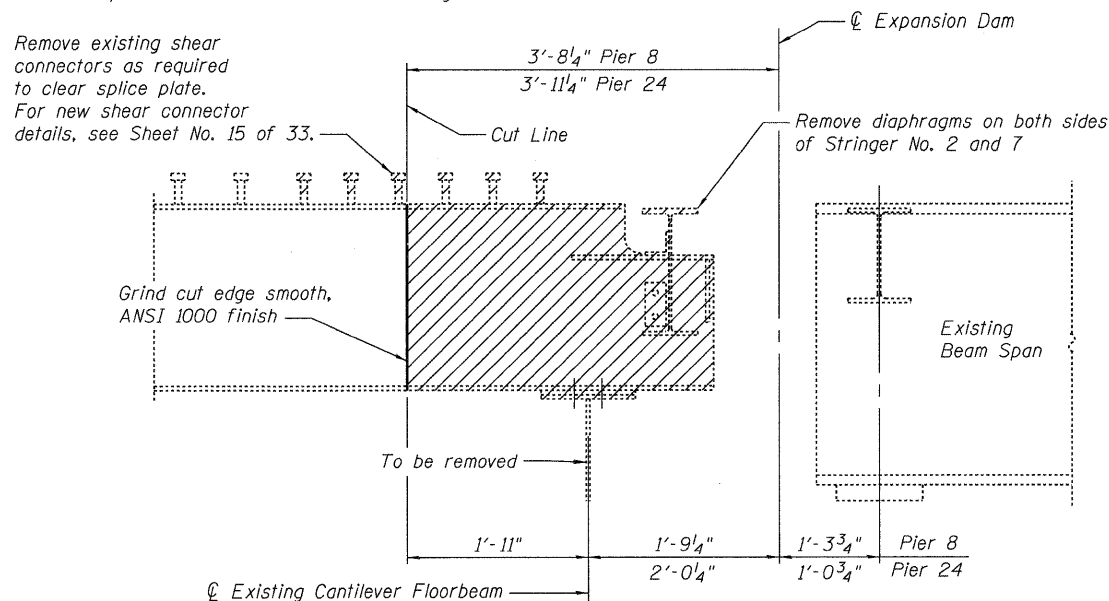
**STRINGER END REPAIR AT EXPANSION DAM
PIER 8 AND 24 - STRINGER LINES 1, 2, 7 AND 8
TYPICAL ELEVATION**



**DIAPHRAGM CONNECTION AT EXPANSION DAM
PIER 8 AND 24 - STRINGER LINES 3 AND 6**

Note:

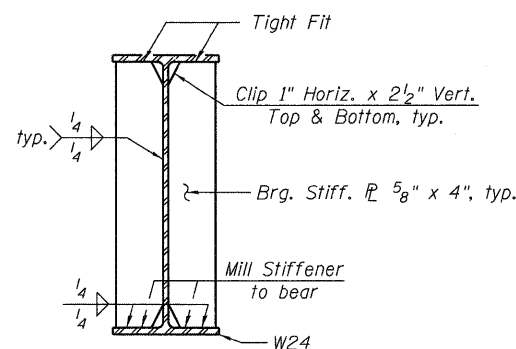
Remaining exposed shear connectors damaged as a result of construction shall be replaced, at the contractor's expense to the satisfaction of the engineer.



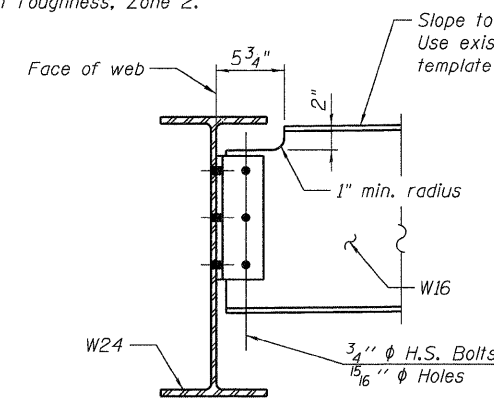
**STRINGER END REPAIR AT EXPANSION DAM
PIER 8 AND 24 - STRINGER LINES 2 AND 7
TYPICAL REMOVAL ELEVATION**

Note:

Load carrying components designated "NTR" shall conform to the supplemental requirement for Notch Toughness, Zone 2.

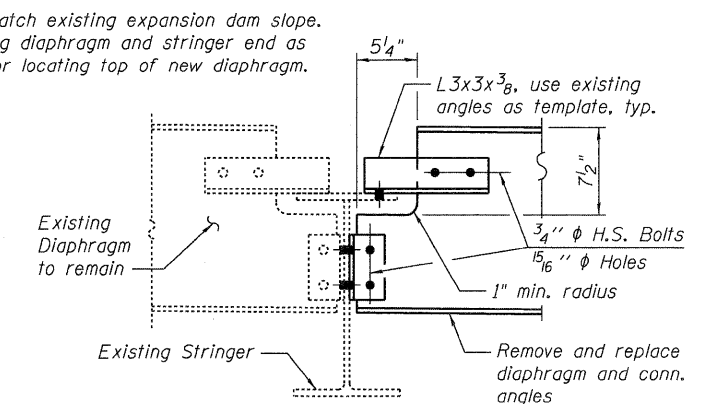


SECTION A-A



SECTION B-B

Stringer No. 1 & 8 shown,
Stringer No. 2 & 7 similar

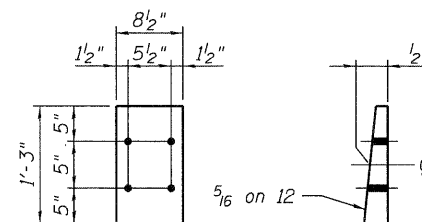


SECTION C-C

BILL OF MATERIAL

Item	Unit	Total*
Structural Steel Repair	Pound	209,500

* For all stringer end repairs.



BEARING P

Notes:

For General Notes, see Sheet No. 3 of 33.
For Splice details, see Sheet No. 14 of 33.
For deck removal, see Sheet No. 23 of 33.
For Expansion Dam details, see Sheet No. 29 of 33.
Two 1/8" adjusting shims shall be provided for each bearing in addition to all other plates or shims and placed as shown on bearing details.

STRINGER END REPAIR DETAILS - 1

**I-80 OVER
MISSISSIPPI RIVER
STRUCTURE NO. 081-0011**

DESIGNED	YSS
CHECKED	ACK
DRAWN	PRC
CHECKED	YSS



09/17/09

SHEET NO. 11 33 SHEETS	F.A.I. RTE. 80	SECTION (81-1B)M-4	COUNTY ROCK ISLAND	TOTAL SHEETS 75	SHEET NO. 38
	SN 081-0011		CONTRACT NO. 64F31		
FED. ROAD DIST. NO. 7 ILLINOIS FED. AID PROJECT					