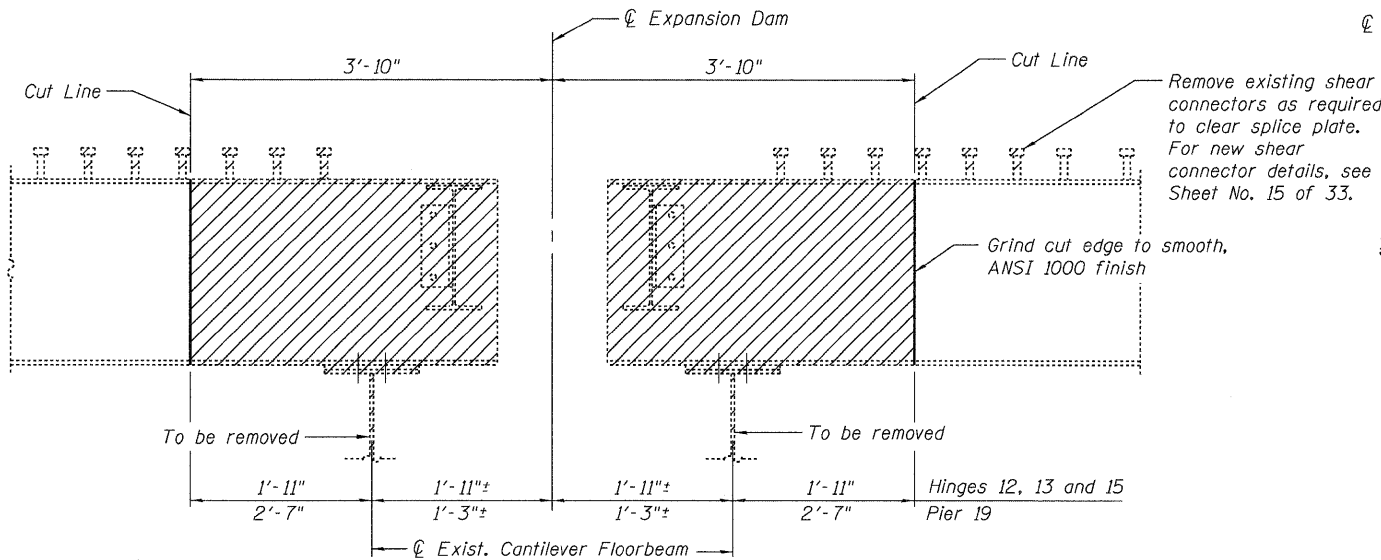


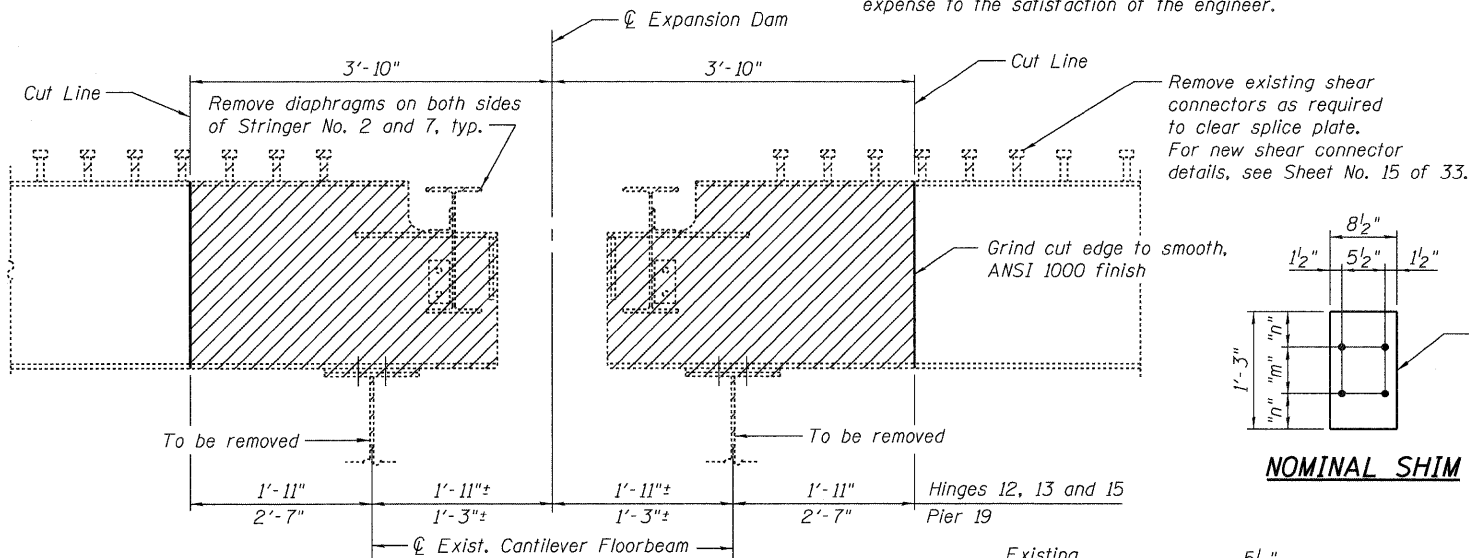
STATE OF ILLINOIS
DEPARTMENT OF TRANSPORTATION

Note: Expansion Dams not shown for clarity.



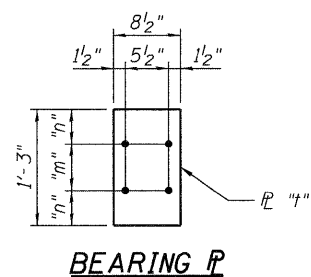
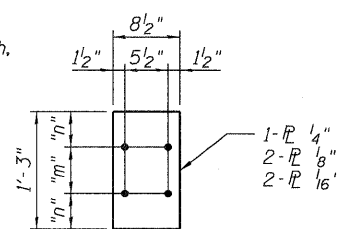
**STRINGER END REPAIR AT EXPANSION DAM
HINGES 12, 13, 15 AND AT PIER 19
STRINGER LINES 1 AND 8 - TYPICAL REMOVAL ELEVATION**

Note:
Remaining exposed shear connectors damaged as a result of construction shall be replaced, at the contractor's expense to the satisfaction of the engineer.

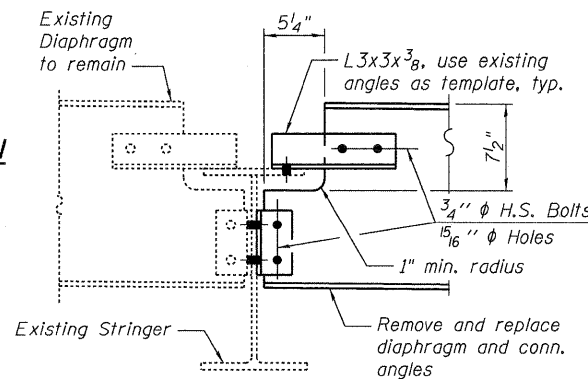


**STRINGER END REPAIR AT EXPANSION DAM
HINGES 12, 13, 15 AND AT PIER 19
STRINGER LINES 2 AND 7 - TYPICAL REMOVAL ELEVATION**

NOMINAL SHIM

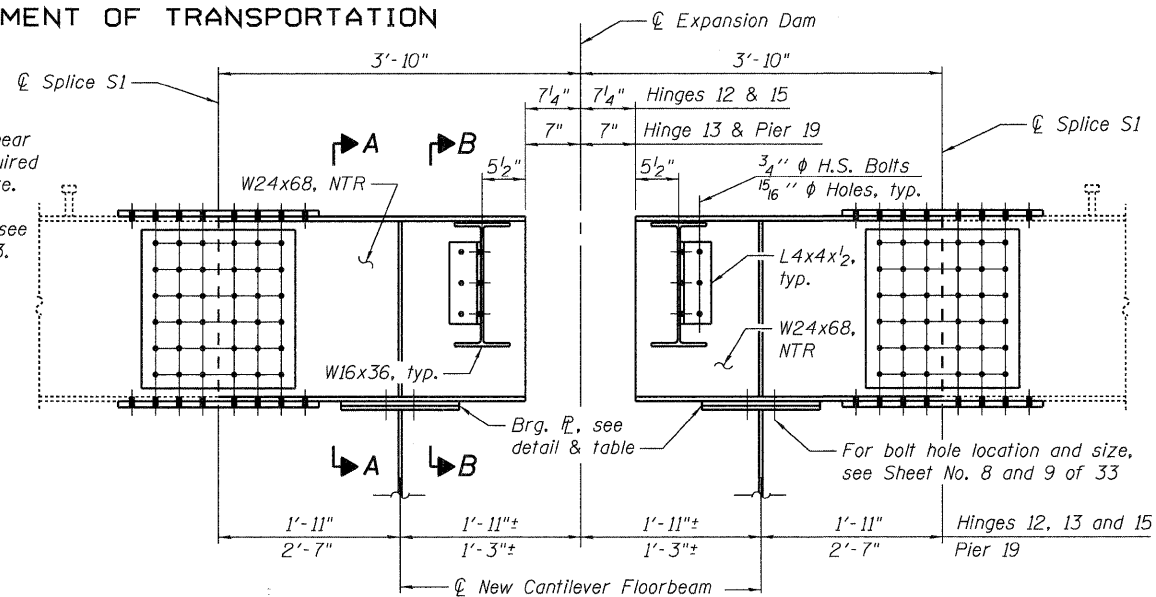


BEARING PLATE



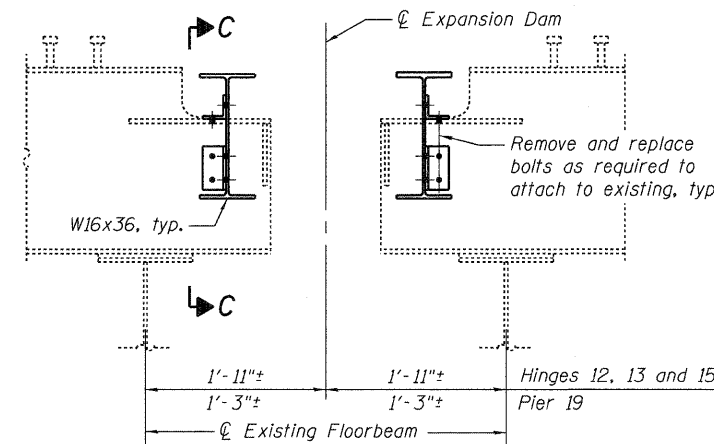
SECTION C-C

Note:
See Sheet No. 20 of 33 for structural steel repair F for additional repair at Pier 19.



**STRINGER END REPAIR AT EXPANSION DAM
HINGES 12, 13, 15 AND AT PIER 19
STRINGER LINES 1, 2, 7 AND 8 - TYPICAL ELEVATION**

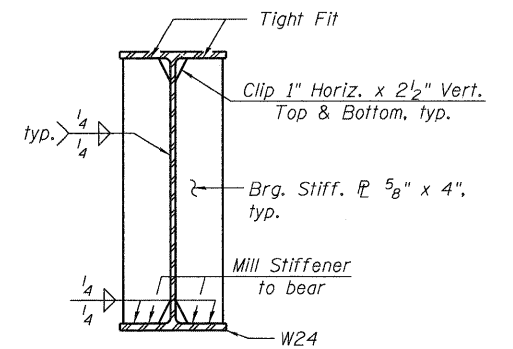
Note:
Load carrying components designated "NTR" shall conform to the supplemental requirement for Notch Toughness, Zone 2.



**DIAPHRAGM CONNECTION AT EXPANSION DAM
HINGES 12, 13, 15 AND AT PIER 19
STRINGER LINES 3 AND 6**

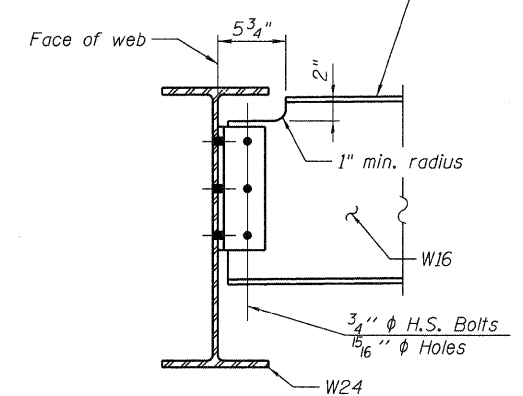
TABLE OF BEARING PLATES

LOCATION	GDR. SPAN	STRINGER NO.	"m"	"n"	"t"	NOMINAL SHIM
Hinge 12 & 15	Single	1 & 8	5"	5"	---	Req'd.
	Single	2 & 7	5"	5"	1/2"	---
	Double	1 & 8	5"	5"	1 1/4"	Req'd.
Hinge 13	Double	2 & 7	3 1/2"	5 3/4"	1/4"	---
	Double	1 & 8	5"	5"	1 1/4"	Req'd.
Pier 19	Single	1 & 8	5"	5"	1/2"	---
	Single	2 & 7	5"	5"	1/2"	---



SECTION A-A

Slope to match existing expansion dam slope. Use existing diaphragm and stringer end as template for locating top of new diaphragm.



SECTION B-B

Stringer No. 1 & 8 shown, Stringer No. 2 & 7 similar

Notes:
For General Notes, see Sheet No. 3 of 33.
For Bill of Material, see Sheet No. 11 of 33.
For Splice details, see Sheet No. 14 of 33.
For deck removal, see Sheet No. 22 of 33.
For Expansion Dam details, see Sheet No. 29 of 33.
Two 1/8" adjusting shims shall be provided for each bearing in addition to all other plates or shims and placed as shown on bearing details.

**STRINGER END REPAIR DETAILS - 2
I-80 OVER
MISSISSIPPI RIVER
STRUCTURE NO. 081-0011**

DESIGNED	YSS
CHECKED	ACK
DRAWN	PRC
CHECKED	YSS



09/17/09

SHEET NO. 12 33 SHEETS	F.A.I. RTE.	SECTION	COUNTY	TOTAL SHEETS	SHEET NO.
	80	(81-1B)M-4	ROCK ISLAND	75	39
SN 081-0011			CONTRACT NO. 64F31		
FED. ROAD DIST. NO. 7 ILLINOIS FED. AID PROJECT					