

STATE OF ILLINOIS  
DEPARTMENT OF TRANSPORTATION

Note:  
Remaining exposed shear connectors damaged as a result of construction shall be replaced, at the contractor's expense to the satisfaction of the engineer, typ.

\*\* For location with Lateral Conn.  $\bar{r}$ , see table

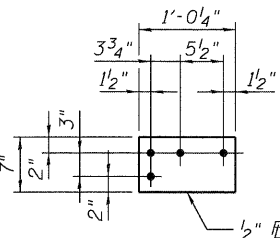
Remove existing shear connectors as required to clear splice plate. For new shear connector details, see Sheet No. 15 of 33.

Remove existing shear connectors as required to clear splice plate. For new shear connector details, see Sheet No. 15 of 33.

Grind cut edge to smooth, ANSI 1000 finish

Grind cut edge to smooth, ANSI 1000 finish

Note:  
Disconnect existing access walk at Pier 13 and Pier 14, temporarily support access walk.

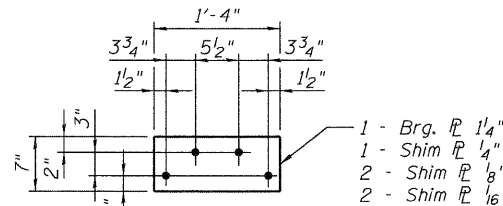


**FIXED BEARING  $\bar{r}$**

At Relief Joints of Single Girder Spans  
Stringer Lines 2 & 7 only

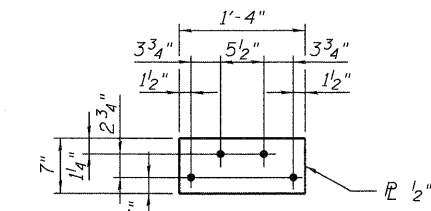
**FIXED BEARING  $\bar{r}$**

At Relief Joints of Single Girder Spans  
Stringer Lines 1 & 8 only



**FIXED BEARING  $\bar{r}$   
AND NOMINAL SHIM**

At Relief Joints of Double Girder Spans  
Stringer Lines 1 & 8 only



**FIXED BEARING  $\bar{r}$**

At Relief Joints of Double Girder Spans  
Stringer Lines 2 & 7 only

Note:  
Load carrying components designated "NTR" shall conform to the supplemental requirement for Notch Toughness, Zone 2.

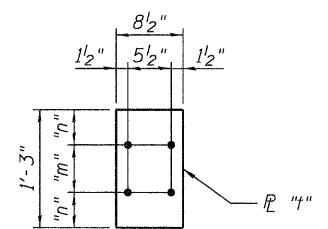
**STRINGER END REPAIR AT RELIEF JOINT  
STRINGER LINES 1, 2, 7 AND 8  
TYPICAL REMOVAL ELEVATION**

**STRINGER END REPAIR AT HINGE 14  
STRINGER LINES 1, 2, 7 AND 8  
TYPICAL REMOVAL ELEVATION**

**NOMINAL SHIM  
AT HINGE 14**

**STRINGER END REPAIR AT RELIEF JOINT  
STRINGER LINES 1, 2, 7 AND 8  
TYPICAL ELEVATION**

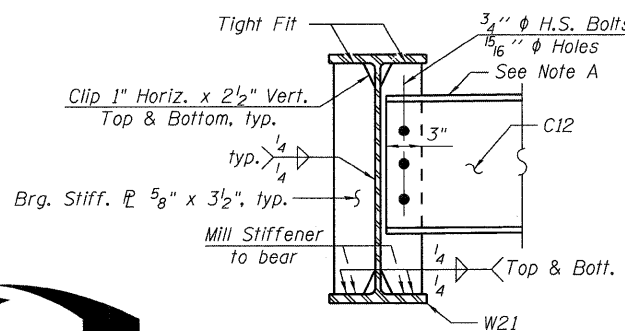
**STRINGER END REPAIR AT HINGE 14  
STRINGER LINES 1, 2, 7 AND 8  
TYPICAL ELEVATION**



**BEARING  $\bar{r}$   
AT HINGE 14**

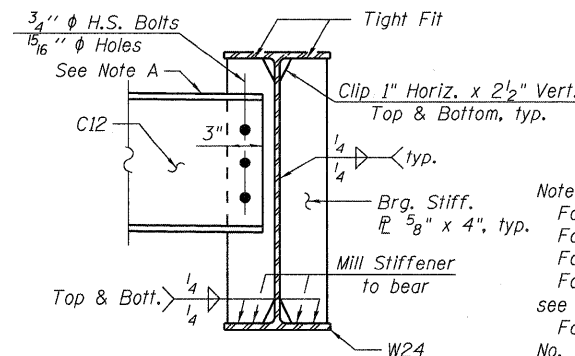
**TABLE OF  
LATERAL CONN.  $\bar{r}$  LOCATIONS  
AT RELIEF JOINTS**

SPAN	FLRBM NO.	STRINGER NO.
9	FB4	1 & 8
19	FB3	1 & 8
22	FB3	1 & 8
22	FB6	1 & 8



**SECTION A-A**

Stringer No. 1 & 8 shown,  
Stringer No. 2 & 7 similar



**SECTION B-B**

Stringer No. 1 & 8 shown,  
Stringer No. 2 & 7 similar

Note: A:  
Slope to match existing floorbeam slope

Notes:  
For General Notes, see Sheet No. 3 of 33.  
For Bill of Material, see Sheet No. 11 of 33.  
For Splice details, see Sheet No. 14 of 33.  
For diaphragm connection at stringer No. 3 and 6, see Sheet No. 14 of 33.  
For Elastomeric Bearing Assembly details, see Sheet No. 16 of 33.  
For deck removal, see Sheet No. 24 thru 26 of 33.  
Two 1/8" adjusting shims shall be provided for each bearing in addition to all other plates or shims and placed as shown on bearing details.

**TABLE OF BEARING  $\bar{r}$ 's AT HINGE 14**

LOCATION	STRINGER NO.	"m"	"n"	"t"	NOMINAL SHIM
Hinge 14	1 & 8	5"	5"	1 1/4"	Req'd.
	2 & 7	3 1/2"	5 3/4"	1/4"	---

**STRINGER END REPAIR DETAILS - 3  
I-80 OVER  
MISSISSIPPI RIVER  
STRUCTURE NO. 081-0011**

DESIGNED	YSS
CHECKED	ACK
DRAWN	PRC
CHECKED	YSS



09/17/09

SHEET NO. 13 33 SHEETS	F.A.I. RTE.	SECTION	COUNTY	TOTAL SHEETS	SHEET NO.
	80	(81-1BM-4)	ROCK ISLAND	75	40
SN 081-0011			CONTRACT NO. 64F31		
FED. ROAD DIST. NO. 7 ILLINOIS FED. AID PROJECT					